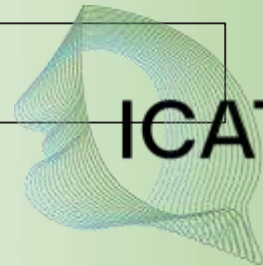


EU Green Week PARTNER EVENT

A citizen perspective from Spain on the need for
integrating climate, water and health

Ms. Elena Lopez Gunn

Royal Elcano Institute and iCatalist



ICATALIST

Lisbon, Portugal
4 June 2024

#WaterWiseEU



A citizen perspective from Spain on the need for integrating climate, water and health

Elena Lopez Gunn (RIE, Icatalist and Empower Insight)

With the collaboration of:

Lara Lazaro Touza (RIE)

Sofia Tirado (RIE)

Andrea Briones (RIE)

Marianne Wehbe (Icatalist)

Daniela Quiros (Empower Insight)



Index

1. Water, health and climate change- a clear nexus for action and citizen support

- European initiatives
- Spanish initiatives

2. Three examples:

- EU Mission on adaptation Manual on citizen engagement
- Results on a national survey (Elcano)- Spain
- Capacity building on climate data and health (Icatalist and Empower Insight for CAN)-



Index

1. Water, health and climate change- a clear nexus for action and citizen support

- European initiatives
- Spanish initiatives





**EUROPEAN
CLIMATE AND HEALTH
OBSERVATORY**



**Climate
ADAPT**

SHARING ADAPTATION
KNOWLEDGE FOR
A CLIMATE-RESILIENT
EUROPE



[About](#)

[Policy context](#)

[Evidence on climate change and health](#)

[Publications and outreach](#)

European Climate and Health Observatory

We provide easy access to a wide range of relevant tools, data, publications and other resources related to climate change and health

DISCOVER THE MAIN TOPICS AND TOOLS OF THE OBSERVATORY



[Case studies](#)



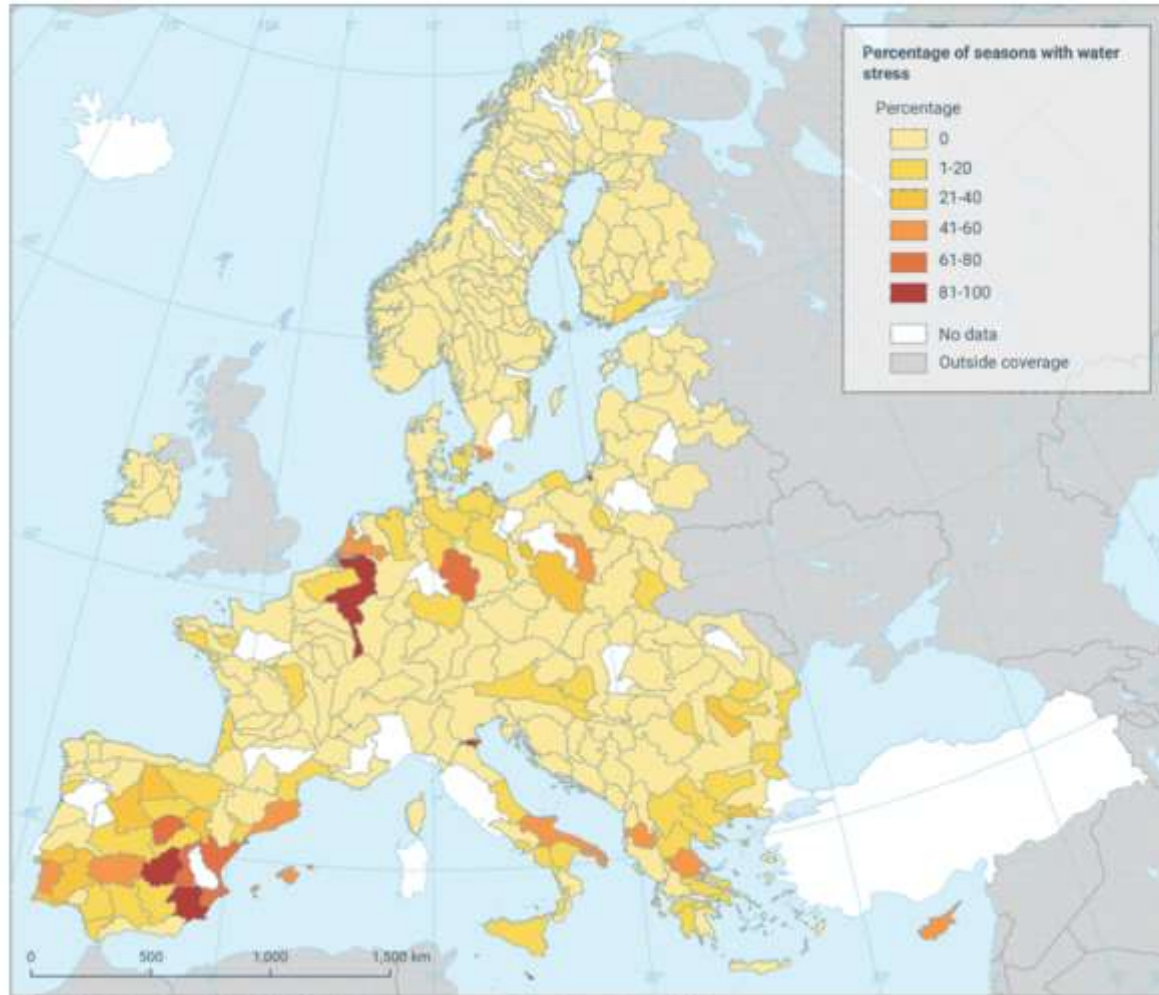
[Indicators](#)



[Country profiles](#)



[Resource catalogue](#)



Reference data: © EuroGeographics, © FAO (UN), © TurkStat Source: European Commission - Eurostat/GISCO

EEA report on climate, water and health

Discover the health risks of floods, droughts and worsened water quality, and the responses to prevent and reduce the impacts in the EEA report.

Find new and updated resources on the Observatory portal, including case studies and evidence pages related to various water-related health risks and responses, complement the report.

[To the report](#)





GOBIERNO DE ESPAÑA

MINISTERIO DE SANIDAD, SERVICIOS SOCIALES E IGUALDAD

MINISTERIO DE AGRICULTURA, ALIMENTACIÓN Y MEDIO AMBIENTE



INICIO

EL OBSERVATORIO

CAMBIO CLIMÁTICO Y SALUD

INDICADORES

GRUPOS DE TRABAJO

NOTICIAS

AGENDA

CONVOCATORIAS

DIVULGACIÓN

DOCUMENTOS

ENLACES DE INTERÉS



La contaminación atmosférica y el cambio climático afectan cada vez más a la salud de los niños

[Anterior](#) - [Siguinte](#)



Contacto



Entorno privado de trabajo

Noticias y Novedades

▶ [16/06/2022](#)

La contaminación atmosférica y el cambio climático afectan cada vez más a la salud de los niños

▶ [03/06/2022](#)

Por qué la salud mental debe ser una prioridad al adoptar medidas relacionadas con el cambio climático

▶ [28/02/2022](#)

Sexto informe de evaluación del IPCC: Cambio Climático 2022

▶ [08/07/2021](#)

El cambio climático aumentará la mortalidad atribuible a las temperaturas en Europa si no se



Annual outbreaks due to water-borne diseases and coinciding with the occurrence of droughts and floods (extreme weather events)

Indicadores de Salud y Cambio Climático

ÍNDICE

1. INTRODUCCIÓN
2. OBJETIVOS
3. METODOLOGÍA
4. NOTAS METODOLÓGICAS Y LIMITACIONES
5. INDICADORES
 - a) INDICADORES BÁSICOS
 - b) INDICADORES COMPLEMENTARIOS
 - c) FICHAS INDIVIDUALIZADAS

INDICADORES BÁSICOS	
Ingresos hospitalarios por efectos de calor.	
Tasa de Mortalidad por exposición a calor natural excesivo	
Exceso de mortalidad general observada sobre la esperada.	
Tasa de Mortalidad por exposición al frío natural excesivo	
Municipios en los que se detecta presencia o establecimiento del n	
Episodios por superación de microcistinas y/o cianobacterias en ag	
Concentración atmosférica de polen potencialmente alérgico.	
Concentración atmosférica de esporas de hongos alérgicas.	
INDICADORES COMPLEMENTARIOS	
Casos autóctonos de Paludismo	
Casos autóctonos de Virus del Nilo Occidental	31
Focos de Fiebre del Nilo Occidental (West Nile) en équidos.	33
Casos por Enfermedad de Lyme	35
Casos de Fiebre Exantemática Mediterránea	36
Casos autóctonos de Dengue	37
Casos autóctonos de Enfermedad por Virus Chikungunya.	39
Brotos anuales por enfermedades de transmisión hídrica y coincidentes con la ocurrencia de sequías e inundaciones (eventos climáticos extremos)	41
Ingresos hospitalarios de tipo urgente por asma de naturaleza alérgica	43
Ingresos hospitalarios de tipo urgente por Enfermedad Pulmonar Obstructiva Crónica (EPOC)	45
% de variación en la tasa de mortalidad por causas respiratorias	47
% de variación en la tasa de mortalidad por causas cardiovasculares	48

Nombre del Indicador	Brotos anuales por enfermedades de transmisión hídrica y coincidentes con la ocurrencia de sequías e inundaciones (eventos climáticos extremos)
	- Martín A, Varela MC, Torres A, et-al. Vigilancia epidemiológica de brotes de transmisión hídrica en España. 1999-2006. Bol Epidemiol. 2008; 16:25-36.
	- Martínez-Urtaza J, Lozano-León A, Varela-Peti, et al. Environmental determinants of the occurrence distribution on <i>Vibrio parahaemolyticus</i> in the Rias of Galicia. Spain Appl Environ Microbiol. 2008; 74: 265-74.
	- McLaughlin JC, DePaola A, Bopp CA, et-al. Outbreak of <i>Vibrio parahaemolyticus</i> gastroenteritis associated with Alaskan oysters. N Engl J Med. 2005; 353:1463-70.
	- Reacher M, McKenzie K, Lane C, Nichols T, Kedge I, Iverson A, Hepple P, Walter T, Laxton C and Simpson J. Health impacts of flooding in Lewes: a comparison of reported gastrointestinal and other illness and mental health in flooded and non flooded households. Communicable Disease and Public Health. 2004; 7: 1-8.
	- Tirado MC. Cambio climático y salud. Informe SESPAS 2010. Gac Sanit. 2010; 24 (1):78-84.
	- Wade TJ, Sandhu SK, Levy D, Lee S, LeChevallier MW, Katz L and Colford JM. Did a severe flood in the Midwest cause an increase in the incidence of gastrointestinal symptoms? Am. J. Epidemiol. 2004; 159: 398-405.
	- WHO-UNICEF. Global Water Supply and Sanitation Assessment 2000 Report. http://www.who.int/water_sanitation_health/monitoring/globalassess/en/ .
	- Whitehead PG, Wade AJ and Butterfield D. Potential impacts of climate change on water quality and ecology in six UK rivers Hydrology Research. 2009; 40(2-3): 113-122.



Index

2. Three examples:

- EU Mission on adaptation- Manual for citizen and stakeholder engagement (MIP4Adapt)- EU
- Results on a national survey (Elcano)- Spain
- Capacity building on climate data and health (Icatalist and Empower Insight for CAN)- Africa



Example 1- EU Mission on adaptation- technical assistance to regions and local authorities on how on how to engage citizens and stakeholders



The increased impacts from extreme events

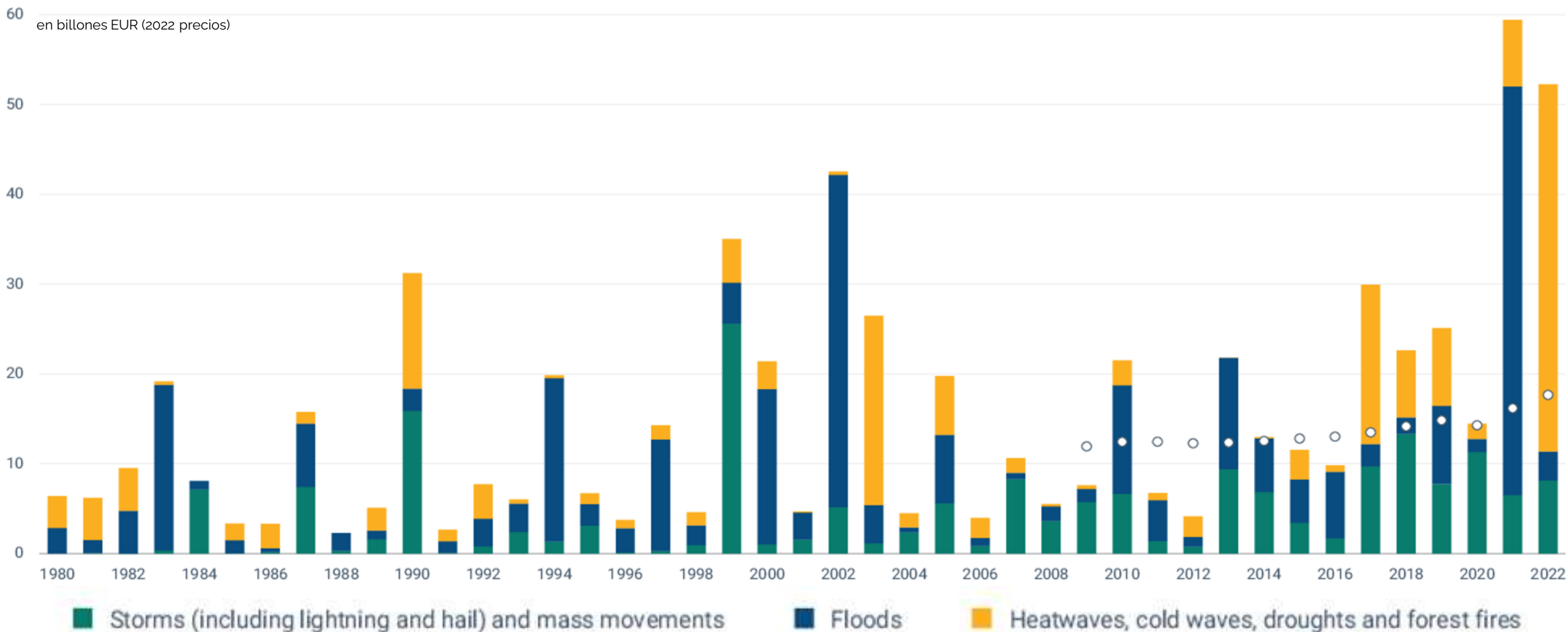
1980-2022:

EUR 650 billion in economic losses

➤ en 2021: EUR 60 billion (EUR 40 floods Belgium and Germany)

➤ en 2022: EUR 54 billion (fires, droughts and heat waves)

source: EEA 2023





EUROPEAN UNION



EU MISSIONS

ADAPTATION TO CLIMATE CHANGE



#EUmissions #HorizonEU #MissionClimate



DiY manual for Stakeholder and Citizen engagement

Appendix – description of key tools

02 COMMUNICATING CLIMATE CHANGE

As many years of climate action efforts have shown, climate change communication is not a straightforward task and deserves specific attention. The 'Handbook for IPCC authors on principles for effective communication and public engagement on climate change' explains that 'talking about the real world', 'connecting with what matters to people' and 'telling a human story' are key principles in climate change communication.

How people feel about a given situation has a powerful influence on their decisions about how to react (and potentially act), i.e., people do not necessarily act when they have better information. The Handbook explains how to use this information to influence decision-making, to understand...

HOW DOES IT WORK?

Narrative tools with an attention and action focus regarding climate adaptation.

As an example, the pilot climate change project communications team data you want to communicate: temperature targets, statistics and graphs, a science when presented.

Let's consider an office and community engagement in climate change adaptation planning and implementation – getting started.

Steps 2, 3 and 4: Identify and assess your climate vulnerabilities, risks and adaptation options

This part of the manual is intended for stakeholders and citizens to build upon their knowledge and their experiences to:

- Identify and assess the initial risks based on the scope of the initial assessment included within the vulnerability and risk assessment process, i.e., greenhouse, adaptive capacities (organizational capability and technical, financial and knowledge support) and exposure to climate hazard (i.e., sea level rise).
- Identify and assess the initial relevant options to address resultant climate vulnerabilities, risks and opportunities.
- Evaluate their relative understanding of their motivations, core beliefs, values, feelings, and values in relation to climate change.

Participatory activities and **focus groups and stakeholder workshops** as core activities for gathering and preparing to identify and prioritize climate vulnerabilities, risks and opportunities, i.e., when to focus on groups and to understand common concerns and opportunities for communication.

There are a number of illustrative activities:

Examples of engagement:

- For citizens
- For business
- For experts

This manual is a living document. You are invited to contribute to its ongoing development.

Stakeholder and Citizen Engagement in Climate Adaptation: A DIY Manual

September 2023 - 91

[Link to the Manual](#)

Example 2- National survey on climate change and acceptability of adaptation measures e.g. water re-use

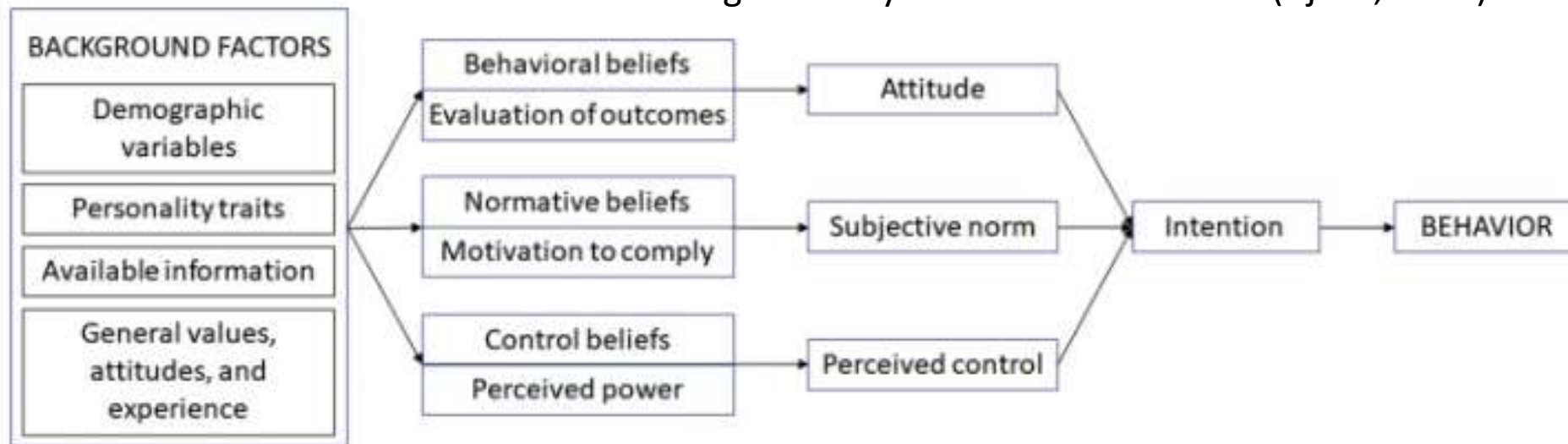




Citizens and Climate Change 2023

Authors: Lara Lázaro Touza, Carmen González Enríquez y José Pablo Martínez

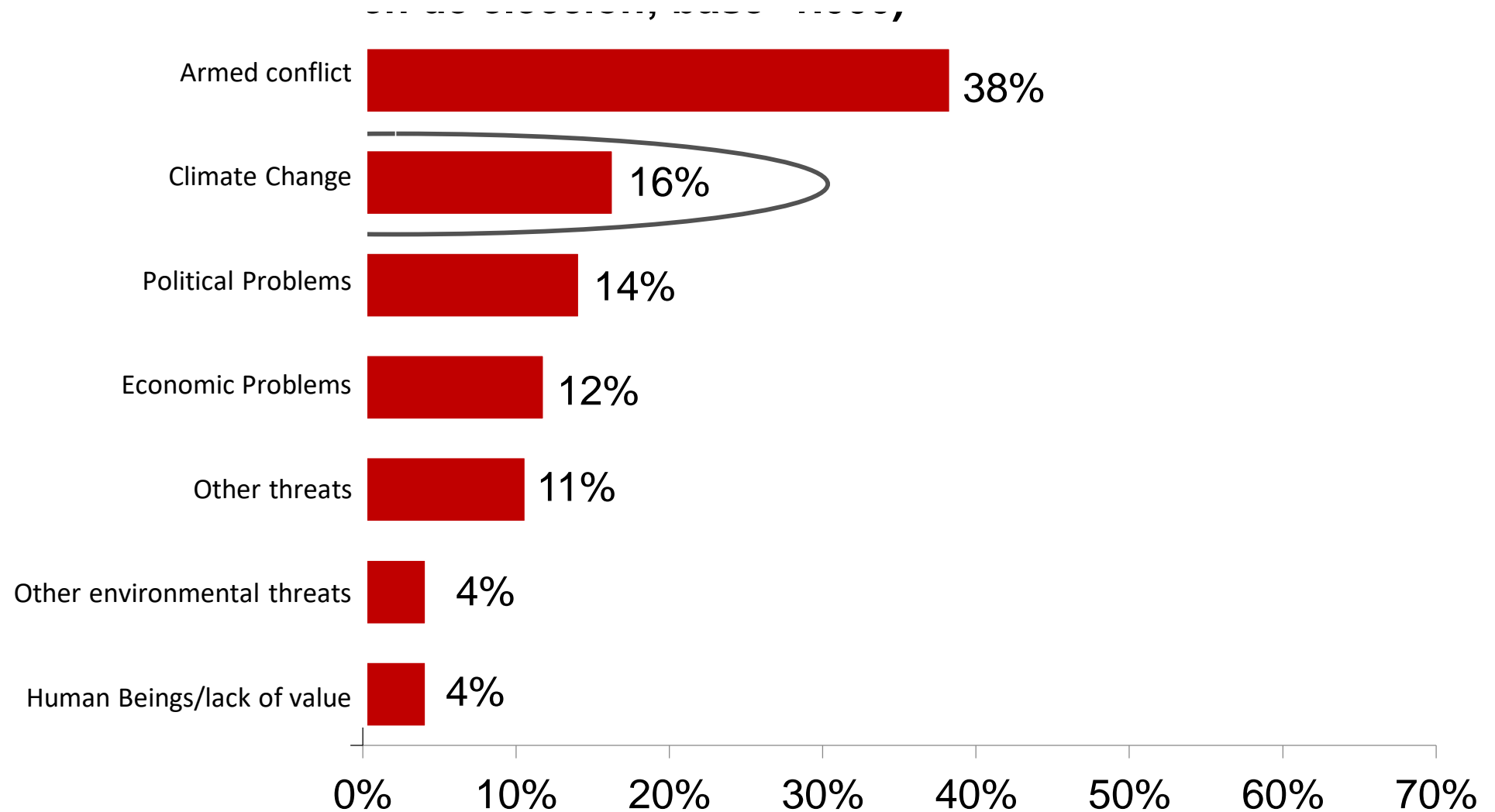
Theoretical Framing - Theory of Planned Behaviour (Ajzen, 1991)



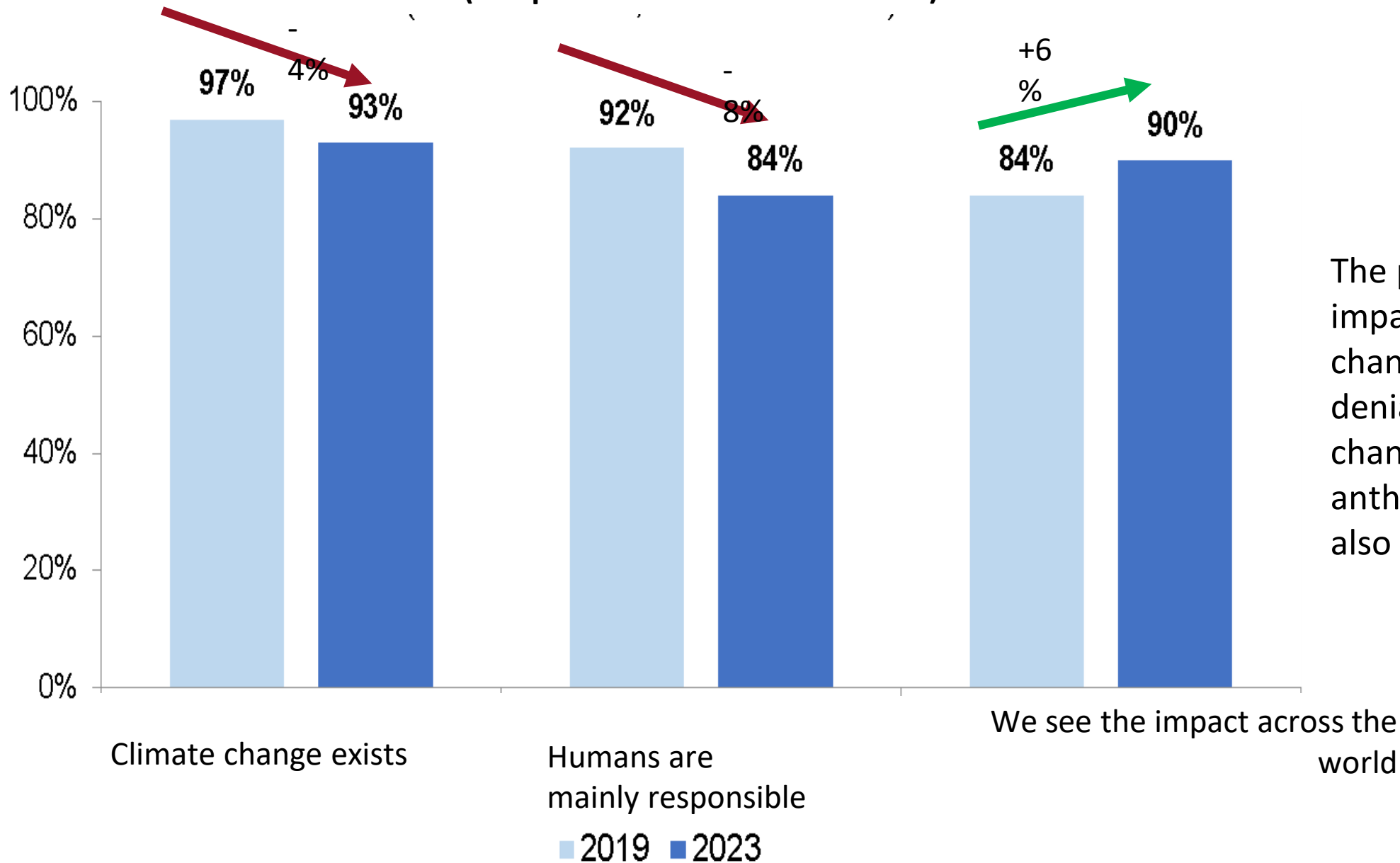
Source: Adapted from Ajzen I. From intentions to actions: a theory of planned behavior. In: Kuhl J, Beckmann J, ed. *Action Control*. Berlin, Heidelberg: Springer Berlin Heidelberg; 1985. p. 11–39.

Greatest concerns and Climate change

Fig 2 Biggest threat currently faced in the world (sample: 1000)



**Fig 17 Evolution on climate change perception
(sample 2019:990 and 2023:1000)**

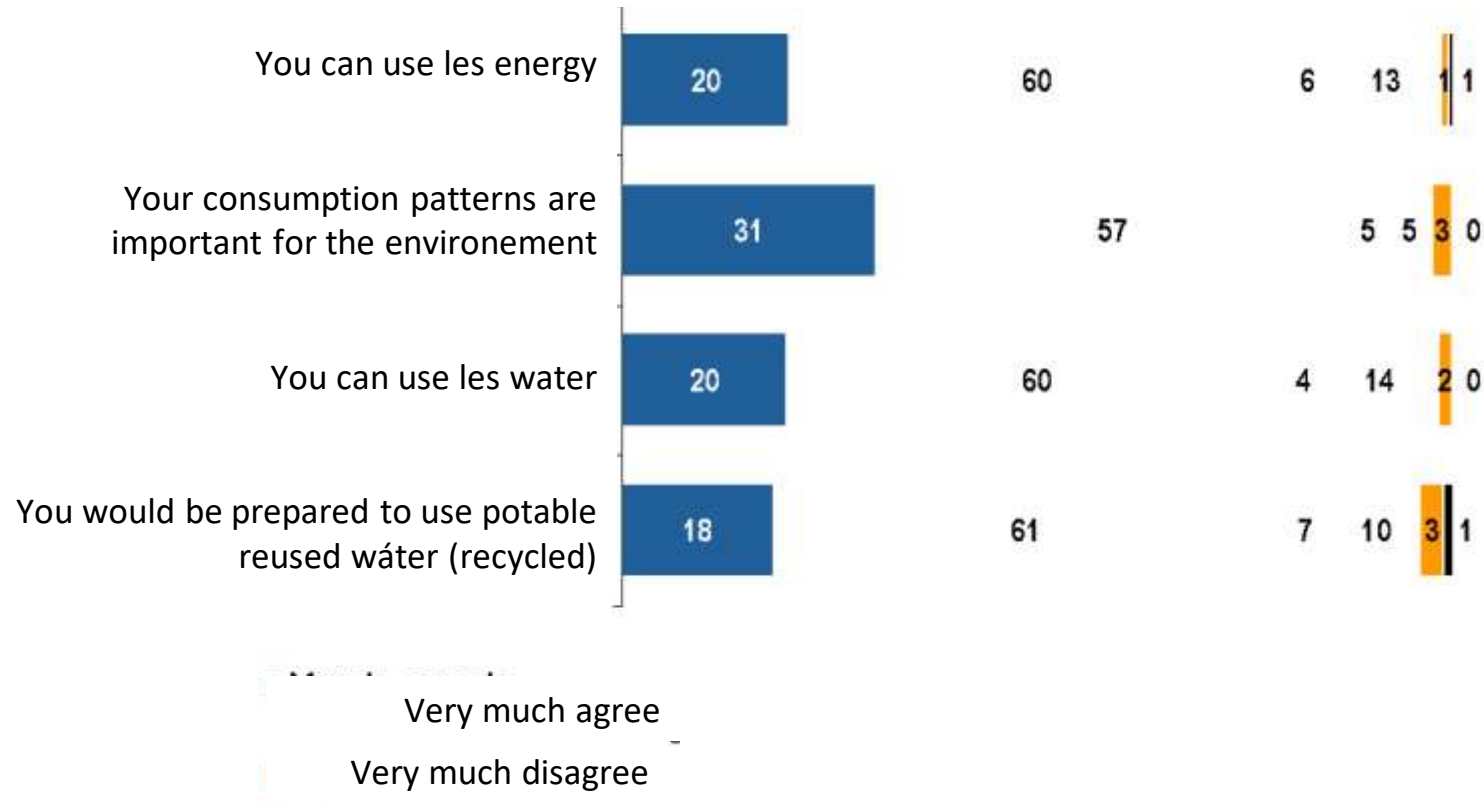


The perception on the impacts from climate change increases while denial on climate change and its anthropogenic causes also increases

Survey on citizens

incl. acceptance of non-conventional water use

Fig 6 Perception on the capacity of action by individuals and acceptance of reused water (sample: 1000)



A significant percentage believes in its self-capacity

Example 3- Capacity building for public authorities on climate data and health



Technical Proposal: Training Provider in Data Science, Climate and Health



Global Partnership
for Sustainable
Development Data

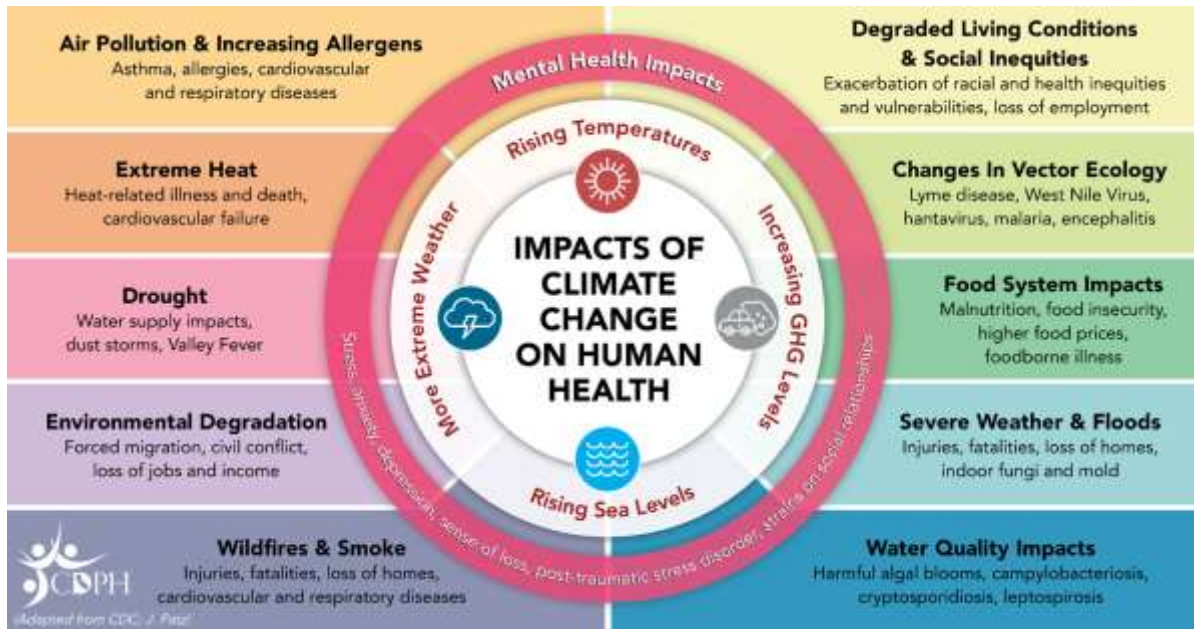


Empower Insight



ICATALIST

openup:



Adapted from CDC, J. Patel



Thank you for your attention! Gracias! Merci!

Contact: elopezgunn@icatalist.eu

Copyright [2024] [Lopez Gunn, E et al], all rights reserved.
For reproduction permission and all other issues, please contact [author email]

