

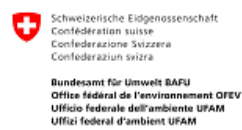


**Global Workshop**  
**on Droughts in Transboundary Basins**  
 26-27 February 2024, Geneva

# Zimbabwe's activities on water allocation in the context of impacts of drought



Shephard Shereni  
 Ministry of Lands, Agriculture, Fisheries Water  
 Rural Development

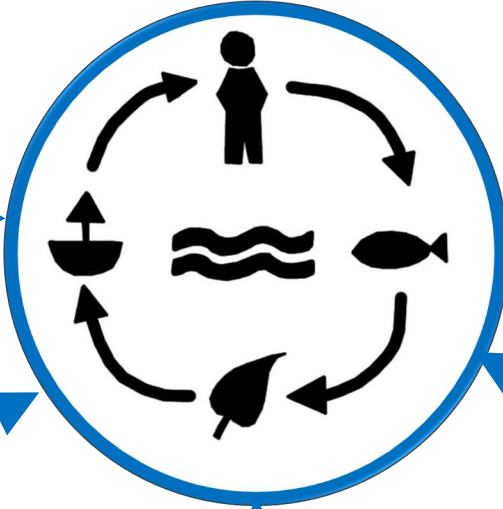


# Water Management in Zimbabwe

Water use efficiency



Sustainable water use



Equity to access



Water Laws



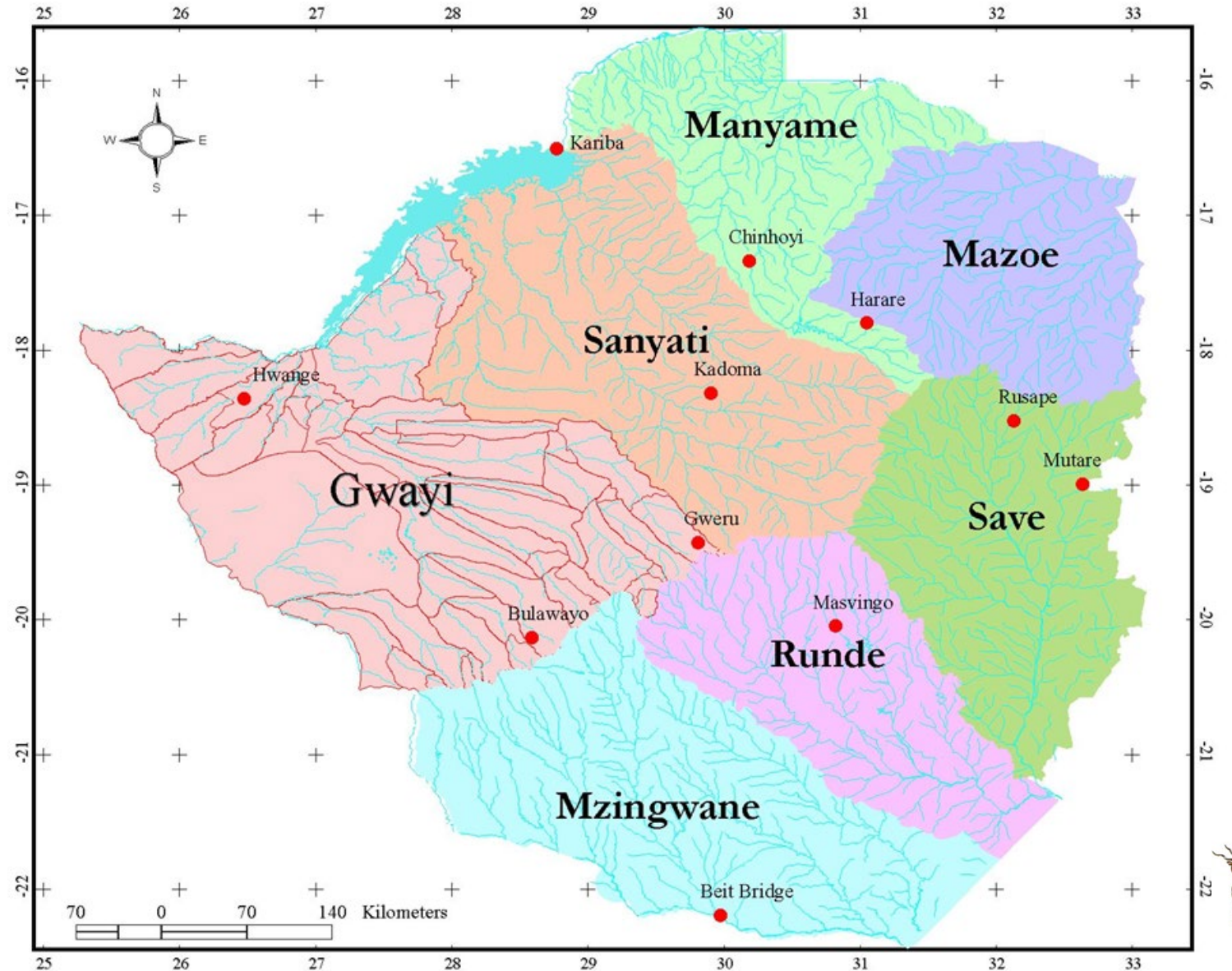
Stakeholder Engagement



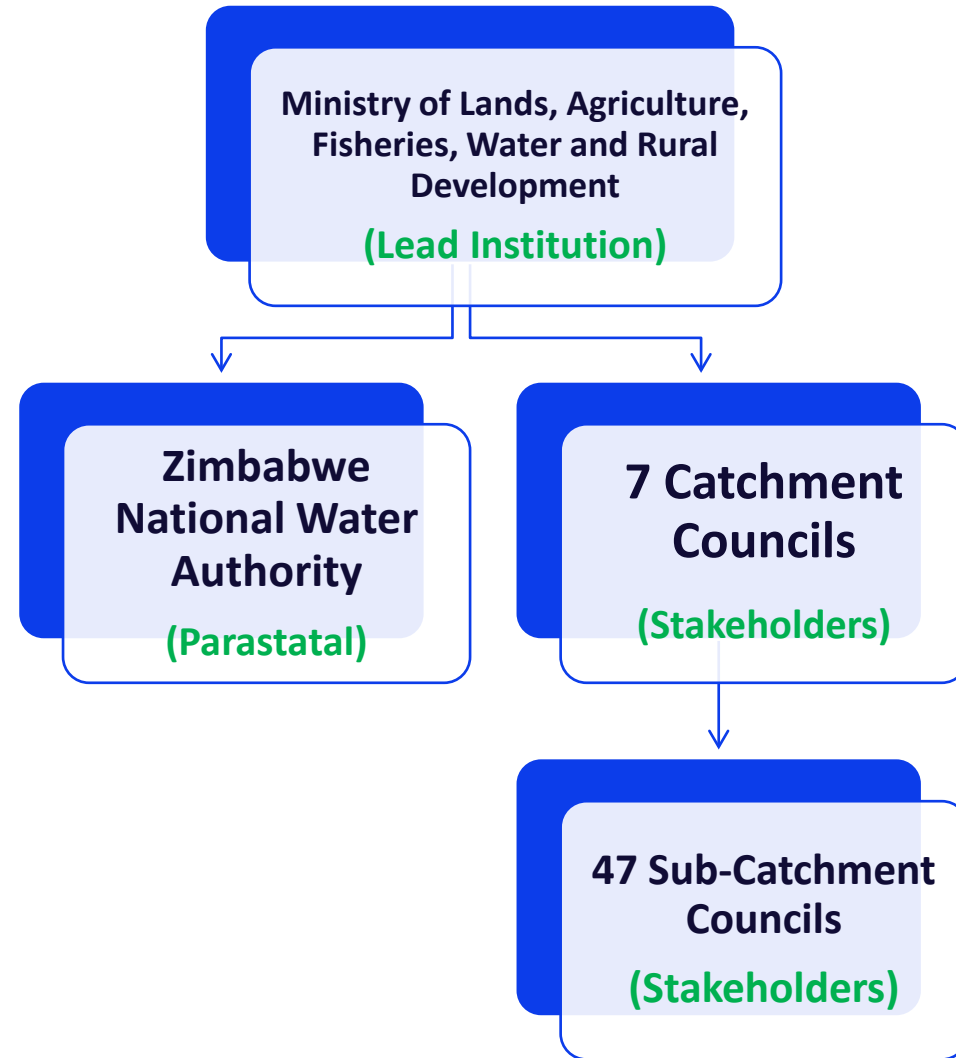


# Water Management in Zimbabwe

- The country is divided into 7 river catchments or river systems.
- Each catchment has a River System Outline Plan(RSOP)

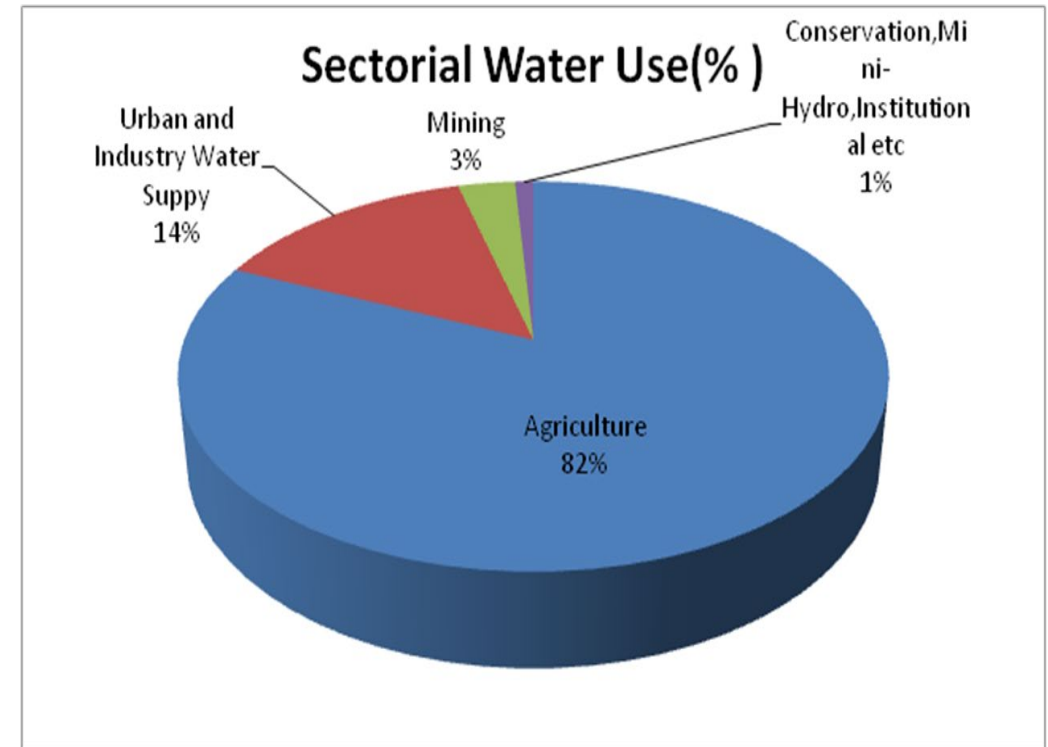


# Key Players in Water Allocation



# Water use

- Water Use Permits
- River system outline plans
- Declaration of water shortage areas
- Water development restriction areas
- Groundwater monitoring for main aquifers
- Reservation of water



# Water Resources Development

- The Country has a potential to store 47.3 Billion m<sup>3</sup> but currently only 22% (10.5 Billion m<sup>3</sup>) of this has been developed.
- The potential yield of groundwater is estimated at 3,0 Billion m<sup>3</sup> and the groundwater usage by volume is in the order of 1x10<sup>9</sup>m<sup>3</sup>

<b>CATCHMENT</b>	<b>MAIN PROVINCE</b>	<b>PRESENT STORAGE (ML)</b>	<b>POTENTIAL STORAGE (ML)</b>
Gwayi	Matabeleland North	203,743	3,711,912
Manyame	Mashonaland West	2,593,786	6,611,120
Mazowe	Mashonaland Central	310,978	9,163,486
Mzingwane	Matabeleland South	1,296,940	3,448,650
Runde	Masvingo	4,287,859	4,295,242
Sanyati	Midlands	594,223	7,809,908
Save	Manicaland	1,176,368	12,188,046
<b>TOTAL</b>		<b>10,463,897</b>	<b>47,228,364</b>



# Transboundary Water Resources Management

The country is party to the following River Basin Organizations



- Buzi, Pungwe and Save Watercourses Commission  
(Zimbabwe and Mozambique)



# Transboundary Water Resources Management

## General Principles adhered to;

- Reasonable and equitable use
- Data and information sharing
- Notification of planned measures
- Prevention, reduction and control of pollution
- Promotion of partnerships in effective and efficient water use
- Prevention of occurrence of disputes
- No harm rule

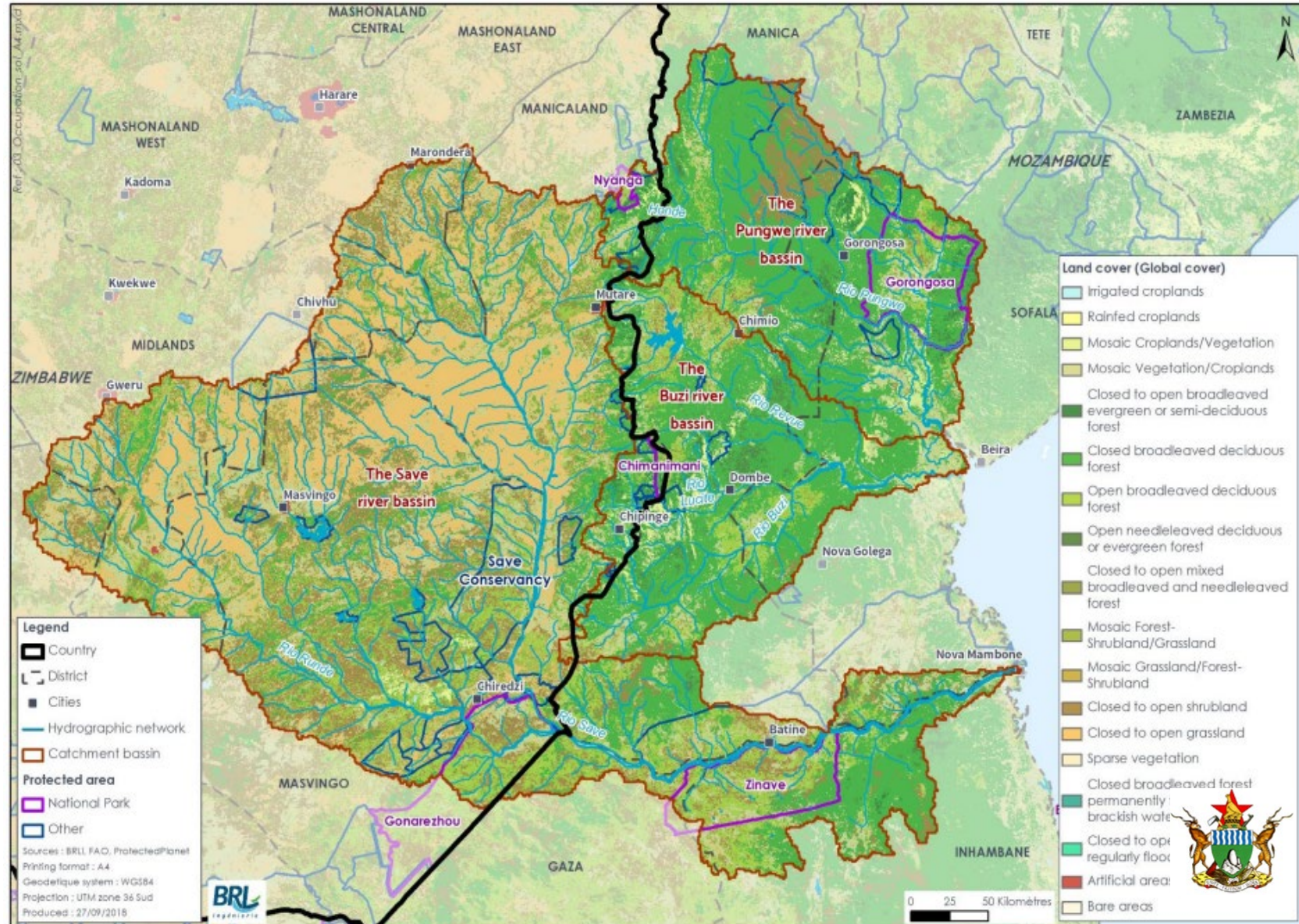




# Priorities for Water Allocation

## Buzi, Pungwe and Save Watercourses Commission

1. Urban, rural and livestock consumption
2. Industrial, mining water use
3. Irrigation
4. Environmental flows
5. Others



# Activities in response to drought

## National Level

- The region is currently in an El-nino period
- Implementation of relief measures to farmers for the 2023/2024 rainfall season (*promotion of irrigation through provision of incentives for farmers*)
- Growing of more drought resistant crops among other measures
- 10 Dams under construction around the country to increase storage
- Groundwater utilization through rural development programs (drilling boreholes, establishing horticulture gardens, fisheries and water supply)

## Transboundary Level

- **LIMCOM** - Integrated Transboundary River Basin Management for Sustainable Development of the Limpopo River Basin
- **BUPUSA** – Management of Competing Water Uses and Associated Ecosystems in Pungwe, Busi and Save Basins
- **ZAMCOM** - Programme for Integrated Development and Adaptation to Climate Change in the Zambezi River Basin
- Working on an agreement with South Africa to supply treated water from Beitbridge Town in Zimbabwe to Mussina Town in South Africa.



# Thank you



Email address: [sherenishep@gmail.com](mailto:sherenishep@gmail.com)



Phone: +263774825440



Twitter: [@ShepShedza](https://twitter.com/ShepShedza)

