



UNECE



wge Working Group on Effects of the
Convention on Long-range
Transboundary Air Pollution

ICP MODELLING AND MAPPING PROGRESS IN WORKPLAN 2024-2025

EMEP SB / WGE EXTENDED BUREAUX Meeting (Geneva, 28 Feb. – 01 Mar. 2024)

Alice James, ICP M&M chair

Markus Geupel & Thomas Scheuschner & Christin Loran, CCE

Filip Moldan and Sara Jutterström, CDM



Contacts

alice.james@ineris.fr



cce@uba.de



filip.moldan@ivl.se

ICP M&M Task Force news and ongoing activities

Communication with NFCs and other interested people via Newsletters

Condensed information to NFCs on main ICP M&M topics

#1 in July 2019

...

#8 in July 2023

#9 in January 2024

<https://www.umweltbundesamt.de/en/news-0>



ICP M&M Task Force news and upcoming activities

40th TF meeting & 31th CCE workshop Oslo, 23 – 25 April 2024

- 2 full days + 1 morning session (hybrid)
- Supported by Norwegian Ministry of Climate and Environment and the Norwegian Environment Agency

Main topics:

- Discuss outcome of the recent CfD ($CL_{emp}N$)
- Scientific work linked to Critical Loads
- Current and upcoming Workplan activities including next CfD



Norwegian Institute for Water Research



➤ [Registration for the annual ICP M&M meeting 2024 in Oslo \(feel free to join us\)](#)

Previous Workplan 2022-2023 (CCE related items only)

WP item	Activity description / objectives	Expected outcome /deliverable	Lead body(ies)	Resource requirements and/or funding sources
#1	Empirical Critical Loads: Review and revision of the CLemp N published in 2011 (continued)	Report on Empirical Critical Loads in Europe (2022)	ICP M&M / CCE	National Focal Centres and recommended contributions
#2	Harmonization of the receptor map for Europe	Harmonized receptor map for Europe (2023)	ICP M&M / CCE	CCE and Germany
#3	Critical Levels of ammonia : literature review and empirical data provision supporting a workshop	Organization of an International Workshop and Workshop report	ICP M&M / CCE	CCE and Germany



Current Workplan 2024/25

Workplan item	Activity description/objective	Expected outcome/ deliverable	Lead body(ies)	Resource requirements and/or funding source
1.1.1.20	Define Dynamic Modelling indicators for protection of biodiversity and Dynamic Modelling outputs	Instructions for 24/25 CfD	ICP M&M, CDM	In-kind contributions from Sweden, Recommended contributions
1.1.1.21	Launch 24/25 CfD to: (a) update SMB CL; and (b) include dynamic modelling of biodiversity recovery and restauration	CfD: results to be included in CCE status report	ICP M&M, CCE, CDM	In-kind contributions from Sweden and Germany and recommended contributions
1.1.1.22	Empirical Critical Loads: Illustrate and map exceedance data, including CfD 23/24 outcome and updated 2023 receptor map	Included in CCE status report and brochure	ICP M&M, CCE	In-kind contributions from Germany and recommended contributions
1.1.1.23	Update policy relevant CL data sets and find ways to use these to assess risks of biodiversity loss on large geographic scale based on outcomes of items 1.1.1.21–1.1.1.22	Dataset: results to be included in CCE status report	ICP M&M, CCE	In-kind contributions from Germany
1.1.1.24	Critical Levels of NH ₃ : map exceedance data	Included in CCE status report	ICP M&M, CCE	In-kind contributions from Germany
1.1.1.25	Update background database for EECCA and Türkiye (with, e.g., updated 2022 receptor map)	Included in CCE status report	ICP M&M, CCE	In-kind contributions from Germany

Current Workplan 2024/25 - CCE

Harmonization of the Receptor map for Europe – completed

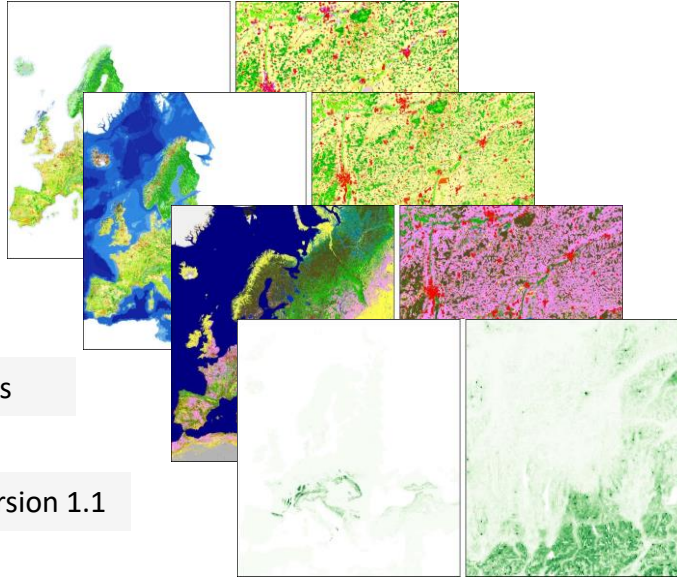
CORINE Land Cover 2018

EEA Ecosystem Type Map v3.1

Copernicus Global Land Cover

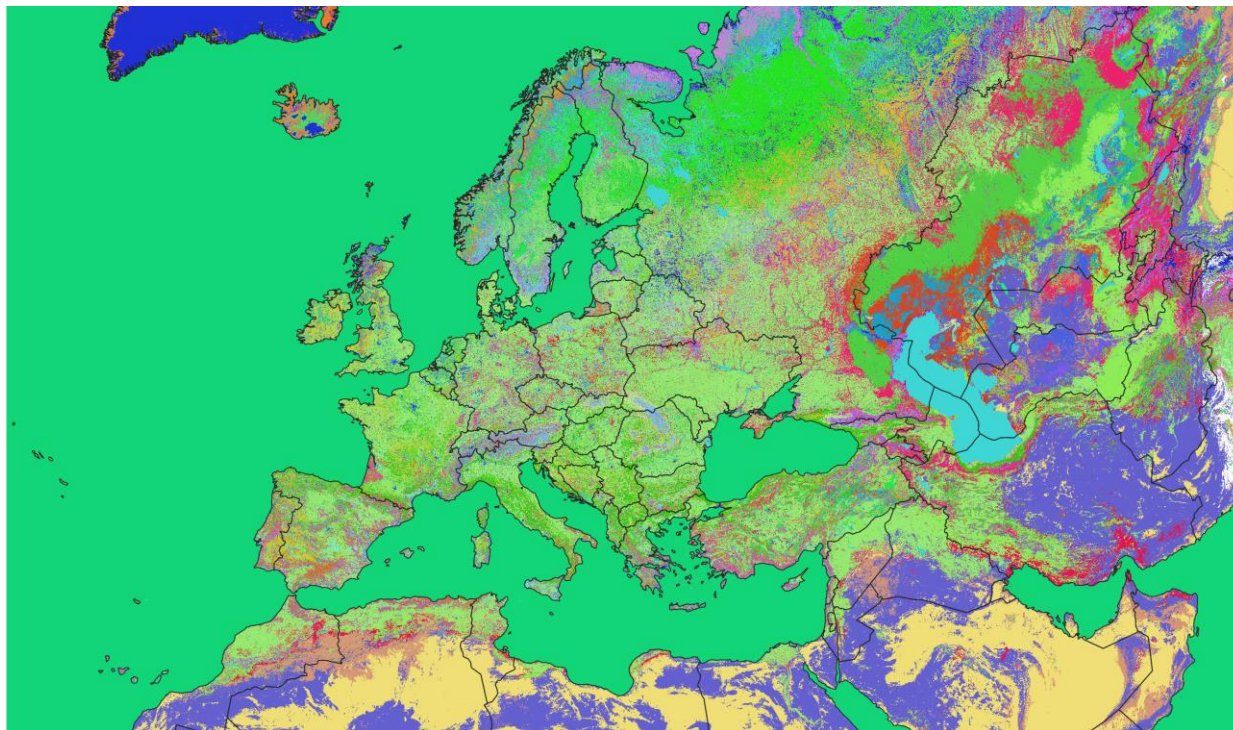
Global Potential Natural Vegetation Maps

Harmonized World Soil Database Version 1.1



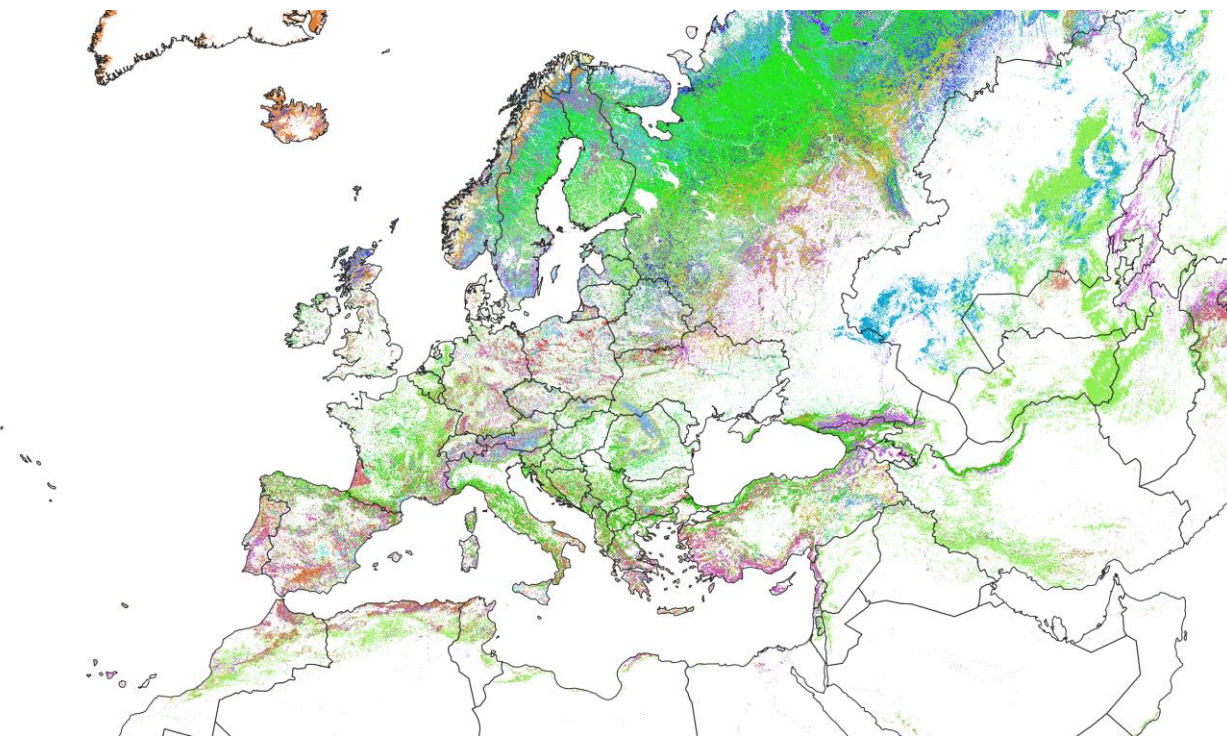
<https://www.umweltbundesamt.de/en/publikationen/creation-of-a-harmonized-land-cover-map-as-an>

Current Workplan 2024/25 – CCE - Receptor map



- Extended spatial scope
- Harmonized method for deriving information about distribution of ecosystems
- Classification of 219 classes (EUNIS system, up to detail level 3)
- Final map with resolution (100 x 100m)

Current Workplan 2024/25 – CCE - Receptor map



- 87 matches $CL_{emp}N$ list

Next steps:

- Aggregation to EMEP deposition grid ($0.1 \times 0.1^\circ$)
- Estimation of covered area (absolute and relative)
- Technical discussion at the upcoming ICP M&M meeting in Oslo
- Prepare the export to TFIAM/IIASA

CCE other ongoing activities (selection)

Steady-state Critical Loads for acidification and eutrophication

- UBA-Project on the climate sensitivity of SMB-Critical Loads on German ICP Forests Level II plots
 - Impact of changes in CL parameters (including adapted site management)
 - Report in 2024

Extended collaboration outside the convention

- CCE chaired the session *“Atmospheric deposition and radioactive contamination: consequences for forest ecosystems”* at the **“IUFRO RG 8.04 Conference in Bangkok”**
- Participation on activities of the Acid Deposition Monitoring Network in East Asia – **EANET**
- Participation at FONDA **Twinning** Horizon Europe project Aveiro, Portugal – planned 03/2024

Current Workplan 2024/25

Workplan item	Activity description/objective	Expected outcome/ deliverable	Lead body(ies)	Resource requirements and/or funding source
1.1.1.20	Define Dynamic Modelling indicators for protection of biodiversity and Dynamic Modelling outputs	Instructions for 24/25 CfD	ICP M&M, CDM	In-kind contributions from Sweden, Recommended contributions
1.1.1.21	Launch 24/25 CfD to: (a) update SMB CL; and (b) include dynamic modelling of biodiversity recovery and restauration	CfD: results to be included in CCE status report	ICP M&M, CCE, CDM	In-kind contributions from Sweden and Germany and recommended contributions
1.1.1.22	Empirical Critical Loads: Illustrate and map exceedance data, including CfD 23/24 outcome and updated 2023 receptor map	Included in CCE status report and brochure	ICP M&M, CCE	In-kind contributions from Germany and recommended contributions
1.1.1.23	Update policy relevant CL data sets and find ways to use these to assess risks of biodiversity loss on large geographic scale based on outcomes of items 1.1.1.21–1.1.1.22	Dataset: results to be included in CCE status report	ICP M&M, CCE	In-kind contributions from Germany
1.1.1.24	Critical Levels of NH ₃ : map exceedance data	Included in CCE status report	ICP M&M, CCE	In-kind contributions from Germany
1.1.1.25	Update background database for EECCA and Türkiye (with, e.g., updated 2022 receptor map)	Included in CCE status report	ICP M&M, CCE	In-kind contributions from Germany

CDM Ongoing Activities for Workplan 24/25

Hand over to Filip Moldan (CDM)