

The global map of Transboundary Aquifers

Arnaud Sterckx, Ph.D.

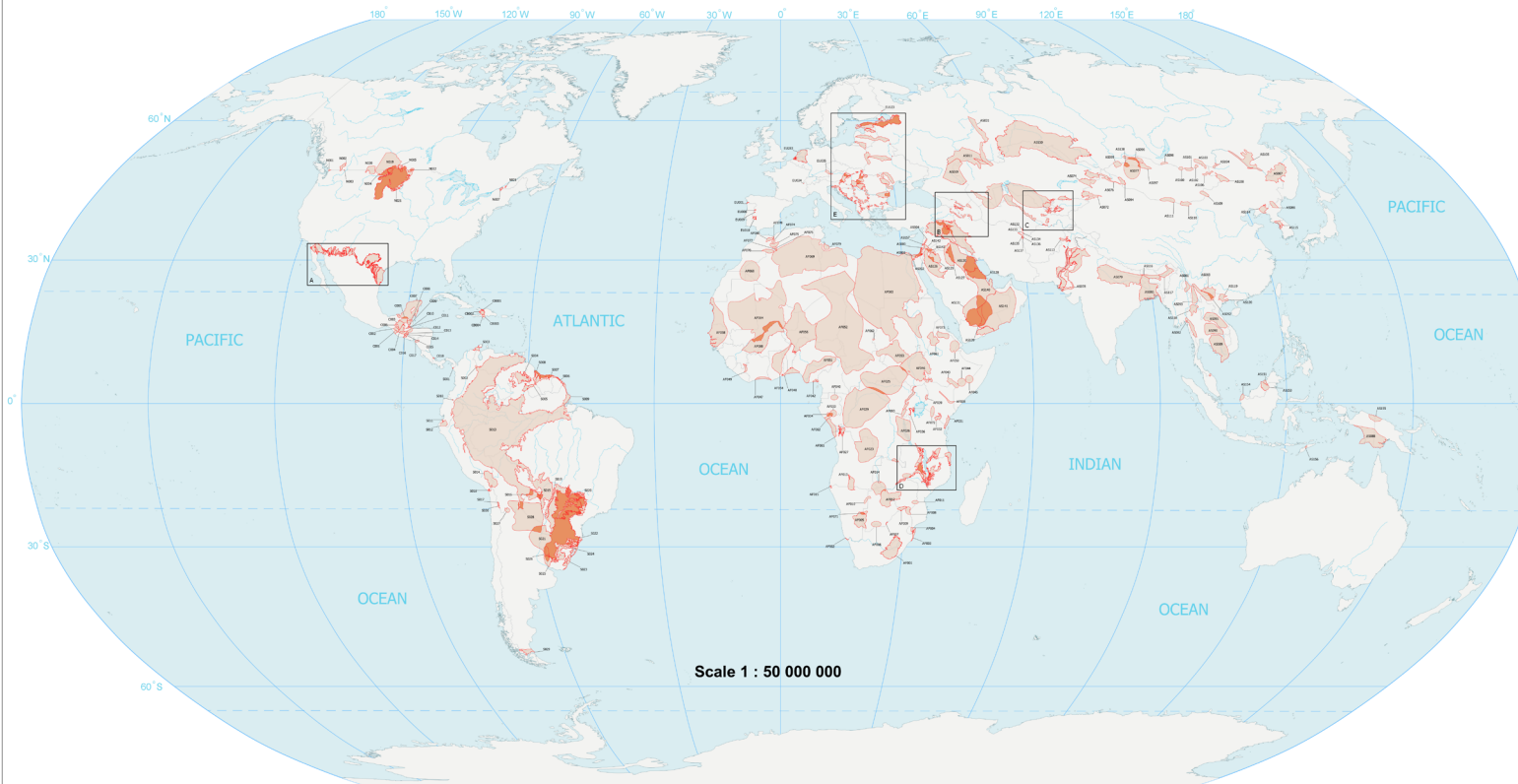


International Groundwater Resources Assessment Centre



Transboundary Aquifers of the World

- Update 2021 -



Legend

Occurance and extent

- aquifer
- overlapping area

Type of TBA delineation

- confirmed boundary
- unconfirmed boundary

Geographic elements

- rivers
- lakes
- detailed maps

Prepared by IGRAC

Base maps

Country borders: The United Nations Clear Map (2018)
Rivers and lakes: ESRI (2018)

Map projection

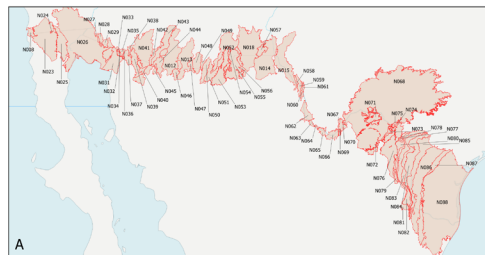
Robinson projection, geographic coordinates,
spheroid WGS84, longitude of central meridian 0°

© IGRAC, December 2021

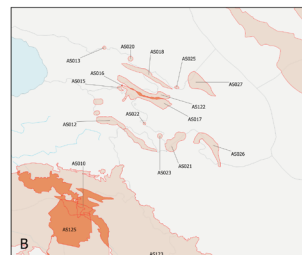
Released under the Creative Commons licence
Attribution Non-Commercial Share Alike.

Disclaimer

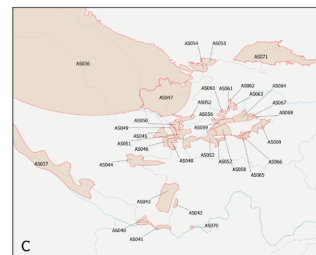
The boundaries and names shown and the designations
used on this map do not imply official endorsement or
acceptance by the United Nations. A full disclaimer is
available on the back of this map.



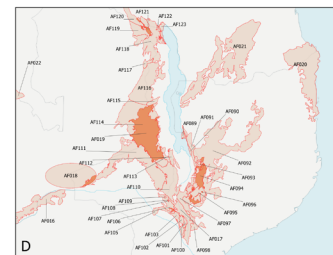
1 : 8 500 000



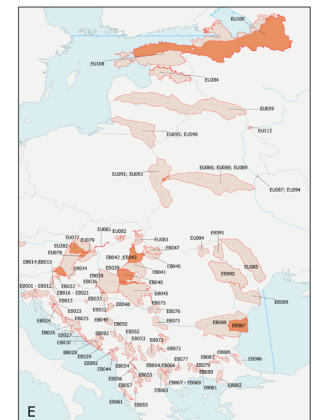
1 : 9 000 000



1 : 9 000 000

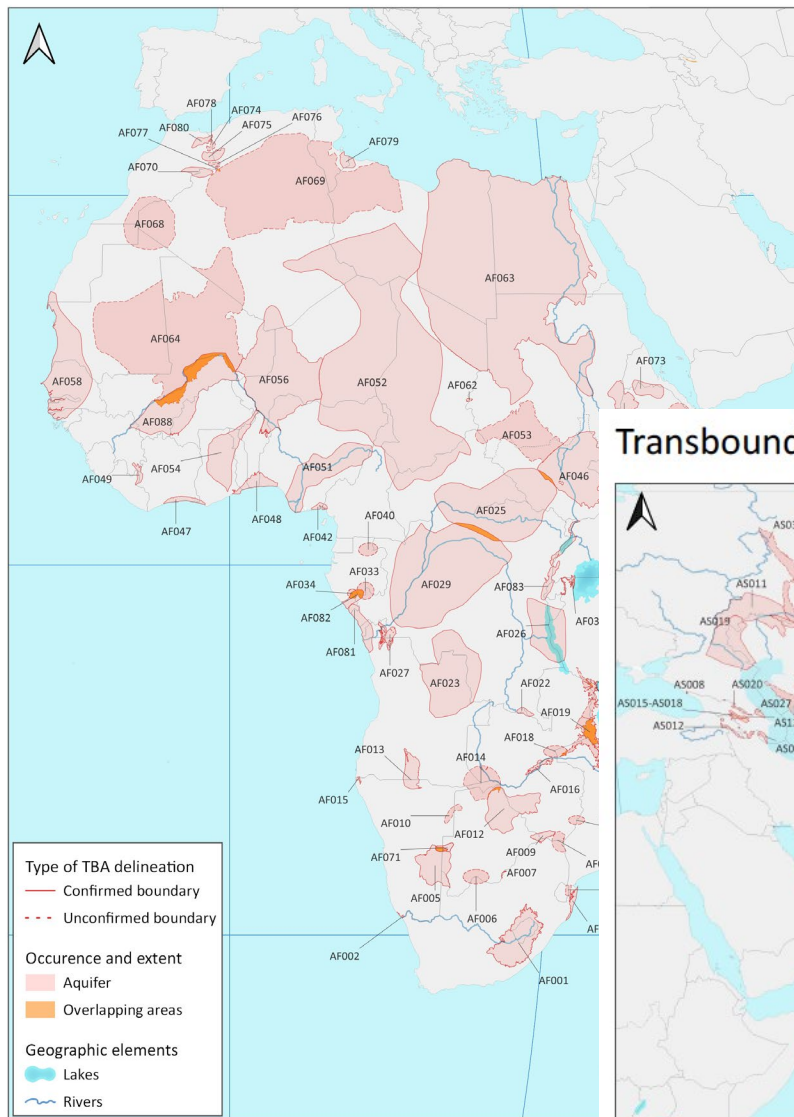


1 : 9 000 000



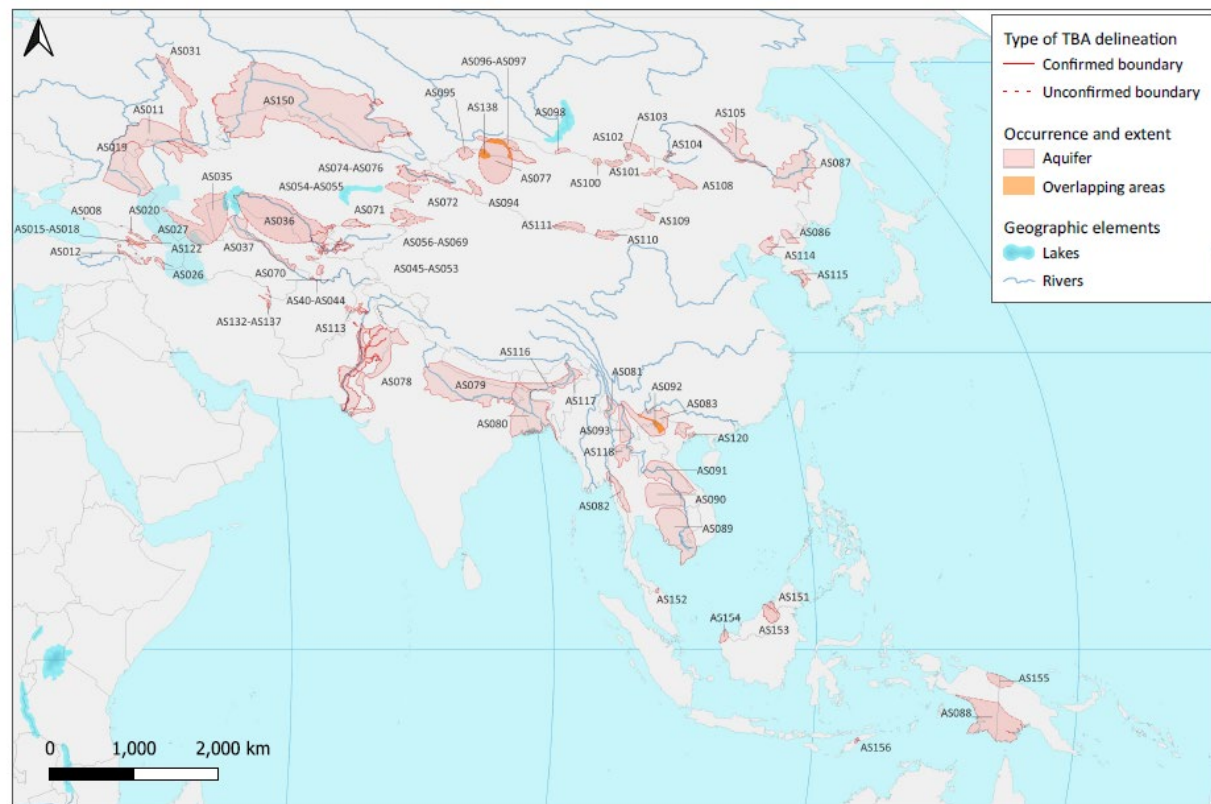
1 : 13 000 000

Transboundary Aquifers of Africa

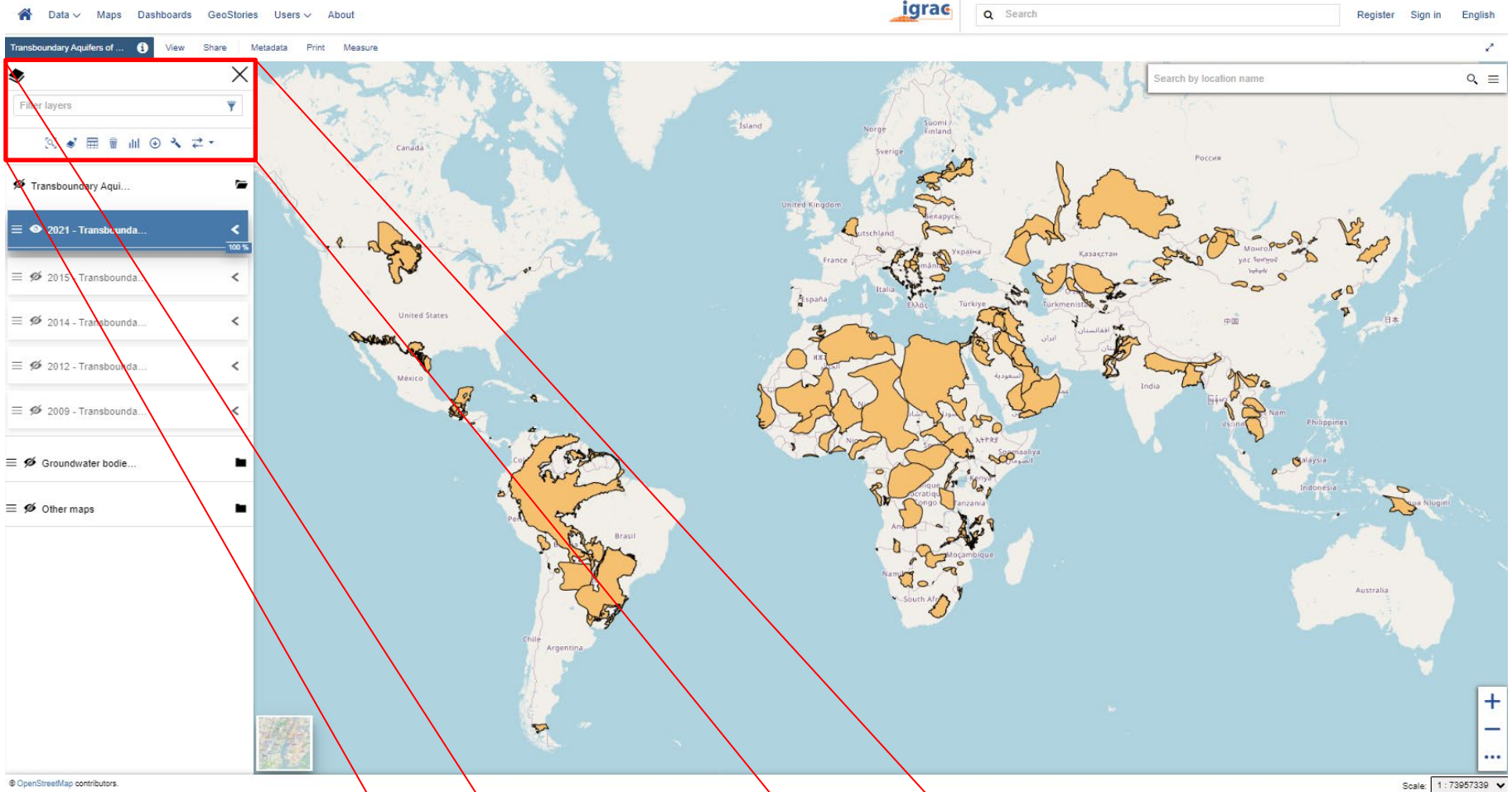


Also available in regional / continental versions

Transboundary Aquifers of Asia and Oceania



<https://ggis.un-igrac.org/view/tba/>



- The Global TBA map results from the compilation of various assessments that have been carried out, including e.g.
 - First and Second Assessments of Transboundary Rivers, Lakes and Groundwaters for Europe and Central Asia (UNECE 2007, UNECE 2011);
 - Inventory of Shared Water Resources in Western Asia (UNESCWA and BGR, 2013);
 - GEF-funded Transboundary Water Assessment Programme (TWAP), 2015;
 - Activities under the UNESCO-led program ISARM (Internationally Shared Aquifer Resources Management)
- To know more about the making of the TBA map, see <https://www.un-igrac.org/stories/transboundary-aquifers-global-outline-2021>
- Due to the lack of data and groundwater assessment, there is still room for improving the map. Countries are invited to share whatever information that could help updating the map, such as new TBA delineations, reports or publications on TBAs.

Thank you for your attention!



International Groundwater Resources Assessment Centre

arnaud.sterckx@un-igrac.org

www.un-igrac.org

Delft, The Netherlands



United Nations
Educational, Scientific and
Cultural Organization



International
Hydrological
Programme



World Meteorological
Organization



Government of
The Netherlands