

WORKING PARTY ON LIGHTING AND LIGHT-SIGNALLING (89TH SESSION)

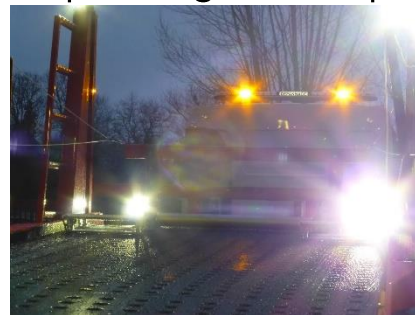
Informal document from France:

- ✓ Work lamps

Reminder of GRE (88th session)

Document GRE-88-08-Rev.1

- ✓ UN Regulation No. 86 « Installation of lighting and light-signalling devices for **agricultural tractors** »:
 - ✓ 2.6.21: "Work lamp" means a device for illuminating a working area or process.
 - ✓ 6.13.9. This lamp shall not be combined or reciprocally incorporated with another lamp.
 - ✓ No specificities related to driving, switch off on the road, do not dazzle...
- ✓ These lights **are not** « manoeuvring lamp » (R48, 2.7.3.1).
- ✓ Usually switch on/off by the driver (no automatic switch-off depending on the speed of the vehicle for example).



Opinions about work lamps

Many different national rules (GRE 88 discussions):

- ✓ Colour: White, yellow...
- ✓ Not at the rear of the vehicle...
- ✓ Type of vehicle: industrial, agricultural, all type...
- ✓ Use: parking only, low speed, work condition only, loading/unloading
- ✓ Do not dazzle
- ✓ ...

Main principle

- The main purpose is to have one harmonised set of rules at UNECE level
- Specific additional rules can still be possible at national level

Proposal

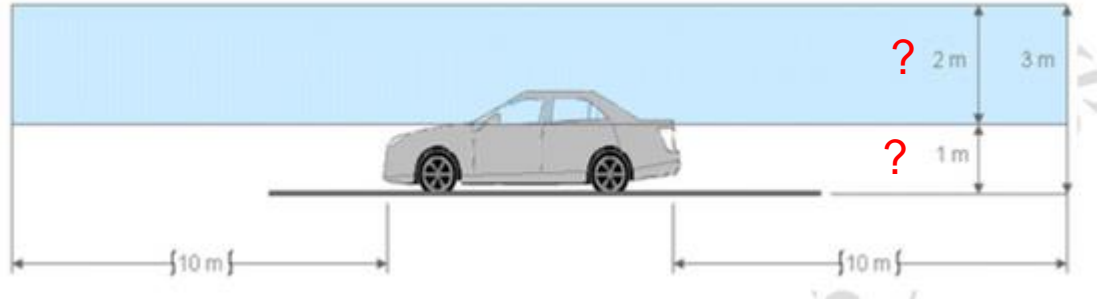
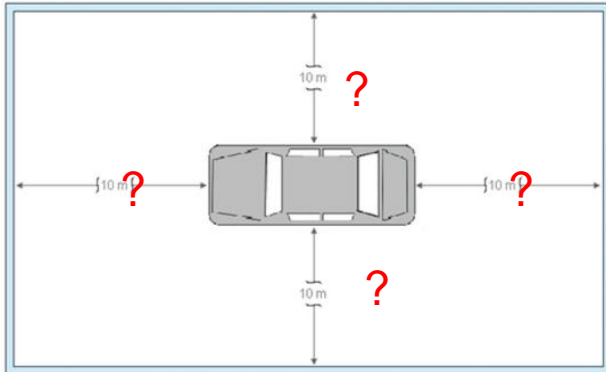
✓ UN Regulation No. 48 (1/2):

- "Work lamp" means a device for illuminating a working area or process (identical to the regulation n°86).
- Electrical connections: *"This lamp shall be operated independently of all other lamps in view of the fact that it does not illuminate the road or act as a signalling device on the road"* (identical to the regulation n°86).
- Operating tell-tale mandatory
- The work lamps shall be automatically switched off if the forward speed of the vehicle exceeds [15 km/h] and they shall remain switched off until the conditions for activation are met again
- The colour of the light emitted shall be [white].

Proposal

✓ UN regulation n° 48 (2/2):

- This lamp shall not be combined or reciprocally incorporated with another lamp.
- Requirement shall allow the use of all technologies
- Shall be different if LHD or RHD (do not illuminate the opposite lane of traffic)
- Shall not create any glare (annex 14 requirements to be followed or adapted)



What is your opinion on the subject?

WORKING PARTY ON LIGHTING AND LIGHT-SIGNALLING (88TH SESSION)

Informal document from France:

- ✓ Work lightnings

Patrice.baillet@developpement-durable.gouv.fr