



Food and Agriculture Organization
of the United Nations



Information Exchange and the Use of Ports

FAO Global Information Exchange Systems



Agreement on Port State Measures (PSMA)

1. **PSMA App** to share data on Designated Ports and National Contact Points (article 7 and 16)
2. **Global Information Exchange System (GIES)** for direct electronic exchange of information such as inspection results and port denials (articles 9, 15 and 16).



Global Record of Fishing Vessels, Refrigerated Transport Vessels and Supply Vessels

FAO Global Record

A collaborative global tool that gathers and disseminates through a unique access point, certified, relevant & up-to-date information on vessels used for fishing or in support of fishing activities.

- **Goal:** to combat IUU fishing through increased transparency and traceability
- **Nature:** a single hub for flag State fleet information
- **Scope:** all fishing and fishing-related vessels (transport, support and supply vessels):
 1. That have an IMO number (as per IMO Resolution A.1117(3))
 - LOA \geq 24m
 - $12\text{m} \geq \text{LOA} < 24\text{m}$ that operate in waters beyond national jurisdiction
 2. Whose products access international markets.
- **Background:** set up through the FAO Committee on Fisheries and specifications agreed by countries through the Global Record Working Group

FAO Global Record - Port of registration



How is the port code list populated in the Global Record?

Through a bulk upload functionality with excel files of the 'Port' module, Global Record offers users the ability to upload their list of ports, with the following data fields:

- Country ID (ISO alpha-3 code matching user country)
- Port code (alphanumeric)
- Port details (alphanumeric)

How are ports used in the Global Record?

When uploading the 'Vessel' module on the Global Record, one of the data fields refers to the port of registration of the vessel.

This relates to the national registration process for vessels, and therefore is not necessarily a port accommodating for fisheries related activities

FAO Global Record - Port of registration

	Port codes created in GR (as of 27/09/2023)
Total	5443
Unique	4953

	Usage of port of registration in GR (as of 03/06/2023)
Total vessels	2982
Unique ports used	453

- Currently 16 000 vessels on GR, approximately two-thirds of total eligible fleet
- 68 countries have provided data
- Some duplication is present on data entry
- Most port codes are custom with 3-alpha country code, following by an alphanumeric
- In upload instructions, FAO suggests that UN/LOCODE is used when available as the port code

Recommendations of GRWG6

The Global Record Working Group (GRWG) is the forum where FAO Member States advise FAO on aspects related to the Global Record

At **6th meeting of the GRWG** in December 2022, the Secretariat of the UNECE was invited to present on the UN/LOCODE. Following discussions, the Working Group **concluded** that:

'The GRWG noted that not all vessel registration ports currently have a UN/LOCODE. In this regard, the Group welcomed the UNECE providing a process whereby ports not currently registered with a UN/LOCODE could be registered within 6 months of asking, and that new types or categories of ports could be added in the UN/LOCODE registry in the future if deemed necessary. The Group expressed concerns that these 6 months can be too long in some cases.'

The Agreement on Port State Measures

The Agreement on Port State Measures (PSMA) is the first binding instrument to specifically target illegal, unreported and unregulated fishing (IUU fishing)

➤ How?

Its objective is to prevent, deter and eliminate IUU fishing by preventing vessels engaged in IUU fishing from using ports and landing their catches.

In this way, the PSMA reduces the incentive of such vessels to continue to operate while it also blocks fishery products derived from IUU fishing from reaching national and international markets

Relevant Articles of the PSMA

- **Article 7** – Parties are requested to designate ports to which foreign vessels may request entry and should communicate these ports to FAO, which shall give it due publicity
- **Article 9, 11 and 18** – Parties are requested to exchange information with regard, port entry denials, port use denials and inspection reports, respectively.
- **Article 16** – a system should be created to allow for direct electronic exchange of information, relevant to the Agreement

The PSMA Application

In the first phase of implementation, the PSMA Application was developed to allow the submission and publication of designated ports and national contact points under the PSMA.

One of the data fields of the designated ports form is the UN/LOCODE

The screenshot displays the 'Registration Of Designated Ports (Article 7)' form within the FAO Member States Selection interface. The form is titled 'Registration Of Designated Ports (Article 7)' and includes a record ID of 862 and a creation date of 2019-12-17. The form fields are as follows:

- COUNTRY ***: Australia
- PORT LOCATION ***: Darwin
- PORT NAME ***: Darwin Port
- LOCAL PORT NAME (IF DIFFERENT FROM ABOVE)**: (Empty)
- PORT MAIN AUTHORITY**: Darwin Port - Landbridge
- ADDRESS**: Administration Building, 11 Export Drive Berrimah Northern Territory, 0828 Australia
- PHONE**: 61+61 (8) 8919 0821
- FAX**: 61-
- PORT WEB SITE**: https://www.darwinport.com.au/
- ADVANCE REQUEST FOR PORT ENTRY (ART. 8)**: 7 days, 0 hours, 0 minutes.
- LATITUDE**: (Empty)
- LONGITUDE**: (Empty)
- UN/LOCODE**: AUDRW (highlighted with a red arrow)
- NOTES**: (Empty)

The form also includes a 'MANDATORY FIELDS' indicator and an 'OK' button. The left sidebar shows a list of countries for selection, with 'Australia' highlighted.

Article 7: Designation of ports

Each Party shall designate and publicize the ports to which vessels may request entry pursuant to this Agreement. Each Party shall provide a list of its designated ports to FAO, which shall give it due publicity.

The GIES

The PSMA Global Information Exchange System (GIES) developed by FAO as a toll for Parties to exchange information under the Agreement (articles 9, 15 and 16)

Currently the system allows Parties to exchange:

- Port entry or use denial reports
- Port inspection reports (Annex C)

In the **future**, the system could be used for:

- Advanced requests for entry into port (Annex A)
- Any other reports requested by Parties

- ✓ Port data fields are used in both reports, these use the port name
- ✓ Users are suggested ports to select from the list of designated ports submitted through the PSMA application
- ✓ Correct identification of port is important as these reports are sent to multiple States using various languages

	PSMA Designated ports (27/09/2023)
Total	628
Unique	621

TWG-IE3 recommendations and relevant next steps in development of GIES

During the third meeting of the PSMA Technical Working Group on Information Exchange, in December 2022, the Working Group:

'highlighted the importance of ensuring that all designated ports under the PSMA, have been attributed UN/LOCODE, when possible'

Next steps in the GIES development:

- FAO currently in the planning stages of re-developing the PSMA application and integrating its functionalities into the GIES
 - An opportunity to look at ways to facilitate user input of the UN/LOCODE for ports that they are designating under the PSMA and ensuring that the GIES can suggest an updated list of UN/LOCODEs
- Engage with Parties on the benefits of using UN/LOCODE as a data field within reports to ensure correct identification of ports when exchanging information

Global Information Exchange

National information systems (FS)



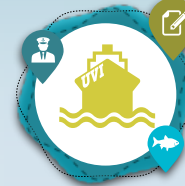
Manual / Direct Input (FS)



Regional vessel records



FAO Global Record



Data / information access for GR (public)

IHSMT

Crosscheck information



Summary compliance information



National information systems (PS)



Manual / Direct Input (PS)



Regional e-PSM Systems



PSMA Global Information Exchange System (GIES)



NCPs

DPs

Data / information access for GIES (restrictions to be defined)

Flag State



Other relevant entities



Thank You



any questions?