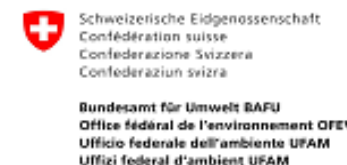




Biodiversity and wetland conservation, transboundary cooperation and Climate Change Adaptation in the Danube River Basin

Birgit Vogel
ICPDR Executive Secretary

ICPDR IKSD



Cooperation Development in the Danube River Basin

Danube River Protection Convention

- Signed 29 June 1994, Sofia (Bulgaria);
- Entering into force in October 1998;
- Establishment of ICPDR Expert Groups;
- 1999 ICPDR Secretariat in place;
- High diversity of ICPDR CPs: 9 EU MS / 5 Non EU MS;
- Sofia Declaration signed in 2000 - Non EU MS implement EU WFD/FD as far as possible.



Protection of water & ecological resources



Sustainable & equitable use of water

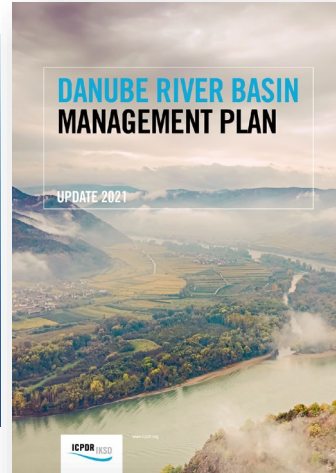


Reduce nutrients & hazardous substances



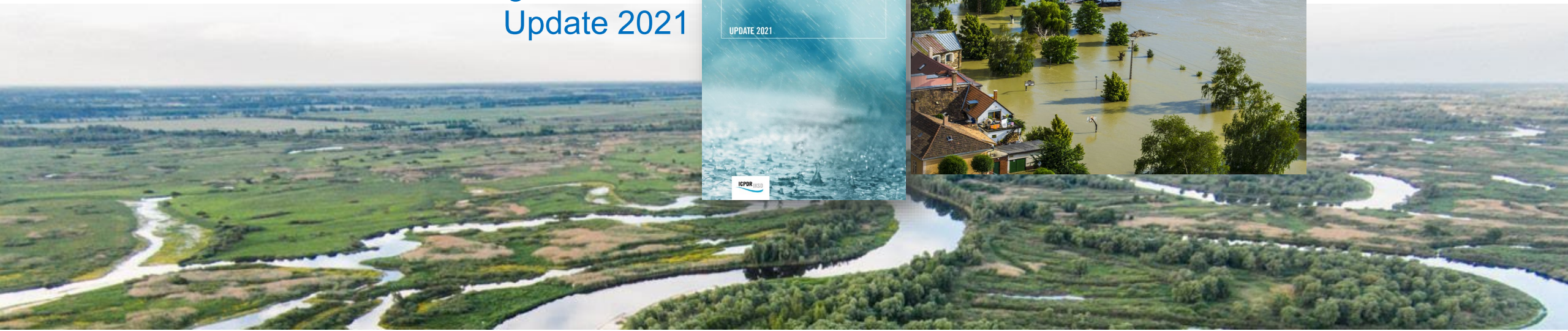
Manage floods & ice hazards

Transforming National RBM Plans into Basin-Wide Ones



Danube River Basin
Management Plan
Update 2021

Danube Flood Risk
Management Plan
Update 2021



Danube RBM Plan / Significant Water Management Issues



Organic
Pollution



Nutrient
Pollution



Hazardous
Substances
Pollution

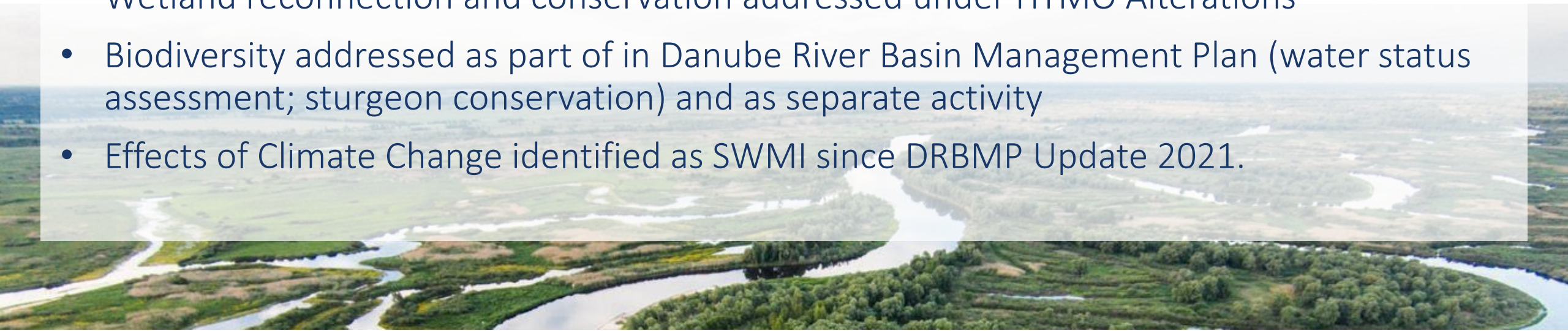


Hydromorphological
Alterations



Effects of Climate
Change (drought,
water scarcity,
extreme hydrological
phenomena and other
impacts)

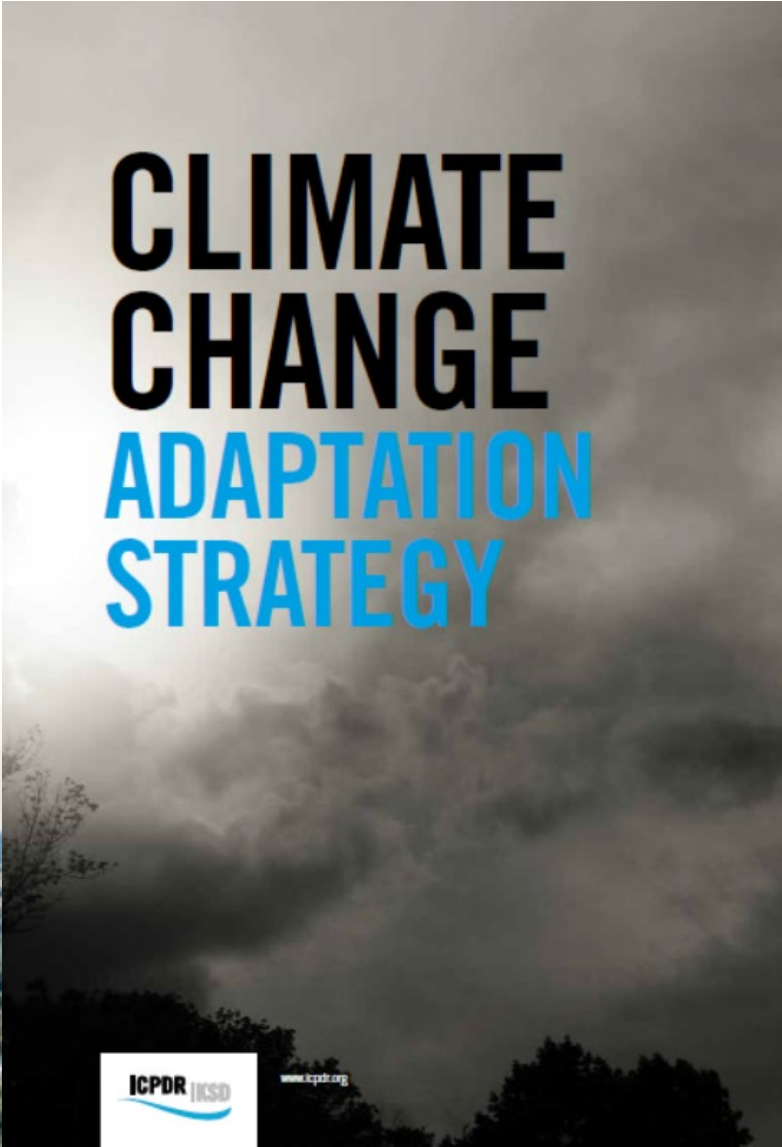
- Wetland reconnection and conservation addressed under HYMO Alterations
- Biodiversity addressed as part of in Danube River Basin Management Plan (water status assessment; sturgeon conservation) and as separate activity
- Effects of Climate Change identified as SWMI since DRBMP Update 2021.



Transforming Climate Change Effects into Water Resilience

ICPDR as leading and pioneering RBO regarding CC adaptation:

- Guides how to integrate CC adaptation into overall ICPDR planning & management processes
- Supports action in transboundary context: Tool-box of measures
- Influences and feeds into national strategies and actions



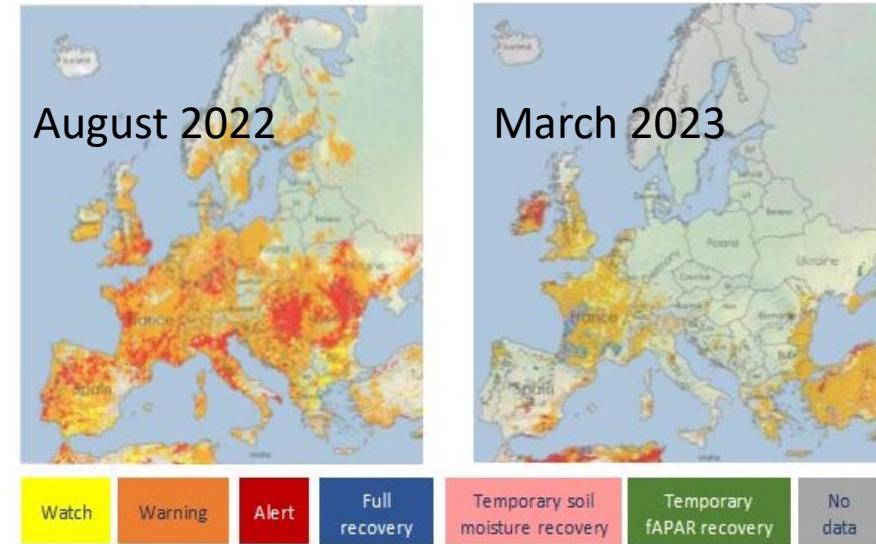
CLIMATE CHANGE ADAPTATION STRATEGY

ICPDR | IKS

www.icpdr.org

Droughts and Low Water Levels in the DRB

- No targeted activities so far to assess and manage droughts and low water level situations at the basin-wide level;
- Severe drought events with significant impacts observed in the last decade and recently, **affecting ecosystems, biodiversity and water uses**;
- Alert and warning conditions across the basin (summer 2022) and in RO and BG (winter 2022);
- Internal ICPDR Workshop on Drought and Low Water Levels to be organized in Belgrade on 16 June 2023
- Main goals of the workshop:
 - Understand and identify DRB transboundary needs regarding droughts and low water levels
 - Put forward possible actions on the basin-wide level



Wetland Conservation and Restoration

- The ICPDR's basin-wide vision is that floodplains/wetlands all over the DRB are re-connected and restored.
 - Integrated function of these riverine systems contributes to the development of self-sustaining aquatic populations, flood protection, climate change adaptation and reduction of pollution in the DRBD (DRBMP 2021).
- **Flood Risk Management Plans and related activities** are significantly contributing to the compilation of inventories of connected and disconnected wetlands/floodplains and therefore increase the knowledge on reconnection potential.

Achievements since 2009:

- More than 60,000 ha of wetlands/floodplains partly or totally reconnected
- For additional 4,500 ha the construction of reconnection is still ongoing.



Biodiversity Assessment

The current assessment of the available data on biological quality elements includes:

Preparation of an Aquatic Biodiversity Report underway

- WFD- based and focus on aquatic biodiversity
- Assessments within Joint Danube Surveys
- Significant activities to protect and conserve Sturgeons in the DRB

Consideration of methods for data collection (including sampling strategies) to ensure comparable data on taxa richness for all biological quality elements, in spatial and temporal extent.

Incorporating biodiversity parameters into the integrated ICPDR Water Quality Database.

Selection and use of proper biodiversity parameters for assessment of biodiversity changes in space and time.



Thank you



Email address: secretariat@icpdr.org



Website: www.icpdr.org



Twitter: https://twitter.com/ICPDR_ORG



Facebook: <https://www.facebook.com/icpdrorg>



Instagram: https://www.instagram.com/icpdr_org/



YouTube: <https://www.youtube.com/user/icpdr>



LinkedIn: <https://www.linkedin.com/company/icpdr-international-commission-for-the-protection-of-the-danube-river/>

