



# Urban Forestry

## An Integrative Nature-Based Solution

*Presented by*  
Liliana Annovazzi-Jakab | Chief  
UNECE/FAO Forestry and Timber Section

*Date:*  
December 12, 2022







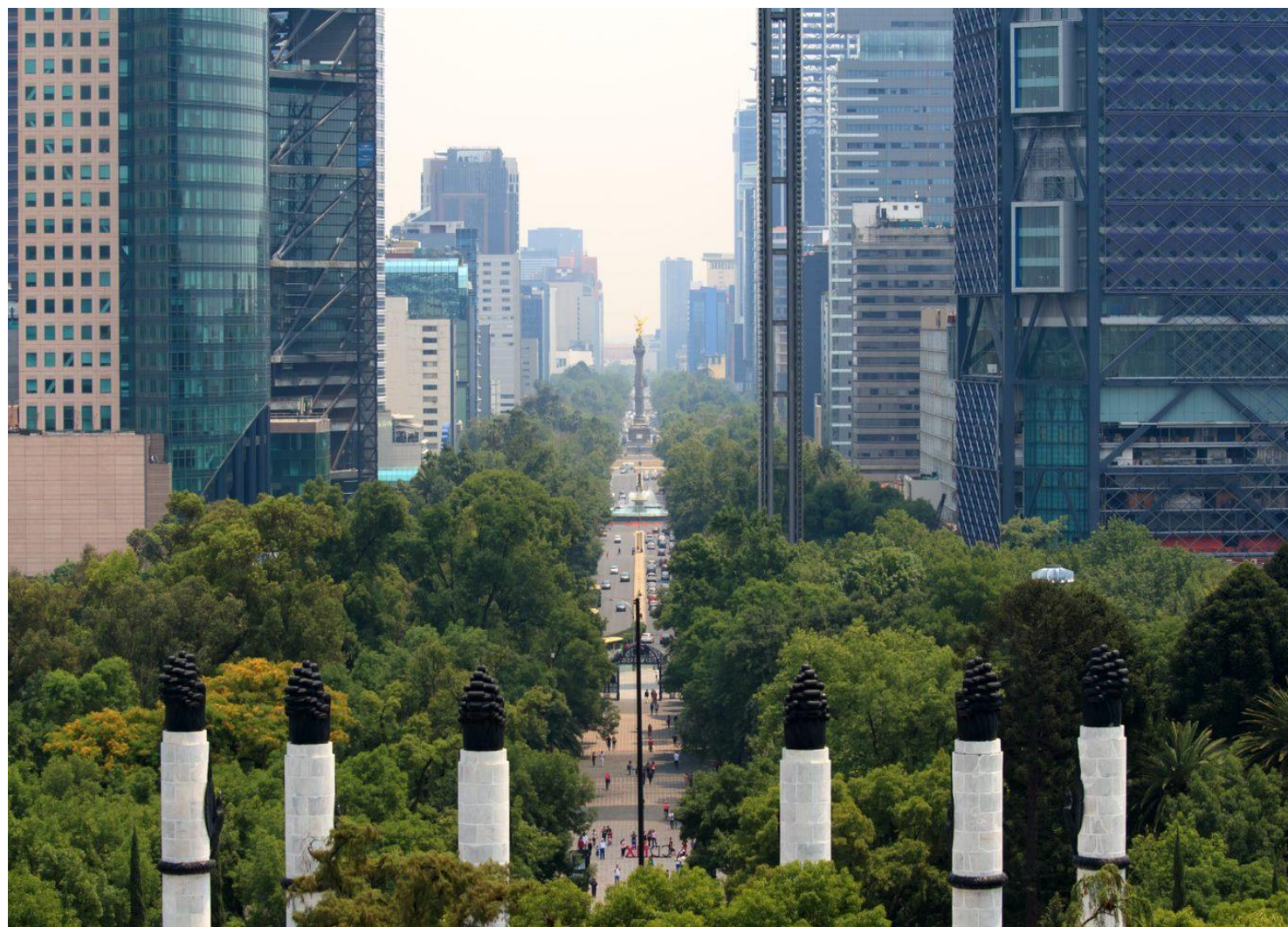
Trees in Cities  
Challenge

# Sustainable Urban and Peri-urban Forestry in the UNECE Region



The UNECE region is home to 42% of global forests.

Yet it is also highly urbanized, with over 75% of the population in Europe and 80% in North America living in urban areas.



With increasing urbanization, cities everywhere and in the UNECE region face many challenges:

- Climate change impacts (heat, floods, landslides)
- Mental and physical health crises
- Air pollution from traffic and industry
- Loss and fragmentation of urban natural areas

Sustainable Urban and Peri-urban Forestry is an **integrative nature-based solution**

It must a core component of efforts by the forest sector to deliver the post-2020 Global Biodiversity Framework





Trees in Cities  
Challenge

# Urban and Peri-urban Forestry



## What are urban and peri-urban forests?



Simple definition: The “sum of all woody and associated vegetation in and around urban areas.”

## What is urban and peri-urban forestry?

Sustainable urban and peri-urban forestry (SUPF) is the art, science, and practice of **planning, designing, establishing, and managing** urban and peri-urban forests to meet the current needs and desires of society **for the benefits these provide**, while ensuring such benefits for future generations.



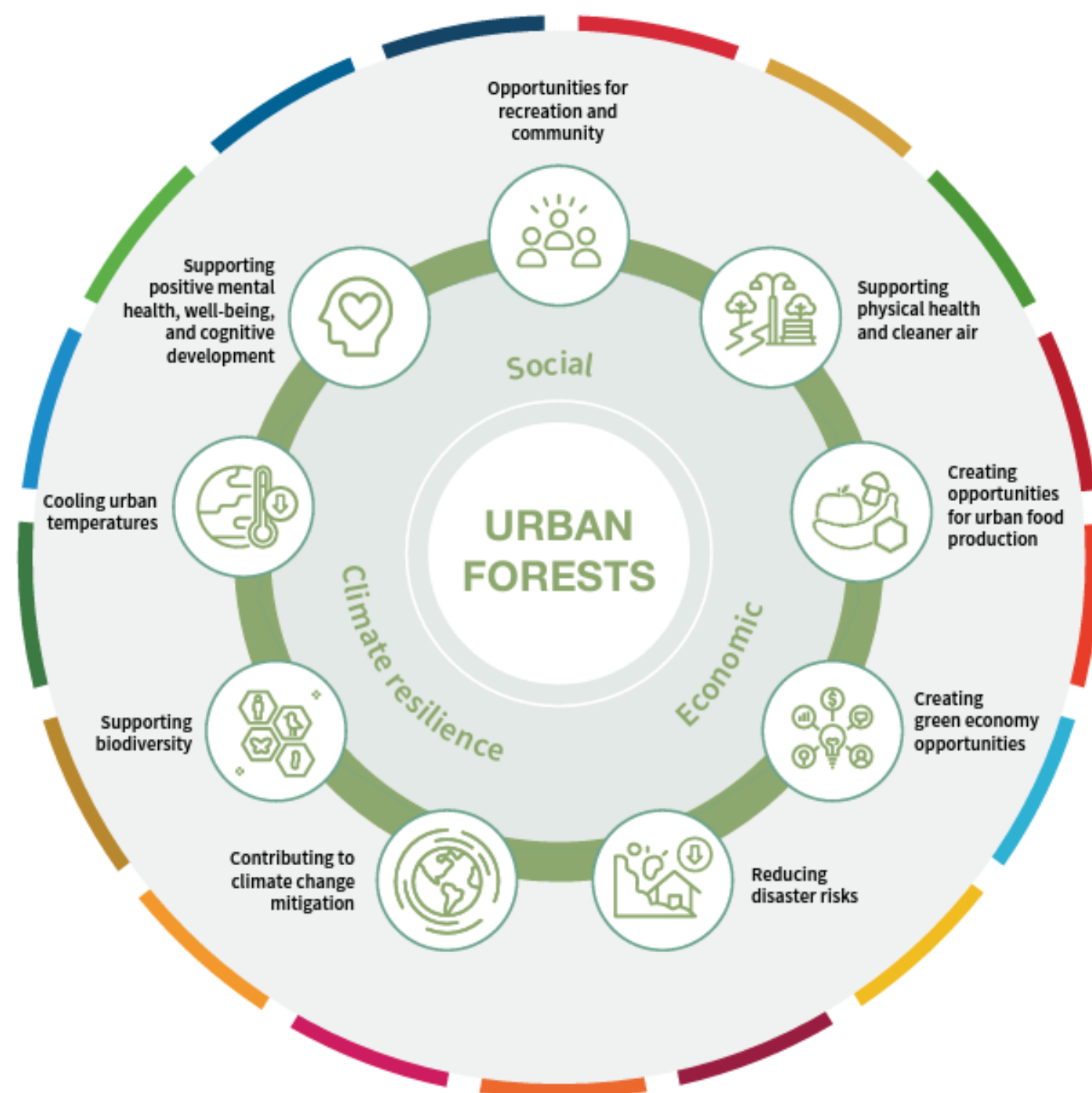


Trees in Cities  
Challenge

# Urban and Peri-urban Forestry



## Why is urban and peri-urban forestry important?



### Urban and peri-urban forestry is a nature-based solution for global challenges

*Sustainably managed urban and peri-urban forests helps localize implementation of the*

- Convention on Biological Diversity
- Sustainable Development Goals
- UNFCCC and its Paris Agreement
- Sendai Framework
- Other National and Global Goals





Trees in Cities  
Challenge

# Advancing Urban and Peri-urban Forestry



## Looking back...

- Over 75 years, UNECE has helped to build a resilient forest sector in Europe
- The UNECE region has experienced decades of net gain in forest area, the only global region with a positive trend

→ Sustainable Forest Management works



**Learning from the past**



**Transforming for the future**



## Looking ahead...

- Need to rebuild our societies to promote nature and climate positive development
- UNECE is committed to support sustainable management and expansion of urban and peri-urban forest cover as a nature-based solution and critical infrastructure





Trees in Cities  
Challenge

# UNECE Trees in Cities Challenge (TICC)



Over 60 cities worldwide  
have pledged to plant  
13 million trees

A TICC pledge can help to:

- Mobilize finance & other support
- Build community support & engagement
- Engage & exchange with other cities



Economy



Biodiversity



Health &  
well-being



Mitigation,  
Adaptation  
& DRR

With cities on the front line of the SDGs & Climate Action  
**Sustainable Urban and Peri Urban Forestry...**

*...is a cost-effective, nature-based solution to  
localize biodiversity conservation, climate  
action, and the SDGs*

- Reduce infrastructure cost with green solutions
- Mitigate urban heat island effect & heat-related deaths
- Reduce energy consumption & expenditure
- Increase pedestrian traffic (commercial, tourist and cultural)
- Reduce flood & landslide risks
- Improve physical and mental health
- Grow food in urban areas
- Create green jobs





Trees in Cities  
Challenge

# Delivering Urban Forestry



## Long-term Planning

- Benefits depend on right tree in right place
- Dedicated plans are needed that consider linkages
- As is integration into broader city planning
- Include community & other stakeholders

## Ongoing Monitoring

- Do planted trees survive?
- Are expected benefits are obtained?

## Long-Term Management and Maintenance

- Existing trees and forest are a valuable public asset
- They must survive and thrive over time
- Healthy mature trees provide the greatest benefit

## Adequate Investment

- Need predictable finance and resources over time
- Realistic budget allocation is critical to achieve outcomes





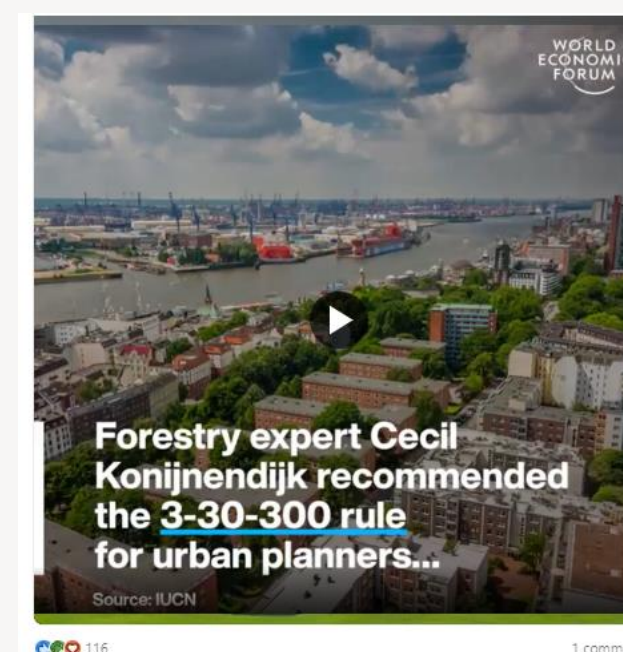
Trees in Cities  
Challenge

# Inclusive Sustainable Urban & Peri-Urban Forestry



## The 3-30-300 rule for greener, healthier, and more resilient cities

- 3 Everyone should be able to see at least 3 mature trees from their home and place of work or study;
- 30 There should be a 30% tree canopy cover in each neighbourhood
- 300 The maximum distance to the nearest high-quality public green space should be 300 metres.







Trees in Cities  
Challenge

# Make a Trees in Cities pledge today!



First, define your pledge:

- *Sustainable Urban Forestry Measures*
- *Sustainable Urban Forestry Targets*
- *Tree planting targets*

Then submit a pledge letter to UNECE  
Executive Secretary Ms. Olga Algayerova

Implement, Monitor and Share Progress

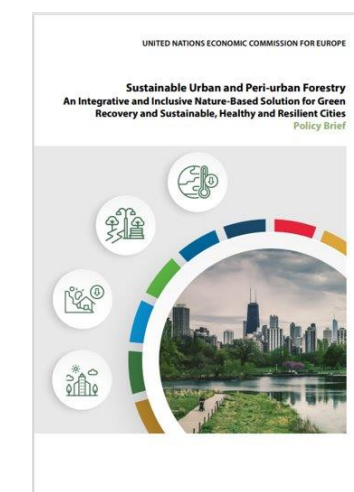
A pledge letter template is available at:  
<https://bit.ly/3BfsGxq> (or scan the QR code)



Download our **Policy Brief on Sustainable Urban and Peri-urban Forestry**



Download our **Draft Regional Urban Forestry Opportunity Plan**







Trees in Cities  
Challenge

# Thank you, and...



...let's work together to grow what works!

Register for the  
Benchmarking Survey



Scan QR code or visit  
<https://forms.office.com/e/CDk0YAZf42>

Make a Trees in  
Cities Pledge Today!



Scan QR code or visit  
<https://treesincities.unece.org>

Join the Informal  
Network of Experts



Scan QR code or visit  
<https://forms.office.com/r/M2gFtdgbju>

