



Photo credit: iStock

Working Party on Rail Transport
76th session



UNECE

Agenda item 7

Group of Experts on International Railway
Passenger Hubs

Francesco Dionori

Secretary, Working Party on Rail Transport (SC.2)

17 | 11 | 2022

Group of Experts on International Railway Passenger Hubs Background



- The development of international passenger rail transport in the context of ITC resolution No. 264
- Activities started in 2021, continued in 2022. Current mandate to finish in 2023.
- Objective: To facilitate the growth of international passenger transport by rail by offering passengers stations (hubs) with harmonized high-level parameters and services that can be recognized when arriving at, and departing from, cities



Main areas of work (1)



- The Group of Experts will focus its work on the following issues:
 - A. Identify the technical and service parameters necessary for the definition of an “International railway passenger hub or hubs”;
 - B. Identify which stations on the European Agreement on Main International Railway Lines (AGC) network should be defined as an “International railway passenger hub” and its type as appropriate;
 - C. Identify what legal instrument or tool should be used to define and implement these “International railway passenger hubs” and draft the necessary legal provisions;

Main areas of work (2)



- D. Analyse the legal framework governing international passenger transportation in order to identify restrictions hindering the development of international passenger transport by rail in East – West traffic and prepare recommendations for its improvement;
- E. Prepare a document on measures to support international rail carriers in the context of the crisis caused by the pandemic of the new coronavirus infection COVID-19;
- F. Propose a way forward in the form of a report to the Working Party on Rail Transport for consideration.

(A, B) Identification of stations

Where we stand



- Definition of an “International railway passenger hub”:

“An International Railway Passenger Hub is a rail station that provides passengers connections to multiple international and national rail services, to other Hubs and to the services delivered by other modes. International railway passenger hubs can be “Primary” or “Secondary” as defined by member States and depending on the level of service offered.

The technical and service parameters that member States are to work towards providing in “Primary” and “Secondary” International Railway Passenger Hubs are identified in Annex X of...”

- Identification of stations on the AGC to be selected as hubs

(<https://unece.org/sites/default/files/2022-07/ECE-TRANS-SC.2-HUBS-2022-08e.pdf>)

(A) Technical and Service parameters

Current progress



- What is needed?

“Provide departing and arriving passengers with an environment that facilitates accessibility to the railways for international travel.”

- How can this be done?

Identifying key station attributes that make the use of stations.

- Current proposals set out here:

<https://unece.org/sites/default/files/2022-06/ECE-TRANS-SC.2-HUBS-2022-09e%20%282%29.pdf>

- Consultation concluded at the end of October.



(C) Identify legal instrument or tool

Significant progress made



- The Group agreed that the best way forward is to modify the AGC
- Draft proposals for modifications included in:

<https://unece.org/sites/default/files/2022-06/ECE-TRANS-SC.2-HUBS-2022-10e.pdf>

- Comments received on potential modifications.
- Proposals will then need to be made by a Contracting Party to the AGC.



Photo credit: Depositphotos

(D) Analysis of the legal framework

Complete



- Analysis of the legal framework
 - The Group noted the work done by OSJD in this area and agreed that no further analysis was needed. Their analysis is available in three languages on our website: <https://unece.org/sites/default/files/2022-07/ECE-TRANS-SC.2-HUBS-2021-07e.pdf>

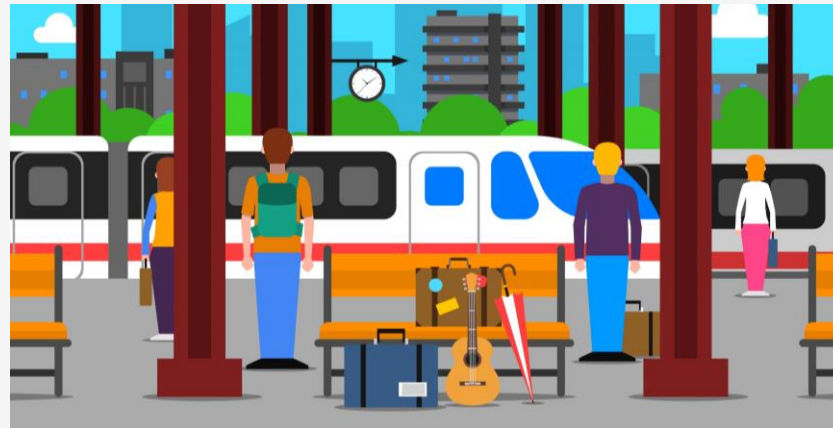


Photo credit: Depositphotos

(E) Document on support to international rail carriers

Complete



- A publication has been prepared on support to international rail carriers in the context of the pandemic:

“Railways at the centre of a post-pandemic recovery: Measures to support international rail carriers”





Thank you

Next meeting: 19-21 April 2023 in
Geneva

Working Party on Rail Transport
76th session



Francesco Dionori

Secretary, Working Party on Rail Transport (SC.2)

Francesco.dionori@un.org