



# #Housing2030

## Project Update

C. Kat Grimsley, PhD

# Document Drafting Team



DR. JULIE LAWSON

Project Lead



DR. HOLGER WALLBAUM



DR. KAT GRIMSLEY



DR. SERGIO NASARRE-AZNAR



DR. NÚRIA LAMBEA LLOP



DR. MICHELLE NORRIS



AFFORDABLE HOUSING: TIME TO THINK AND DO DIFFERENTLY

# Background to #Housing2030 initiative



An initiative of



proudly supported by



An Gníomhaireacht Tithíochta  
The Housing Agency

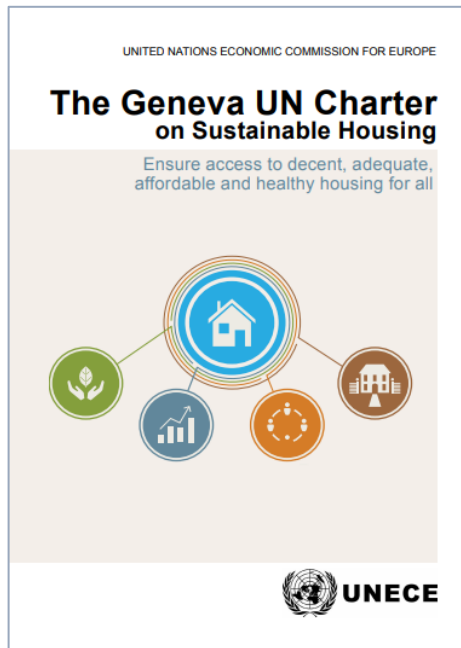


AFFORDABLE HOUSING: TIME TO THINK AND DO DIFFERENTLY



# Background to #Housing2030 initiative

The project builds on the principles of the Geneva UN Charter on Sustainable Housing:



1. Social inclusion and participation
2. Economic effectiveness
3. Environmental protection
4. Cultural adequacy



AFFORDABLE HOUSING: TIME TO THINK AND DO DIFFERENTLY

# What is the focus?

## Policy tools and good illustrations – *not universal blue prints*

### Four key chapters:

1. **Governance** of housing policies and institutions
2. Access and **availability of land** for affordable housing
3. **Finance and funding** to invest in affordable housing
4. **Climate-neutral** housing that is affordable and inclusive



AFFORDABLE HOUSING: TIME TO THINK AND DO DIFFERENTLY

# Governance

## What kind of tools will be outlined and illustrated?

- Strategic frameworks
- Leadership and commitment
- Market shaping institutions
- Building the capacity to deliver
- Multi-level governance and partnership
- Governing with insight - policies for change
- Housing Standards Setting and Monitoring
- Accountability and enforcement structures
- Providers for the common good
- Households governing their own housing



# Land Policy



## What kind of tools will be outlined and illustrated?

- Public land banking and purposeful development
- Public land leasing and conditional use
- Land re-adjustment guiding effective redevelopment
- Land value recapture reinvesting with purpose
- Planning for affordable, inclusive housing
- Neighbourhood planning

# Finance and Funding

## What kind of tools will be outlined and illustrated?

- Regulations affecting operation of financial institutions and their investment in housing
- Public investment: Capital investment & operating subsidies
- Special purpose financial intermediaries
- Long term financial instruments for affordable housing
- Interest rate subsidies, guarantees and insurance
- Rent setting, indexing and rent/revenue assistance
- Not for profit business models:
- Tax provisions influencing housing investment





# Climate-neutral housing



## What kind of tools will be outlined and illustrated?

- Regulation
- Non-regulatory policy initiatives
- Standards
- Financial incentives
- Awareness raising and training

# Milestones

**Website:** Housing2030.org was launched in May 2020; interactive and continually updated

**Podcast series:** “Making a House a Home: Housing2030 special series”

**Final Report:** adopted at the UNECE Ministerial meeting in Oct 2021

**Conferences and Online workshops:** Robust and ongoing agenda of events, 2020 – 2022

# Events



## 2022

June 2022: “Finance and investment mechanisms for affordable and inclusive housing” Kyiv-based NGO, CEDOS

June 2022: Participation in the International Social Housing Festival, Helsinki

April 2022: “Housing2030, effective policies for affordable housing in the UNECE region” Forum of Mayors

## 2021

Nov. 2021: “The #Housing2030 initiative in Europe” host Barcelona City Council’s Housing and Renovation Forum

April 2021: “Housing affordability through access to finance and funding” host The Housing Agency, Ireland

Feb. 2021: “Good governance and regulation for affordable housing” host Republic of Slovenia

## 2020

November 2020: “Climate change, environmental and health impacts on housing affordability” City of Glasgow

May 2020: “Land for inclusive and affordable housing” hosted by UN ECE, Housing Europe, UN Habitat

A small circular logo with the text "UNECE" next to it, positioned at the start of a horizontal line of colorful dashes that spans across the top of the slide.

Questions?

C. Kat Grimsley, PhD

[cgrims@gmu.edu](mailto:cgrims@gmu.edu)