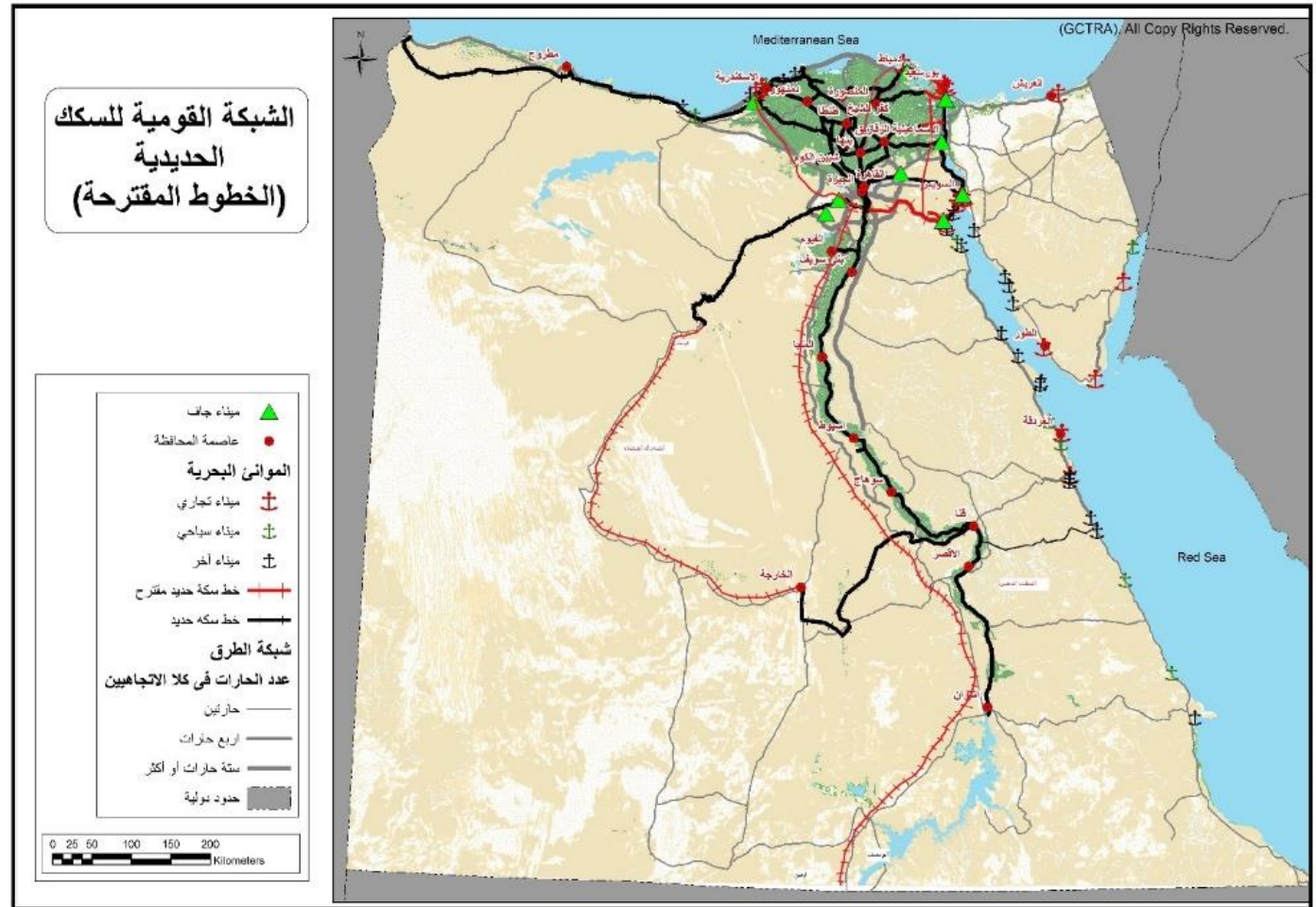
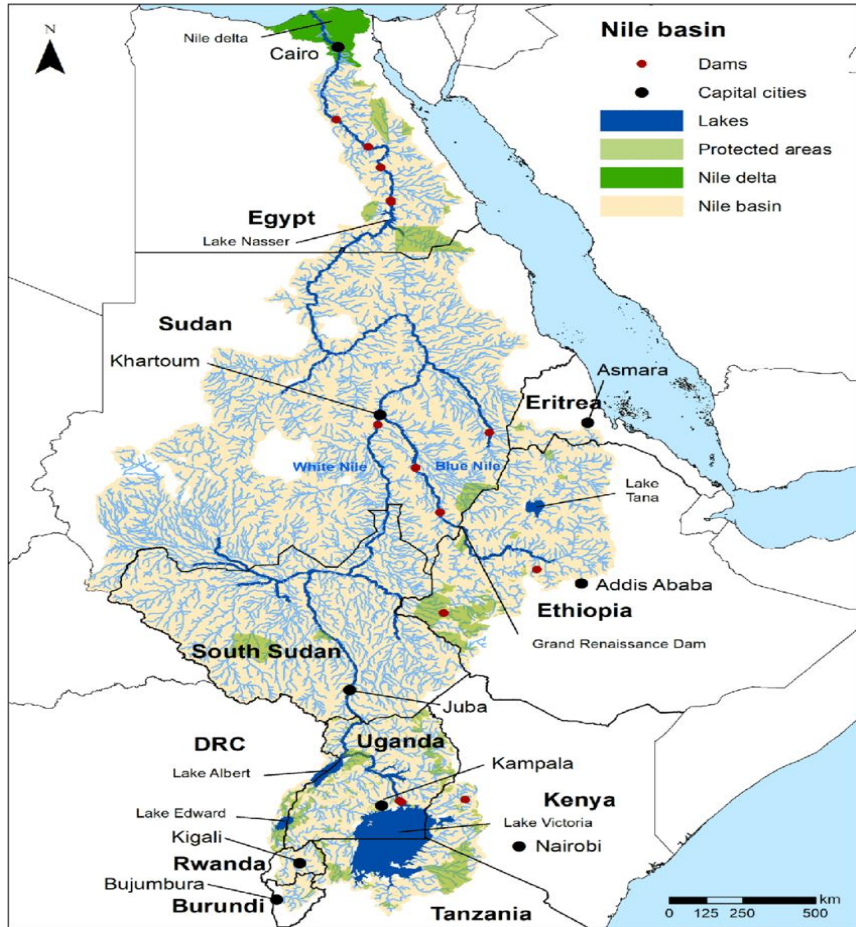


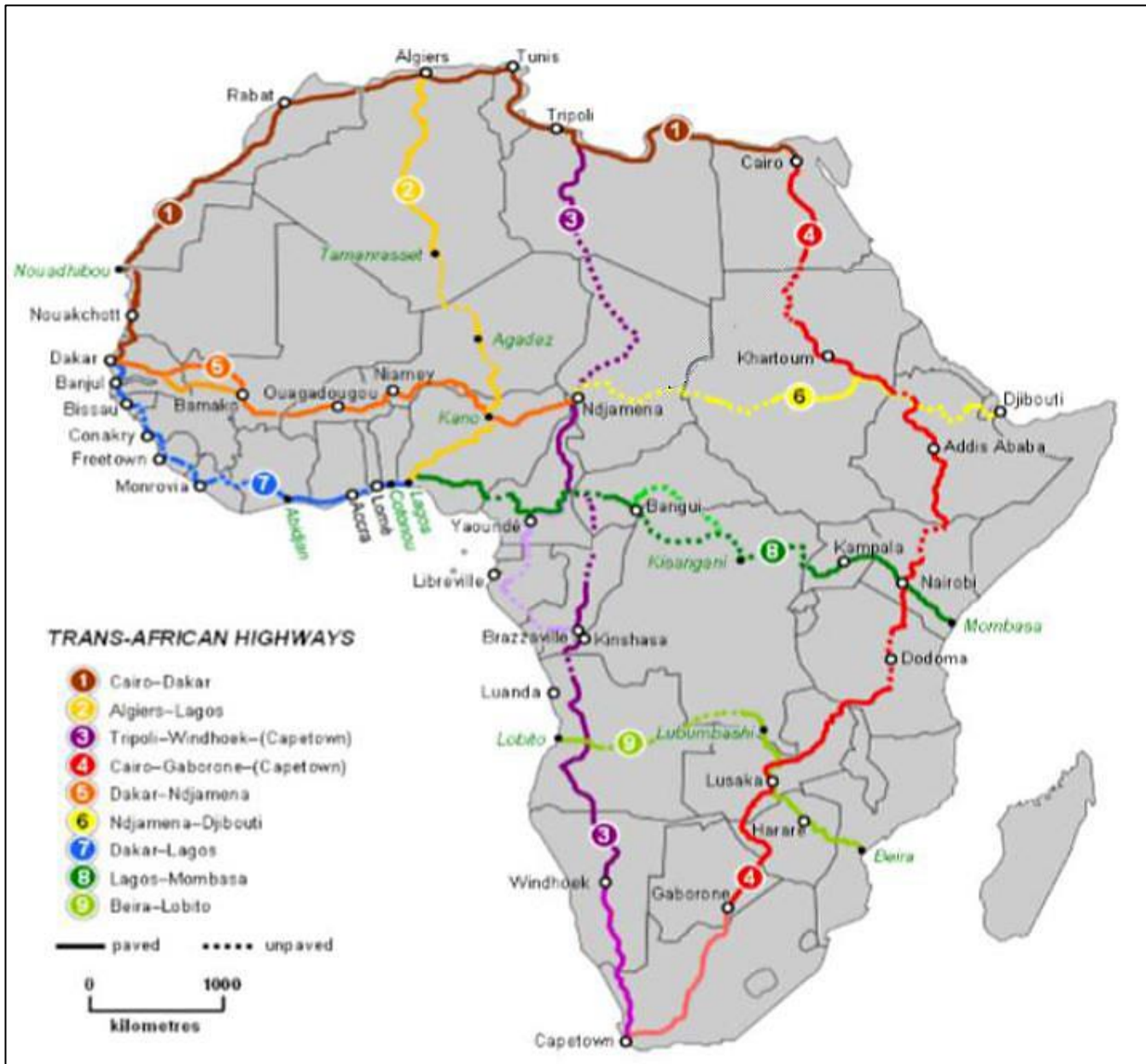


Importance of Egypt Geography for the or the World Trade

- **Introduction about Egypt Geographic Location :**
- **Upgrading main Roads network and connecting our neighbors countries**
- **New project to enhance our connections with Europe and Asia**
- **Construction and Development Maritime ports**
- **Egypt plan to join international Agreements and bilateral agreements**
- **Egypt needs to join the international Land transportation**



Egypt location is considering a unique location because it is a COMPERHENSIVE Integrated hub linking world trade for Africa ,Asia and Europe through several axes such as Suez Canal ,Railway, inland waterway and land port



Axis linking EGYPT with African countries

TAH1:Cairo – Dakar

TAH4:Cairo – Cape town

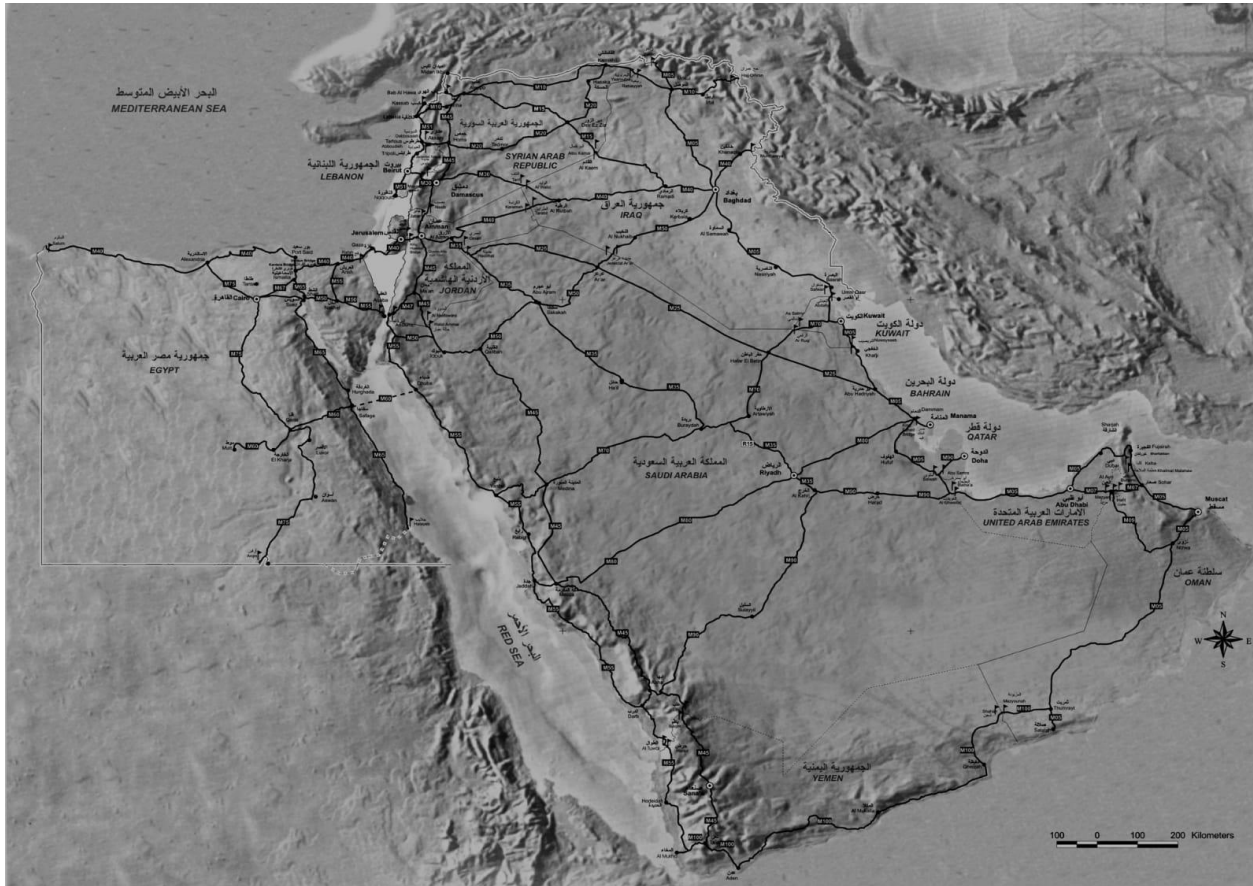
The Cairo-Cape Town project is one of the land link projects between the African countries from north to south under the number TAH4 with a total length of 10,228 km and passes through the following countries according to the attached table:

country	Egypt	Sudan	Ethiopia	Kenya	Tanzania	Zambia	Zimbabwe	Botswana
Length(km)	1,140	1,321	1,692	970	1,130	1,490	539	643

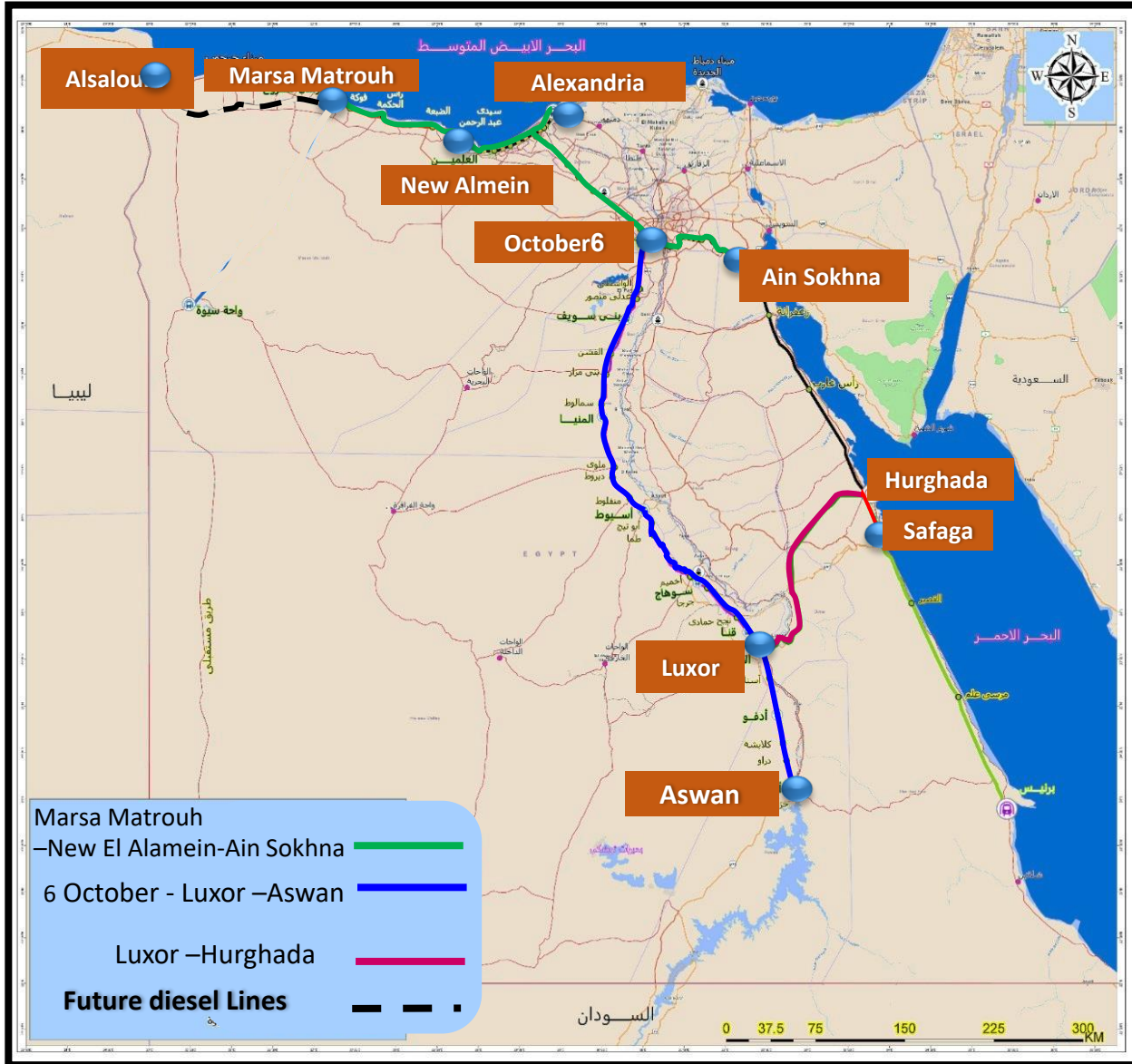
This road can be used in the distance from south of Dongola in Sudan to Juba in Southern Sudan without investing in the entire Cairo-Cape Town axis, When reaching the city of Juba, the rest of the Nile Basin countries can be reached at acceptable distances, which will create many investment projects in the region.



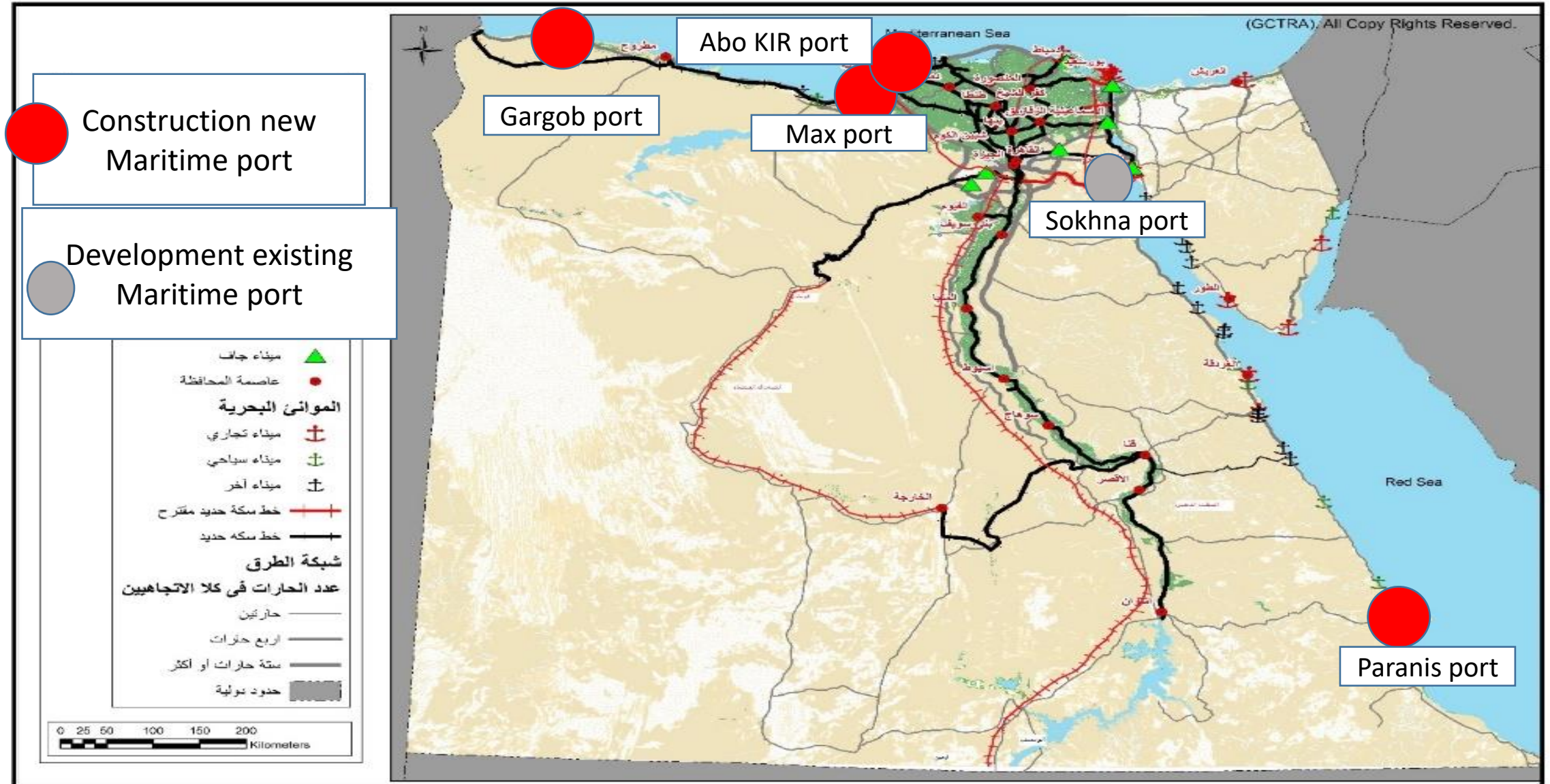
Axes that Connected between Egypt and the Arab countries according to ESCAW :



Road Name	Route in Egypt	Linked Arab Countries
M40	Coastal Road from eastern to western Egyptian border	Gaza- Jordan-Iraq
M55	Arish – Newiba	Jordan – Saudi
M60	Qena – Safaga	Saudi
M65	Port Said – Suez – Hurghada – Haleab	Saudi
M67	Cairo to Mubarak Salam bridge over the Suez Canal	
M75	Alex to Aswan - Arqin	

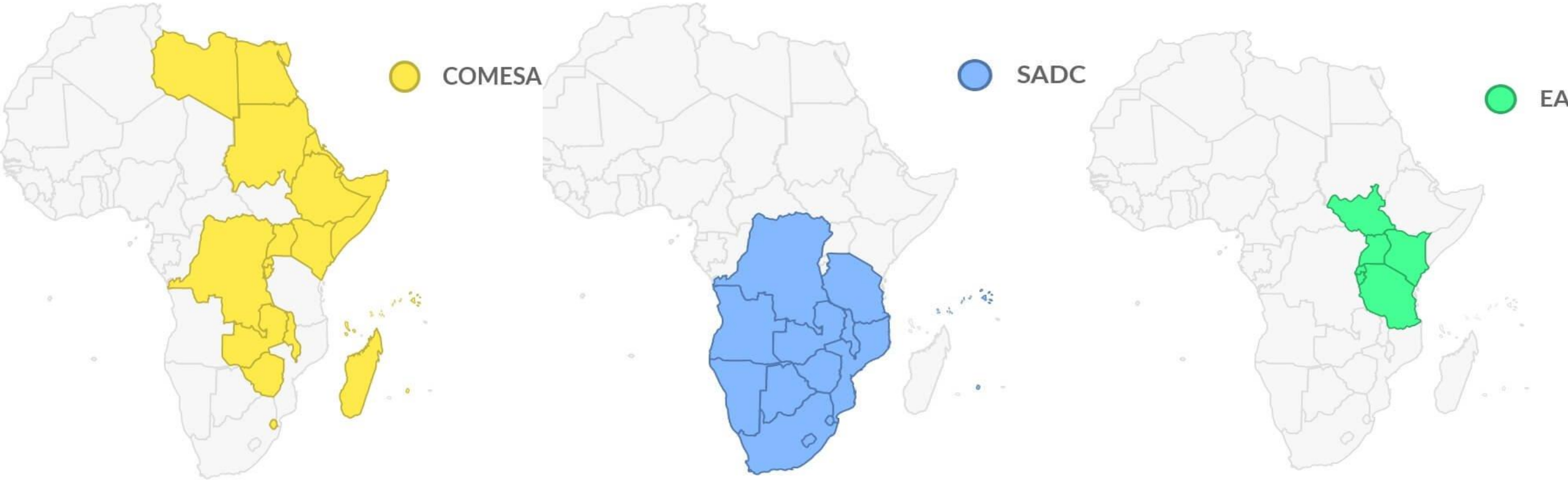


High speed train network		
	Stage	Length
1	Marsa Matrouh –New El Alamein-Ain Sokhna	660
2	6 October - Luxor –Aswan	850
3	Luxor- Kenna- Hurghada Safaga	300
Total length		

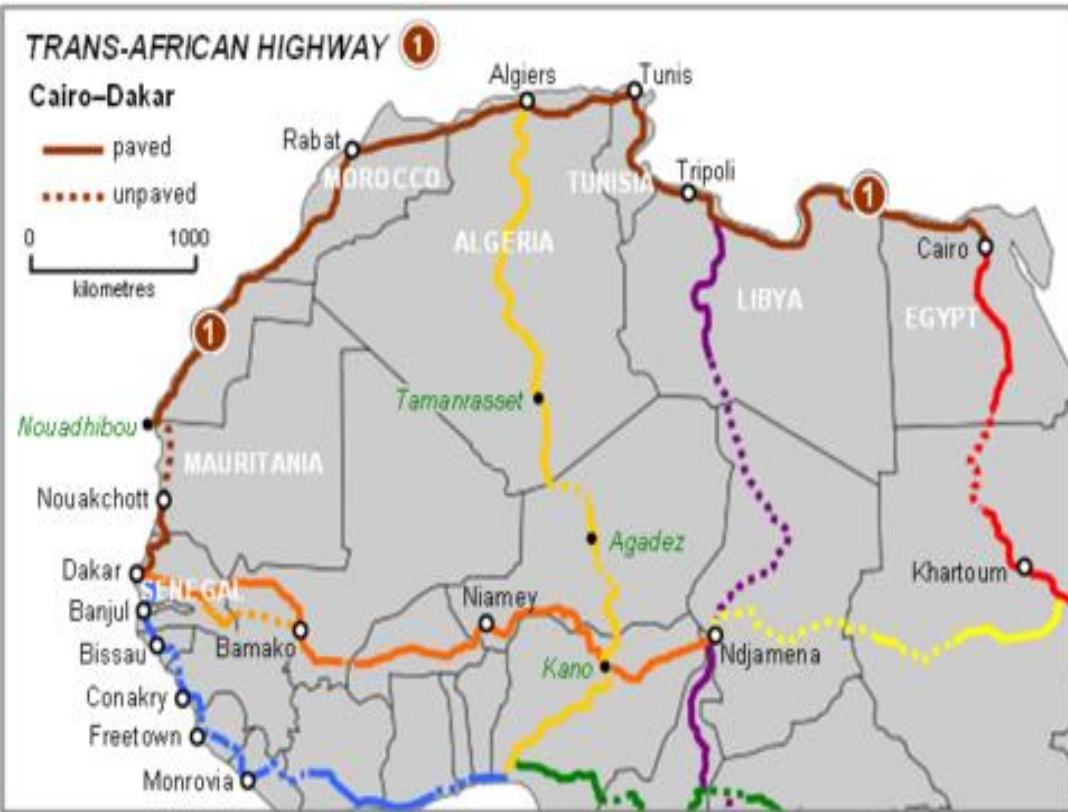


- to highly get a benefit from this site and the unprecedented development in its infrastructure that is currently underway, new horizons are opened for dealing with neighboring countries by joining and preparing to join number of agreements, as follows:
 - The Convention on International Transport of Goods Under Cover of TIR Carnets (TIR)
 - Preparing to access the AETR Agreement.
 - Preparing for accession to the Vienna Two Conventions, which facilitate and ease the transit of trucks,
 - The Dangerous Goods Transport Agreement (ADR).
- Thus to integrate between the ongoing infrastructure development and procedures such as accession to agreements and developing the legislative and regulatory structure that would support land transport with countries in Asia, Africa, Europe, in addition to agreements at the African level.-

جنوب السودان والتجمعات الافريقية



**MULTILATERAL CROSS-BORDER ROAD TRANSPORT AGREEMENT (MCBRTA)
VEHICLE LOAD MANAGEMENT AGREEMENT (VLMA)**



II - The axis linking the Cairo-Dakar road TAH1

- Cairo-Dakar axis TAH1-, that connects the Egyptian borders in the east to Libya in the west and from there to the northwestern countries of Africa (Tunisia - Algeria - Morocco) beside west coast of Africa .
- Enhancing transportation on these axes, there are number of bilateral and multilateral agreements concluded between the Arab Republic of Egypt and the Arab and European countries of the Western Mediterranean, for the operation of RORO lines

- Training our driver according to the international level to help them to penetrate All EU countries
- Adopting our trucks according the international level
- Enhancing and facilitation at border crossing in land and maritime ports
- Developing cargo air transportation
- Increase bilateral agreements with **EU** countries

