



Diretorate-General for Territory (DGT-Portugal) The National Cadastral Information System

**Twelfth Session of the UNECE Working Party on Land
Administration | Switzerland | 31 May - 01 June 2021**

Paulo Torrinha, Head Director of Cadastral Information Department

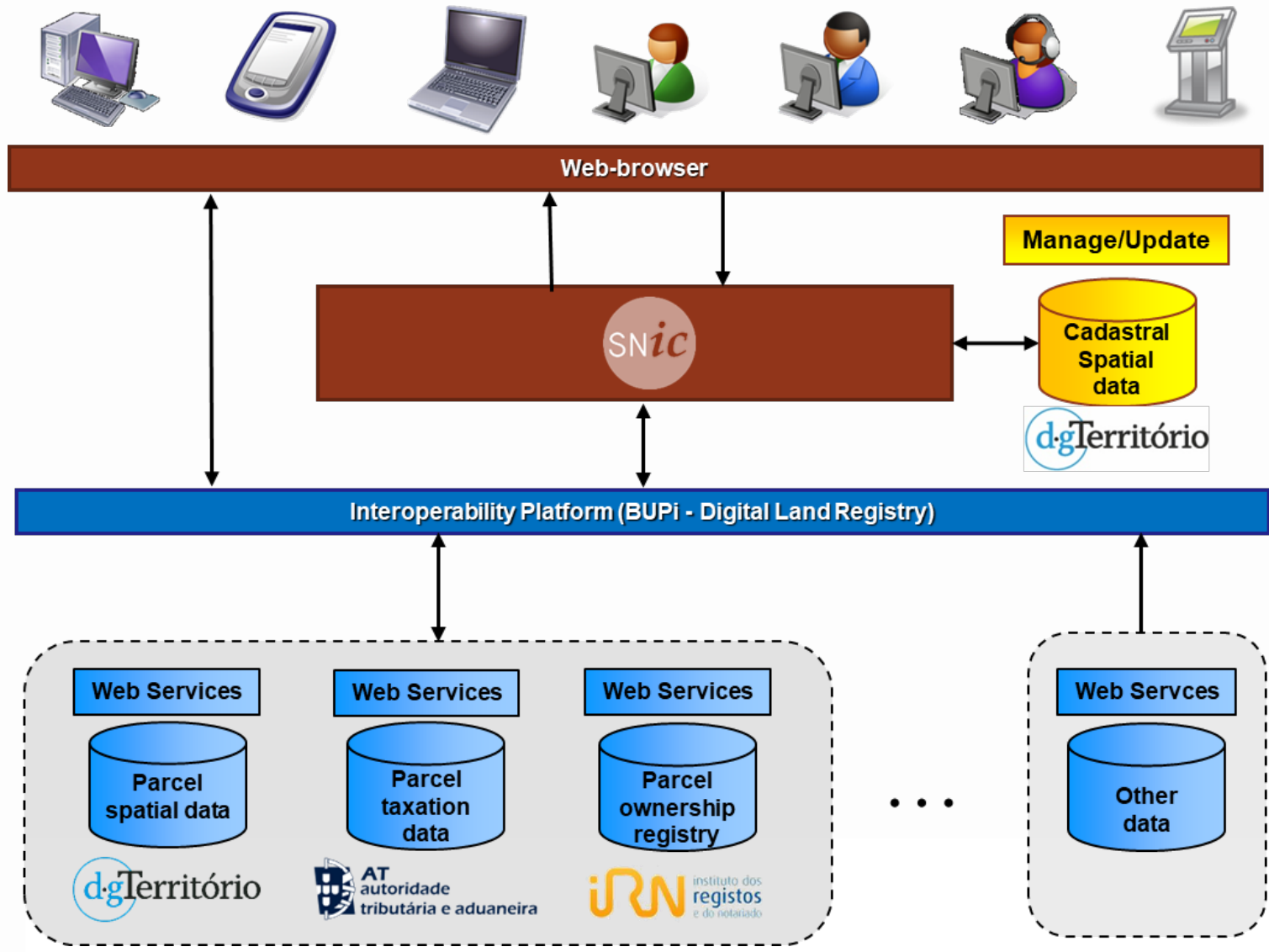
Lisbon

The National Cadastral Information System





What is SNIC





What are we doing

- New framework law (legal regime) of cadastre
- Implement a single cadastre management
- Decentralize cadastral execution and updating cadastral data
- Update and improve cadastre technicians on-line platform





Cadastre technicians platform (TCP Platform)

- Cadastre Technicians Platform is available at DGT web page and it is a way to accessing services for cadastre practice and professional activities
- Citizen can access an updated list of qualified cadastre technicians that can carry out their activity on portuguese mainland territory.



<https://tcp.dgterritorio.gov.pt/>



How we are doing it

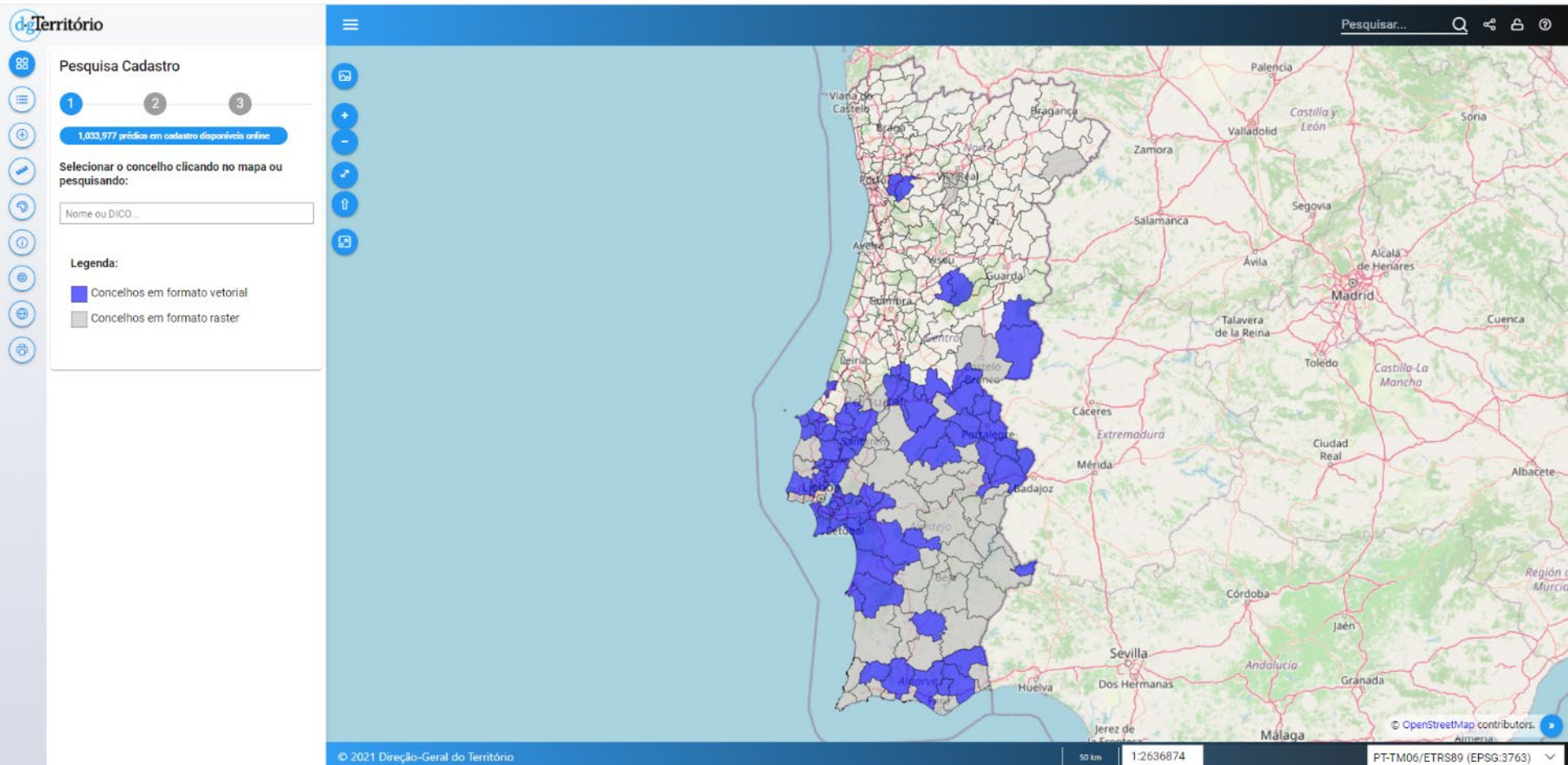
- Based on the experience gained
- Supported by new methodologies of authentication, certification, prior control, stakeholder accountability and implementation of continuous inspection systems
- Rationalizing resources
- Designing and materializing new value-added products and services





What is already done

Cadastral information online viewer



<https://snic.dgterritorio.gov.pt/visualizadorCadastro>



Online cadastre viewer (parcels)

Território

Pesquisa Cadastro

1 2 3

Concelho: LOULÉ
 Código Distrito/Concelho: 0808
 Regime de Cadastro: Predial Experimental
 Área de atuação: Lisboa

Selecionar prédio(s) clicando no mapa ou pesquisando:

Nº Declaração Pesquisar

< Voltar > Pontos

Blue Marble NASA Earth Observatory / © Ortos 2018, DGT - Direção-Geral do Território

© 2021 Direção-Geral do Território

100 m | 1:3329 | 7645.559 -291468.845 | PT-TM06/FTRS89 (FPSG:3763)

More than 1 million cadastral parcels are currently available online



Online cadastre viewer (additional themes)

Within the scope of its attributions and competences, Directorate-General for Territory (DGT) already provides a set of web services with relevant information to be used as a reference for analysis simultaneously with the representation of cadastral parcels

The screenshot shows the 'dgTerritório' interface. On the left is a vertical toolbar with icons for home, menu, zoom in, zoom out, pan, info, location, globe, and print. The main area is titled 'Temas' and contains a search filter 'Filtro...' with a 'Limpar' button. Below the filter is a list of themes, each with a gear icon for settings and a magnifying glass icon for search:

- Official Administrative Portugal Map (CAOP)
- National Agricultural Reserve (RAN)
- Land Use Regime Map (CRUS)
- National Ecological Reserve (REN)
- Land Use and Cover Map (COS)
- Built Areas
- Urban-Rural Interface



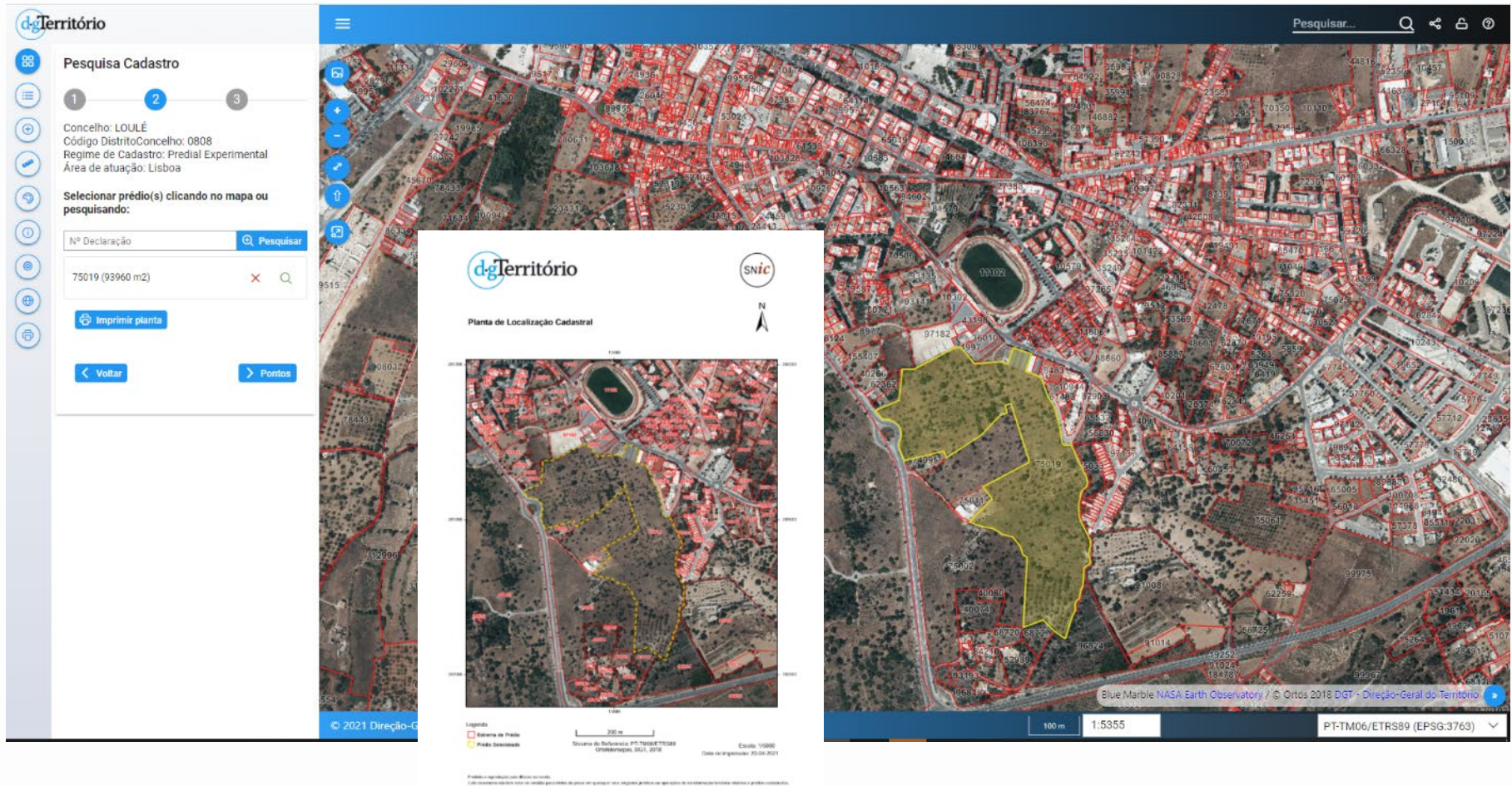
Online cadastre viewer (additional themes)

The screenshot displays the 'dg Território' online cadastral viewer interface. On the left, a sidebar titled 'Temas' (Themes) allows users to filter and toggle various cadastral layers. The 'Filtro...' field is set to 'Limpas'. The selected themes include:

- N° de Prédio
- N° de Secção
- Marco de Propriedade
- Prédio
- Limite de Secção
- Área Social de Folha
- Carta Administrativa de Portugal (CAOP)
- Reserva Agrícola Nacional (RAN)
- Carta do Regime do Uso do Solo (CRUS)
- Solo Não Classificado
- Solo Rústico
- Solo Urbano
- Reserva Ecológica Nacional (REN)
- Carta de Uso e Ocupação do Solo (COS)
- Áreas Edificadas
- Interface Urbano-Rural

The main map area shows an aerial view of a rural landscape with a river and agricultural fields. Red lines delineate property boundaries and parcels, while blue lines indicate section boundaries. The map includes a search bar at the top right with the text 'Pesquisar...', a scale bar at the bottom center showing '100 m' and '1:4191', and a coordinate system dropdown at the bottom right set to 'PT-TM06/ETRS89 (EPSG:3763)'. The footer of the map area contains the text '© 2021 Direção-Geral do Território'.

SNic Online cadastre viewer (other utilities)



This viewer platform has features for localization, inquiry, design, loading user themes, web services and printing, with the possibility of crossing several layers of information such as topographic cartography, land use and cover cartography as well as aerial images



Future actions

Cadastre business model definition



Nation wide
operations

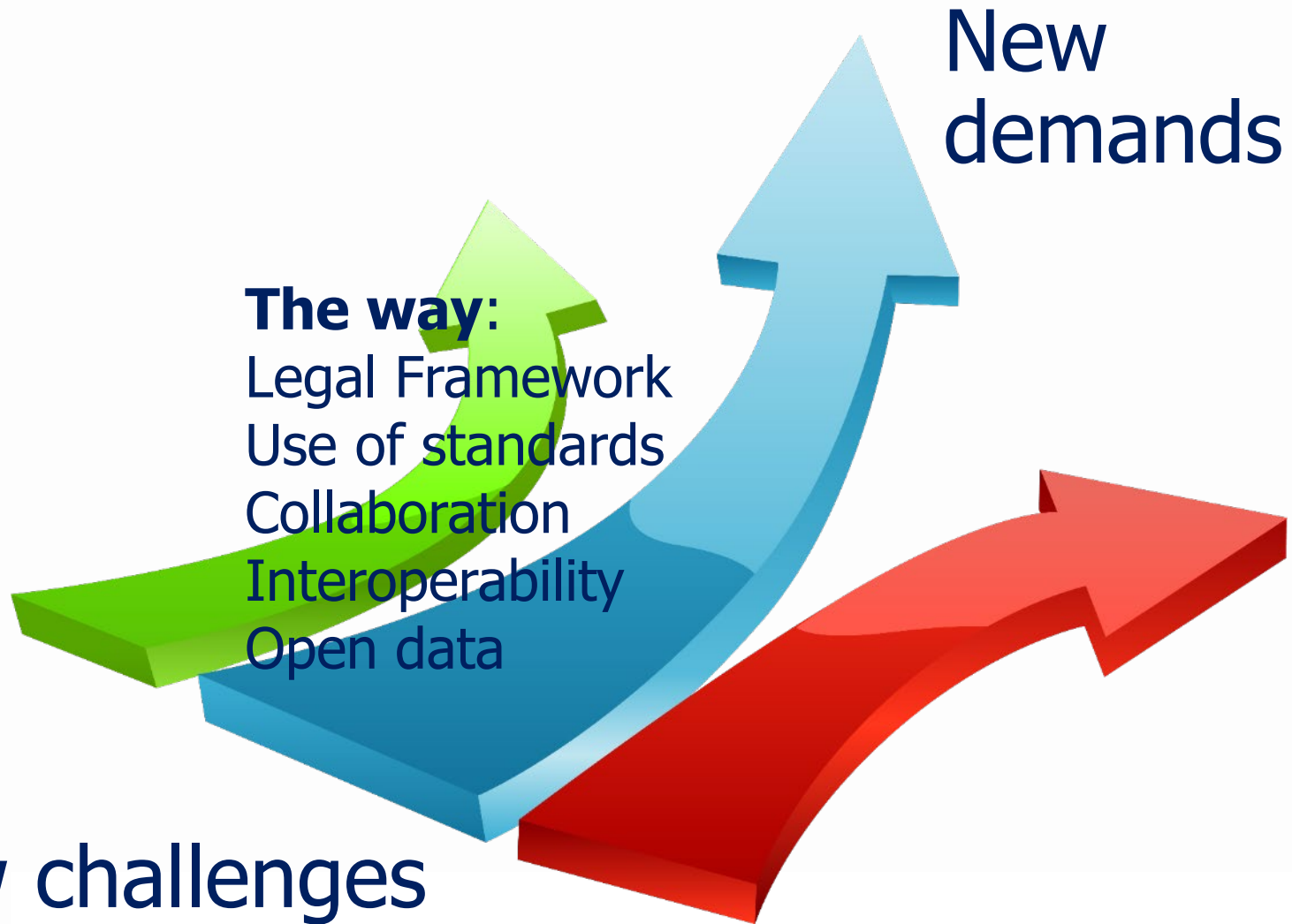
cadastre acquisition

Complet SNIC implementation





What do we expect





Thank you

paulo.torrinha@dgterritorio.pt



Lisbon