

# EGRM Women in Resource Management

Advancing and promoting gender participation in Resource Management



**RESOURCE MANAGEMENT WEEK 2021**

ENABLING SUSTAINABILITY PRINCIPLES IN RESOURCE MANAGEMENT



**UNECE**

# Co-Chairs Women in Resource Management

Since the Dawn of Resource Management



■ **Cristina Robinson Marras**

Co-Chair  
SPE Italy – Board member  
Saipem XSIGHT UK - Development Lead

■ **Maria Angela Capello Cav. OSI**

Co-Chair  
SPE Honorary Member  
Red Tree Consulting Senior Partner



*Miniere di Montevecchio, ca. 1940, photo courtesy of «Achivio Storico Miniere di Sardegna», Sardinia, Italy.*

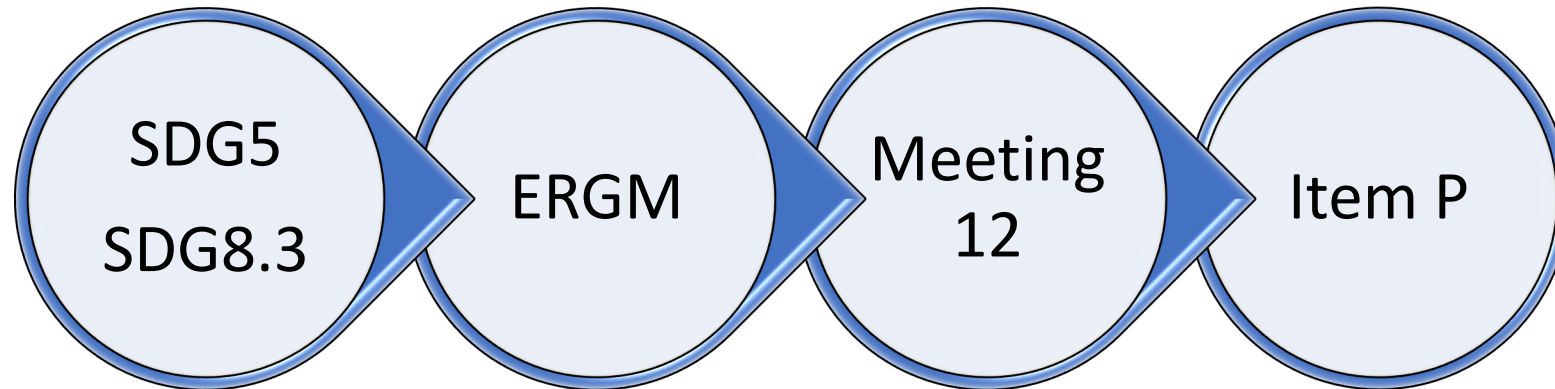


1. Context
2. Objectives
3. Structure and Focus Areas
4. Our Journey
5. Reflections



# EGRM Women in Resource Management

Context



- 1 Review a number of **resource management** projects and try to determine challenges and opportunities in enhancing performance from a **gender perspective**
- 2 Select **sector- or country-specific cases** that illustrate how the principles outlined in **SDG5** could be applied in resource management.

# EGRM Women in Resource Management

## Objectives



The **UNECE EGRM Women in Resource Management** initiative, was launched in 2019 with the aim of advancing and promoting gender participation.

Represents the EGRM proactive engagement in support of the attainment of SDG 5 and SDG 8,

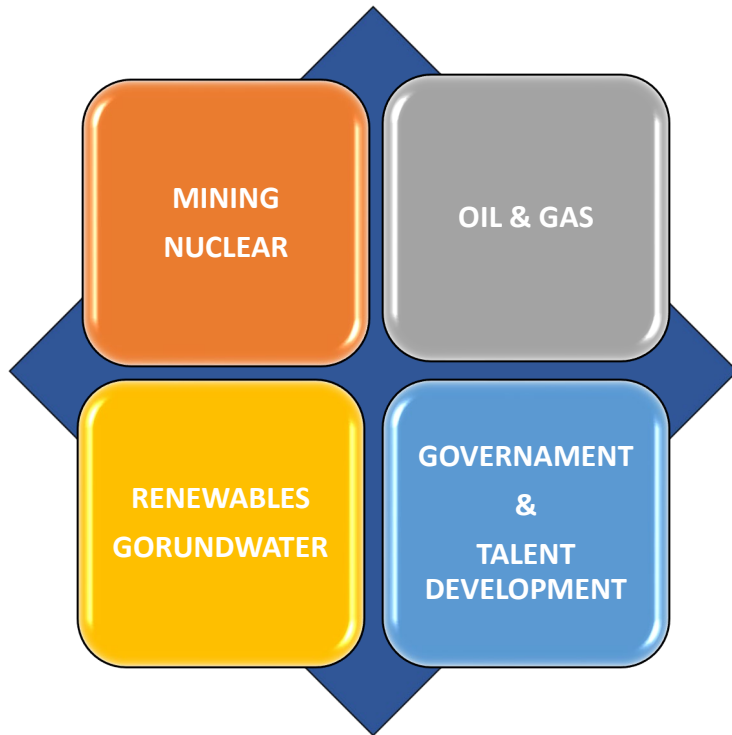
by pursuing the achievement of targets:

- **5.5 - Ensure women’s full and effective participation and equal opportunities for leadership at all levels of decision-making in political, economic and public life.**
- **8.3 - Promote development-oriented policies that support productive activities, decent job creation, entrepreneurship, creativity and innovation, and encourage the formalization and growth of micro-, small- and medium-sized enterprises, including through access to financial services.**



# EGRM Women in Resource Management

## Structure and Focus Areas



**A STRUCTURED APPROACH IN 4 FOCUS AREAS WILL ENABLE OUR ALIGNMENT WITH UNECE EGRM GUIDELINES.**

UNDER THE CURRENT PANDEMIC SCENARIO AND WITHIN REACH OF ITS ACTIVITIES, THE WOMEN IN RESOURCE MANAGEMENT INITIATIVE WILL BE RESPONSIVE TO THE GLOBAL EFFORTS TO REBUILD SOCIETIES.

**GENDER EMPOWERMENT AND SUPPORT TO MICRO, SMALL AND MEDIUM ENTERPRISES (MSME) WITHIN THE RESOURCE MANAGEMENT SECTOR IS CRITICAL FOR A SUSTAINABLE POST PANDEMIC RECOVERY.**

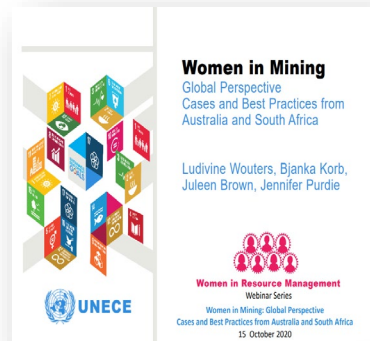
THE APPLICATION OF A GENDER LENS IN DESIGNING SOCIO-ECONOMIC RESPONSES IS PARTICULARLY IMPORTANT, GIVEN THE LEADING ROLE THAT WOMEN ARE PLAYING IN FIGHTING THE PANDEMIC.

# Our Journey

## Supporting SDG 5 and SDG 8



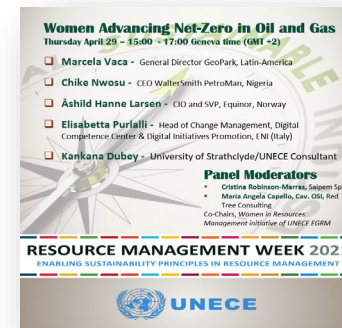
- Launching of the Initiative
- Setting of Goals for the Group



- First Webinar
- Mining
- Focus on Australia and Africa
- 15 Oct 2020



- First Workshop on women in MSME Micro, Small and Medium entrepreneurship s for RM
- 17 Dec 2020



- Second Webinar
- Women advancing Net-Zero in Oil and Gas
- 29 April 2021

- Roadmap of Webinars, Workshops and activities
- Expansion of Communication with stakeholders

**GREAT ADVANCEMENTS HAVE BEEN ACHIEVED, MORE HAS TO BE DONE AND GREATER IS THE EFFORT AND RESPONSE REQUIRED IN A POST PANDEMIC SCENARIO**

# Women Participation

## Since the Dawn of Resource Management



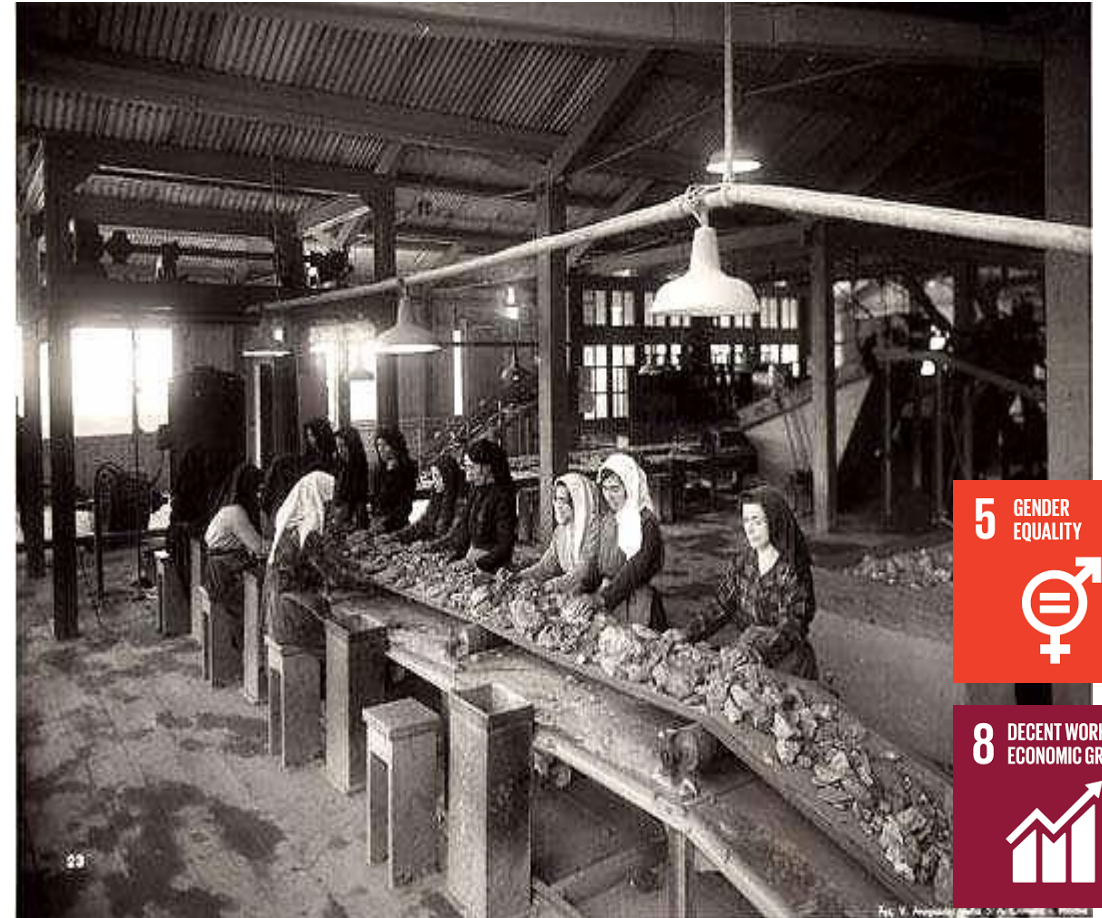
Women have been an important component of Resource Management since the early days of humanity.

They have been an integral part of society activities related to extracting, refining and distributing natural resources.

Their awareness on education, financial opportunities, and equity frames empowers them to achieve more.

The **UNECE EGRM Women in Resource Management** initiative aims to promote, support and expand their participation in this story of challenges and successes.

*Miniere di Montevecchio, ca. 1940, photo courtesy of «Achivio Storico Miniere di Sardegna», Sardinia, Italy.*







# Thank you!

Maria A. Capello, Cav. OSI  
Cristina Robinson Marras

**UNECE**

Date 29 | 04 | 2021, Geneva



## RESOURCE MANAGEMENT WEEK 2021

ENABLING SUSTAINABILITY PRINCIPLES IN RESOURCE MANAGEMENT



**UNECE**