



---

**Economic Commission for Europe****Inland Transport Committee****Working Party on Customs Questions affecting Transport****Group of Experts on Conceptual and  
Technical Aspects of Computerization of the TIR Procedure****First session**

Geneva, 27–29 January 2021

Item 6 (a) of the provisional agenda

**eTIR international system:****Progress report on the development of the eTIR international system****eTIR web services – Message I7 - Record declaration data\*****Note by the secretariat****I. Introduction - Mandate**

1. The Inland Transport Committee during its eighty-second session (23–28 February 2020) approved (ECE/TRANS/294, para. 84<sup>1</sup>) the establishment of the Group of Experts on Conceptual and Technical Aspects of Computerization of the TIR Procedure (WP.30/GE.1) and endorsed its ToR<sup>2</sup> (ECE/TRANS/WP30/2019/9 and ECE/TRANS/WP.30/2019/9/Corr.1) pending approval by UNECE Executive Committee (EXCOM). EXCOM during its Remote informal meeting of members of the Executive Committee (20 May 2020) approved the establishment of the Group of Experts on Conceptual and Technical Aspects of Computerization of the TIR Procedure (WP.30/GE.1) until 2022, based on the terms of reference included in document ECE/TRANS/WP.30/2019/9 and Corr.1, as contained in document ECE/TRANS/294 (ECE/EX/2020/L.2, para. 5(b))<sup>3</sup>.

---

\* This document was submitted late for processing since clearance in finalizing this document took longer than anticipated.

<sup>1</sup>Decision of the Inland Transport Committee para 84 / ECE/TRANS/294  
[www.unece.org/fileadmin/DAM/trans/doc/2020/itc/ECE-TRANS-294e.pdf](http://www.unece.org/fileadmin/DAM/trans/doc/2020/itc/ECE-TRANS-294e.pdf)

<sup>2</sup>Terms of reference of the newly established Group approved by the Inland Transport Committee and the Executive Committee (EXCOM) of UNECE  
[www.unece.org/fileadmin/DAM/trans/bcf/wp30/documents/2019/ECE-TRANS-WP30-2019-09e.pdf](http://www.unece.org/fileadmin/DAM/trans/bcf/wp30/documents/2019/ECE-TRANS-WP30-2019-09e.pdf)  
and corrigendum  
[www.unece.org/fileadmin/DAM/trans/bcf/wp30/documents/2019/ECE-TRANS-WP30-2019-09c1e.pdf](http://www.unece.org/fileadmin/DAM/trans/bcf/wp30/documents/2019/ECE-TRANS-WP30-2019-09c1e.pdf)

<sup>3</sup>Decision of EXCOM, ECE/EX/2020/L.2 / para 5(b)  
[www.unece.org/fileadmin/DAM/commission/EXCOM/Agenda/2020/Remote\\_informal\\_mtg\\_20\\_05\\_2020/Item\\_4\\_ECE\\_EX\\_2020\\_L.2\\_ITC\\_Sub\\_bodies\\_E.pdf](http://www.unece.org/fileadmin/DAM/commission/EXCOM/Agenda/2020/Remote_informal_mtg_20_05_2020/Item_4_ECE_EX_2020_L.2_ITC_Sub_bodies_E.pdf)

2. The terms of reference of the Group stipulate that the Group should focus its work on preparing a new version of the eTIR specifications, pending the formal establishment of TIB. More specifically the Group should (a) prepare a new version of the technical specifications of the eTIR procedure, and amendments thereto, ensuring their alignment with the functional specifications of the eTIR procedure; (b) prepare a new version of the functional specifications of the eTIR procedure, and amendments thereto, ensuring their alignment with the conceptual specifications of the eTIR procedure; (c) prepare amendments to the conceptual specifications of the eTIR procedure, upon requests by WP.30.

3. The current document presents the technical specifications of the eTIR messages “I7 - Record declaration data”. This document is valid for the eTIR international system version 1.0 based on the eTIR specifications version 4.3a.

## II. Related documents

### A. Project documents and collaboration platform

- eTIR documentation portal: [wiki.unece.org/display/ED/eTIR+documentation+-+Homepage](http://wiki.unece.org/display/ED/eTIR+documentation+-+Homepage)
- Project guidelines for customs to connect to the eTIR international system : [wiki.unece.org/download/attachments/106299939/Project%20Guidelines%20for%20customs%20to%20connect%20to%20the%20eTIR%20international%20system.pdf](http://wiki.unece.org/download/attachments/106299939/Project%20Guidelines%20for%20customs%20to%20connect%20to%20the%20eTIR%20international%20system.pdf)
- eTIR web services - Introduction document: [wiki.unece.org/download/attachments/106299935/eTIR%20web%20services%20-%20Introduction%20document.pdf](http://wiki.unece.org/download/attachments/106299935/eTIR%20web%20services%20-%20Introduction%20document.pdf)
- eTIR web services - Messages I1-I2: I1 - Accept guarantee / I2 - Acceptance : [wiki.unece.org/display/ED/Technical+Guides](http://wiki.unece.org/display/ED/Technical+Guides)

### B. Legal framework

- TIR Convention handbook: [www.unece.org/tir/tir-hb.html](http://www.unece.org/tir/tir-hb.html)
- Annex 11 to the TIR Convention: [www.unece.org/fileadmin/DAM/trans/bcf/ac2/documents/2020/ECE-TRANS-WP30-AC2-147e.pdf#page=12](http://www.unece.org/fileadmin/DAM/trans/bcf/ac2/documents/2020/ECE-TRANS-WP30-AC2-147e.pdf#page=12)

### C. eTIR specifications

- Introduction to the eTIR conceptual, functional and technical v4.2: [www.unece.org/fileadmin/DAM/trans/bcf/adhoc/conc\\_tech/documents/id17-05e.pdf](http://www.unece.org/fileadmin/DAM/trans/bcf/adhoc/conc_tech/documents/id17-05e.pdf)
- eTIR concepts v4.2: [www.unece.org/fileadmin/DAM/trans/bcf/adhoc/conc\\_tech/documents/id17-06e.pdf](http://www.unece.org/fileadmin/DAM/trans/bcf/adhoc/conc_tech/documents/id17-06e.pdf)
- eTIR Functional specifications v4.2: [www.unece.org/fileadmin/DAM/trans/bcf/adhoc/conc\\_tech/documents/id17-07e.pdf](http://www.unece.org/fileadmin/DAM/trans/bcf/adhoc/conc_tech/documents/id17-07e.pdf)
- Approved amendments to the eTIR specifications v4.2 to prepare v4.3: [www.unece.org/fileadmin/DAM/trans/bcf/wp30/documents/2020/ECE-TRANS-WP30-2020-07e.pdf](http://www.unece.org/fileadmin/DAM/trans/bcf/wp30/documents/2020/ECE-TRANS-WP30-2020-07e.pdf)

### D. Additional resources

- eTIR XML schemas: [wiki.unece.org/display/ED/Technical+artefacts](http://wiki.unece.org/display/ED/Technical+artefacts)
- eTIR code lists: [www.unece.org/fileadmin/DAM/trans/bcf/eTIR/documents/CodeLists0\\_4.pdf](http://www.unece.org/fileadmin/DAM/trans/bcf/eTIR/documents/CodeLists0_4.pdf)

- List of eTIR focal points: [www.unece.org/trans/bcf/etir/focals.html](http://www.unece.org/trans/bcf/etir/focals.html)

### **III. Purpose**

4. This document describes the I7 - Record declaration data request message of the eTIR international system web services. It provides all the specifics required to use them (prepare or receive), explains how and when they should be used and explains the error codes that may be returned. It also contains examples and fallback procedures, if applicable.

### **IV. Target audience**

5. This guide is intended for the customs authorities ICT teams in charge of interconnecting their national customs systems to the eTIR international system.

### **V. Prerequisites**

6. In order to ensure an implementation that delivers the best value and services to the customs authorities, we recommend for the ICT team in charge of establishing the connection to the eTIR international system web services to be accompanied by a TIR subject matter expert.

7. This document is to be read after having an understanding of the eTIR concepts and having read the eTIR functional specifications. It is highly recommended keeping the eTIR web services introduction document at hand as the current document refers to many elements and diagrams available in that document (and in its glossary).

8. From a technical perspective, the following steps should have been completed at this point:

- A secured connection to the User Acceptance Testing (UAT) environment of the eTIR international system is established;
- The endpoint URL to the UAT environment is clearly identified and properly configured in the national customs systems;
- All the actions mentioned in the prerequisites section of the eTIR web services introduction document are performed;
- All the tools required to prepare, receive, test and troubleshoot the messages are ready.

9. All eTIR messages are identified and belong to a flow described in the eTIR sequence diagrams section of the eTIR web services introduction document. It is key to respect this sequencing, otherwise the eTIR international system will return errors due to invalid sequencing of the messages as described in the dedicated eTIR error code web page.

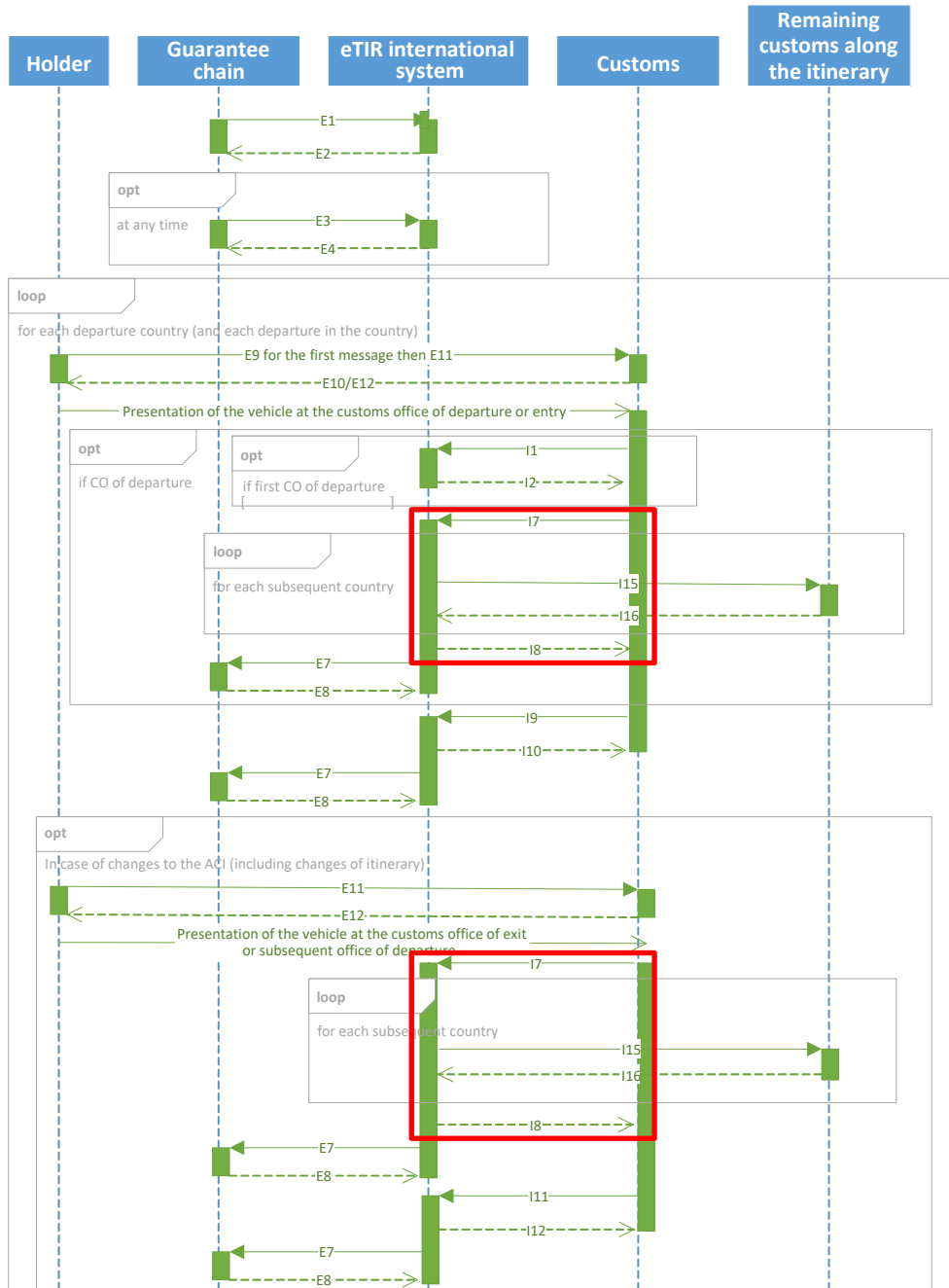
## **VI. "I7-Record declaration data" message**

### **A. Sequence diagrams**

10. The following sequence diagrams highlight the role and sequence position of the I7 - Record declaration data and I8 - Record declaration data results messages in the context of TIR departure, TIR transit or TIR destination operations.

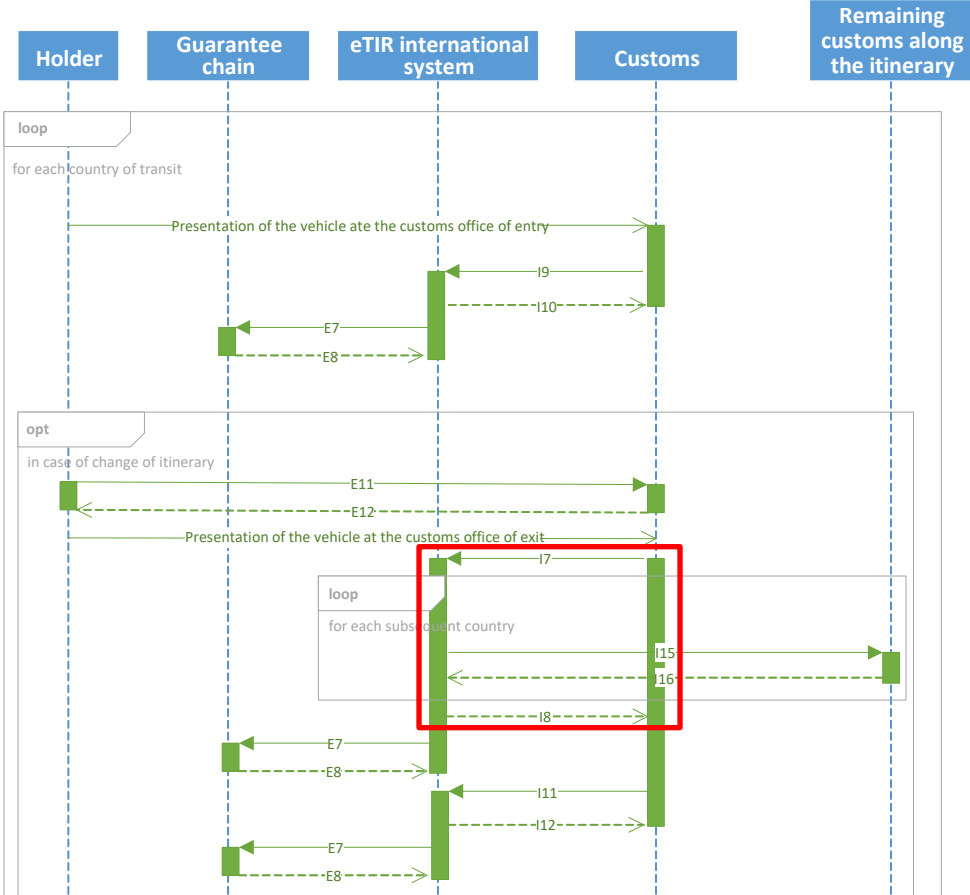
1. Departure

Figure I  
Time sequence diagram – Departure



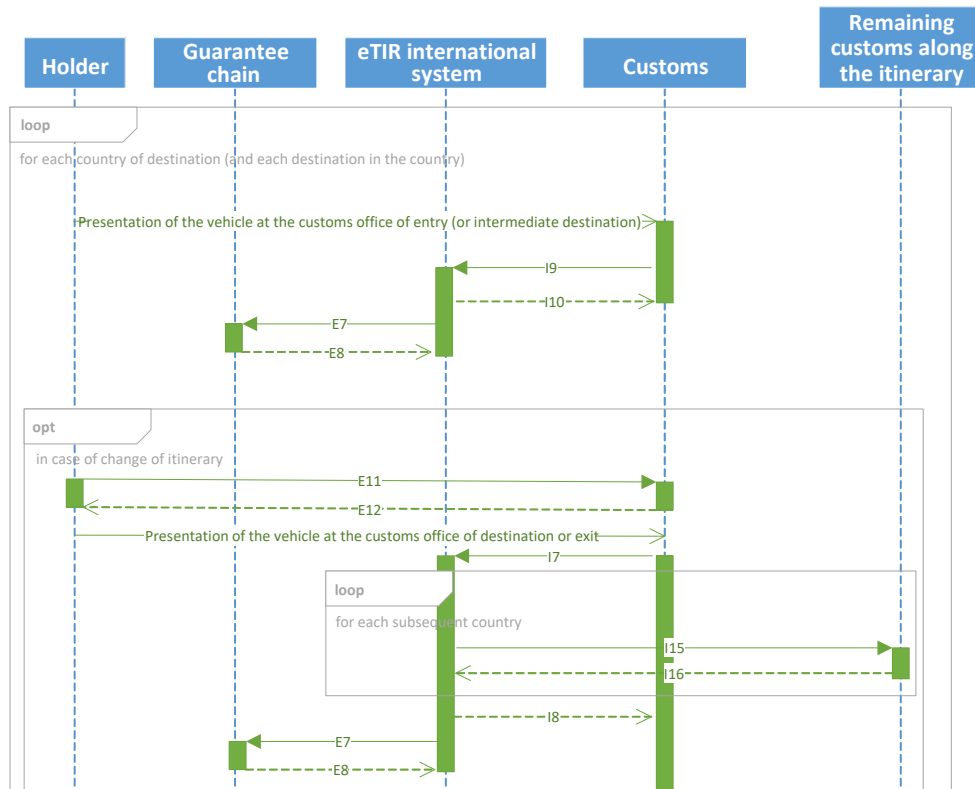
2. Transit

Figure II  
Time sequence diagram – Transit



### 3. Destination

Figure III  
Time sequence diagram – Destination



## B. Message context

11. The I7 - Record declaration data message is mandatory before starting a TIR transport and should be prepared and sent immediately after the I1 - Accept guarantee message has been sent by the same customs office. The I7 - Record declaration data contains the data relevant to the declaration accepted by the customs authorities and allows them to record in the eTIR international system all the information related to the declaration for this TIR transport.

### 1. Message prerequisites

12. In order for this message to be properly interpreted by the eTIR international system, the following messages should have been exchanged before this one:

- E1 - Register guarantee and E2 - Registration results (between the guarantee chain and the eTIR international system): the eGuarantee that was purchased by the holder must first be registered by the guarantee chain to the eTIR international system so it is known and usable in the system.
- E9 - Advance TIR data and E10 - Advance TIR data results (between the TIR carnet holder and the national customs systems): the holder will have sent to the customs office of departure the advance TIR data that acts as the pre-declaration for the transport.
- I1 - Accept guarantee and I2 - Acceptance results (between the customs authority systems and the eTIR international system): the customs office of departure will have sent to the eTIR international system its acceptance of the guarantee for the transport.

**2. Endpoint URL**

13. The URL of the endpoint to use when sending the I7 - Record declaration data request message is: [etir-uat-01.unece.org/etir/v4.3/customs/recordDeclarationData](http://etir-uat-01.unece.org/etir/v4.3/customs/recordDeclarationData)

14. Also note that the WSDL can be accessed at the following URL: [etir-uat-01.unece.org/etir/v4.3/customs/recordDeclarationData?wsdl](http://etir-uat-01.unece.org/etir/v4.3/customs/recordDeclarationData?wsdl)

## C. "I7 - Record declaration data" request message

### 1. Description

15. The national customs system sends the I7 - Record declaration data request message to the eTIR international system to record the declaration data related to the beginning of a TIR transport.

16. The XSD file related to the I7 - Record declaration data message is available at the following URL: [www.unece.org/trans/bcf/etir/](http://www.unece.org/trans/bcf/etir/).

### 2. Field list

<i>eTIR field name</i>	<i>Mapping to the XML element (XPath)</i>	<i>Mandatory</i>	<i>Format</i>	<i>Code lists</i>	<i>Conditions</i>	<i>Rules</i>	<i>WCO ID</i>
MESSAGE							75B
└ Message function, coded	FunctionCode	R	n..2	CL16			017
└ Message identifier	ID	R	an..70				D014
└ Type, coded	TypeCode	R	an..3	CL26			D013
└ ADVANCETIRDATA	Declaration	R					
└ Message function, coded	Declaration/FunctionCode	R	n..2	CL16			017
└ Functional reference	Declaration/FunctionalReferenceID	D	an..70		C008		D026
└ Message Identifier	Declaration/ID	R	an..70				D014
└ Issuing date	Declaration/IssueDateTime	R	an..35				D011
└ Type, coded	Declaration/TypeCode	R	an..3	CL26			D013
└ Version	Declaration/VersionID	R	an..9				383
└ Total gross weight	Declaration/TotalGrossMassMeasure	O	n..16,6				131
└ ADDITIONALINFORMATION	Declaration/AdditionalInformation	D			C008		03A
└ Heavy and bulky goods indicator	Declaration/AdditionalInformation/StatementCode	R	an..17	CL14			226
└ Remarks	Declaration/AdditionalInformation/StatementDescription	O	an..512				225
└ AGENT	Declaration/Agent	O					05A



<i>eTIR field name</i>	<i>Mapping to the XML element (XPATH)</i>	<i>Mandatory</i>	<i>Format</i>	<i>Code lists</i>	<i>Conditions</i>	<i>Rules</i>	<i>WCO ID</i>
Name	Declaration/Agent/Name	D	an..70		C001		R003
Code	Declaration/Agent/ID	D	an..35		C001		R004
Role, coded	Declaration/Agent/RoleCode	R	an..3	CL02			R005
AMENDMENT	Declaration/Amendment	D			C008		06A
Amendment code	Declaration/Amendment/ChangeReasonCode	R	an..3	CL17			099
POINTER	Declaration/Amendment/Pointer	R					97A
Sequence number	Declaration/Amendment/Pointer/SequenceNumeric	R	n..5				006
Location	Declaration/Amendment/Pointer/Location	R	an..512				512
SUBCONTRACTOR	Declaration/Carrier	O					18A
Name	Declaration/Carrier/Name	D	an..70				R011
Code	Declaration/Carrier/ID	D	an..35				R012
ADDRESS	Declaration/Carrier/Address	D					04A
City name	Declaration/Carrier/Address/CityName	R	an..35				241
Country, coded	Declaration/Carrier/Address/CountryCode	R	a2	CL04			242
Street and number/P.O. Box	Declaration/Carrier/Address/Line	R	an..256				239
Postcode identification	Declaration/Carrier/Address/PostcodeID	R	an..17				245
CONSIGNMENT	Declaration/Consignment	D					28A
Sequence number	Declaration/Consignment/SequenceNumeric	R	n..5				006
ATTACHEDDOCUMENTS	Declaration/Consignment/AdditionalDocument	O					02A
Number	Declaration/Consignment/AdditionalDocument/ID	R	an..70				D005
Issuing date	Declaration/Consignment/AdditionalDocument/IssueDateTime	R	an..35				D002
Type, coded	Declaration/Consignment/AdditionalDocument/TypeCode	R	an..3	CL06			D006

<i>eTIR field name</i>	<i>Mapping to the XML element (XPATH)</i>	<i>Mandatory</i>	<i>Format</i>	<i>Code lists</i>	<i>Conditions</i>	<i>Rules</i>	<i>WCO ID</i>
⊥ BINARYFILE	Declaration/Consignment/AdditionalDocument/BinaryFile	O					72B
Identification	Declaration/Consignment/AdditionalDocument/BinaryFile/ID	R	an..256				M001
Title	Declaration/Consignment/AdditionalDocument/BinaryFile/Title	R	an..256				M002
Author name	Declaration/Consignment/AdditionalDocument/BinaryFile/AuthorName	O	an..70				M003
Version	Declaration/Consignment/AdditionalDocument/BinaryFile/VersionID	O	an..17				M004
File name	Declaration/Consignment/AdditionalDocument/BinaryFile/FileNametext	O	an..256				M005
URI	Declaration/Consignment/AdditionalDocument/BinaryFile/URIID	O	an..2048				M006
MIME	Declaration/Consignment/AdditionalDocument/BinaryFile/MIMECode	O	an..70				M007
Encoding	Declaration/Consignment/AdditionalDocument/BinaryFile/EncodingCode	O	an..17				M008
Character set	Declaration/Consignment/AdditionalDocument/BinaryFile/CharacterSetCode	O	n..17				M009
Include binary object	Declaration/Consignment/AdditionalDocument/BinaryFile/IncludedBinaryObjectBinaryObject	O	N/A				M010
Access	Declaration/Consignment/AdditionalDocument/BinaryFile/Access	O	an..256				M011
Description	Declaration/Consignment/AdditionalDocument/BinaryFile/Description	O	an..256				M012
Size	Declaration/Consignment/AdditionalDocument/BinaryFile/SizeMeasure	O	n..16,6				M013

<i>eTIR field name</i>	<i>Mapping to the XML element (XPATH)</i>	<i>Mandatory</i>	<i>Format</i>	<i>Code lists</i>	<i>Conditions</i>	<i>Rules</i>	<i>WCO ID</i>
└ Type	Declaration/Consignment/AdditionalDocument/BinaryFile/TypeCode	O	an..6				M014
└ Hash code	Declaration/Consignment/AdditionalDocument/BinaryFile/HashCode	O	an..256				M015
└ Hash code algorithm id	Declaration/Consignment/AdditionalDocument/BinaryFile/HashCodeAlgorithmIDCode	O	an..6				M016
└┐ CONSIGNMENTITEM	Declaration/Consignment/ConsignmentItem	R					29A
└ Sequence number	Declaration/Consignment/ConsignmentItem/SequenceNumber	R	n..5				006
└┐ ADDITIONALINFORMATION	Declaration/Consignment/ConsignmentItem/AdditionalInformation	O					03A
└ Remarks	Declaration/Consignment/ConsignmentItem/AdditionalInformation/Content	R	an..512				105
└┐ GOODS	Declaration/Consignment/ConsignmentItem/Commodity	R					23A
└ Description	Declaration/Consignment/ConsignmentItem/Commodity/CargoDescription	D	an..256		C004		138
└┐ CLASSIFICATION	Declaration/Consignment/ConsignmentItem/Commodity/Classification	O				R008	21A
└ Code	Declaration/Consignment/ConsignmentItem/Commodity/Classification/ID	R	an..18				145
└┐ CONSIGNEE	Declaration/Consignment/ConsignmentItem/Consignee	O					27A
└ Name	Declaration/Consignment/ConsignmentItem/Consignee/Name	D	an..70		C001		R014
└ Code	Declaration/Consignment/ConsignmentItem/Consignee/ID	D	an..35		C001		R015
└┐ ADDRESS	Declaration/Consignment/ConsignmentItem/Consignee/Address	D			C001		04A

<i>eTIR field name</i>	<i>Mapping to the XML element (XPATH)</i>	<i>Mandatory</i>	<i>Format</i>	<i>Code lists</i>	<i>Conditions</i>	<i>Rules</i>	<i>WCO ID</i>
City name	Declaration/Consignment/ConsignmentItem/Consignee/Address/CityName	R	an..35				241
Country, coded	Declaration/Consignment/ConsignmentItem/Consignee/Address/CountryCode	R	a2	CL04			242
Street and number/P.O. Box	Declaration/Consignment/ConsignmentItem/Consignee/Address	R	an..256				239
Postcode identification	Declaration/Consignment/ConsignmentItem/Consignee/Address/PostcodeID	R	an..17				245
CONSIGNOR	Declaration/Consignment/ConsignmentItem/Consignor	O					30A
Name	Declaration/Consignment/ConsignmentItem/Consignor/Name	D	an..70		C001		R020
Code	Declaration/Consignment/ConsignmentItem/Consignor/ID	D	an..35		C001		R021
ADDRESS	Declaration/Consignment/ConsignmentItem/Consignor/Address	D			C001		04A
City name	Declaration/Consignment/ConsignmentItem/Consignor/Address/CityName	R	an..35				241
Country, coded	Declaration/Consignment/ConsignmentItem/Consignor/Address/CountryCode	R	a2	CL04			242
Street and number/P.O. Box	Declaration/Consignment/ConsignmentItem/Consignor/Address/Line	R	an..256				239
Postcode identification	Declaration/Consignment/ConsignmentItem/Consignor/Address/PostcodeID	R	an..17				245
DELIVERYDESTINATION	Declaration/Consignment/ConsignmentItem/DeliveryDestination	O					44A
Name	Declaration/Consignment/ConsignmentItem/DeliveryDestination/Name	R	an..70				R027
ADDRESS	Declaration/Consignment/ConsignmentItem/DeliveryDestination/Address	R					04A

<i>eTIR field name</i>	<i>Mapping to the XML element (XPATH)</i>	<i>Mandatory</i>	<i>Format</i>	<i>Code lists</i>	<i>Conditions</i>	<i>Rules</i>	<i>WCO ID</i>
City name	Declaration/Consignment/ConsignmentItem/DeliveryDestination/Address/CityName	R	an..35				241
Country, coded	Declaration/Consignment/ConsignmentItem/DeliveryDestination/Address/CountryCode	R	a2	CL04			242
Street and number/P.O. Box	Declaration/Consignment/ConsignmentItem/DeliveryDestination/Address/Line	R	an..256				239
L Postcode identification	Declaration/Consignment/ConsignmentItem/DeliveryDestination/Address/PostcodeID	R	an..17				245
T GOODSMEASURE	Declaration/Consignment/ConsignmentItem/GoodsMeasure	R					65A
L Gross weight	Declaration/Consignment/ConsignmentItem/GoodsMeasure/GrossMassMeasure	R	n..16,6				126
T PACKAGING	Declaration/Consignment/ConsignmentItem/Packaging	R					93A
Marks and numbers	Declaration/Consignment/ConsignmentItem/Packaging/MarksNumbersID	O	an..512				142
Number of packages	Declaration/Consignment/ConsignmentItem/Packaging/QuantityQuantity	D	n..8		C002		144
L Type, coded	Declaration/Consignment/ConsignmentItem/Packaging/TypeCode	R	an..2	CL07			141
T TRANSPORTEQUIPMENT	Declaration/Consignment/ConsignmentItem/TransportEquipment	D			C003		31B
L Identification	Declaration/Consignment/ConsignmentItem/TransportEquipment/ID	R	an..17				159
T UCR	Declaration/Consignment/ConsignmentItem/UCR	O					35B
L Identifier	Declaration/Consignment/ConsignmentItem/UCR/ID	O	an..35				016
T LOADINGLOCATION	Declaration/Consignment/LoadingLocation	O					83A
L Name	Declaration/Consignment/LoadingLocation/Name	O	an..256				L009
T NOTIFYPARTY	Declaration/Consignment/NotifyParty	O					89A

<i>eTIR field name</i>	<i>Mapping to the XML element (XPATH)</i>	<i>Mandatory</i>	<i>Format</i>	<i>Code lists</i>	<i>Conditions</i>	<i>Rules</i>	<i>WCO ID</i>
Name	Declaration/Consignment/NotifyParty/Name	D	an..70		C001		R045
Code	Declaration/Consignment/NotifyParty/ID	D	an..35		C001		R046
ADDRESS	Declaration/Consignment/NotifyParty/Address	D			C001		04A
City name	Declaration/Consignment/NotifyParty/Address/CityName	R	an..35				241
Country, coded	Declaration/Consignment/NotifyParty/Address/CountryCode	R	a2	CL04			242
Street and number/P.O. Box	Declaration/Consignment/NotifyParty/Address/Line	R	an..256				239
Postcode identification	Declaration/Consignment/NotifyParty/Address/PostcodeID	R	an..17				245
 CUSTOMSOFFICEOFDEPARTURE	Declaration/Consignment/TransitDeparture	R					25B
Code	Declaration/Consignment/TransitDeparture/ID	R	an..17				L087
 CUSTOMSOFFICEOFDESTINATION	Declaration/Consignment/TransitDestination	R					26B
Code	Declaration/Consignment/TransitDestination/ID	R	an..17				L008
TRANSPORTMEANS	Declaration/Consignment/TransitTransportMeans	R					29B
Identification	Declaration/Consignment/TransitTransportMeans/ID	R	an..25				T007
Type, coded	Declaration/Consignment/TransitTransportMeans/TypeCode	R	an..4	CL05			T011
Nationality	Declaration/Consignment/TransitTransportMeans/RegistrationNationalityCode	R	a2	CL04			T015
Conveyance reference number	Declaration/Consignment/TransitTransportMeans/JourneyID	O	an..17				149
COUNTRYOFROUTING	Declaration/Consignment/TransitTransportMeans/Itinerary	R				R001	81A
Sequence number	Declaration/Consignment/TransitTransportMeans/Itinerary/SequenceNumeric	R	n..5				006
Country, coded	Declaration/Consignment/TransitTransportMeans/Itinerary/RoutingCountryCode	R	a2	CL04			064

<i>eTIR field name</i>	<i>Mapping to the XML element (XPATH)</i>	<i>Mandatory</i>	<i>Format</i>	<i>Code lists</i>	<i>Conditions</i>	<i>Rules</i>	<i>WCO ID</i>
⊥ TRANSPORTEQUIPMENT	Declaration/Consignment/TransportEquipment	D			C003		31B
Sequence number	Declaration/Consignment/TransportEquipment/SequenceNumber	R	n..5				006
Size and type identification	Declaration/Consignment/TransportEquipment/CharacteristicCode	R	an..4	CL01			152
Identification	Declaration/Consignment/TransportEquipment/ID	R	an..17				159
⊥ CERTIFICATEOFAPPROVAL	Declaration/Consignment/TransportEquipment/AdditionalDocument	D					02A
Number	Declaration/Consignment/TransportEquipment/AdditionalDocument/ID	R	an..70				D005
Issuing date	Declaration/Consignment/TransportEquipment/AdditionalDocument/IssueDateTime	R	an..35				D002
Type, coded	Declaration/Consignment/TransportEquipment/AdditionalDocument/TypeCode	R	an..3	CL06			D006
⊥ BINARYFILE	Declaration/Consignment/TransportEquipment/AdditionalDocument/BinaryFile	O					72B
Identification	Declaration/Consignment/TransportEquipment/AdditionalDocument/BinaryFile/ID	R	an..256				M001
Title	Declaration/Consignment/TransportEquipment/AdditionalDocument/BinaryFile/Title	R	an..256				M002
Author name	Declaration/Consignment/TransportEquipment/AdditionalDocument/BinaryFile/AuthorName	O	an..70				M003
Version	Declaration/Consignment/TransportEquipment/AdditionalDocument/BinaryFile/VersionID	O	an..17				M004
File name	Declaration/Consignment/TransportEquipment/AdditionalDocument/BinaryFile/FileNameText	O	an..256				M005
URI	Declaration/Consignment/TransportEquipment/AdditionalDocument/BinaryFile/URIID	O	an..2048				M006

<i>eTIR field name</i>	<i>Mapping to the XML element (XPATH)</i>	<i>Mandatory</i>	<i>Format</i>	<i>Code lists</i>	<i>Conditions</i>	<i>Rules</i>	<i>WCO ID</i>
MIME	Declaration/Consignment/TransportEquipment/AdditionalDocument/BinaryFile/MIMECode	O	an..70				M007
Encoding	Declaration/Consignment/TransportEquipment/AdditionalDocument/BinaryFile/EncodingCode	O	an..17				M008
Character set	Declaration/Consignment/TransportEquipment/AdditionalDocument/BinaryFile/CharacterSetCode	O	n..17				M009
Include binary object	Declaration/Consignment/TransportEquipment/AdditionalDocument/BinaryFile/IncludedBinaryObjectBinaryObject	O	N/A				M010
Access	Declaration/Consignment/TransportEquipment/AdditionalDocument/BinaryFile/Access	O	an..256				M011
Description	Declaration/Consignment/TransportEquipment/AdditionalDocument/BinaryFile/Description	O	an..256				M012
Size	Declaration/Consignment/TransportEquipment/AdditionalDocument/BinaryFile/SizeMeasure	O	n..16,6				M013
Type	Declaration/Consignment/TransportEquipment/AdditionalDocument/BinaryFile/TypeCode	O	an..6				M014
Hash code	Declaration/Consignment/TransportEquipment/AdditionalDocument/BinaryFile/HashCode	O	an..256				M015
Hash code algorithm id	Declaration/Consignment/TransportEquipment/AdditionalDocument/BinaryFile/HashCodeAlgorithmIDCode	O	an..6				M016
SEAL	Declaration/Consignment/TransportEquipment/Seal	O					44B
Sequence number	Declaration/Consignment/TransportEquipment/Seal/SequenceNumeric	R	n..5			R003, R004	006
Seal number	Declaration/Consignment/TransportEquipment/Seal/ID	R	an..35			R005	165
Seal type code	Declaration/Consignment/TransportEquipment/Seal/TypeCode	O	an..3	CL08			407
GUARANTEE	Declaration/DeclarationGuarantee	D			C008		92B



<i>eTIR field name</i>	<i>Mapping to the XML element (XPATH)</i>	<i>Mandatory</i>	<i>Format</i>	<i>Code lists</i>	<i>Conditions</i>	<i>Rules</i>	<i>WCO ID</i>
⊢ Validity	Declaration/DeclarationGuarantee/ExpirationDateTime	R	an..35				275
⊣ Reference	Declaration/DeclarationGuarantee/ReferenceID	R	an..35				100
⊣ HOLDER	Declaration/Principal	D			C008		28B
⊢ Name	Declaration/Principal/Name	O	an..70				R001
⊢ Code	Declaration/Principal/ID	R	an..35				R002
⊣ ADDRESS	Declaration/Principal/Address	D			C001		04A
⊢ City name	Declaration/Principal/Address/CityName	R	an..35				241
⊢ Country, coded	Declaration/Principal/Address/CountryCode	R	a2	CL04			242
⊢ Street and number/P.O. Box	Declaration/Principal/Address/Line	R	an..256				239
⊣ Postcode identification	Declaration/Principal/Address/PostcodeID	R	an..17				245

### 3. Field descriptions

<i>eTIR field name</i>	<i>Mapping to the XML element (XPATH)</i>	<i>Description</i>	<i>Usage</i>
MESSAGE			
⊢ Message function, coded	FunctionCode	Code describing the function of the message	The value should be set to "9" if this message is the original (the first one to be submitted for this TIR transport) or "4" if this message reflects an amendment to the declaration
⊢ Message identifier	ID	Unique identifier of the message	The value should be a Globally Unique Identifier (GUID) as detailed in the dedicated section of the introduction document
⊢ Type, coded	TypeCode	Code of the message type	The value should be set to "I7"

<i>eTIR field name</i>	<i>Mapping to the XML element (XPath)</i>	<i>Description</i>	<i>Usage</i>
└ ADVANCETIRDATA	Declaration	Class representing the declaration data as accepted by customs	
└ Message function, coded	Declaration/FunctionCode	Code describing the function of the message E9 (or E11) received by the customs	The value should be set to "9" in case a message E9 was received or "4" in case a message E11 was received
└ Functional reference	Declaration/FunctionalReferenceID	Reference to the unique identifier of the message E9 received by the customs in the case of an update	The value should be empty in case a message E9 was received by the customs. Otherwise, the value should be the one from the "Functional Reference" attribute of the message E11 received by the customs
└ Message Identifier	Declaration/ID	Unique identifier of the message E9 (or E11) received by the customs	The value should be the one from the "Message Identifier" attribute of the message E9 (or E11) received by the customs
└ Issuing date	Declaration/IssueDateTime	Date at which the message E9 (or E11) received by the customs, was issued	The value should be the one from the "Issuing date" attribute of the message E9 received by the customs
└ Type, coded	Declaration/TypeCode	Code of the type of the message E9 (or E11) received by the customs	The value should be the one from the "Type, coded" attribute of the message E9 (or E11) received by the customs
└ Version	Declaration/VersionID	Version number of the declaration	The value should be either "1" for the initial declaration or the previous declaration version + 1 for any amendment to the declaration
└ Total gross weight	Declaration/TotalGrossMassMeasure	Total gross weight of goods (including packaging) of the declaration	The value should be the total gross weight as a decimal number The unit should be defined in the Measure Unit. Code attribute and

<i>eTIR field name</i>	<i>Mapping to the XML element (XPATH)</i>	<i>Description</i>	<i>Usage</i>
			should match one of the values listed in the list Measurement unit code (UNECE Recommendation 20) <sup>4</sup>
└ ADDITIONALINFORMATION	Declaration/AdditionalInformation	Class containing potential additional information at the declaration level	
└ Heavy and bulky goods indicator	Declaration/AdditionalInformation/StatementCode	Code describing whether the goods are considered (according to article 29) as "heavy or bulky", as defined article 1 (p) of the TIR Convention.	The value should be "1" if the goods are considered by the customs as "heavy or bulky" or "0" otherwise
└ Remarks	Declaration/AdditionalInformation/StatementDescription	Text used to allow for remarks to the declaration from the TIR Carnet holder	The value contains the remarks to the declaration from the transporter, or remains blank if there are none
└ AGENT	Declaration/Agent	Class representing the potential agent which would declare the goods on behalf of the TIR Carnet holder	
└ Name	Declaration/Agent/Name	Name of the agent	The value should be the official company name, or the first and last name of the person in case of physical person, to allow for quick identification
└ Code	Declaration/Agent/ID	Unique identifier of the agent	The value should be the unique identifier of the agent
└ Role, coded	Declaration/Agent/RoleCode	Code of the role of the agent	The value should be the code matching the role of the agent from

<sup>4</sup> [www.unece.org/fileadmin/DAM/trans/bcf/eTIR/documents/CodeLists0\\_4.pdf#page=134](http://www.unece.org/fileadmin/DAM/trans/bcf/eTIR/documents/CodeLists0_4.pdf#page=134)

<i>eTIR field name</i>	<i>Mapping to the XML element (XPATH)</i>	<i>Description</i>	<i>Usage</i>
			the list Party role code (UN/EDIFACT 3035) <sup>5</sup>
└ AMENDMENT	Declaration/Amendment	List of potential amendments to the declaration	
└ Amendment code	Declaration/Amendment/ChangeReasonCode	Code describing the type of amendment	The value should be the code matching the type of amendment from the list Amendment code (eTIR) (www.unece.org/fileadmin/DAM/trans/bcf/eTIR/documents/CodeLists0_4.pdf#page=121)
└ POINTER	Declaration/Amendment/Pointer	Pointer to the part of the declaration to be amended	
└ Sequence number	Declaration/Amendment/Pointer/SequenceNumeric	Index of the pointer in the list	The value should be the index (1-based) of the pointer in the list
└ Location	Declaration/Amendment/Pointer/Location	Referred message section to be amended	The value should be the XPATH expression pointing towards the section of the message to the amended
└ SUBCONTRACTOR	Declaration/Carrier	Class representing the potential agent which undertakes or arranges transport of goods between named points	
└ Name	Declaration/Carrier/Name	Name of the subcontractor	The value should be the official company name, or the first and last name of the person in case of physical person, to allow for quick identification
└ Code	Declaration/Carrier/ID	Unique identifier of the subcontractor	The value should be the unique identifier of the subcontractor

<sup>5</sup> www.unece.org/fileadmin/DAM/trans/bcf/eTIR/documents/CodeLists0\_4.pdf#page=4

<i>eTIR field name</i>	<i>Mapping to the XML element (XPATH)</i>	<i>Description</i>	<i>Usage</i>
└ ADDRESS	Declaration/Carrier/Address	Class representing the physical address of the subcontractor	
City name	Declaration/Carrier/Address/CityName	City name of the physical address of the subcontractor	The value should be the city name of the physical address of the subcontractor
Country, coded	Declaration/Carrier/Address/CountryCode	Code of the country of the physical address of the subcontractor	The value should be the code of the country of the physical address of the subcontractor from the list Country name code (ISO 3166-1-alpha-2) <sup>6</sup>
Street and number/P.O. Box	Declaration/Carrier/Address/Line	Street name of the physical address of the subcontractor	The value should be the street name and number (or equivalent) of the physical address of the subcontractor
Postcode identification	Declaration/Carrier/Address/PostcodeID	Postal/Zip code of the physical address of the subcontractor	The value should be the postal/ZIP code of the physical address of the subcontractor
└ CONSIGNMENT	Declaration/Consignment	List of details on the transport of goods between a loading point and an unloading point	
Sequence number	Declaration/Consignment/SequenceNumeric	Index of the consignment in the list	The value should be the index (1-based) of the consignment in the list
└ ATTACHEDDOCUMENTS	Declaration/Consignment/AdditionalDocument	List of potential additional documents supplied as part of the declaration and related to the consignment	
Number	Declaration/Consignment/AdditionalDocument/ID	Identifier of the document	The value should be an ID identifying the document and it should be unique among all other

<sup>6</sup> [www.unece.org/fileadmin/DAM/trans/bcf/eTIR/documents/CodeLists0\\_4.pdf#page=38](http://www.unece.org/fileadmin/DAM/trans/bcf/eTIR/documents/CodeLists0_4.pdf#page=38)

<i>eTIR field name</i>	<i>Mapping to the XML element (XPATH)</i>	<i>Description</i>	<i>Usage</i>
			attached documents of the declaration
Issuing date	Declaration/Consignment/AdditionalDocument/IssueDate/Time	Issuing date of the document	The value should be a date to be provided following the EDIFACT 208 format CCYYMMDDHHMMSSZHHMM (www.unece.org/trade/untddid/d13b/tred/tred2379.htm). For Example: 20200820145600+0100 represents 20 August 2020 at 14:56 UTC+01:00.
Type, coded	Declaration/Consignment/AdditionalDocument/TypeCode	Code of the type of the document	The value should be the code of the type of the document from the list Document name code (UN/EDIFACT 1001) <sup>7</sup>
BINARYFILE	Declaration/Consignment/AdditionalDocument/BinaryFile	The content of the document	
Identification	Declaration/Consignment/AdditionalDocument/BinaryFile/ID	Unique identifier of the file representing the document	The value should be an ID identifying the file and it should be unique among all other binary files of the declaration
Title	Declaration/Consignment/AdditionalDocument/BinaryFile/Title	Title of the document	The value should be the title of the document
Author name	Declaration/Consignment/AdditionalDocument/BinaryFile/AuthorName	Name of the author of the document	The value should be the first and last name of the author of the document
Version	Declaration/Consignment/AdditionalDocument/BinaryFile/VersionID	Version number of the document	The value should be the version of the document

<sup>7</sup> www.unece.org/fileadmin/DAM/trans/bcf/eTIR/documents/CodeLists0\_4.pdf#page=58

<i>eTIR field name</i>	<i>Mapping to the XML element (XPATH)</i>	<i>Description</i>	<i>Usage</i>
File name	Declaration/Consignment/AdditionalDocument/Binary File/FileNametext	File name of the document	The value should be the name of the file representing the document, including the extension
URI	Declaration/Consignment/AdditionalDocument/Binary File/URIID	URI of the document	The value should be the Unique Resource Identifier (URI) allowing to access the document instead of relying on a binary object representation
MIME	Declaration/Consignment/AdditionalDocument/Binary File/MIMECode	Code of the MIME type of the file	The value should be one of the MIME types as listed by the IANA organization on the page: <a href="http://www.iana.org/assignments/media-types/media-types.xhtml">www.iana.org/assignments/media-types/media-types.xhtml</a>
Encoding	Declaration/Consignment/AdditionalDocument/Binary File/EncodingCode	Code of the encoding algorithm of the file	The value should be the type of encoding algorithm used to encode the file
Character set	Declaration/Consignment/AdditionalDocument/Binary File/CharacterSetCode	Code of the character set of the file	The value should be the character set used in case the file is a text file
Include binary object	Declaration/Consignment/AdditionalDocument/Binary File/IncludedBinaryObjectBinaryObject	Binary representation of the file	The value should be the content of the file represented using the characteristics mentioned in the other attributes (EncodingCode and CharacterSetCode)
Access	Declaration/Consignment/AdditionalDocument/Binary File/Access	Access information of the file	The value should be the information needed to access the file, such as security and download parameters. This is only useful when the file is accessible using the URIID parameter
Description	Declaration/Consignment/AdditionalDocument/Binary File/Description	Description of the document	The value should be the description of the document and explain what it contains

<i>eTIR field name</i>	<i>Mapping to the XML element (XPATH)</i>	<i>Description</i>	<i>Usage</i>
Size	Declaration/Consignment/AdditionalDocument/Binary File/SizeMeasure	Size of the file	The value should be the size of the file. The unit should be defined in the Measure Unit. Code attribute and should match one of the values listed in the Measurement unit code (UNECE Recommendation 20) <sup>8</sup>
Type	Declaration/Consignment/AdditionalDocument/Binary File/TypeCode	Code of the type of file	
Hash code	Declaration/Consignment/AdditionalDocument/Binary File/HashCode	Hash value of the file	The value should be the hash code string that resulted from hashing the attached file to be used for file reception validation
Hash code algorithm id	Declaration/Consignment/AdditionalDocument/Binary File/HashCodeAlgorithmIDCode	Code of the hash algorithm	The value should be the short name of the algorithm used to compute the hash value of the file
CONSIGNMENTITEM	Declaration/Consignment/ConsignmentItem	List of details on the items in the consignment	
Sequence number	Declaration/Consignment/ConsignmentItem/Sequence Numeric	Index of the consignment item in the list	The value should be the index (1-based) of the consignment in the list, allowing for quick physical identification upon inspection
ADDITIONALINFORMATION	Declaration/Consignment/ConsignmentItem/Additional Information	List of potential additional information at the consignment item level	
Remarks	Declaration/Consignment/ConsignmentItem/Additional Information/Content	Remarks on the consignment item	The value should be a text allowing for additional remarks on the consignment item
GOODS	Declaration/Consignment/ConsignmentItem/Commodity	Class representing the details on the goods	

<sup>8</sup> [www.unece.org/fileadmin/DAM/trans/bcf/eTIR/documents/CodeLists0\\_4.pdf#page=134](http://www.unece.org/fileadmin/DAM/trans/bcf/eTIR/documents/CodeLists0_4.pdf#page=134)



<i>eTIR field name</i>	<i>Mapping to the XML element (XPATH)</i>	<i>Description</i>	<i>Usage</i>
Description	Declaration/Consignment/ConsignmentItem/Commodity/CargoDescription	Description of the goods	The value should be a text describing the goods
CLASSIFICATION	Declaration/Consignment/ConsignmentItem/Commodity/Classification	List of classification details of the goods	
Code	Declaration/Consignment/ConsignmentItem/Commodity/Classification/ID	Code of the classification of the goods	The value should be the code of the non-commercial classification of the goods
CONSIGNEE	Declaration/Consignment/ConsignmentItem/Consignee	Class representing the potential consignee of the goods	
Name	Declaration/Consignment/ConsignmentItem/Consignee/Name	Name of the consignee	The value should be the official company name, or the first and last name of the person in case of physical person, to allow for quick identification
Code	Declaration/Consignment/ConsignmentItem/Consignee/ID	Unique identifier of the consignee	The value should be the unique identifier of the consignee
ADDRESS	Declaration/Consignment/ConsignmentItem/Consignee/Address	Class representing the physical address of the consignee	
City name	Declaration/Consignment/ConsignmentItem/Consignee/Address/CityName	City name of the physical address of the consignee	The value should be the city name of the physical address of the consignee
Country, coded	Declaration/Consignment/ConsignmentItem/Consignee/Address/CountryCode	Code of the country of the physical address of the consignee	The value should be the code of the country of the physical address of the consignee from the list Country name code (ISO 3166-1-alpha-2) ( <a href="http://www.unece.org/fileadmin/DAM/transport/bcf/eTIR/documents/CodeLists_0_4.pdf#page=38">www.unece.org/fileadmin/DAM/transport/bcf/eTIR/documents/CodeLists_0_4.pdf#page=38</a> )
Street and number/P.O. Box	Declaration/Consignment/ConsignmentItem/Consignee/Address	Street name of the physical address of the consignee	The value should be the street name and number (or equivalent)

<i>eTIR field name</i>	<i>Mapping to the XML element (XPath)</i>	<i>Description</i>	<i>Usage</i>
			of the physical address of the consignee
L Postcode identification	Declaration/Consignment/ConsignmentItem/Consignee/Address/PostcodeID	Postal/Zip code of the physical address of the consignee	The value should be the postal/ZIP code of the physical address of the consignee
T CONSIGNOR	Declaration/Consignment/ConsignmentItem/Consignor	Class representing the potential consignor of the goods	
Name	Declaration/Consignment/ConsignmentItem/Consignor/Name	Name of the consignor	The value should be the official company name, or the first and last name of the person in case of physical person, to allow for quick identification
Code	Declaration/Consignment/ConsignmentItem/Consignor/ID	Unique identifier of the consignor	The value should be the unique identifier of the consignor
L ADDRESS	Declaration/Consignment/ConsignmentItem/Consignor/Address	Class representing the physical address of the consignor	
City name	Declaration/Consignment/ConsignmentItem/Consignor/Address/CityName	City name of the physical address of the consignor	The value should be the city name of the physical address of the consignor
Country, coded	Declaration/Consignment/ConsignmentItem/Consignor/Address/CountryCode	Code of the country of the physical address of the consignor	The value should be the code of the country of the physical address of the consignor from the list (Country name code (ISO 3166-1-alpha-2) <sup>9</sup> )
Street and number/P.O. Box	Declaration/Consignment/ConsignmentItem/Consignor/Address/Line	Street name of the physical address of the consignor	The value should be the street name and number (or equivalent) of the physical address of the consignor

<sup>9</sup> [www.unece.org/fileadmin/DAM/trans/bcf/eTIR/documents/CodeLists0\\_4.pdf#page=38](http://www.unece.org/fileadmin/DAM/trans/bcf/eTIR/documents/CodeLists0_4.pdf#page=38)

<i>eTIR field name</i>	<i>Mapping to the XML element (XPATH)</i>	<i>Description</i>	<i>Usage</i>
L Postcode identification	Declaration/Consignment/ConsignmentItem/Consignor/Address/PostcodeID	Postal/Zip code of the physical address of the consignor	The value should be the postal/ZIP code of the physical address of the consignor
DELIVERYDESTINATION	Declaration/Consignment/ConsignmentItem/Delivery Destination	Class representing the potential party to which the goods should be delivered	
Name	Declaration/Consignment/ConsignmentItem/Delivery Destination/Name	Name of the delivery destination	The name of the recipient should be the official company name, or the first and last name of the person in case of physical person, to allow for quick identification.
ADDRESS	Declaration/Consignment/ConsignmentItem/Delivery Destination/Address	Class representing the physical address of the delivery destination	
City name	Declaration/Consignment/ConsignmentItem/Delivery Destination/Address/CityName	City name of the physical address of the delivery destination	The value should be the city name of the physical address of the delivery destination
Country, coded	Declaration/Consignment/ConsignmentItem/Delivery Destination/Address/CountryCode	Code of the country of the physical address of the delivery destination	The value should be the code of the country of the physical address of the delivery destination from the list (Country name code (ISO 3166-1-alpha-2)) <sup>10</sup>
Street and number/P.O. Box	Declaration/Consignment/ConsignmentItem/Delivery Destination/Address/Line	Street name of the physical address of the delivery destination	The value should be the street name and number (or equivalent) of the physical address of the delivery destination
L Postcode identification	Declaration/Consignment/ConsignmentItem/Delivery Destination/Address/PostcodeID	Postal/Zip code of the physical address of the delivery destination	The value should be the postal/ZIP code of the physical address of the delivery destination

<sup>10</sup> [www.unece.org/fileadmin/DAM/trans/bcf/eTIR/documents/CodeLists0\\_4.pdf#page=38](http://www.unece.org/fileadmin/DAM/trans/bcf/eTIR/documents/CodeLists0_4.pdf#page=38)

<i>eTIR field name</i>	<i>Mapping to the XML element (XPath)</i>	<i>Description</i>	<i>Usage</i>
┐ GOODSMEASURE	Declaration/Consignment/ConsignmentItem/GoodsMeasure	Class representing the details on the measures of the goods	
┐┐ Gross weight	Declaration/Consignment/ConsignmentItem/GoodsMeasure/GrossMassMeasure	Total gross weight of the goods	The value should be the weight (mass) of goods including packaging but excluding the transport equipment. The unit should be defined in the Measure Unit. Code attribute and should match one of the values listed in the Measurement unit code (UNECE Recommendation 20) <sup>11</sup>
┐ PACKAGING	Declaration/Consignment/ConsignmentItem/Packaging	Class representing the details on the packaging of the goods	
┐┐ Marks and numbers	Declaration/Consignment/ConsignmentItem/Packaging/MarksNumbersID	Packaging marks and numbers	The value should be a text describing the marks and numbers on a transport unit or package.
┐┐ Number of packages	Declaration/Consignment/ConsignmentItem/Packaging/QuantityQuantity	Number of packages	The value should be the number of individual items packaged in such a way that they cannot be divided without first undoing the packing
┐┐┐ Type, coded	Declaration/Consignment/ConsignmentItem/Packaging/TypeCode	Code of the packaging type	The value should be the code of the type of packaging from the list Package type description code (UNECE Recommendation 21 Annex VI) <sup>12</sup>
┐┐ TRANSPORTEQUIPMENT	Declaration/Consignment/ConsignmentItem/TransportEquipment	Class representing the transport equipment used for the consignment item	

<sup>11</sup> [www.unece.org/fileadmin/DAM/trans/bcf/eTIR/documents/CodeLists0\\_4.pdf#page=134](http://www.unece.org/fileadmin/DAM/trans/bcf/eTIR/documents/CodeLists0_4.pdf#page=134)

<sup>12</sup> [www.unece.org/fileadmin/DAM/trans/bcf/eTIR/documents/CodeLists0\\_4.pdf#page=100](http://www.unece.org/fileadmin/DAM/trans/bcf/eTIR/documents/CodeLists0_4.pdf#page=100)

<i>eTIR field name</i>	<i>Mapping to the XML element (XPATH)</i>	<i>Description</i>	<i>Usage</i>
L Identification	Declaration/Consignment/ConsignmentItem/Transport Equipment/ID	Identifier of the transport equipment	The value should be marks (letters and/or numbers) which identify the transport equipment
L UCR	Declaration/Consignment/ConsignmentItem/UCR	Class representing the Unique Trader Reference	
L Identifier	Declaration/Consignment/ConsignmentItem/UCR/ID	Unique identifier of the goods	The value should be the unique identifier assigned to goods being subject to cross border transactions
T LOADINGLOCATION	Declaration/Consignment/LoadingLocation	Class representing the place of loading of the goods	
L Name	Declaration/Consignment/LoadingLocation/Name	Name of the loading location	The value should be the name of a seaport, airport, freight terminal, rail station or other place at which goods are loaded onto the means of transport being used for their carriage
T NOTIFYPARTY	Declaration/Consignment/NotifyParty	Class representing a potential party to be notified	
T Name	Declaration/Consignment/NotifyParty/Name	Name of the party to be notified	The value should be the name (first and last name or company) of the party to be notified
T Code	Declaration/Consignment/NotifyParty/ID	Unique identifier of the party to be notified	The value should be the unique identifier of the party to be notified
L ADDRESS	Declaration/Consignment/NotifyParty/Address	Class representing the physical address of the party to be notified	
T City name	Declaration/Consignment/NotifyParty/Address/CityName	City name of the physical address of the party to be notified	The value should be the city name of the physical address of the party to be notified
T Country, coded	Declaration/Consignment/NotifyParty/Address/Country Code	Code of the country of the physical address of the party to be notified	The value should be the code of the country of the physical address of the party to be notified from the list

<i>eTIR field name</i>	<i>Mapping to the XML element (XPATH)</i>	<i>Description</i>	<i>Usage</i>
			Country name code (ISO 3166-1-alpha-2) <sup>13</sup>
Street and number/P.O. Box	Declaration/Consignment/NotifyParty/Address/Line	Street name of the physical address of the party to be notified	The value should be the street name and number (or equivalent) of the physical address of the party to be notified
Postcode identification	Declaration/Consignment/NotifyParty/Address/PostcodeID	Postal/Zip code of the physical address of the party to be notified	The value should be the postal/ZIP code of the physical address of the party to be notified
 CUSTOMSOFFICEOFDEPARTURE	Declaration/Consignment/TransitDeparture	Class representing the customs office where the goods are loaded	
Code	Declaration/Consignment/TransitDeparture/ID	Unique identifier of the customs office of departure	The value should be the unique identifier used of the customs of departure, where the goods are loaded. This identifier is the one registered in the International TIR Data Bank (ITDB) for the customs office
 CUSTOMSOFFICEOFDESTINATION	Declaration/Consignment/TransitDestination	Class representing the customs office where the goods are unloaded	
Code	Declaration/Consignment/TransitDestination/ID	Unique identifier of the customs office of destination	The value should be the unique identifier used of the customs of destination, where the goods are unloaded. This identifier is the one registered in the International TIR Data Bank (ITDB) for the customs office
TRANSPORTMEANS	Declaration/Consignment/TransitTransportMeans	List of the means of transport for the consignment	

<sup>13</sup> [www.unece.org/fileadmin/DAM/trans/bcf/eTIR/documents/CodeLists0\\_4.pdf#page=38](http://www.unece.org/fileadmin/DAM/trans/bcf/eTIR/documents/CodeLists0_4.pdf#page=38)

<i>eTIR field name</i>	<i>Mapping to the XML element (XPath)</i>	<i>Description</i>	<i>Usage</i>
Identification	Declaration/Consignment/TransitTransportMeans/ID	Unique identifier of the transport means	The value should be the unique identifier of the means of transport used for the transit
Type, coded	Declaration/Consignment/TransitTransportMeans/Type Code	Code of the means of transport	The value should be the code of the means of transport from the list Transport means description code (UNECE Recommendation 28) <sup>14</sup>
Nationality	Declaration/Consignment/TransitTransportMeans/RegistrationNationalityCode	Nationality of the means of transport	The value should be the code of the country for the nationality of the means of transport from the list Country name code (ISO 3166-1-alpha-2) <sup>15</sup>
Conveyance reference number	Declaration/Consignment/TransitTransportMeans/JourneyID	Unique identifier of the journey	The value should be the unique identifier of the journey of a means of transport (for example voyage number, flight number or trip number)
⊥ COUNTRYOFROUTING	Declaration/Consignment/TransitTransportMeans/Itinerary	List of countries of the itinerary of the consignment	
Sequence number	Declaration/Consignment/TransitTransportMeans/Itinerary/SequenceNumeric	Index of the country in the list	The value should be the index (1-based) of the country in the list representing the itinerary of the consignment
⊥ Country, coded	Declaration/Consignment/TransitTransportMeans/Itinerary/RoutingCountryCode	Code of the country	The value should be the code of the country from the list Country name code (ISO 3166-1-alpha-2)
⊥ TRANSPORTEQUIPMENT	Declaration/Consignment/TransportEquipment	List of the transport equipment used for the consignment	

<sup>14</sup> [www.unece.org/fileadmin/DAM/trans/bcf/eTIR/documents/CodeLists0\\_4.pdf#page=45](http://www.unece.org/fileadmin/DAM/trans/bcf/eTIR/documents/CodeLists0_4.pdf#page=45)

<sup>15</sup> [www.unece.org/fileadmin/DAM/trans/bcf/eTIR/documents/CodeLists0\\_4.pdf#page=38](http://www.unece.org/fileadmin/DAM/trans/bcf/eTIR/documents/CodeLists0_4.pdf#page=38)

<i>eTIR field name</i>	<i>Mapping to the XML element (XPATH)</i>	<i>Description</i>	<i>Usage</i>
Sequence number	Declaration/Consignment/TransportEquipment/SequenceNumeric	Index of the transport equipment in the list	The value should be the index (1-based) of the transport equipment in the list
Size and type identification	Declaration/Consignment/TransportEquipment/CharacteristicCode	Code of the transport equipment	The value should be the code of the transport equipment (specifying its characteristics) from the list Equipment size and type description code (UN/EDIFACT 8155) <sup>16</sup>
Identification	Declaration/Consignment/TransportEquipment/ID	Identifier of the transport equipment	The value should be marks (letters and/or numbers) which identify the transport equipment
CERTIFICATEOFAPPROVAL	Declaration/Consignment/TransportEquipment/AdditionalDocument	Class representing the certificate of approval document of the transport equipment	
Number	Declaration/Consignment/TransportEquipment/AdditionalDocument/ID	Unique identifier of the certificate of approval	The value should be the unique identifier of the certificate of approval
Issuing date	Declaration/Consignment/TransportEquipment/AdditionalDocument/IssueDateTime	Issuing date of the document	The value should be a date to be provided following the EDIFACT 102 format CCYYMMDD (www.unece.org/trade/untdid/d00a/tred/tred2379.htm). For Example: 20200820 represents 20 August 2020.
Type, coded	Declaration/Consignment/TransportEquipment/AdditionalDocument/TypeCode	Code of the type of file	The value should be the code of the type of the document from the list Document name code (UN/EDIFACT 1001) <sup>17</sup>

<sup>16</sup> www.unece.org/fileadmin/DAM/trans/bcf/eTIR/documents/CodeLists0\_4.pdf#page=1

<sup>17</sup> www.unece.org/fileadmin/DAM/trans/bcf/eTIR/documents/CodeLists0\_4.pdf#page=58



<i>eTIR field name</i>	<i>Mapping to the XML element (XPath)</i>	<i>Description</i>	<i>Usage</i>
⊔ BINARYFILE	Declaration/Consignment/TransportEquipment/AdditionalDocument/BinaryFile	The content of the document	
⊔ Identification	Declaration/Consignment/TransportEquipment/AdditionalDocument/BinaryFile/ID	Unique identifier of the file representing the document	The value should be an ID identifying the file and it should be unique among all other binary files of the declaration
⊔ Title	Declaration/Consignment/TransportEquipment/AdditionalDocument/BinaryFile/Title	Title of the document	The value should be the title of the document
⊔ Author name	Declaration/Consignment/TransportEquipment/AdditionalDocument/BinaryFile/AuthorName	Name of the author of the document	The value should be the first and last name of the author of the document
⊔ Version	Declaration/Consignment/TransportEquipment/AdditionalDocument/BinaryFile/VersionID	Version number of the document	The value should be the version of the document
⊔ File name	Declaration/Consignment/TransportEquipment/AdditionalDocument/BinaryFile/FileNametext	File name of the document	The value should be the name of the file representing the document, including the extension
⊔ URI	Declaration/Consignment/TransportEquipment/AdditionalDocument/BinaryFile/URIID	URI of the document	The value should be the Unique Resource Identifier (URI) allowing to access the document instead of relying on a binary object representation
⊔ MIME	Declaration/Consignment/TransportEquipment/AdditionalDocument/BinaryFile/MIMECode	Code of the MIME type of the file	The value should be one of the MIME types as listed by the IANA organization on the page: <a href="http://www.iana.org/assignments/media-types/media-types.xhtml">www.iana.org/assignments/media-types/media-types.xhtml</a>
⊔ Encoding	Declaration/Consignment/TransportEquipment/AdditionalDocument/BinaryFile/EncodingCode	Code of the encoding algorithm of the file	The value should be the type of encoding algorithm used to encode the file
⊔ Character set	Declaration/Consignment/TransportEquipment/AdditionalDocument/BinaryFile/CharacterSetCode	Code of the character set of the file	The value should be the character set used in case the file is a text file

<i>eTIR field name</i>	<i>Mapping to the XML element (XPATH)</i>	<i>Description</i>	<i>Usage</i>
Include binary object	Declaration/Consignment/TransportEquipment/AdditionalDocument/BinaryFile/IncludedBinaryObjectBinaryObject	Binary representation of the file	The value should be the content of the file represented using the characteristics mentioned in the other attributes (EncodingCode and CharacterSetCode)
Access	Declaration/Consignment/TransportEquipment/AdditionalDocument/BinaryFile/Access	Access information of the file	The value should be the information needed to access the file, such as security and download parameters. This is only useful when the file is accessible using the URIID parameter
Description	Declaration/Consignment/TransportEquipment/AdditionalDocument/BinaryFile/Description	Description of the document	The value should be the description of the document and explain what it contains
Size	Declaration/Consignment/TransportEquipment/AdditionalDocument/BinaryFile/SizeMeasure	Size of the file	The value should be the size of the file. The unit should be defined in the Measure Unit. Code attribute and should match one of the values listed in the Measurement unit code (UNECE Recommendation 20) <sup>18</sup>
Type	Declaration/Consignment/TransportEquipment/AdditionalDocument/BinaryFile/TypeCode	Code of the type of file	
Hash code	Declaration/Consignment/TransportEquipment/AdditionalDocument/BinaryFile/HashCode	Hash value of the file	The value should be the hash code string that resulted from hashing the attached file to be used for file reception validation
Hash code algorithm id	Declaration/Consignment/TransportEquipment/AdditionalDocument/BinaryFile/HashCodeAlgorithmIDCode	Code of the hash algorithm	The value should be the short name of the algorithm used to compute the hash value of the file
SEAL	Declaration/Consignment/TransportEquipment/Seal	List of seals affixed to the transport equipment	

<sup>18</sup> [www.unece.org/fileadmin/DAM/trans/bcf/eTIR/documents/CodeLists0\\_4.pdf#page=134](http://www.unece.org/fileadmin/DAM/trans/bcf/eTIR/documents/CodeLists0_4.pdf#page=134)

<i>eTIR field name</i>	<i>Mapping to the XML element (XPATH)</i>	<i>Description</i>	<i>Usage</i>
┆ Sequence number	Declaration/Consignment/TransportEquipment/Seal/SequenceNumeric	Index of the seal in the list	The value should be the index (1-based) of the seal in the list
┆ Seal number	Declaration/Consignment/TransportEquipment/Seal/ID	Unique identifier of the seal	The value should be the unique identifier of the seal affixed to the transport equipment
┆ Seal type code	Declaration/Consignment/TransportEquipment/Seal/TypeCode	Code of the type of seal	The value should be the code of the type of seal from the list Seal type code (eTIR) <sup>19</sup>
┆ GUARANTEE	Declaration/DeclarationGuarantee	Class representing the guarantee of this TIR transport	
┆ Validity	Declaration/DeclarationGuarantee/ExpirationDateTime	Date of expiration of the guarantee	The value should be a date to be provided following the EDIFACT 102 format CCYYMMDD (www.unece.org/trade/untdid/d00a/tred/tred2379.htm). For Example: 20200820 represents 20 August 2020.
┆ Reference	Declaration/DeclarationGuarantee/ReferenceID	Unique identifier of the guarantee	The value should be the unique identifier of the guarantee for this TIR transport
┆ HOLDER	Declaration/Principal	Class representing the TIR Carnet holder (transporter) of this transport	
┆ Name	Declaration/Principal/Name	Name of the TIR Carnet holder	The value should be the official company name, or the first and last name of the person in case of physical person as recorded in the International TIR Data Bank (ITDB), to allow for quick identification

<sup>19</sup> www.unece.org/fileadmin/DAM/trans/bcf/eTIR/documents/CodeLists0\_4.pdf#page=109

<i>eTIR field name</i>	<i>Mapping to the XML element (XPATH)</i>	<i>Description</i>	<i>Usage</i>
┆ Code	Declaration/Principal/ID	Unique identifier of the TIR Carnet holder	The value should be the unique identifier of the TIR Carnet holder as recorded in the International TIR Data Bank (ITDB)
┆ ADDRESS	Declaration/Principal/Address	Class representing the physical address of the TIR Carnet holder	
┆ City name	Declaration/Principal/Address/CityName	City name of the physical address of the TIR Carnet holder	The value should be the city name of the physical address of the TIR Carnet holder
┆ Country, coded	Declaration/Principal/Address/CountryCode	Code of the country of the physical address of the TIR Carnet holder	The value should be the code of the country of the physical address of the TIR Carnet holder from the list Country name code (ISO 3166-1-alpha-2) <sup>20</sup>
┆ Street and number/P.O. Box	Declaration/Principal/Address/Line	Street name of the physical address of the TIR Carnet holder	The value should be the street name and number (or equivalent) of the physical address of the TIR Carnet holder
┆ Postcode identification	Declaration/Principal/Address/PostcodeID	Postal/Zip code of the physical address of the TIR Carnet holder	The value should be the postal/ZIP code of the physical address of the TIR Carnet holder

*Note:* When reading the values of the second columns for both tables, note that the "InterGov/" XML base element has been removed to improve the readability, as it is repeated on every line.

<sup>20</sup> [www.unece.org/fileadmin/DAM/trans/bcf/eTIR/documents/CodeLists0\\_4.pdf#page=38](http://www.unece.org/fileadmin/DAM/trans/bcf/eTIR/documents/CodeLists0_4.pdf#page=38)

#### 4. Referred code lists

17. The following code lists are referred to in the field lists and should be considered when sending the message:

- CL01 - Equipment size and type description code (UN/EDIFACT 8155)
- CL02 - Party role code (UN/EDIFACT 3035)
- CL04 - Country name code (ISO 3166-1-alpha-2)
- CL05 - Transport means description code (UNECE Recommendation 28)
- CL06 - Document name code (UN/EDIFACT 1001)
- CL07 - Package type description code (UNECE Recommendation 21 Annex VI)
- CL08 - Seal type code (eTIR)
- CL14 - Indicator (eTIR)
- CL16 - Message function code (UN/EDIFACT 1225)
- CL17 - Amendment code (eTIR)
- CL26 - Message types (eTIR)

All codes lists are described in the eTIR code lists document.

#### 5. Conditions and Rules

18. The following conditions of the eTIR conditions list are referred to in the field lists and should be considered in the message:

```
C001: IF EXIST( PARTY.code )
THEN NOT EMPTY( PARTY.code )
ELSE NOT EMPTY( PARTY.name , ADDRESS )
```

```
C002: IF ( PACKAGING.Type, coded ) =
"VQ", "VG", "VL", "VY", "VR" OR "VO"
THEN EMPTY( PACKAGING.Number of packages )
ELSE ( PACKAGING.Number of packages ) > 0
```

```
C003: IF( ADVANCE TIR DATA.ADDITIONALINFORMATION.Heavy and
bulky goods indicator ) = 0
THEN NOT EMPTY( TRANSPORTEQUIPMENT )
ELSE EMPTY( TRANSPORTEQUIPMENT )
```

- C004: IFEMPTY( GOODS.CLASSIFICATION ) OR ( GOODS.CLASSIFICATION.Type ) <> 'HS'  
THEN NOT EMPTY( GOODS.Description )

```
C005: IF( ADVANCE TIR DATA.ADDITIONALINFORMATION.Heavy and
bulky goods indicator ) = 0
THEN NOT EMPTY( TRANSPORTMEANS.CERTIFICATEOFAPPROVAL )
ELSE EMPTY( TRANSPORTMEANS.CERTIFICATEOFAPPROVAL )
```

```
C008: IF( MESSAGE.Message function, coded ) = '1'
THEN EMPTY( ADDITIONALINFORMATION, AGENT,AMENDMENT,
SUBCONTRACTOR, CONSIGMENT,GUARANTEE,HOLDER ) AND NOT
EMPTY( MESSAGE.FunctionalReference )
ELSE IF( MESSAGE.Message function, coded ) = '4'
THEN NOT EMPTY( MESSAGE.FunctionalReference, AMENDMENT,
ADDITIONALINFORMATION,
CONSIGMENT,GUARANTEE,HOLDER )
ELSE IF( MESSAGE.Message function, coded ) = '9'
THEN EMPTY( MESSAGE.FunctionalReference, AMENDMENT ) AND NOT EMPTY
(ADDITIONALINFORMATION, CONSIGMENT,GUARANTEE,HOLDER )
```

19. The following rules of the eTIR rules list are referred to in the field lists and should be considered in the message:

- R001: Each country of transit shall have an unique sequence number. They should be numbered from 1 to the number of countries involved in the transit and represent the order in which countries are travelled from departure to destination. In case of multiple means of transport, this will also allow to determine in which order the means of transport are used.
- R003: Re-use a sequence number to indicate that a seal has been replaced.
- R004: Use new sequence number only to mention additional seals.
- R005: Indicate that a seal has been removed and not replaced with an “X” in the “seals number” field of the transport equipment sequence corresponding to the removed seal.
- R008: First occurrence of GOODS.CLASSIFICATION must be of type "HS"

## 6. Example

20. The example below shows the XML data to be sent via POST method to the endpoint URL<sup>21</sup> to record the information related to the beginning of the TIR transport 16FRA3503000051123 related to the guarantee XF95001234. This eGuarantee was issued by the guarantee chain IRU on the date of 2001- 01-01 at the customs office FR0. Note that the holder value is not provided here as this field is not mandatory.

### I7 - Record declaration data request message

```
<?xml version="1.0" encoding="UTF-8"?>
<soap:Envelope xmlns:soap="http://www.w3.org/2003/05/soap-envelope" xmlns:cus="etir:v4.3:customs" xmlns:etir=
"etir:I7:v4.3" xmlns:ds="etir:MetaData_DS:v4.3">
  <soap:Header xmlns:wsa="http://www.w3.org/2005/08/addressing">
    (...)
    <wsa:Action>etir:v4.3:customs/recordDeclarationData</wsa:Action>
    <wsa:MessageID>uuid:8a20af11-8170-432d-9563-6a89b32ef745</wsa:MessageID>
    (...)
  </soap:Header>
  <soap:Body xmlns:wsu="http://docs.oasis-open.org/wss/2004/01/oasis-200401-wss-wssecurity-utility-1.0.xsd" wsu:Id=
"id-da9c5c60-f393-4240-9fd5-54d54fffae83">
    <cus:recordDeclarationData>
      <etir:InterGov>
        <etir:FunctionCode>9</etir:FunctionCode>
        <etir:ID>123456</etir:ID>
        <etir:TypeCode>I7</etir:TypeCode>
        <etir:Declaration>
          <etir:FunctionCode>9</etir:FunctionCode>
          <etir:ID/>
          <etir:TypeCode>E9</etir:TypeCode>
          <etir:IssueDateTime formatCode="208" >20200229094536+0200</etir:IssueDateTime>
          <etir:VersionID>1</etir:VersionID>
          <!--Optional:-->
          <etir:AdditionalInformation>
            <etir:StatementCode>0</etir:StatementCode>
          </etir:AdditionalInformation>
          <!--Optional:-->
          <etir:Agent>
            <ds:ID>ZZZ</ds:ID>
            <ds:RoleCode>R1</ds:RoleCode>
          </etir:Agent>
          <!--Optional:-->
          <etir:Carrier>
```

<sup>21</sup> etir-uat-01.unece.org/etir/v4.3/customs/recordDeclarationData

```

<ds:ID>TU</ds:ID>
</etir:Carrier>
<!--Zero or more repetitions:-->
<etir:Consignment>
  <ds:SequenceNumeric>1</ds:SequenceNumeric>
  <!--Zero or more repetitions:-->
  <ds:AdditionalDocument>
    <ds:ID>attached_document</ds:ID>
    <ds:IssueDateTime formatCode="102" >20190801</ds:IssueDateTime>
    <ds:TypeCode>001</ds:TypeCode>
    <ds:BinaryFile>
      <ds:ID>1</ds:ID>
      <ds:Title>TITLE</ds:Title>
    </ds:BinaryFile>
  </ds:AdditionalDocument>
  <!--1 or more repetitions:-->
  <ds:ConsignmentItem>
    <ds:SequenceNumeric>1</ds:SequenceNumeric>
    <!--Zero or more repetitions:-->
    <ds:AdditionalInformation>
      <ds:Content>Additional information regarding the consignment item</ds:Content>
    </ds:AdditionalInformation>
    <ds:Commodity>
      <!--Optional: TO BE REMOVED-->
      <ds:CargoDescription>GoodsDescription</ds:CargoDescription>
      <!--Zero or more repetitions:-->
      <ds:Classification>
        <ds:ID>C1</ds:ID>
        <ds:IdentificationTypeCode>TY1</ds:IdentificationTypeCode>
      </ds:Classification>
    </ds:Commodity>
    <!--Optional:-->
    <ds:Consignee>
      <ds:ID>CE</ds:ID>
    </ds:Consignee>
    <!--Optional:-->
    <ds:Consignor>
      <ds:ID>CO</ds:ID>
    </ds:Consignor>
    <!--Optional:-->
    <ds:DeliveryDestination>
      <ds:Name>DeliveryDestination</ds:Name>
      <ds:Address>
        <ds:CityName>POITIERS</ds:CityName>
        <ds:CountryCode>FR</ds:CountryCode>
        <ds:Line>RUE DE LA BROUETTE DU VINAIGRIER</ds:Line>
        <ds:PostcodeID>49000</ds:PostcodeID>
      </ds:Address>
    </ds:DeliveryDestination>
    <ds:GoodsMeasure>
      <ds:GrossMassMeasure>123456</ds:GrossMassMeasure>
    </ds:GoodsMeasure>
    <ds:Packaging>
      <ds:TypeCode>V0</ds:TypeCode> <!-- no quantity rule C002 !-->
    </ds:Packaging>
    <!--Optional:-->
    <ds:TransportEquipment>
      <ds:ID>TE1</ds:ID>
    </ds:TransportEquipment>
    <!--Optional:-->
    <ds:UCR>
      <!--Optional:-->
      <ds:ID>UCR</ds:ID>
    </ds:UCR>
  </ds:ConsignmentItem>
  <!--Optional:-->
  <ds>LoadingLocation>

```

```

<!--Optional:-->
  <ds:Name>LoadingLoc</ds:Name>
</ds:LoadingLocation>
<!--Optional:-->
<ds:NotifyParty>
  <ds:ID>NP</ds:ID>
</ds:NotifyParty>
<ds:TransitDeparture>
  <ds:ID>FR0</ds:ID>
</ds:TransitDeparture>
<ds:TransitDestination>
  <ds:ID>FR0</ds:ID>
</ds:TransitDestination>
<!--1 or more repetitions:-->
<ds:TransitTransportMeans>
  <ds:ID>1234</ds:ID>
  <ds:TypeCode>TY1</ds:TypeCode>
  <ds:RegistrationNationalityCode>FR</ds:RegistrationNationalityCode>
  <ds:JoetireyID>JOUR1</ds:JoetireyID>
  <!--1 or more repetitions:-->
  <ds:Itinerary>
    <ds:SequenceNumeric>1</ds:SequenceNumeric>
    <ds:RoutingCountryCode>FR</ds:RoutingCountryCode>
  </ds:Itinerary>
  <ds:Itinerary>
    <ds:SequenceNumeric>2</ds:SequenceNumeric>
    <ds:RoutingCountryCode>FR</ds:RoutingCountryCode>
  </ds:Itinerary>
  <ds:Itinerary>
    <ds:SequenceNumeric>3</ds:SequenceNumeric>
    <ds:RoutingCountryCode>FR</ds:RoutingCountryCode>
  </ds:Itinerary>
</ds:TransitTransportMeans>
<!--Zero or more repetitions:-->
<ds:TransportEquipment>
  <ds:SequenceNumeric>1</ds:SequenceNumeric>
  <ds:CharacteristicCode>CC1</ds:CharacteristicCode>
  <ds:ID>TE1</ds:ID>
  <ds:AdditionalDocument>
    <ds:ID>CoA487321897232741</ds:ID>
    <ds:IssueDateTime formatCode="208" >20210701100342+0300</ds:IssueDateTime>
    <ds:TypeCode>CoA</ds:TypeCode>
    <ds:BinaryFile>
      <ds:ID>1</ds:ID>
      <ds>Title>Certificate of Approval</ds>Title>
    </ds:BinaryFile>
  </ds:AdditionalDocument>
  <!--Zero or more repetitions:-->
  <ds:Seal>
    <ds:SequenceNumeric>1</ds:SequenceNumeric>
    <ds:ID>sealId</ds:ID>
  </ds:Seal>
</ds:TransportEquipment>
</etir:Consignment>
<!--Zero or more repetitions:-->
<etir:DeclarationGuarantee>
  <etir:ReferenceID>XF95001234</etir:ReferenceID>
</etir:DeclarationGuarantee>
<!--Optional:-->
<!--principal mandatory for process even if not in wsdl-->
<etir:Principal>
  <etir:ID>FRA/020/998</etir:ID>
</etir:Principal>
</etir:Declaration>
</etir:InterGov>
</cus:recordDeclarationData>
</soap:Body>
</soap:Envelope>

```

21. Some field original contents have been shortened (...) in this document for the sake of readability, in particular the whole header/security content that is described in the eTIR web services introduction document.