

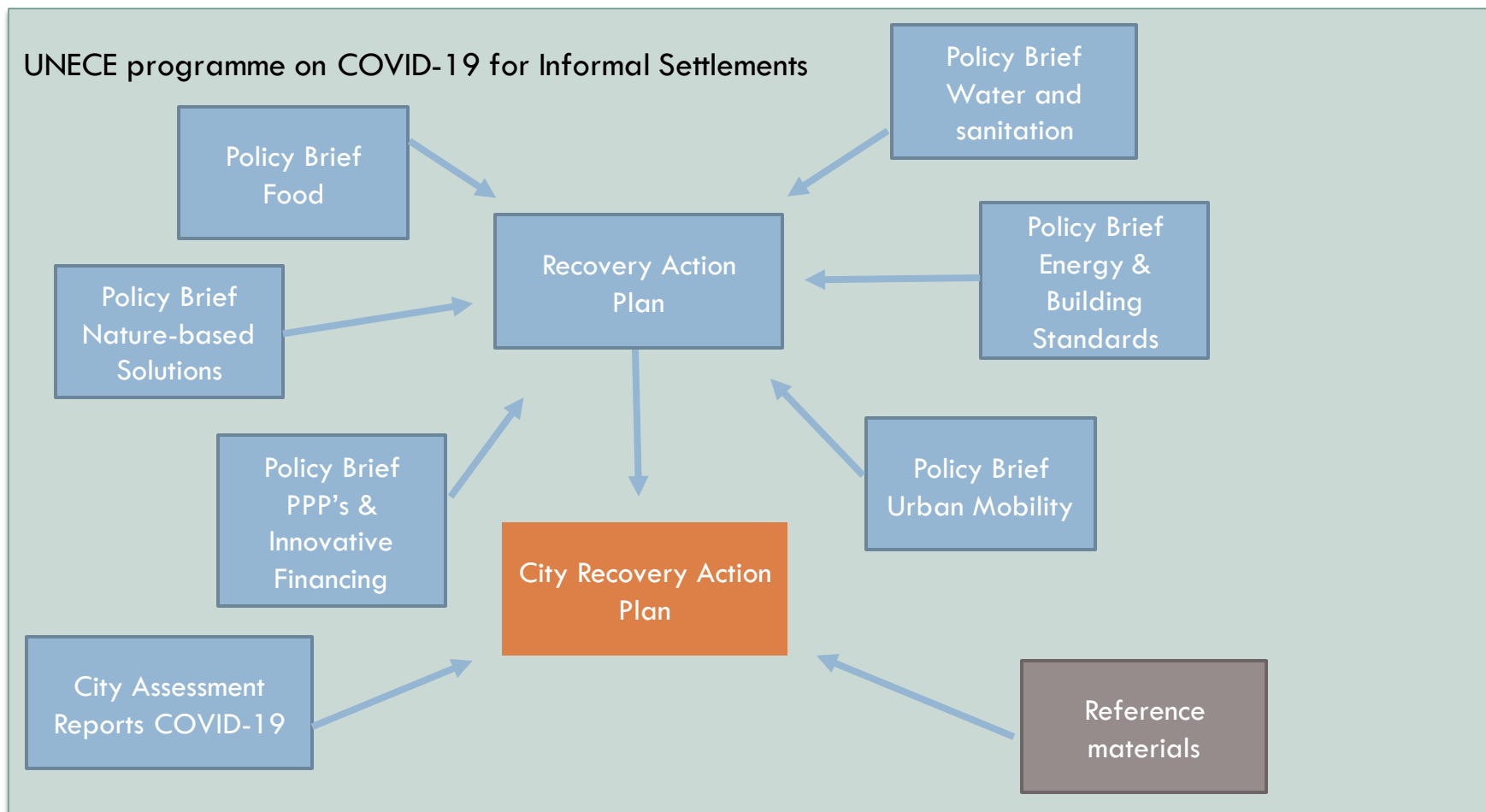
*POST COVID-19 RECOVERY ACTION PLAN FOR INFORMAL
SETTLEMENTS IN THE ECE-REGION
SESSION 1 – POLICY AREA 1, 2, & 3*

*BUILDINGS, CONSTRUCTION & LAND PLANNING, INFRASTRUCTURE, WATER, ENERGY, GREEN SPACES,
RECREATION & SOCIAL EVENTS*

Steven Nystrom, MAI
NewStream Companies - President
FIG Commission 9 Chair 2015-2018
Peace by Prosperity - President
Nystrom@newstreamcompanies.com

*Validation Workshop
2 December 2020*

Post COVID-19 Recovery Action Plan for Informal Settlements in the ECE-Region



POLICY AREA 2

PHYSICAL INFRASTRUCTURE, WATER AND ENERGY SERVICES

NATURAL INFRASTRUCTURE: SOLVING
WATER-ENERGY NEXUS CHALLENGES



Goal 2. The public physical infrastructure, water and sanitation network, and energy grids adequately, sustainably, and equitably support the informal communities.

2.1 The physical road and transportation network is adequate and safe for emergency services, flexible enough to safely accommodate differing modes of travel (mass transit, foot traffic, bicycles, etc. as appropriate), sufficient for economic integration with the formal community and can accommodate pandemic related social distancing.

2.2 There is safe, adequate, and equitable access to clean water, sanitation services, and hygienic infrastructure. Over time, climate resilient water and sanitation as well as energy efficiency measures should be practically applied as economic feasibility is achieved or donor funds fill any resource gaps.

2.3 Adequate energy services are provided to informal settlement residents incorporating affordability, modernity, efficiency, sustainability, renewability, off-grid, and performance standards. This build greater community resilience to pandemic threats, greater equity, economic opportunity, and helps safeguard human rights for societies most vulnerable.



POLICY AREA 3

GREEN SPACES, RECREATION AND SOCIAL EVENTS

Goal 3. Provide for the safe enjoyment of green spaces, recreational and social activities.

3.1 Outdoor recreation, sporting, music events, and social gatherings are safe for everyone.

Sustainable Cities



3.2 Recreational travel, hospitality and tourism services are provided to visitors and residents in a manner that puts no one at undue risk.



GREEN CITIES

to build back better for SDGs
– A new powerful venture



Join us in this call for action!

High-Level Guest Speakers:

- QU Dongyu, *Director-General, FAO*
- Yannick Glemarec, *Executive Director, Green Climate Fund*
- Maimunah Mohd Sharif, *Executive Director, UN-Habitat*
- Jürgen Rigtterink, *Acting President, European Bank for Reconstruction and Development*
- Carlos Manuel Rodriguez, *CEO, Global Environment Facility*
- R my Rioux, *Director-General, Agence Fran aise de D veloppement*

and testimonials from city mayors.
For more info [click here](#)

High-Level event at the 75th Session of the UN General Assembly (UNGA 75)



Friday, 18 September, 2020
12.00–14.00 (GMT-4)

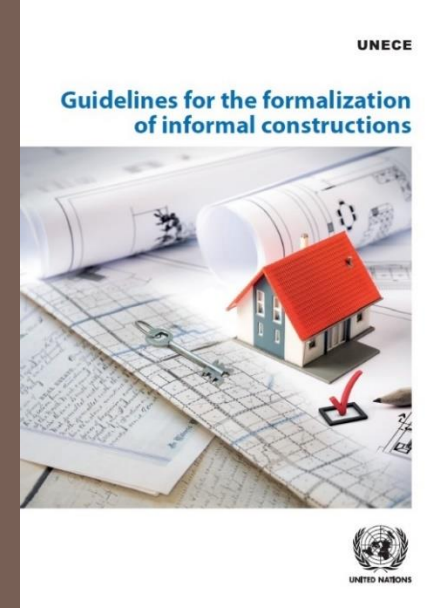


Registration

https://fao.zoom.us/webinar/register/WN_JeD38vZNSPmn44zR6CChw

#UNGA
#GreenCities





POST COVID-19 RECOVERY ACTION PLAN FOR INFORMAL SETTLEMENTS IN THE ECE-REGION

SESSION 2 – POLICY AREA 4, 6, & 7

SERVICES, FOOD, CONSUMPTION & DISTRIBUTION, DATA, TELECOMMUNICATION & INFORMATION TECHNOLOGY

Steven Nystrom, MAI

NewStream Companies - President

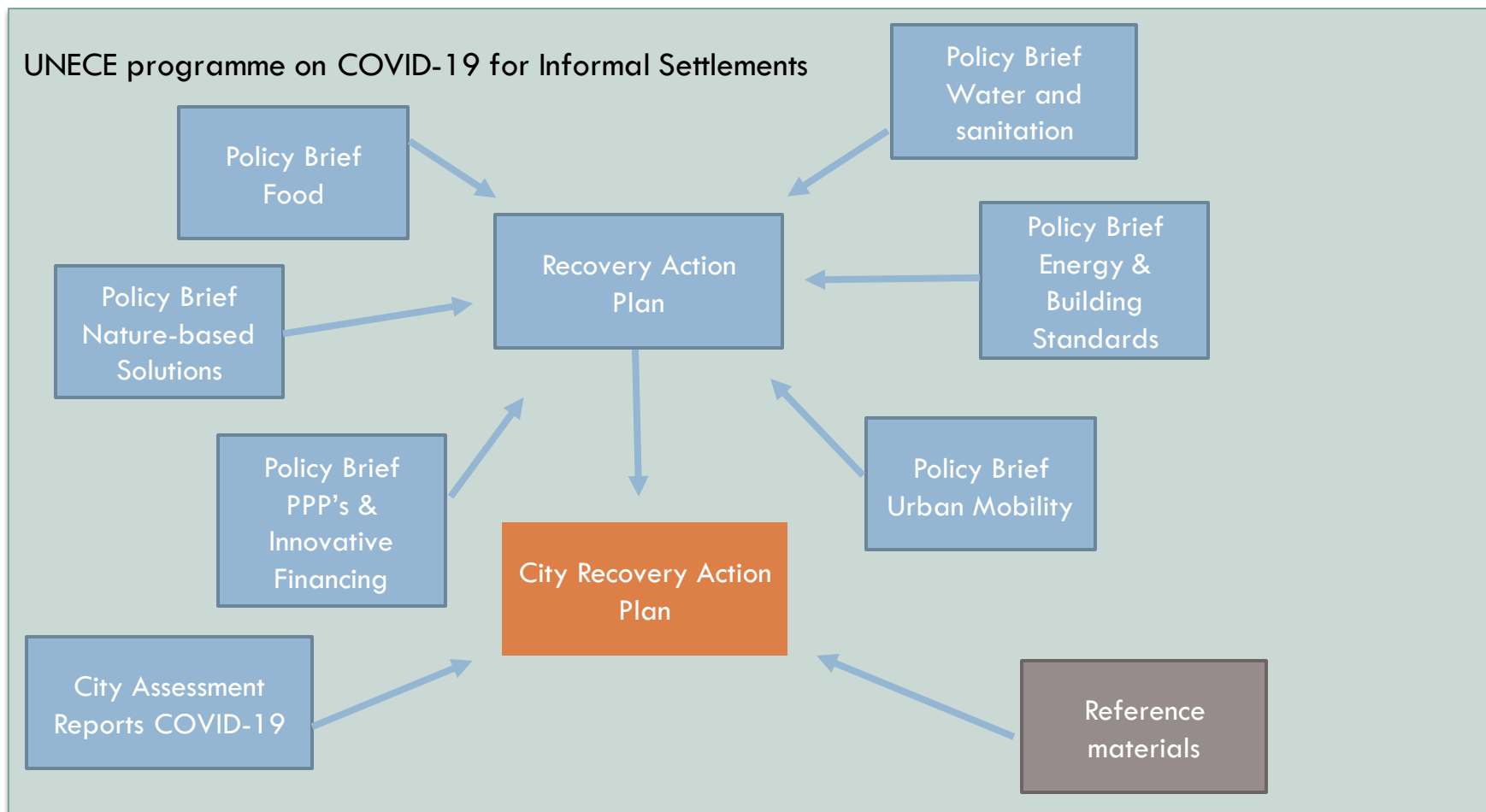
FIG Commission 9 Chair 2015-2018

Peace by Prosperity - President

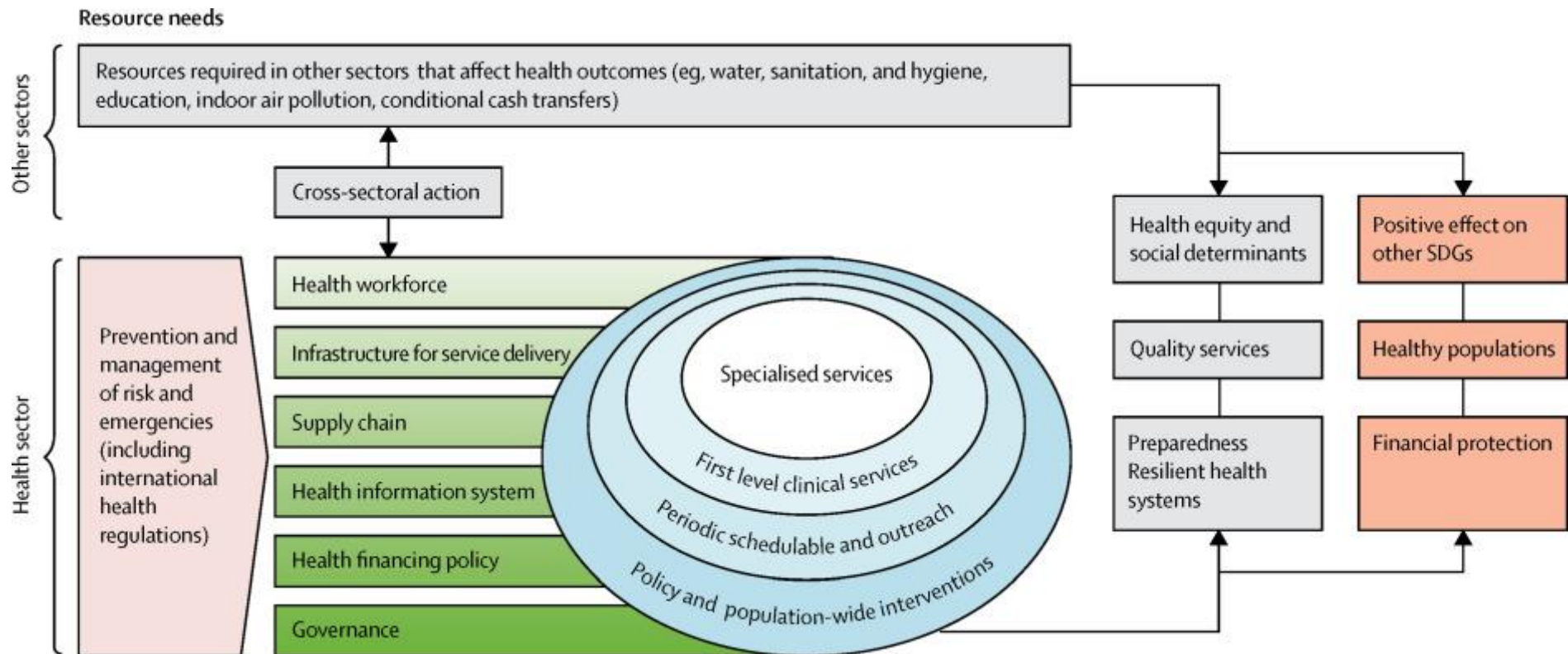
Nystrom@newstreamcompanies.com

Validation Workshop
2 December 2020

Post COVID-19 Recovery Action Plan for Informal Settlements in the ECE-Region



A Round Table Approach looking outward from the Health Sector



The Lancet – Global Health: ARTICLES | VOLUME 5, ISSUE 9, E875-E887, SEPTEMBER 01, 2017





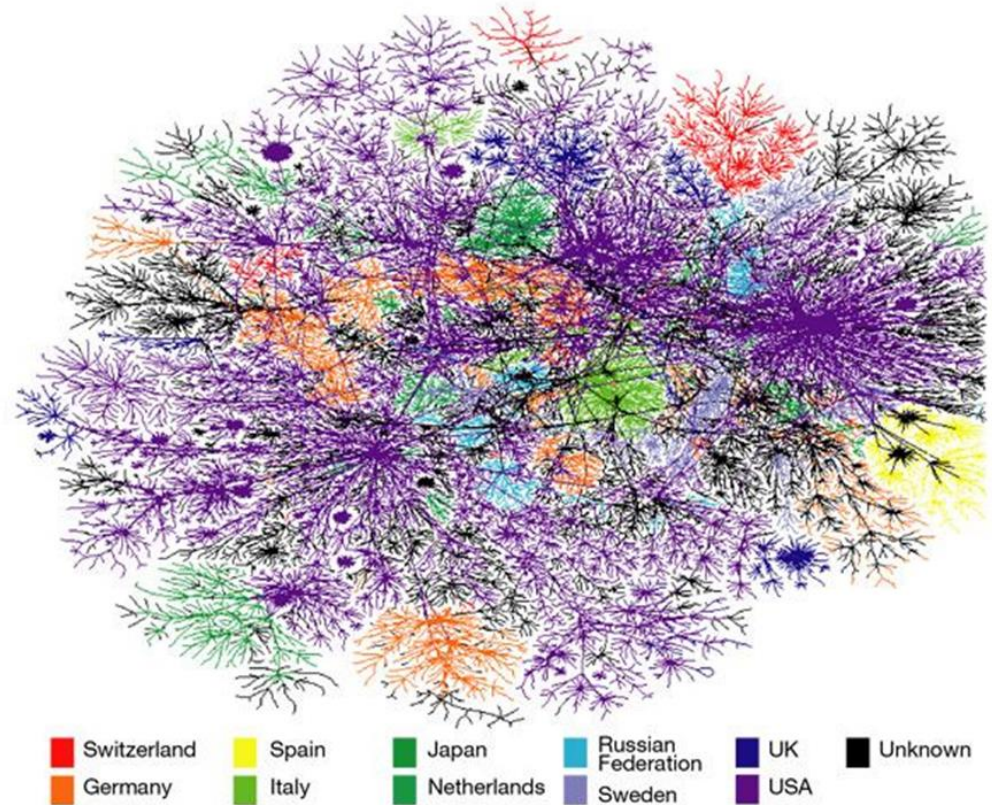
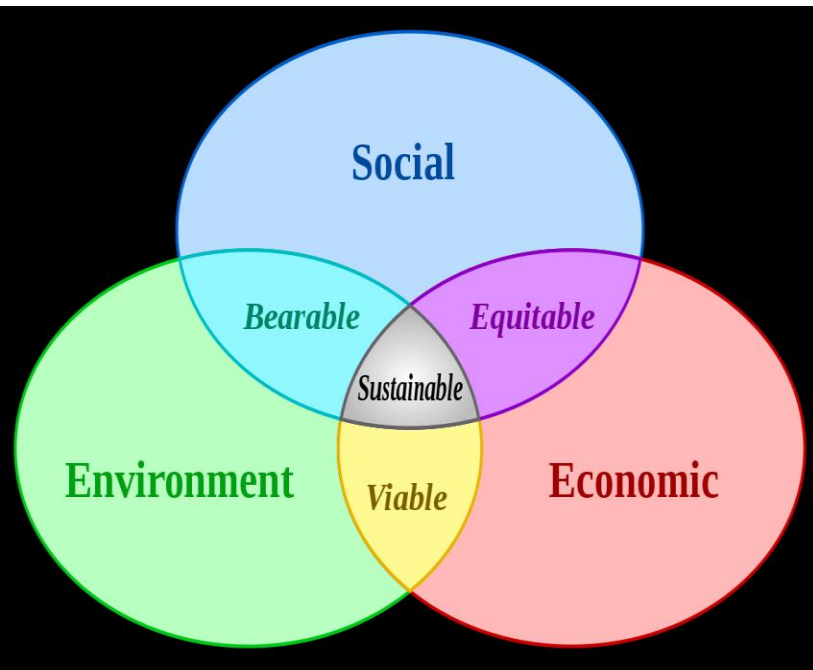
Connectedness of Everything – The socio-natural tapestry threads can be pulled to effect change. When the connections are understood, change is predictable. When predictable, it is also controllable within a set range. Control can overcome almost any obstacle.

P Political	E Economic	S Social	T Technological	E Environmental	L Legal
<ul style="list-style-type: none"> • Government policy • Political stability or instability overseas • Foreign trade policy • Tax policy • Labor laws • Terrorism and military considerations • Environmental laws • Funding grants and initiatives • Trade restrictions • Fiscal policy 	<ul style="list-style-type: none"> • Economic Growth • Interest Rates • Exchange rates • Inflation • Disposable income of consumers • Disposable income of businesses • Taxation • Interstate taxes • Wages rates • Financing capabilities 	<ul style="list-style-type: none"> • Population growth • Age distribution • Health consciousness • Career attitudes • Customer buying trends • Cultural trends • Demographics • Industrial reviews and consumer confidence • Organizational image 	<ul style="list-style-type: none"> • Producing goods and services • Emerging technologies • Technological maturity • Distributing goods and services • Target Market Communication • Potential Copyright infringements • Increased training to use innovation • Potential Return on Investment (ROI) 	<ul style="list-style-type: none"> • The decline of raw materials • Pollution and green house gas emissions • Promoting positive business ethics and sustainability • Reduction of their carbon foot print. • Climate and weather • Environmental Legislation • Geographical location (and accessibility) 	<ul style="list-style-type: none"> • Health & Safety • Equal Opportunities • Advertising Standards • Consumer Rights and laws • Product Labeling • Product Safety • Safety Standards • Labor Laws • Future Legislation • Competitive Legislation

Resistance to Change: Collective desire/Expectation; Natural / Scientific hard limits; National / Political
Versus Growth Economics / Social Interventions: (Overcoming PESTEL Institutional & other Barriers)



Connectedness of Everything – The Threads are all connected



9.4 The institutions underpinning land, labor and capital economics and health-safety concerns are improved to better address pandemic threats and foster economic growth, fairness, and inclusivity.

POLICY AREA 4

SERVICES

(education, public health, social services, emergency services, financial support)



Goal 4. Essential services are supplied to residents safely and adequately, overcoming the challenges of pandemic threat.

4.1 Health service provision is sufficient to meet public need for both typical demand and has adequate expansion capacity in place for pandemic response.

4.2 Emergency service provision is sufficient to meet public need and is scalable for rapid expansion capacity for pandemic threats.

4.3 Appropriate community level health education is accepted at the local level.

4.4 The financial wellbeing of the community is preserved and the pandemic threat to stability is overcome with timely intervention and proper planning.

4.5 The safety, values and culture of the informal settlement residents is maintained without preventable undue loss of life.



POLICY AREA 6

FOOD, BASIC CONSUMPTION & DISTRIBUTION

Goal 6. To ensure the adequate and safe manufacture, and distribution of food, basic consumption goods, and medical supplies.



6.1 Appropriate social distancing measures during a pandemic are followed by those involved in food, medical supplies, and basic goods distribution

6.2 Appropriate social distancing and safety measures are followed by those involved in food and basic goods production

6.3 Minimal corruption, black market profiteering, and critical worker shortages, all of which could hamper both the public and private response to a pandemic crisis

6.4 Local communities & authorities are prepared to deal with labor supply shortages in a pandemic and to support informal settlements residents in an unbiased fashion



POLICY AREA 7

BASIC DATA NEEDS, TELECOMMUNICATIONS & INFORMATION TECHNOLOGY



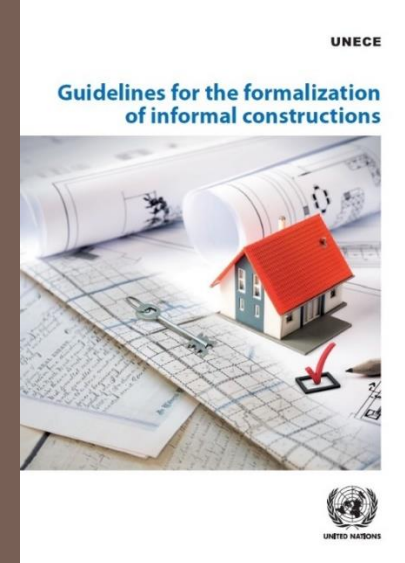
Goal 7. The people are empowered to cope with a pandemic by leveraging and making easily available the relevant information technologies

7.1 Mobile-phone technologies are utilized to their potential to fill the information gaps among residents, provide social contact and as a tool for the dissemination of critical information and governmental instructions.

7.2 The creation of viable decentralized employment and teleworking options while expanding internet service affordably in all informal settlements.

7.3 Informal settlements residents have easy access to education and communication from a variety of electronic sources.





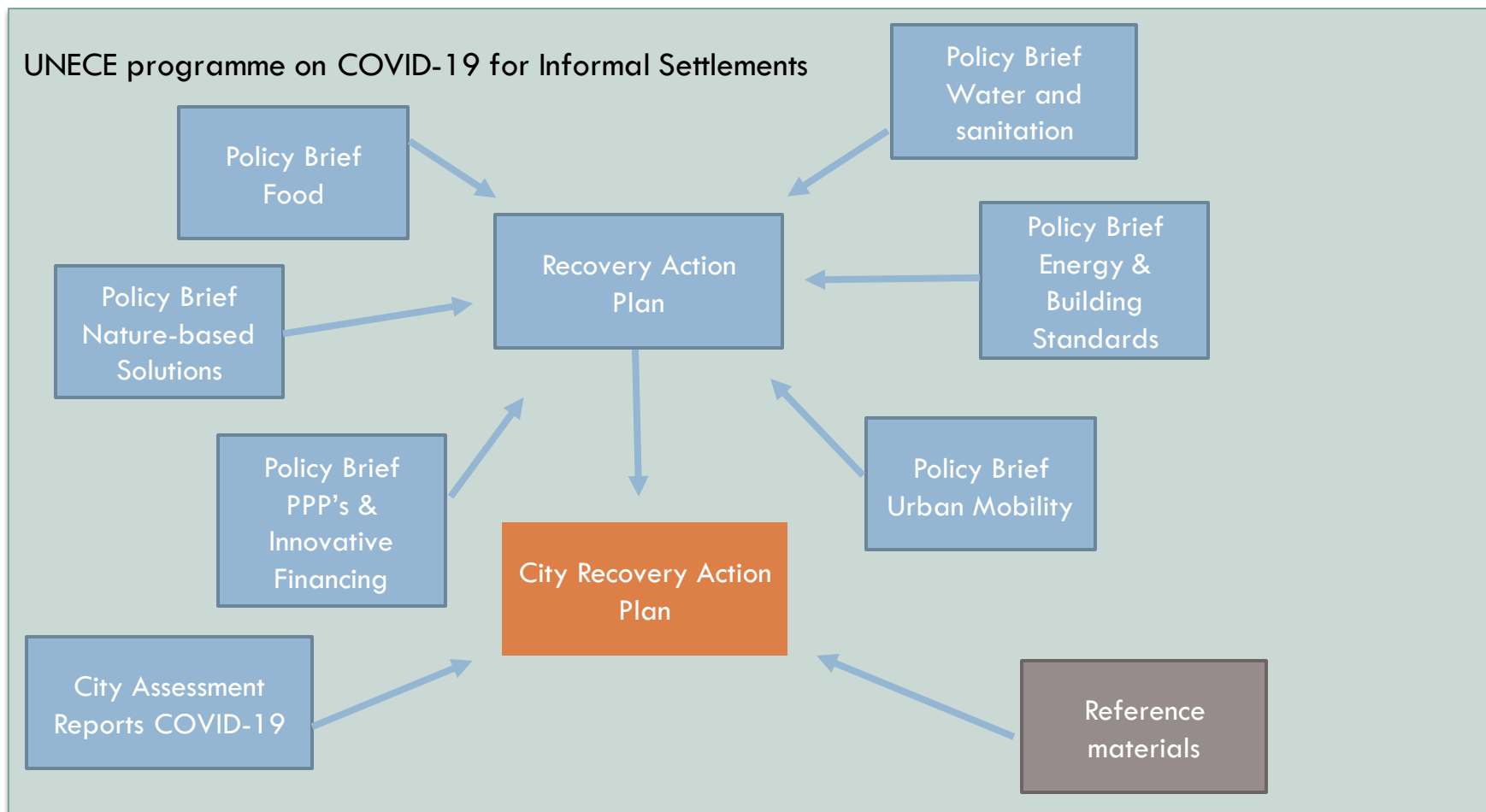
*POST COVID-19 RECOVERY ACTION PLAN FOR INFORMAL
SETTLEMENTS IN THE ECE-REGION
SESSION 3 – POLICY AREA 9, 5, & 8*

*LAND RIGHTS, TENURE & JUSTICE, STAY AT HOME ORDERS & VULNERABLE GROUPS, INVOLVEMENT OF LOCAL
COMMUNITIES / LOCAL ACTION IN INFORMAL SETTLEMENTS*

Steven Nystrom, MAI
NewStream Companies - President
FIG Commission 9 Chair 2015-2018
Peace by Prosperity - President
Nystrom@newstreamcompanies.com

*Validation Workshop
2 December 2020*

Post COVID-19 Recovery Action Plan for Informal Settlements in the ECE-Region



POLICY AREA 5

STAY AT HOME RECOMMENDATIONS, CULTURE, & VULNERABLE GROUPS



Goal 5. To balance stay at home recommendations with the social and economic realities facing the local culture, diverse populations, and vulnerable groups.

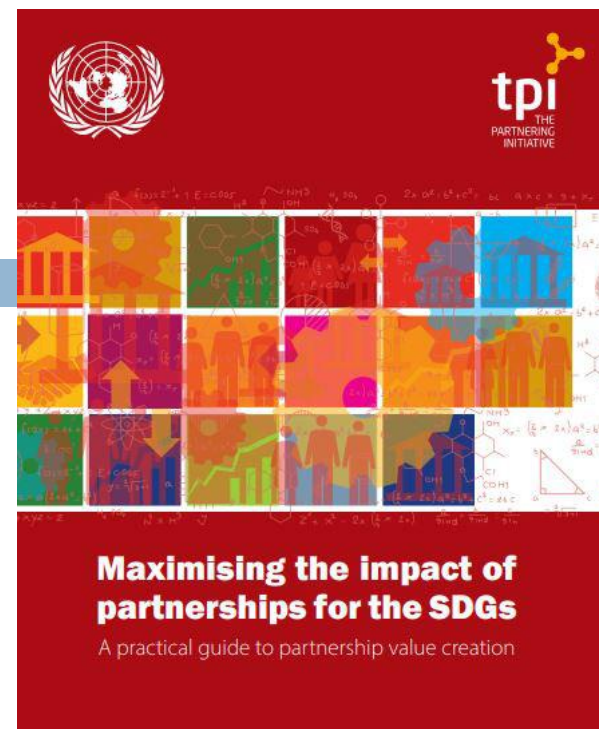
5.1 The cultural and demographic challenges in informal settlements are overcome such that diversity and language barriers in informal settlements do not create an additional hazard to appropriate pandemic response.

5.2 Stigma, bias, prejudice, discrimination, and human rights abuses related to pandemic responses are eradicated in informal settlements and governments increase assistance in the protection of human rights during any health crisis.

5.3 Low-income residents and vulnerable groups are adequately supported such that food and staple goods are provided during peak pandemic periods and they have the support necessary to be able to comply with stay-at-home or quarantine protocols.



ROUND TABLE - CROSS SECTORAL PROBLEM SOLVING



Problem Identification, Preliminary study of the problem dynamics. REALISTIC and unbiased differentiation between symptoms and causes. - DIAGNOSIS

Data gathering, GIS mapping, demographics, medical research, relevant scientific data, cultural and local realities, socioeconomics, resources, political realities. - OUTPUT IS BROAD COMPREHENSIVE DATA

Plan; within your available resources; how to expand resources; for socio-political realities, psychological limitations, realistic timetables of interventions, communication & consensus gathering tools at the appropriate levels. Focus on causes instead of symptoms when possible. - OUTCOME IS A FLEXIBLE STRATEGY





ROUND TABLE - CROSS SECTORAL PROBLEM SOLVING

Communication; Obtaining, & Retaining political & social will; The plan needs to be communicated to various bodies, local communities, professionals, governments, NGO's/stakeholders, possibly scientific bodies, etc. It will need broad and sustained support. Obtaining and retaining both political and social will is critical to world scale problem solving. Solutions often clash with what the people desire, expect, and feel they deserve. They test our faith and can feed mistrust, greed, selfishness, and a host of negative emotions. FLEXIBLIE MESSAGING is key to adapt to a wide variety of audiences. Everyone does not need to be convinced, but most people will.



Balanced & flexible ADAPTATION to changing circumstances. This includes sustaining will, resources & funding; The economic, sociocultural, pure scientific, medical priorities, political will, realistic resource expectations, understanding of sociopsychological limitations (& resilience) factors need to be balanced & flexibly adjusted over time as popular sentiments change. Idealism needs to be tempered with a results-oriented pragmatism if success is to be achieved.

