

Final version

May 2019

UN/CEFACT/1905003



UNITED NATIONS ECONOMIC COMMISSION FOR EUROPE

UNITED NATIONS CENTRE FOR TRADE FACILITATION
AND ELECTRONIC BUSINESS (UN/CEFACT)

**BUSINESS REQUIREMENTS SPECIFICATION
(BRS)**

Business domain: Certification

Business process: Certificate of conformance

Document identification: UN/CEFACT/eQuality/2019

Title: eQuality Certificate

UN/CEFACT International Trade and Business Domain: Agriculture

Version: 1.0

Contents

<i>Change Log</i>	3
1 BRS EQUALITY	4
1.1 PREAMBLE	4
1.2 REFERENCES	4
1.3 OBJECTIVE	5
1.4 SCOPE	5
1.5 CONTEXTS.....	6
2 BUSINESS REQUIREMENTS ELABORATION	7
2.1 BUSINESS REQUIREMENTS LISTS.....	7
2.2 DEFINITIONS BUSINESS TERMS	8
2.3 BUSINESS REQUIREMENTS VIEW	8
2.3.1 <i>Business Domain View</i>	8
2.3.2 <i>Business Process Activity Diagram</i>	10
2.3.3 <i>Business Partners View – Participants and Stakeholders</i>	12
2.3.4 <i>Class diagram</i>	12
2.4 BUSINESS INFORMATION ENTITIES	14
APPENDIX 1: MAPPING DOCUMENT EQUALITY CERTIFICATE	26
APPENDIX 2: EXAMPLE OF A PAPER CERTIFICATE	32

Document History

Phase	Status	Date Last Modified
Initial	concept	18 th July 2018
Expert meeting in The Netherlands	0.2	26 th September 2018
UNCEFACT Forum	0.3	11 th November 2018
Harmonisation with CCL	0.4	23 rd January 2019
Harmonisation with CCL	1.0	18 th of March 2019

Figure 1 – Document History

Change Log

The change log is designed to alert users about significant changes that occurred during the development of the BRS instance.

Date of Change	Version	Paragraph Changed	Summary of Changes
26 th September 2018	0.2		Correction of all diagrams Add ABIE Role and ABIE Certificate Limited scope to exchange of quality certificate Add BBIE's unit. Type quantity under Trade Line Item and inspection status and status under Inspection Event
11 th November	0.3	2.2 2.4	Definition of consignment changed Removed
23 rd January	0.4	2.3.4	Harmonisation with BSP Reference Model Datamodel changed a.o: delete ABIE Role, change Inspection_Event into Supply Chain_Event, add Trade_Product, add Supply Chain_Consignment, add prefixes for several ABIE's Add 2 Appendixes
18 th March	1.0	2.3.4 2.4	Introduced Trade_Country Sub-Division, Datamodel finalized Added overview of business information entities

Figure 2 - Document Change Log

1 BRS eQuality

The eQuality certificate is a unique document that issued by an authority, which states that the product meets certain qualification criteria. The document is signed and uniquely marked by the issuing authority.

1.1 Preamble

The current practice of the exchange of conformity certificates associated with the import of agricultural commodities represents a major opportunity to improve the integrity and business processes of importing border authorities.

The trade of agricultural commodities is highly regulated by governments to protect human, animal and plant health and consumer interests. The importing authority sets quality standards for commodities (products) crossing their border and requires certification issued by the recognised competent export inspection body to verify compliance to bilaterally agreed requirements and quality standards. The inspection body of the importing country may decide, after a risk analysis, to repeat the conformity inspection for a second opinion.

At present conformity certificates are paper documents accompanying the consignment. Therefore this document seeks to initiate the process to standardise the data elements and message structure to facilitate global implementation of electronic exchange of conformity certificates.

The outputs will be the harmonized XML schemas to support the information exchange for the business process.

The structure of this document is based on the structure of the UN/CEFACT Business Requirements Specification (BRS) document reference.

1.2 References

The list of specifications that have substantially influenced the development of the business requirements specification document, including formal standards from UN/CEFACT, OECD and other standards bodies, international treaties or agreements, industry sector and institutional specifications:

- *UN/CEFACT Modelling Methodology User Guide (CEFACT/TMG/N093)*
- *UN/CEFACT Business Requirement Specification Document Template (CEFACT/ICG/005)*
- *UN/CEFACT E-CERT BRS*
- *ECE certificate based on the OECD conformity certificate:*
<http://www.unece.org/trade/agr/aboutus.html>
- *EU certificate – page 115 in Annex III to EU Regulation No 543/2011.*
<http://eur-lex.europa.eu/legal-content/EN/TXT/PDF/?uri=CELEX:32011R0543&from=en>

1.3 Objective

The objective of this document is to propose a standard for the Business Processes, the Business Transactions and the Information Entities used in the process of exchanging data on product quality conformity certification.

The Business process is the detailed description of the way participants intend to play their respective roles, establish business relations and share responsibilities to interact efficiently with the support of their respective information systems. Each Business transaction is realized by an exchange of messages. The context and sequence in which these messages are used is presented as use cases in the document.

The business documents are composed of Business Information Entities (BIE), which when available, are taken from the library of reusable business information entities and when not found, are proposed as new Business Information Entities. The contents of the business documents and the Business Information Entities are presented using class diagrams.

1.4 Scope

The objective of this project is to standardise the business processes, the business transactions and the information entities of the electronic issuing and exchange of the eQuality certificate along the supply chain.

The project will describe the business process for the electronic exchange of:

- Data involved in the process of issuing an electronic quality certificate between the producer / trader and the issuing authority
- The electronic exchange of the eQuality certificate along the supply chain.

The project will focus on the eQuality certificate for agricultural products, both of plant and animal origin.

The supply chain consist of all parties involved from farmer – fisherman, including cooperatives and producer organisations, packers and traders, processors up to the retailers, including the service providers and authorities.

The data involved in the request eQuality certification message contains:

- Information about the product (type, purpose, quantity, quality, identification) , production process, location, party and purpose of the certificate (ie. export to country X)

The eQuality certificate contains data about the related product and the administrative data of the certificate, (date of issue, inspection, etc; the certificate ID, inspector and an electronic signature of the authority.) The relation between the physical product instance and the assigned eQuality certificate for this product instance will be maintained along the lifecycle of the product instance.

The certificate is used by the producer / trader to prove the product qualifications in case of export or for other business processes. The certificate is used by the export control authority and by the (international) trade partners.

1.5 Contexts

Context Category	Description
Business Process	Process of issuance and exchange of product quality conformity certificate
Product Classification	Conformity certificates
Industry Classification	All sectors (agricultural and others) involved in trade in products from animal or plant origin
Geopolitical	Global
Official Constraints	International Regulations National regulations Local applicable regulations
Business Process Role	Customs, importer, exporter, transporter, inspection body, control authority
Supporting Role	None
System Capabilities	Agreed level of security to protect data integrity Preferably a single windows implementation Database applications with uniquely identified electronic certificates with a system of authorizations and keys for retrieving information.

Figure 3 – Context Categories

2 Business Requirements Elaboration

2.1 Business Requirements Lists

The business requirements and key business information is presented in the list below,

Number	Business Requirement Statement
A.1	Quality conformance data messages must use existing standards and methods allowing to provide information
A.2	A consignment contains one or more trade line items
A.3	The trade line items in the consignment contain one or more products from plant or animal origin.
A.4	The consignment is exported from one country and imported in another country
A.5	The inspection authority can take on the role of the competent inspection body, or can delegate inspection tasks to a competent inspection body.
A.6	The competent inspection body has a database with eQuality certificates
A.7	eQuality certificates are uniquely identified with a code
A.8	The competent inspection body export informs the competent inspection body import by sending a message with all conformity information available
A.9	The competent inspection body can verify the validity of an eQuality certificate in the database of another competent inspection body.
A.10	The eQuality certificate of the exporting country can be approved, rejected, updated, reissued or renewed by the competent inspection body of the importing country
A.11	The parties involved (exporter, transporter, importer, customs) are informed of the eQuality certificate ID and other relevant information (means of transport, container no., time and date of arrival, location of unloading, etc)
A.12	Interoperability between different systems
A.13	Independent of type of product and national and / or geographical locations

Figure 4 – Business Requirement List

Number	Data Domains
B1	Exchanged certificate
B2	Consignment
B3	Product

Figure 5 – Data Domains

2.2 Definitions Business Terms

The names and definitions of business terms used in the requirements specification are listed below:

Product	Any tangible output or service produced by human or mechanical effort or by a natural process.
Consignment	A separately identifiable collection of goods items to be transported or available to be transported from one consignor to one consignee via one or more modes of transport where each consignment is the subject of one single transport contract.
Trade line item	A collection of information specific to an item being used or reported on for trade purposes.
Party	An identified person, organization or authority.
Location	An identified geographical point or area where goods are loaded, unloaded or inspected.
Document	A collection of data for a piece of written, printed or electronic matter that provides information or evidence.
Quality certificate	Quality certificates or certificates of conformity may be issued by a competent authority to confirm that the products concerned conform to the relevant marketing standard
Conformity check	A conformity check is made by assessing samples taken at random from different points in the lot to be controlled. It is based on the assumption that the quality of the samples is representative of the quality of the lot.

Figure 6 – Sample Definitions of Terms

2.3 Business Requirements View

An outline description of the artefacts that form part of the BRS are given below and are described using the UMM terminology.

2.3.1 Business Domain View

The business processes that are included in the Business Domain are identified and classified in this view.

The Business Domain view is represented by two Use Case Diagrams.

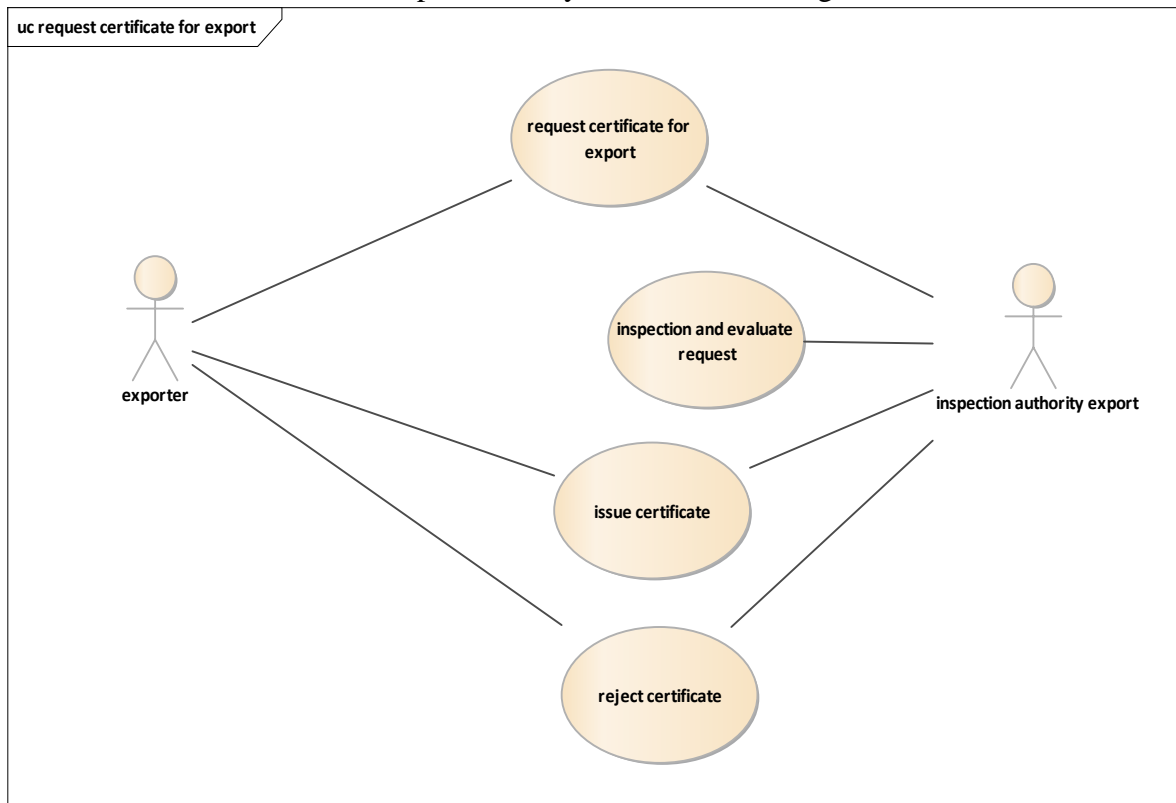


Figure 7 - Business Domain Use Case Diagram 1 - Business Process 'Request for eQCert'

The request process of the certificate in use case 1 is not in scope. Only the issuance of the certificate is in scope.

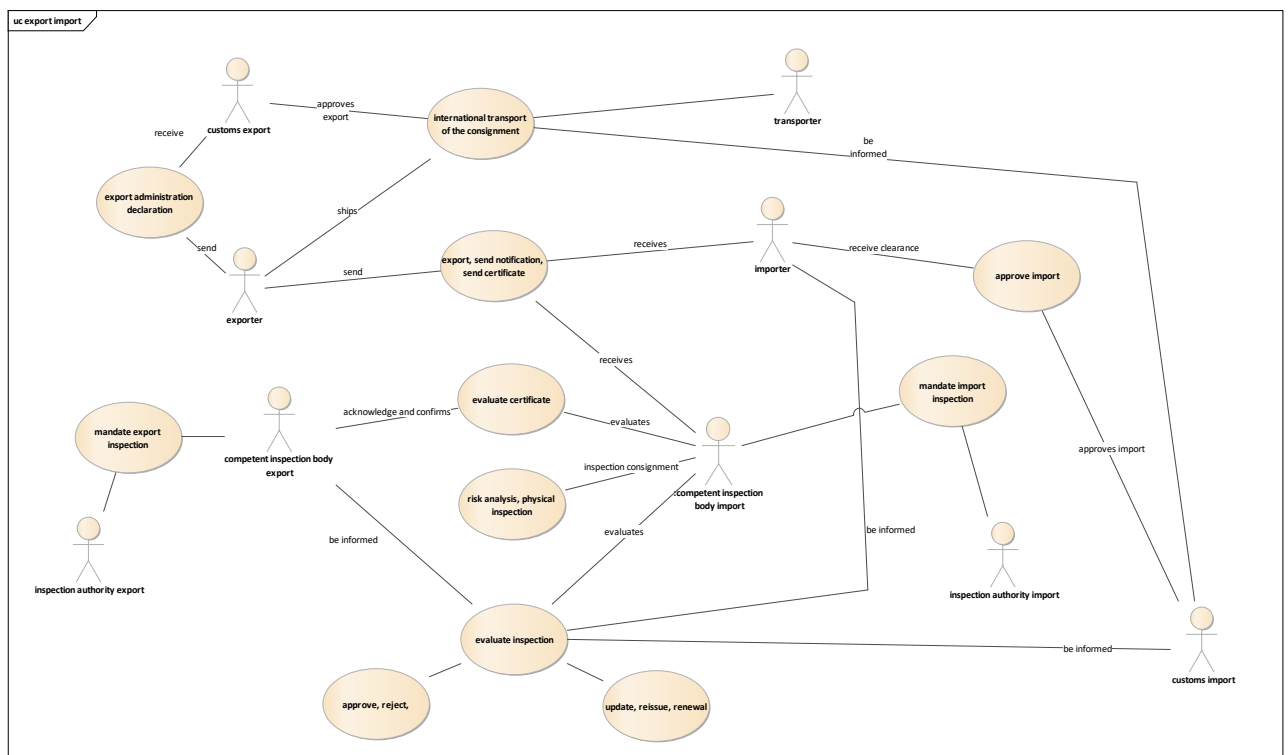


Figure 8 - Business Domain Use Case Diagram 2 - Business Process ‘eQCert information exchange in export and import processes’

2.3.2 Business Process Activity Diagram

A Business Process Activity Diagram is used to model the dynamics of each business process, to depict a collaborative process involving the Business Partners and to denote important states of business entities that are manipulated during the execution of a business process.

In the list below some activities are optional or may slightly differ in different countries.

Steps that are in scope of the eQuality standard are highlighted.

List of activities in eQuality certification

The Inspection authority can delegate inspection tasks to a Competent inspection body (optional)	Delegate inspection tasks
The Exporter initiates the certification process by requesting a conformity certificate for a consignment from the Competent inspection body export.	Request for certification
The Competent inspection body export issues the certificate after inspection.	Issue eQCert
The Competent inspection body export informs the exporter of the conformity certificate.	Inform about eQCert
The Exporter informs the Transporter that the goods are ready for transport.	Inform about eQCert
The Exporter sends all export documents for the consignment to Customs export.	Export administration declaration
Customs export gives the Exporter clearance for export of the consignment.	Clearance for departure
Transporter informs Importer of arrival of the consignment.	Notification of arrival
Transporter informs Customs import of the estimated date and time arrival of the consignment.	Pre notification of arrival
Exporter informs Importer that goods are being transported.	Notification of transport, eQCert
Importer informs Customs import of the estimated date and time arrival of the consignment.	Pre notification of arrival
Customs informs Competent inspection body import of arrival of the consignment.	Notification of arrival
Competent inspection body import verifies the eQCert at Competent inspection body export	Verification eQCert
Competent inspection body export acknowledges the validity of the eQCert	Acknowledgement validity eQCert
Competent inspection body import does a risk analysis and decides about inspection. Competent inspection body import accepts, rejects, updates or renews the eQCert and informs the Competent inspection body export about the result.	Inform inspection result
Competent inspection body import accepts, rejects, updates or renews the eQCert and informs the Customs import about the result.	Inform inspection result

Competent inspection body import accepts, rejects, updates or renews the eQCert and informs the Importer about the result.	Inform inspection result
For updates or renewals of the eQCertificate a new certificate is issued and the previous one(s) are attached as referenced documents.	Inform about new eQCert, add previous eQCert as Referenced Document
Importer asks Customs import clearance for import of the consignment	Request for clearance import

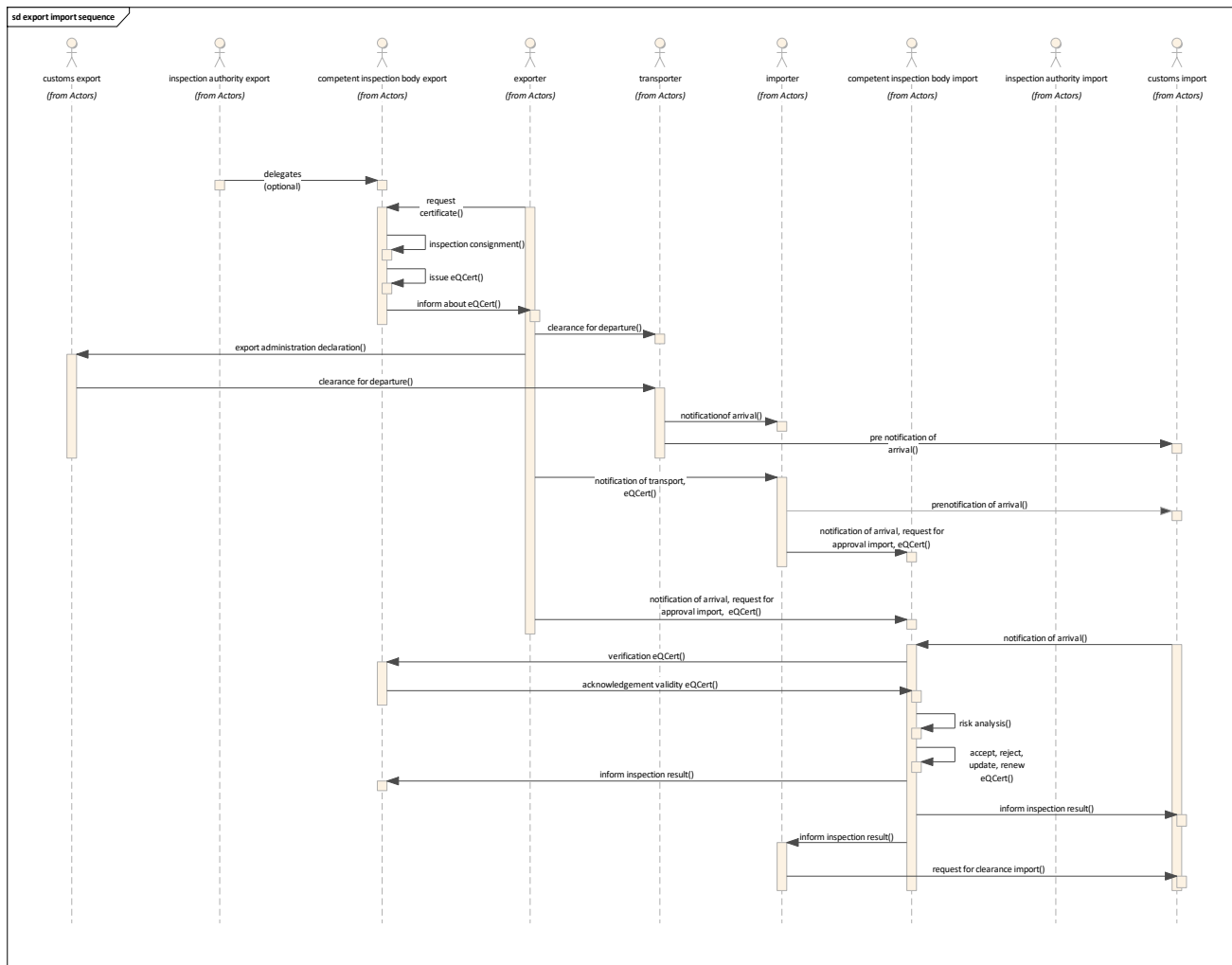


Figure 9 – Business Process Activity Diagram

*Only activity steps with eQCert are in scope

Any change in an eQCert has to result in the issuance of a new eQCert with the previous one(s) as Referenced Document.

2.3.3 Business Partners View – Participants and Stakeholders

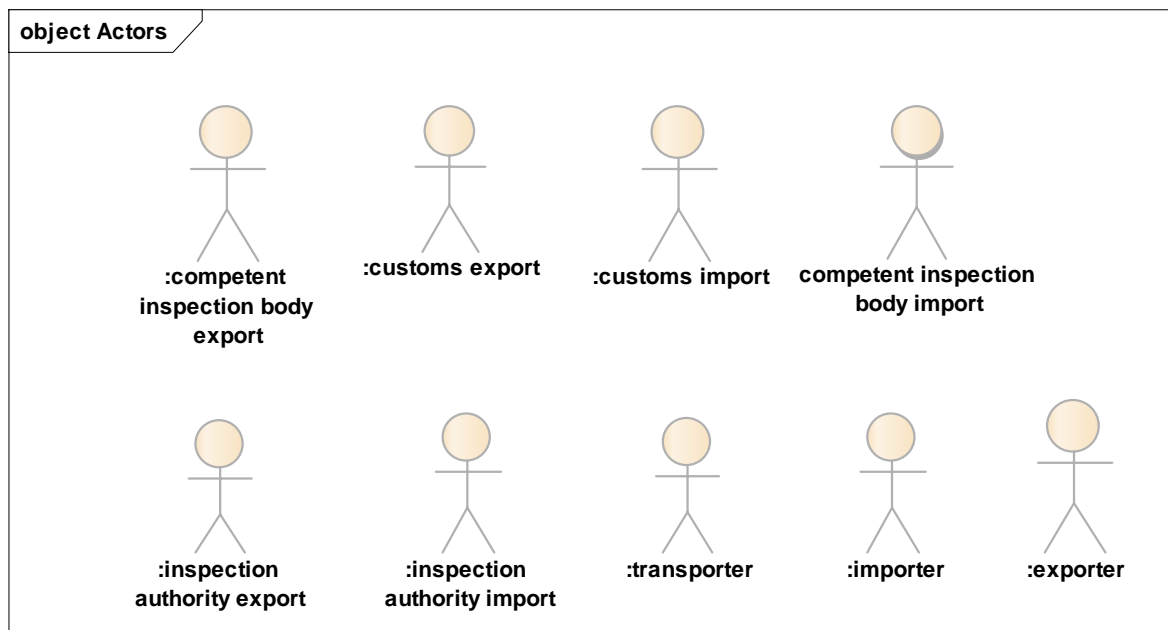


Figure 10 – Business Partner View Use Case Diagram

2.3.4 Class diagram

This model represents the set of data for the electronic exchange of eQuality information.

Figure 12 – Class diagram eQuality

2.4 Business information entities

Exchanged_Document

Description: A collection of data for a piece of written, printed or electronic matter that is exchanged between two or more parties.

Mult.	Business term	Rel.	Type	Description
[1]	Identification	Att.	Identifier	The unique identifier of this exchanged document.
[0..1]	Name	Att.	Text	The name, expressed as text, of this exchanged document.
[0..1]	Description	Att.	Text	The textual description of this exchanged document.
[0..1]	Type	Att.	Code	The code specifying the type of exchanged document.
[0..1]	Status	Att.	Code	The code specifying the status of this exchanged document.
[1]	Issue	Att.	Date Time	The date, time, date time, or other date time value of the issuance of this exchanged document.
[0..1]	Copy	Att.	Indicator	The indication of whether or not this exchanged document is a copy.
[0..1]	Cancellation	Att.	Date time	The date, time, date time, or other date time value of the cancellation of this exchanged document.

Mult.	Association	Description
[0..*]	Exchanged_Document. Included. Note	A note included in this exchanged document
[0..*]	Exchanged_Document. Reference. Referenced_Document	Other documents referenced by this exchanged document.
[0..*]	Exchanged_Document. Signatory. Authentication	A signatory document authentication for this exchanged document.
[0..1]	Exchanged_Document. Issue. Logistics_Location	The location where this exchanged document has been issued.
[1]	Exchanged_Document . Issuer. Trade_Party	The party that issues this exchanged document.

Note

Description: A textual or coded description, such as a remark or additional information.

Mult.	Business term	Rel.	Type	Description
[0..1]	Subject	Att.	Text	The subject, expressed as text, of this note.
[0..*]	Content	Att.	Code	A code specifying the content of this note.
[0..1]	Content	Att.	Text	The content, expressed as text, of this note.
[0..*]	Subject	Att.	Code	A code specifying the subject of this note.
[0..1]	Identification	Att.	Identifier	The unique identifier for this note.

Supply Chain Consignment

Description: A separately identifiable collection of goods items to be transported or available to be transported from one consignor to one consignee via one or more modes of transport where each consignment is the subject of one single transport contract.

Mult.	Business term	Rel.	Type	Description
[0..1]	Identification	Att.	Identifier	The unique identifier for this supply chain consignment.
[0..1]	Availability due	Att.	Date time	The date, time, date time, or other date time value when this supply chain consignment is due to be available.
[0..1]	Export exit	Att.	Date Time	The date, time, date time or other date time value when this supply chain consignment will exit, or has exited from the last port, airport, or border post of the country of export.
[0..1]	Ship stores	Att.	Indicator	The indication of whether or not this supply chain consignment is for ship stores, such as for consumption on the means of transport.

Mult.	Association	Description
[0..1]	Supply Chain_Consignment. Consignee receipt. Logistics_Location	The location at which this supply chain consignment will be or has been received by the consignee.
[0..*]	Supply Chain_Consignment. Transit.	The transit location for this supply chain

	Logistics_Location	consignment.
[1..*]	Supply Chain_ Consignment. Included. Supply Chain_ Consignment Item	A supply chain consignment item included in this supply chain consignment.
[0..*]	Supply Chain_ Consignment. Main Carriage. Transport movement	A main carriage transport movement for this supply chain consignment.
[0..*]	Supply Chain_ Consignment. Transit. Trade_ Country	A transit country for this supply chain consignment.
[1]	Supply Chain_ Consignment. Import. Trade_ Country	The import country for this supply chain consignment.
[1]	Supply Chain_ Consignment. Export. Trade_ Country	The export country for this supply chain consignment.
[0..*]	Supply Chain_ Consignment. Re-Export. Trade_ Country	A re-export country for this supply chain consignment.
[0..*]	Supply Chain_ Consignment. Associated. Trade_ Party	A trade party associated with this supply chain consignment.
[0..1]	Supply Chain_ Consignment. Unloading. Logistics_ Location	The logistics location where the supply chain consignment is unloaded.
[0..1]	Supply Chain_ Consignment. Loading. Logistics_ Location	The logistics location where the supply chain consignment is loaded.

Supply Chain_ Consignment Item

Description: An item within a supply chain consignment of goods separately identified for transport and customs purposes.

Mult.	Business term	Rel.	Type	Description
[0..1]	Identification.	Att.	Identifier	The unique identifier for this supply chain consignment item.

Mult.	Association	Description
[1..*]	Supply Chain_ Consignment Item. Included. Supply Chain_ Trade Line Item	A trade line item included in this supply chain consignment item.

Trade_Party

Description: An individual, group, or body having a role in a trade business function.

Mult.	Business term	Rel.	Type	Description
[0..1]	Identification	Att.	Identifier	The unique identifier for this trade party.
[0..*]	Type	Att.	Code	A code specifying the type of trade party that is independent of its role.

[0..1]	Name	Att.	Text	The name expressed as text for this trade party.
[0..1]	Role	Att.	Code	The code specifying the role of this trade party.
[0..*]	Role	Att.	Text	A role, expressed as text, for this trade party.

Mult.	Association	Description
[0..1]	Trade_Party. Specified. Address	The postal address for this trade party
[0..1]	Trade_ Party. Specified. Authoritative Signatory_ Person	The person specified to sign on behalf of this trade party

Trade_Address

Description: The location at which a particular trade related organization or person may be found or reached.

Mult.	Business term	Rel.	Type	Description
[0..1]	Postcode	Att.	Code	The code specifying the postcode in the address.
[0..1]	Line One	Att.	Text	The first free form line, expressed as text, of the address.
[0..1]	Line Two	Att.	Text	The second free form line, expressed as text, of the address.
[0..1]	Line Three	Att.	Text	The third free form line, expressed as text, of the address.
[0..1]	Line Four	Att.	Text	The fourth free form line, expressed as text, of the address.
[0..1]	Line Five	Att.	Text	The fifth free form line, expressed as text, of the address.
[0..1]	City name	Att.	Text	The name, expressed as text, of the city, town or village of this trade address.
[0..1]	Country	Att.	Identifier	The unique identifier of this country for this trade address.
[0..1]	Country name	Att.	Text	The name, expressed as text, of this country for this trade address.
[0..1]	Country Sub-Division	Att.	Identifier	The unique identifier of the country sub-division for this trade address.
[0..1]	Country Sub-Division Name	Att.	Text	The name, expressed as text, of the sub-division of a country for this trade address.

[0..1]	Trade_ Address. City. Identifier	Att.	Code	The identifier of the city for this trade address, such as United Nations Location Code (UNLOCODE).
[0..1]	Type	Att.	Code	The code specifying the postcode of trade address.

Authoritative Signatory_ Person

Description: A person who is authorized to sign a document, such as a customs officer or other government official.

Mult.	Business term	Rel.	Type	Description
[1]	Authoritative Signatory_ Person. Name.	Att.	Text	The name, expressed as text, of this authoritative signatory person.

Mult.	Association	Description
[0..1]	Authoritative Signatory_ Person. Attained. Academic_ Qualification	The academic qualification attained by this authoritative signatory person.

Trade_Country

Description: The area of land that belongs to a nation together with its properties such as population, political organization, etc., used or referenced for trade purposes.

Mult.	Business term	Rel.	Type	Description
[0..1]	Identification	Att.	Identifier	The unique identifier for this trade country (Reference ISO 3166 and UN/ECE Rec 3.).
[0..1]	Name	Att.	Text	The name, expressed as text, of this trade country.

Mult.	Association	Description
[0..*]	Trade_Country. Subordinate. Trade_Coutry Sub-Division	A trade country sub-division that is subordinate to this trade country, such as a state, a county, a canton, a province.

Trade_Country Sub-Division

Description: A political or physical area or region within the political boundaries of a country used or referenced for trade purposes.

Mult.	Business term	Rel.	Type	Description
[0..1]	Identification	Att.	Identifier	The unique identifier for this trade country sub-division
[0..1]	Name	Att.	Text	The name, expressed as text, of this trade country sub-division.
Association				
Mult.	Association			Description
[0..*]	Trade_Country Sub-Division. Superordinate. Trade_Country Sub-Division.			A superordinate country sub-division for this trade country sub-division.
[0..*]	Trade_Country Sub-Division. Subordinate. Trade_Country Sub-Division.			A subordinate country sub-division within this trade country sub-division.

Referenced_Logistics_Package

Description: A referenced self-contained wrapping or container within which goods can be contained for logistics purposes

Mult.	Business term	Rel.	Type	Description
[1]	Item	Att.	Quantity	The number of referenced logistics packages at this level.
[1]	Level	Att.	Code	The code specifying the level of this referenced logistics package.
[0..1]	Type	Att.	Code	The code specifying the type of referenced logistics package.
[0..1]	Gross Weight	Att.	Measure	The measure of the gross weight (mass) of this referenced logistics package and its contents.
[0..1]	Gross Volume	Att.	Measure	The measure of the gross volume of this referenced logistics package.

Trade_Product

Description: Any tangible output or service produced by human or mechanical effort or by a natural process for trade purposes.

Mult.	Business term	Rel.	Type	Description
[0..1]	Description	Att.	Text	The textual description for this trade

				product.
[0..1]	Net Weight	Att.	Measure	The measure of the net weight (mass) of this trade product.
[0..1]	Gross Weight	Att.	Measure	The measure of the gross weight (mass) of this trade product.
[0..1]	Net Volume	Att.	Measure	The measure of a net volume for this trade product.
[0..1]	Gross Volume	Att.	Measure	The measure of the gross volume for this trade product.
[0..1]	Batch_ Identification	Att.	Identifier	The batch identifier for this trade product.
[0..1]	Common_ Name	Att.	Text	The common name, expressed as text, for this trade product.
[0..1]	Scientific_ Name	Att.	Text	The scientific name, expressed as text, for this trade product.
[0..1]	Intended_ Use	Att.	Text	The intended use, expressed as text, for this trade product.

Mult.	Association	Description
[0..*]	Trade_ Product. Designated. Product_ Classification	A product classification designated for this trade product.
[0..*]	Trade_ Product. Origin. Trade_ Country	A country of origin for this trade product.
[0..*]	Trade_ Product. Additional_ Reference. Referenced_ Document	An additional referenced document for this trade product, such as a manual or a certificate.
[0..*]	Trade_ Product. Information. Note	An information note for this trade product.
[0..*]	Trade_ Product. Origin. Logistics_ Location	A location of origin for this trade product.
[0..*]	Trade_ Product. Specified. Product_ Certificate	A product certificate specified for this trade product.

Product_Classification

Description: A systematic arrangement of products in classes or categories according to established criteria.

Mult.	Business term	Rel.	Type	Description
[0..1]	System	Att.	Identifier	The unique identifier of the classification system for this product classification.
[0..1]	System Name	Att.	Text	The name, expressed as text, of the classification system for this product

				classification.
[0..1]	Class	Att.	Code	The code specifying the class for this product classification.
[0..1]	Class Name	Att.	Text	The class name, expressed as text, for this product classification.

Product_Certificate

Description: A collection of data for a piece of written, printed or electronic matter that provides information or evidence about the product.

Mult.	Business term	Rel.	Type	Description
[0..1]	Identification	Att.	Identifier	The identifier for this product certificate.
[0..1]	Issue	Att.	Date Time	The date, time, date time, or other date time value when this product certificate was issued.
[0..1]	Expiry	Att.	Date Time	The date, time, date time, or other date time value when this product certificate expires.
[0..1]	Issue Reason	Att.	Code	The code specifying the reason why the product certificate was issued.
[0..*]	Type	Att.	Code	A code specifying the type of product certificate.
[0..1]	Requested Effective	Att.	Date Time	The requested effective date, time, date time or other date time value for this product certificate.
[0..1]	Description	Att.	Text	A textual description of this product certificate.
[0..*]	Object	Att.	Code	A code specifying an object, such as item, animal, person or organization applicable for this product certificate.
[0..1]	Issuing_Party	Att.	Identifier	The identifier for the party issuing this product certificate.
[0..*]	Purpose	Att.	Code	A code specifying the purpose of this product certificate.

Logistics_Transport Means

Description: The devices used to convey goods or other objects from place to place during logistics cargo movements.

Mult.	Business term	Rel.	Type	Description
[0..1]	Type	Att.	Code	The code specifying a type of logistics means of transport (Reference UNECE Recommendation 28).
[1..*]	Identification	Att.	Identifier	An identifier of this logistics means of transport, such as the International Maritime Organization number a vessel.
[1]	Name	Att.	Text	The name, expressed as text, of this logistics means of transport.

Logistics_Transport Movement

Description: The conveyance (physical carriage) of goods or other objects used for logistics transport purposes.

Mult.	Business term	Rel.	Type	Description
[0..1]	Mode	Att.	Code	The code specifying the mode, such as by air, sea, rail, road or inland waterway, for this logistics transport movement.
[1]	Identification	Att.	Identifier	The unique identifier for this logistics transport movement, such as a voyage number, flight number, or trip number.

Mult.	Association	Description
[1]	Logistics_Transport Movement. Used. Transport Means	The transport means used for this logistics transport movement.

Referenced_Document

Description: Written, printed or electronic matter that is referenced.

Mult.	Business term	Rel.	Type	Description
[0..1]	Type	Att.	Code	The code specifying the type of referenced document.
[0..1]	Relationship Type	Att.	Code	The code specifying the type of

				relationship between this referenced document and another artefact, such as a replacement of an original document.
[0..*]	Identification	Att.	Identifier	An unique identifier for this referenced document.
[0..*]	Attachment	Att.	Binary Object	A binary object that is attached or otherwise appended to this referenced document.
[0..1]	Information	Att.	Text	The information expressed as text for this referenced document.
[0..1]	Formatted_Issue	Att.	Date Time	The formatted date, time, date time, or other date time value for the issuance of this referenced document.

Document_Authentication

Description: A proof that a document is genuine.

Mult.	Business term	Rel.	Type	Description
[0..1]	Type	Att.	Code	The code specifying the type of document authentication.
[1]	Actual	Att.	Date Time	The actual date, time, date time, or other date time value of this document authentication.

Mult.	Association	Description
[1]	Document_Authentication. Provider. Trade_Party	The trade party providing the document authentication.
[0..1]	Document_Authentication. Issue. Logistics_Location	The logistics location where the document authentication is issued.

Academic_Qualification

Description: An academic achievement that is officially recognized.

Mult.	Business term	Rel.	Type	Description
[0..1]	Name	Att.	Text	The name, expressed as text, of this academic qualification.
[0..1]	Abbreviated Name	Att.	Text	The abbreviated name, expressed as text, of this academic qualification.

Supply Chain_Event

Description: A significant occurrence or happening in a supply chain

Mult.	Business term	Rel.	Type	Description
[0..1]	Description	Att.	Text	A textual description of the event.
[0..*]	Type	Att.	Code	A code specifying the type of event.

Mult.	Association	Description
[0..1]	Supply Chain_ Event. Actual. Inspection_ Status	The actual inspection status of this supply chain event.

Inspection_Status

Description: The information relevant to a condition related to an inspection.

Mult.	Business term	Rel.	Type	Description
[0..1]	Condition	Att.	Code	The code specifying this inspection status condition
[0..1]	Description	Att.	Text	The textual description of this inspection status

Supply Chain_Trade Line Item

Description: A collection of information specific to an item being used or reported on for supply chain trade purposes.

Mult.	Business term	Rel.	Type	Description
[0..1]	Sequence	Att.	Numeric	The sequence number for this supply chain trade line item.
[1]	Description	Att.	Code	The code specifying a description of this supply chain trade line item.

Logistics_Location

Description: A logistics related physical location or place.

Mult.	Business term	Rel.	Type	Description
[0..1]	Identification	Att.	Identifier	The unique identifier for this logistics related location, such as a United Nations

				Location Code (UNLOCODE) or GS1 Global Location Number (GLN).
[0..1]	Name	Att.	Text	The name, expressed as text, of this logistics related location.
[0..1]	Type	Att.	Code	The code specifying the type of this logistics related location.
[0..1]	Description	Att.	Text	The textual description of this logistics related location.

Mult.	Association	Description		
[0..*]	Logistics_Location. Inspection. Supply Chain_Event	A supply chain inspection event at this logistics location.		

Acknowledgement Document

Description: A document exchanged between parties for a business application level acknowledgement of the receipt of information.

Mult.	Business term	Rel.	Type	Description
[1]	Issue	Att.	Date Time	The date, time, date time, or other date time value of the issuance of this acknowledgement document.
[0..1]	Reason_Information	Att.	Text	The reason information expressed as text for this acknowledgement document.
[0..1]	Status	Att.	Code	The code specifying the status of this acknowledgement document.

Appendix 1: Mapping Document eQuality Certificate

Information needs in eQuality	ABIE, BBIE, ASBIE
Quality Certificate	ABIE: Exchanged_Document BBIE: <ul style="list-style-type: none"> - Name - Description - Type
Unique No certificate Number/code	ABIE: Exchanged_Document BBIE: <ul style="list-style-type: none"> - Identification
This certificate is for the exclusive use of control services	ABIE: Note BBIE: <ul style="list-style-type: none"> - Subject - Subject Code - Content - Content Code ABIE: Exchanged_Document ASBIE: Exchanged_Document. Included. Note
Name exporter/trader/packer/consignor/ consignee,... And/or Identification code	ABIE: Trade_Party BBIE: <ul style="list-style-type: none"> - Identification - Role - Type - Name ABIE: Supply Chain_Consignment ASBIE: Supply Chain_Consignment. Associated. Trade_Party
Address	ABIE: Trade_Address BBIE: <ul style="list-style-type: none"> - City - Trade_Country - Sub-Division - Line One, Two, Three, Four, Five - Postcode - Type ABIE: Trade_Party ASBIE: Trade_Party. Specified. Trade_Address
Control service Inspection body Competent authority	ABIE: Trade_Party BBIE: <ul style="list-style-type: none"> - Identification - Role - Type - Name

	<p>ABIE: Exchanged_Document</p> <p>ASBIE:</p> <p>Exchanged_Document. Issuer. Trade_Party</p>
<p>Country of origin (producing country)</p>	<p>ABIE: Trade_Product</p> <p>ABIE: Trade_Country</p> <p>ABIE: Trade_Country Sub-Division</p> <p>ASBIE:</p> <p>Trade_Product. Origin. Trade_Country</p> <p>Trade_Product. Origin. Logistics_Location</p> <p>Trade_Country. Subordinate. Trade_Country Sub-Division</p> <p>Trade_Country Sub-Division. Subordinate. Trade_Country Sub-Division</p> <p>Trade_Country Sub-Division. Superordinate. Trade_Country Sub-Division</p>
<p>Region or country of destination</p>	<p>ABIE: Trade_Country</p> <p>BBIE:</p> <ul style="list-style-type: none"> - Identification - Name <p>ABIE: Trade_Country Sub-Division</p> <p>BBIE:</p> <ul style="list-style-type: none"> - Identification - Name <p>ABIE: Logistics_Location</p> <p>BBIE:</p> <ul style="list-style-type: none"> - Identification - Name <p>ABIE: Supply Chain_Consignment</p> <p>ASBIE:</p> <p>Supply Chain_Consignment. Export. Trade_Country</p> <p>Supply Chain_Consignment. Re Export. Trade_Country</p> <p>Supply Chain_Consignment. Transit. Trade_Country</p> <p>Supply Chain_Consignment. Consignee receipt. Logistics_Location</p> <p>Supply Chain_Consignment. Unloading. Logistics_Location</p> <p>Trade_Country. Subordinate. Trade_Country Sub-Division</p> <p>Trade_Country Sub-Division. Subordinate. Trade_Country Sub-Division</p> <p>Trade_Country Sub-Division. Superordinate. Trade_Country Sub-Division</p>
<p>Means of transport</p> <p>Identifier of means of transport</p> <p>Name of the vessel</p> <p>Vessel / flight number / trip number</p>	<p>ABIE: Transport means</p> <p>BBIE:</p> <ul style="list-style-type: none"> - Name (Text) - Type - Identification: Identifier <p>ABIE: Logistics_Transport Movement</p> <p>BBIE:</p> <ul style="list-style-type: none"> - Identification - Mode <p>ABIE: Supply Chain_Consignment</p> <p>ASBIE:</p>

	<p>Supply Chain_Consignment. Main Carriage. Logistics_Transport Movement</p> <p>Logistics_Transport Movement. Used. Transport Means</p>
<p>Port / airport of loading (name)</p> <p>Port / airport of discharge (name)</p>	<p>ABIE: Supply Chain_Consignment</p> <p>ABIE: Logistics_Location</p> <p>ASBIE:</p> <p>Supply Chain_Consignment. Loading. Logistics_Location</p> <p>Supply Chain_Consignment. Unloading. Logistics_Location</p> <p>Supply Chain_Consignment. Transit. Logistics_Location</p>
<p>Space reserved for national regulations</p>	<p>ABIE: Note</p> <p>BBIE:</p> <ul style="list-style-type: none"> - Subject - Subject Code - Content - Content Code <p>ABIE: Trade_Product</p> <p>ASBIE:</p> <p>Trade_Product. Information. Note</p>
<p>Packages (number and kind)</p> <p>Total net weight in kg</p>	<p>ABIE: Supply Chain_Consignment Item</p> <p>BBIE:</p> <ul style="list-style-type: none"> - Identification <p>ABIE: Supply Chain_Trade Line Item</p> <p>BBIE:</p> <ul style="list-style-type: none"> - Sequence - Description <p>ABIE: Referenced_Logistics_Package</p> <p>BBIE:</p> <ul style="list-style-type: none"> - Item: Quantity - Level - Type - Nominal Gross Volume - Nominal Gross Weight <p>ASBIE:</p> <p>Supply Chain_Consignment Item. Included. Supply Chain_Trade Line Item</p> <p>Supply Chain_Trade Line Item. Physical. Referenced_Logistics_Package</p>
<p>Type/nature of produce (variety if standard specifies)</p> <p>Quality class</p>	<p>ABIE: Trade_Product</p> <p>BBIE:</p> <ul style="list-style-type: none"> - Description - Common_Name - Scientific_Name - Intended_Use <p>ABIE: Classification</p> <p>BBIE:</p> <ul style="list-style-type: none"> - Class - Class name - System - System name <p>ABIE: Trade_Country</p>

	<p>ABIE: Trade_Country Sub-Division</p> <p>ABIE: Logistics_Location</p> <p>ASBIE:</p> <p>Trade_Product. Designated. Classification</p> <p>Trade_Product. Origin. Trade_Country</p> <p>Trade_Country. Subordinate. Trade_Country Sub-Division</p> <p>Trade_Product. Origin. Logistics_Location</p>
<p>Batch/lot no</p> <p>Net weight per lot</p> <p>Gross weight</p>	<p>ABIE: Trade_Product</p> <p>BBIE:</p> <ul style="list-style-type: none"> - Description - Batch Identification - Net Weight - Gross Weight - Net Volume - Gross Volume <p>ABIE: Referenced_Logistics_Package</p> <p>BBIE:</p> <ul style="list-style-type: none"> - Nominal Gross Volume - Nominal Gross Weight
<p>Conformance according to standard</p> <p>Place of issue</p> <p>Date</p> <p>Certificate Valid until</p>	<p>ABIE: Exchanged_Document</p> <p>BBIE:</p> <ul style="list-style-type: none"> - Status - Description - Type - Issue - Cancellation <p>ABIE: Note</p> <p>BBIE:</p> <ul style="list-style-type: none"> - Subject - Subject Code - Content - Content Code <p>ABIE: Logistics_Location</p> <p>ASBIE:</p> <p>Exchanged_Document. Included. Note</p> <p>Exchanged_Document. Issue. Logistics_Location</p>
<p>Have the good been inspected? Yes/no</p>	<p>ABIE: Supply Chain_Event</p> <p>BBIE:</p> <ul style="list-style-type: none"> - Description - Type <p>ABIE: Inspection Status</p> <p>BBIE:</p> <ul style="list-style-type: none"> - Condition - Description <p>ASBIE:</p> <p>Supply Chain_Event. Actual. Inspection Status</p>
<p>Place of inspection</p>	<p>ABIE: Supply Chain_Event</p> <p>ABIE: Logistics_Location</p>

	<p>BBIE</p> <ul style="list-style-type: none"> - Identification - Description - Name - Type <p>ASBIE:</p> <p>Supply Chain_Event. Occurrence. Logistics_Location</p>
<p>Customs office (departure/arrival)</p>	<p>ABIE: Trade_Party</p> <p>BBIE:</p> <ul style="list-style-type: none"> - Identification - Role - Type - Name <p>ABIE: Trade_Address</p> <p>ASBIE:</p> <p>Trade_Party. Specified. Trade_Address</p>
<p>Signatory (name of the authorising person of control service) Signature</p>	<p>ABIE: Exchanged-Document</p> <p>ABIE: Trade_Party</p> <p>BBIE:</p> <ul style="list-style-type: none"> - Identification - Role - Type - Name <p>ABIE: Autoritative_Signatory_Person</p> <p>BBIE:</p> <ul style="list-style-type: none"> - Name: text <p>ABIE: Document_Authentication</p> <p>BBIE:</p> <ul style="list-style-type: none"> - Actual - Type <p>ABIE: Academic_Qualification</p> <p>BBIE:</p> <ul style="list-style-type: none"> - Name - Abbreviated Name <p>ASBIE:</p> <p>Document_Authentication. Provider. Trade_Party</p> <p>Trade_Party. Specified. Person</p> <p>Autoritative_Signatory Person. Attained. Academic_Qualification</p> <p>Exchanged_Document. Signatory. Document_Authentication</p>
<p>Free text area Observations</p>	<p>ABIE: Exchanged_Document</p> <p>ABIE: Referenced_Document</p> <p>BBIE:</p> <ul style="list-style-type: none"> - Attachment - Identification - Information - Formatted_Issue - Relationship Type - Type <p>ABIE: Note</p>

	<p>BBIE:</p> <ul style="list-style-type: none"> - Subject - Subject Code - Content - Content Code <p>ABIE: Trade_Product</p> <p>ASBIE:</p> <p>Exchanged_Document. Reference. Referenced _Document</p> <p>Trade_Product. Information. Note</p>
Optional for B2B	
<p>Post harvest treatments</p> <p>Other trade codes</p>	<p>ABIE: Product_Classification</p> <p>BBIE:</p> <ul style="list-style-type: none"> - Class Code - Class Name - System Identifier - System Name <p>ASBIE: Trade_Product. Applicable. Product_Classification</p>
Certificates	<p>ABIE: Product_Certificate</p> <p>ABIE: Trade_Product</p> <p>ASBIE:</p> <p>Trade_Product. Specified. Product_Certificate</p>

Appendix 2: Example of a paper certificate

C(2006)95

APPENDIX I: MODEL CONFORMITY CERTIFICATE

1 Exporter		OECD SCHEME	CONFORMITY CERTIFICATE N°	
		This certificate is for the exclusive use of control services		
2 Packer as indicated on packing (if other than exporter)		3 Control service		
		4 Country of origin *	5 Country of destination	
6 Identification of means of transport		7 Space reserved for national regulations **		
8 Number (and kind **) of packages	9 Nature of produce (variety when specified by the standard)	10 Quality class	11 Total weight in kg gross/net ***	
<p>The consignment referred to above conforms, at issue time , with the standards .</p> <p>.....</p> <p>Customs office of departure ** Place and date of issue</p> <p>Duration of validity days</p> <p>.....</p> <p>Signatory (name in block capitals)</p> <p>Signature Seal of Authorized Control Service</p>				
13 Observations				
<p>* When the produce is re-exported, indicate its origin after the nature of the produce</p> <p>** Optional</p> <p>****</p>				

Format of the certificate: printed on a 297 mm x 210 mm sheet