



UN-ECE

Questionnaire on the Implementation of GIS in Statistics

Neuchatel, Switzerland
April 10 - 12, 2000



GIS Usage and Development Q. 1 - 2

| | Respondents | Yes | No | Future |
|------------------|-------------|-----------|----------|----------|
| N. America | 2 | 2 | 0 | 0 |
| W. Europe | 17 | 15 | 2 | 2 |
| C. and E. Europe | 12 | 10 | 2 | 2 |
| CIS | 6 | 1 | 5 | 4 |
| Total | 37 | 28 | 9 | 8 |





GIS Usage and Development Q. 3

- 100% of countries use ESRI products
 - ArcInfo, Arcview, SDE, MO IMS, Atlas GIS
- 46% of countries use MapInfo
- 11% of countries use other
 - Microstation, AutoCAD, SPANS, IDRISI, Maptitude, Mapviewer, GeoMedia, AVISO, Erdas, ILWIS
- 68% of countries use multiple softwares

13/04/00

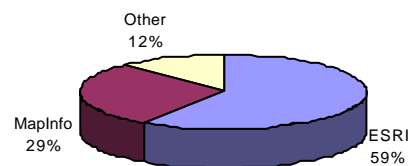


3



GIS Usage and Development Q. 3 (con't)

Percentage of Software Licenses
(total: 1105)



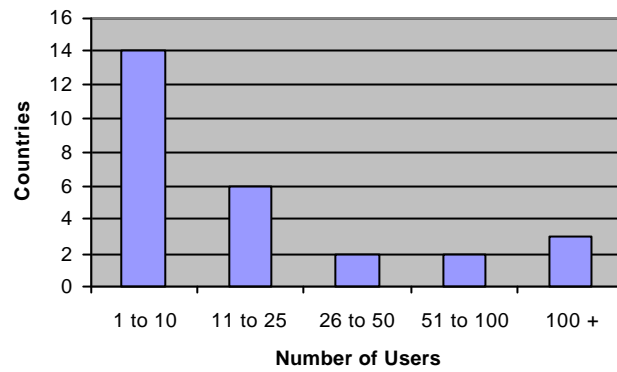
13/04/00



4



GIS Usage and Development Q. 4 (con't)



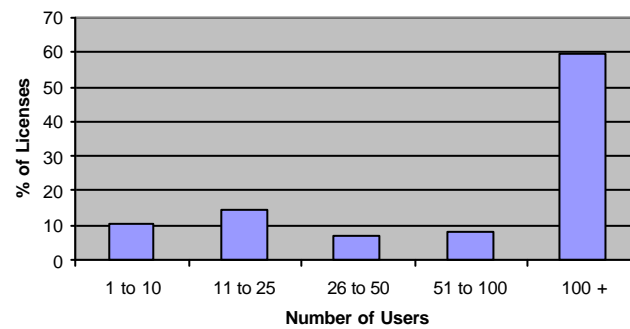
13/04/00



5



GIS Usage and Development Q. 4 (con't)



13/04/00



6



GIS Usage and Development Q. 5

- data creation: 77%
- mapping: 96%
- spatial analysis: 77%
- geocoding: 54%
- 11 countries use all functions of GIS



GIS Usage and Development Q. 6

- Administrative/Political: 100%
- Geographic/Topographic: 85%
- Road network : 66%
- Street address/Building: 62%
- Satellite imagery used by 4 countries
- 11 countries use all types of spatial data





GIS Usage and Development Q. 7

- 23 countries integrate data files
- 3 countries use only data files of organisation

13/04/00



9



Applications Q. 8

Social and Demographic Statistics

| | Planning | Collect | Process | Confid. | Diss. |
|------------|----------|---------|---------|---------|-------|
| Pop Census | 14 | 12 | 16 | 8 | 21 |
| Health | 1 | 0 | 5 | 0 | 8 |
| Justice | 1 | 0 | 2 | 0 | 2 |
| Education | 2 | 2 | 3 | 0 | 9 |
| Labour | 3 | 4 | 5 | 1 | 6 |
| Household | 4 | 5 | 5 | 3 | 7 |
| Other | 0 | 1 | 3 | 1 | 3 |

13/04/00



10



Applications Q. 8

Economic Statistics

| | Planning | Collect | Process | Confid. | Diss. |
|----------------|----------|---------|---------|---------|-------|
| General | 4 | 2 | 3 | 0 | 4 |
| Trade | 1 | 1 | 2 | 1 | 2 |
| Transportation | 4 | 1 | 2 | 1 | 2 |
| Tourism | 0 | 0 | 2 | 1 | 1 |
| Agriculture | 4 | 2 | 5 | 1 | 7 |
| Industry | 2 | 1 | 3 | 1 | 3 |
| Energy | 1 | 0 | 2 | 0 | 0 |
| Other | 0 | 2 | 5 | 5 | 3 |

13/04/00



11



Applications Q. 8

Environmental Statistics and Other

| | Planning | Collect | Process | Confid. | Diss. |
|---------------|----------|---------|---------|---------|-------|
| Air Quality | 1 | 2 | 4 | 2 | 6 |
| Water Quality | 1 | 2 | 1 | 5 | 5 |
| Water Use | 0 | 1 | 1 | 1 | 3 |
| Land Use | 4 | 0 | 1 | 0 | 4 |
| Fauna/Flora | 1 | 0 | 1 | 0 | 4 |
| Other | 5 | 2 | 5 | 2 | 4 |
| OTHER | 0 | 3 | 6 | 4 | 5 |

13/04/00



12



Applications

Q. 9 - 11

- All clients types served
 - majority in gov't, education, private
- more cross sectorial, interagency projects
 - mainly with gov't

13/04/00



13



Issues

Q. 12 - 15

- Data creation and management
- Personnel issues
- Systems acquisition and development
- up-coming census
- Web-based GIS

13/04/00



14



International Co-operation

Q. 16 - 19

- 6 North American and Western Europe countries provide assistance to CIS and Africa

