

**SAFETY GUIDELINES AND GOOD
PRACTICES FOR
TAILINGS MANAGEMENT FACILITIES**

Péter Kovács
Ministry of Environment and Water
Hungary

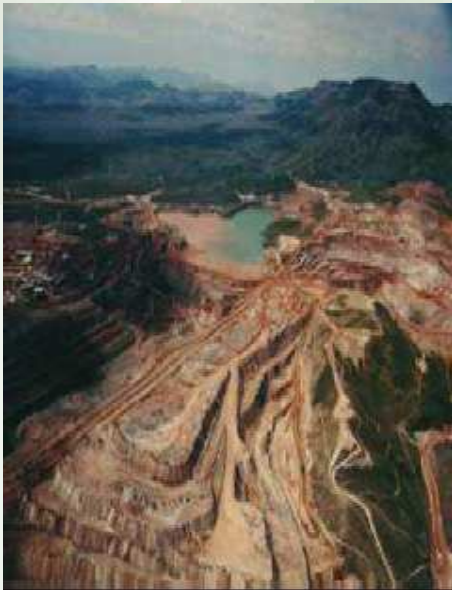
*5th Meeting of the Parties to the UN ECE Convention in the Protection and Use of
Transboundary Watercourses and International Lakes*

10-12. November 2009, Geneva

EXAMPLES OF HISTORICAL ACCIDENTS

At least 221 serious tailing
management facilities
accidents reported by UNEP.

(<http://www.mineralresourcesforum.org/docs/pdfs/Bulletin121.PDF>)



CAUSES OF ACCIDENTS

- Inadequate management
- Lack of control of hydrological system
- Errors in site selection and investigation
- Unsatisfactory foundation, lack of stability of downstream slope
- Seepage
- Overtopping
- Earthquakes and landslides

**MAIN ROOT CAUSE:
RISK ANALYSIS AND RISK
MANAGEMENT
NEGLECTED**

- Both **Parties** to the Conventions **mandated the Joint Expert Group (JEG)** to draw up safety guidelines and a summary of good practices for tailings management facilities.
- JEG prepared the safety guidelines which constitute a minimum set of requirements to ensure a basic level of safety for TMFs.
- Guidelines based directly upon the body of work produced by the global community of dam safety, scientists, professional bodies and intergovernmental agencies:
 - European Commission
 - International Commission on Large Dams (ICOLD)
 - UNEP
 - International Council on Metals and Mining (ICMM)
 - Others...

- Governments should provide leadership and frameworks to facilitate the development, safe operation and decommissioning of TMFs.
- The operators of TMFs have the primary responsibility for ensuring safety
- All parts of TMF and all live-cycle (*planning–construction–operation–closure–rehabilitation*) of TMF should be considered
- Abandoned TMF's should be taken into account

- Only competent, properly certified and trained personnel should be engaged in the planning, design, construction, operation/management and closure of TMFs
- TMFs should be operated in accordance with the construction, safety and environmental norms and best practices
- Risk assessment is part of TMF operation
- Risk management including emergency planning has to be applied

Recommendations:

- to UNECE member countries:
- to competent authorities
- to tailings management facility operators

+ Annexes:

- Pre-construction and construction
- Operation and management
- Inspection
- Abandoned sites identification, classification and management
- Emergency planning



Safety guidelines (as not legally binding document)

- **intends to help to operators and competent authorities to increase TMF safety**
- **should be implemented by UNECE member countries, competent authorities and operators to reach a harmonized safety level for TMFs.**





Thank you for your attention !