



Ministerie van Verkeer en Waterstaat

Guidance on Water and Climate Adaptation

Joost J. Buntsma

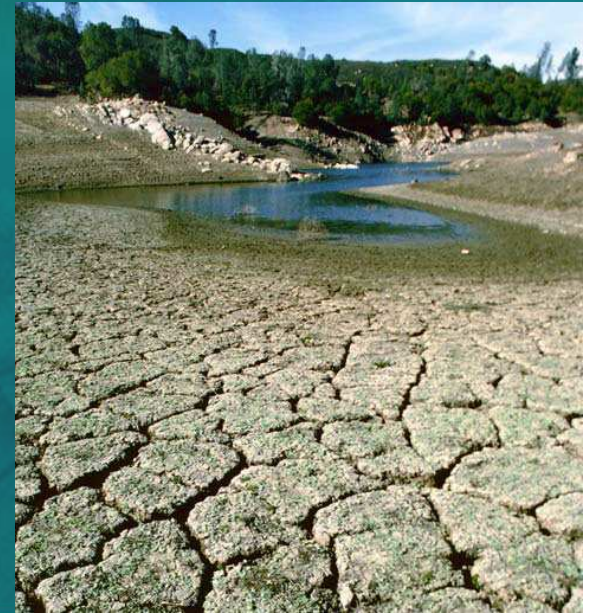
Directorate-General for Water Affairs

Water and adaptation to climate change: Joining efforts to adapt

1-2 July 2008

Mandate to develop the Guidance

- Parties to the Water Convention:
prepare Guidance on Water and
Adaptation to Climate Change
 - tool to support cooperation and decision
making in transboundary basins
- The Guidance is to be adopted by
Parties at their fifth meeting
(November, 2009)



Mandate to develop the Guidance

- Guidance developed by:
 - Task Force on Water and Climate (under the Water Convention)
 - Task Force on Extreme Weather Events (under the Protocol on Water and Health)
- Survey among non-EEA countries, through Questionnaire (Feb.-April 2008)
- Amsterdam Workshop (1-2 July 2008): share experiences and comment the Guidance



Aim of the Task Force

- Develop general roadmap for climate proofing of water management
- Provide step-wise approach on:
 - assessing impacts of climate change
 - developing policy, strategic and tactical responses
- Effective transboundary cooperation is ensured
- Floods, droughts and quality aspects, including health



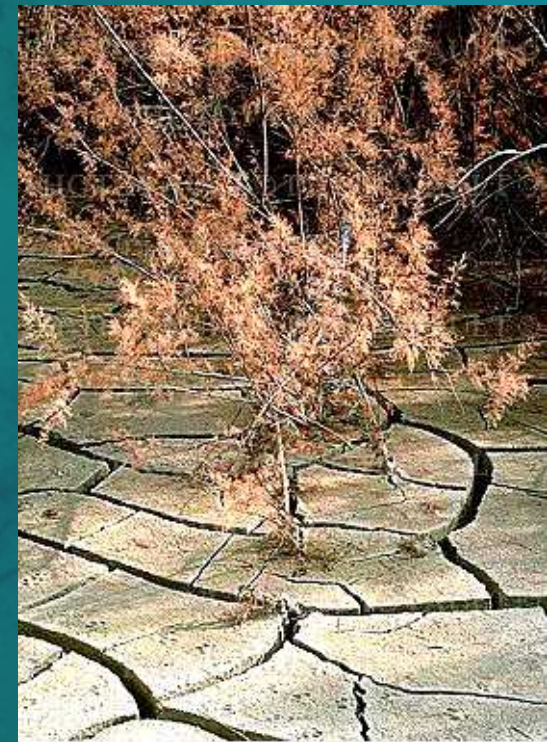
Target group for the Guidance



- Decision makers:
 - water management
 - health-related issues
- Officials, managers and stakeholders of other relevant sectors
- Entire UNECE region, focus on countries with economies in transition

General principles and approaches

- Riparian Parties cooperate on the basis of equality and reciprocity
- Climate-proofing/mainstreaming
- No-regret and low-regret options
- Health risk of climate change

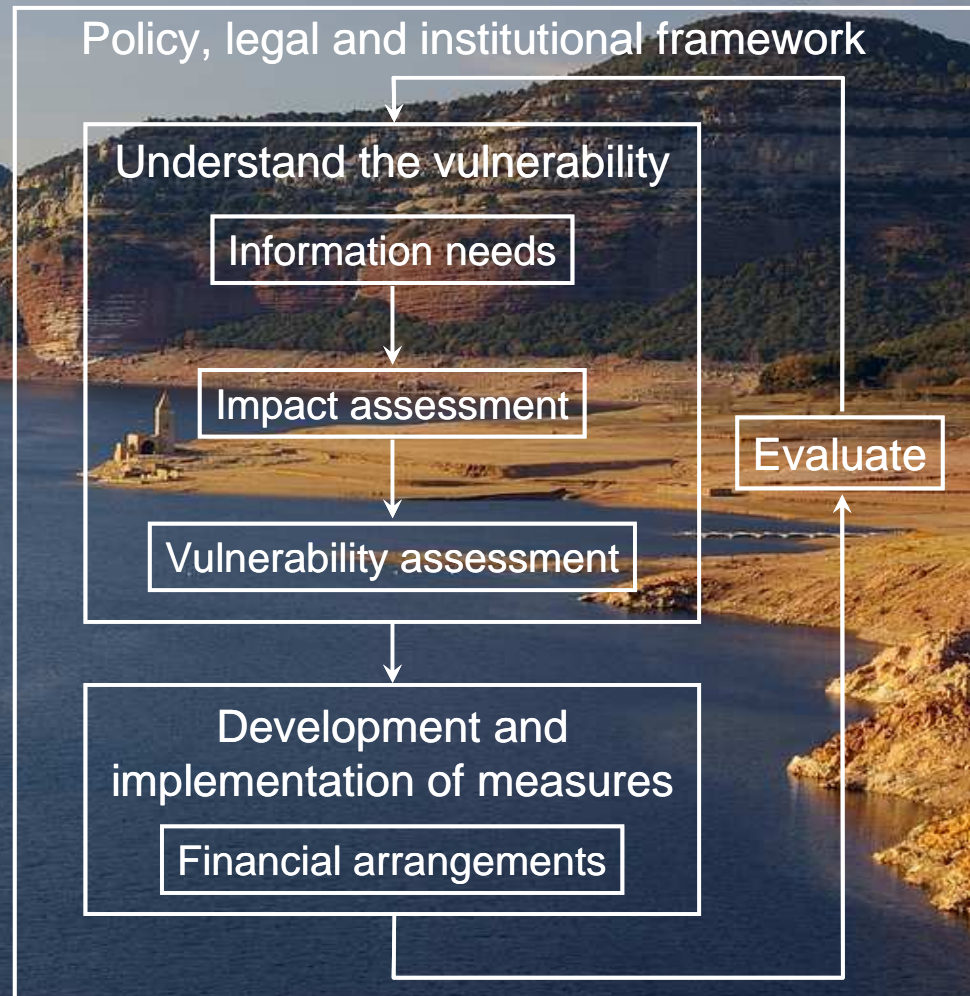


General principles and approaches

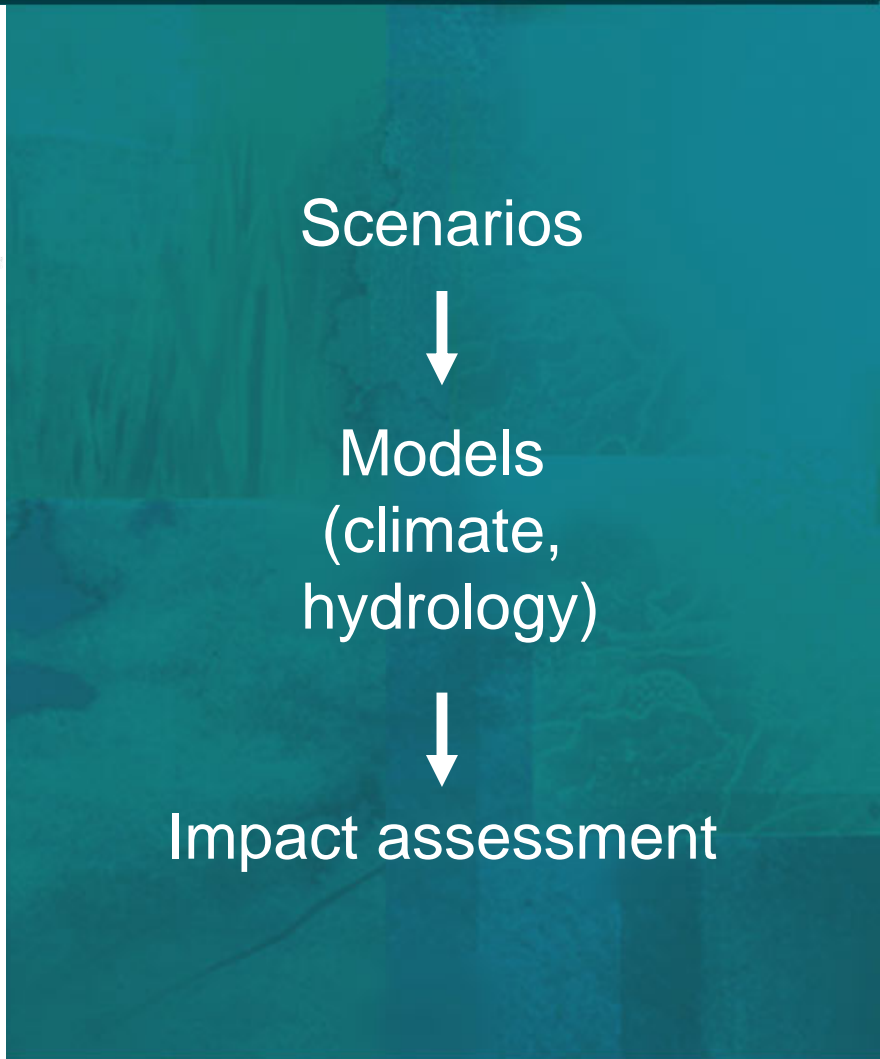
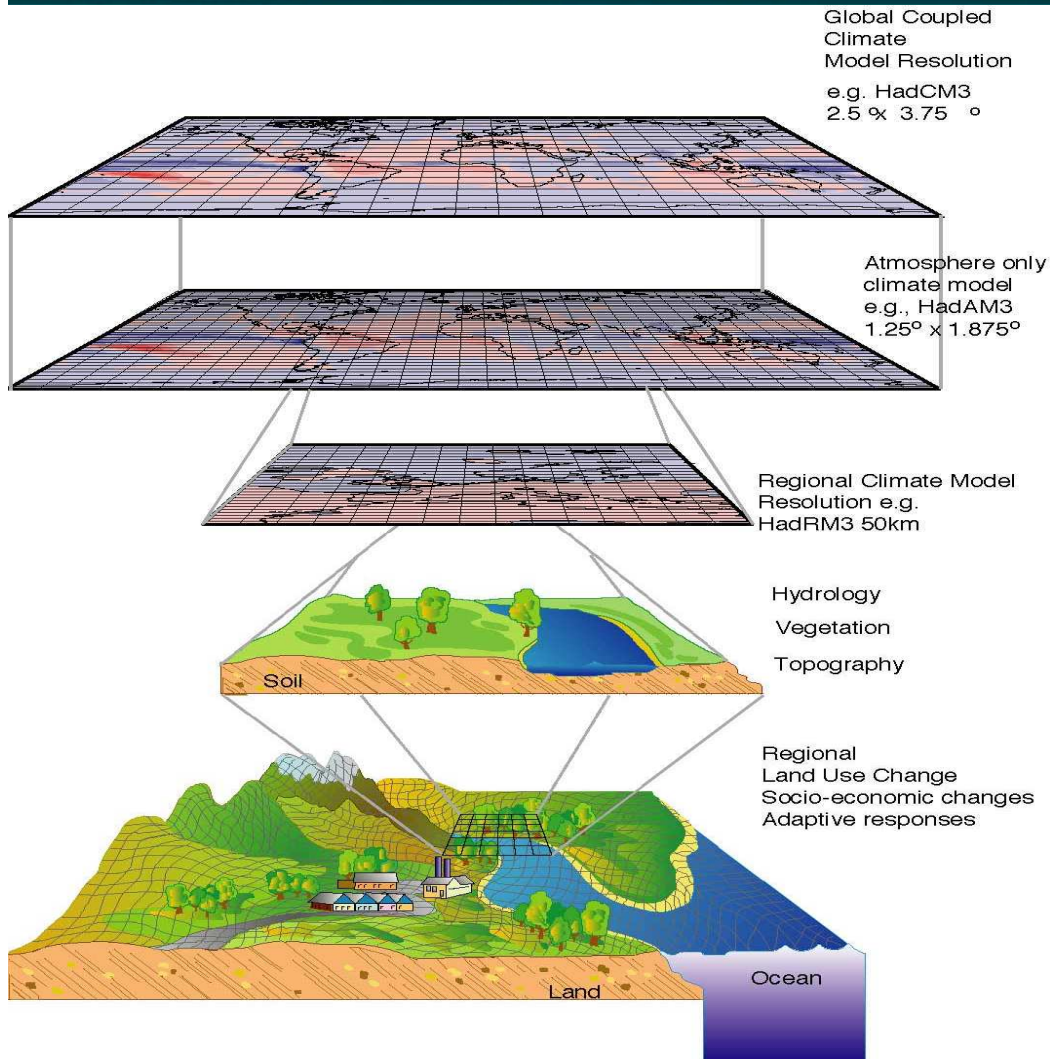
- River basin approach and IWRM
- Precautionary principle
- Tailoring in space and time



Structure of the Guidance



Scenarios and models for impact assessment



Vulnerability assessment



- Help decision makers to assess vulnerability
- Provide information to guide choices
 - where and when interventions
- Based on scenarios and model outcomes

Develop measures: safety chain



Evaluation

- Throughout the adaptation chain
- Different levels (strategy and measure/project)
- Monitor the progress vis-à-vis achieving objectives
- Learning by doing



Improve guidance



UNITED NATIONS
ECONOMIC COMMISSION FOR EUROPE

WORLD HEALTH ORGANIZATION
REGIONAL OFFICE FOR EUROPE

MEETING OF THE PARTIES TO
THE CONVENTION ON THE PROTECTION
AND USE OF TRANSBOUNDARY
WATERCOURSES AND INTERNATIONAL LAKES

MEETING OF THE PARTIES TO THE PROTOCOL ON WATER AND HEALTH
TO THE CONVENTION ON THE PROTECTION AND USE OF TRANSBOUNDARY
WATERCOURSES AND INTERNATIONAL LAKES

Workshop on water and adaptation to climate change
Amsterdam (the Netherlands), 1-2 July 2008

DRAFT GUIDANCE ON WATER AND CLIMATE ADAPTATION

This document has been prepared for the Workshop on Water and Climate Adaptation