



**TÉCNICO LISBOA**

## Innovative approaches to public participation in environmental decision-making

Maria do Rosário Partidário  
SENSU - DECivil e Arquitectura, IST

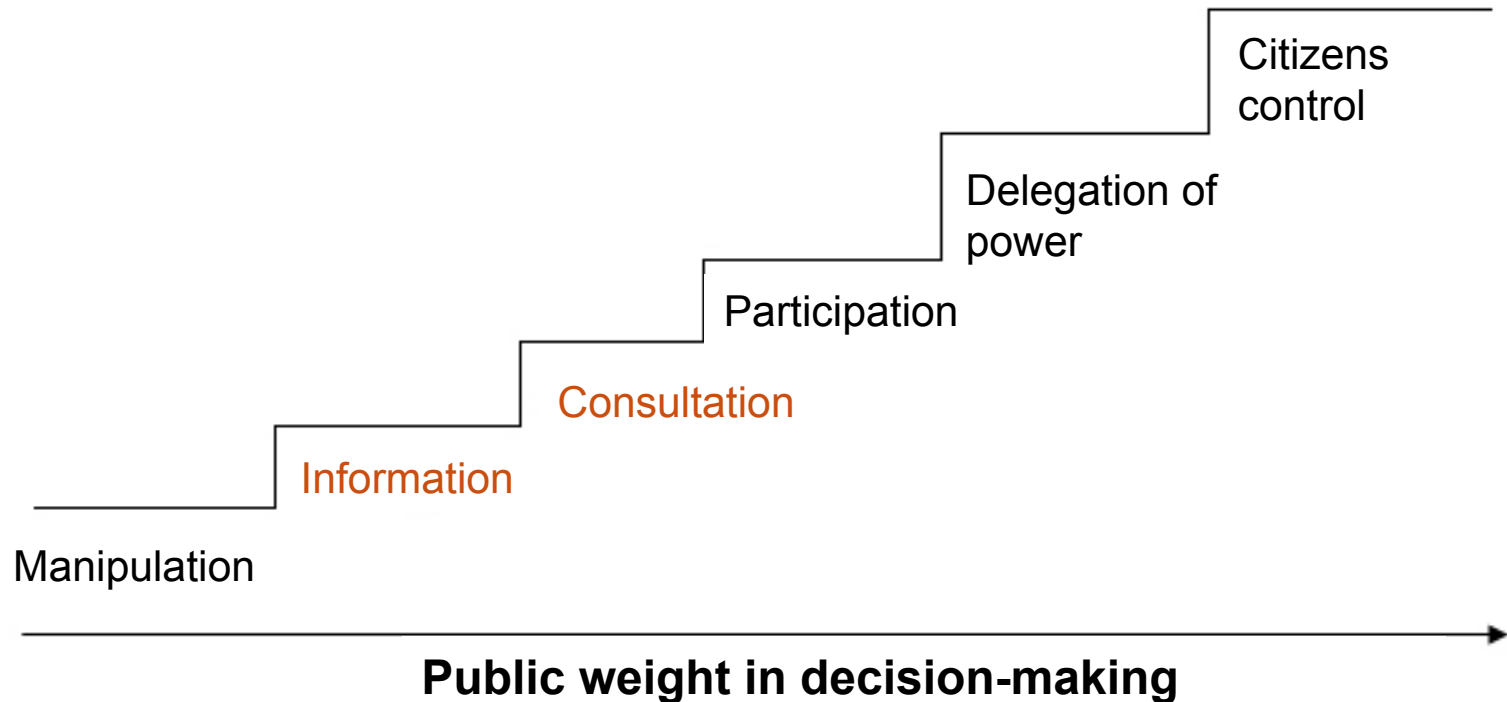
Public participation may be defined as the INVOLVEMENT OF INDIVIDUALS AND GROUPS that are POSITIVELY OR NEGATIVELY affected by, or that are interested in, a proposed project, program, plan or policy, that is subject to a decision-making process



IAIA Public Participation,  
International Best Practice Principles, 2006  
([www.iaia.org](http://www.iaia.org))

# Citizens participation ladder

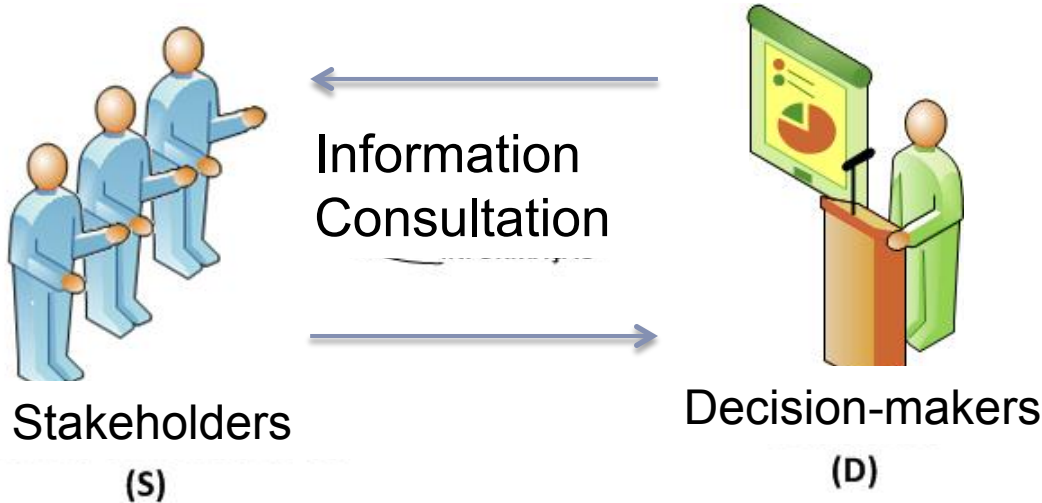
Arnstein (1969, *Journal of the American Planning Association*, 35: 216-224)



What happens in IA – still much scope for improvement

# Shift paradigms

## From giving information



- science is not enough
- learning processes
- traditional knowledge
- collaborative processes

## to asking for views

for creative development and mutual learning



# Evolving Co-Management Practice: Community-Based Environmental Monitoring with Tl'azt'en Nation on the John Prince Research Forest



2004

Deanna Yim<sup>1</sup>, Chris Johnson<sup>1</sup>, and Erin Sherry<sup>2</sup>

<sup>1</sup>University of Northern British Columbia, Natural Resources and Environmental Studies Graduate Program, 3333 University Way, Prince George, BC, V2N 4Z9; <sup>2</sup>Integrated Land Management Bureau, BC Ministry of Agriculture and Lands, Scotia Bank Building, 1011 4<sup>th</sup> Ave., Prince George, BC.



## Community-Based Environmental Monitoring

- Community-based environmental monitoring (CBEM) is an approach to achieving effective co-management that uses bottom-up, community centered methods to translate local values and beliefs into formal monitoring frameworks that contribute to improved management practices
- Through CBEM, First Nation communities can realize local visions of environmental health and contribute to the sustainable management of resources through culturally relevant means
- CBEM builds communities into the co-management framework as an essential component of the feedback loop that informs current and future management decisions
- CBEM can utilize indigenous and scientific knowledge in a complimentary manner; co-production of knowledge can generate a more holistic understanding of the environment with benefits to co-management (Berkes 1999)

## Tl'azt'en Environmental Monitoring



Tl'azt'en environmental measures of co-management success are being developed for 5 focal plant and animal species representative of traditional use activities. These traditional use activities and representative species are:



## Research Objectives

Our principal objective is to develop and apply community-based methods that will allow us to identify and evaluate Tl'azt'en measures of environmental health and sustainability. Through a case study with Tl'azt'en Nation and the John Prince Research Forest (JPRF), we will:

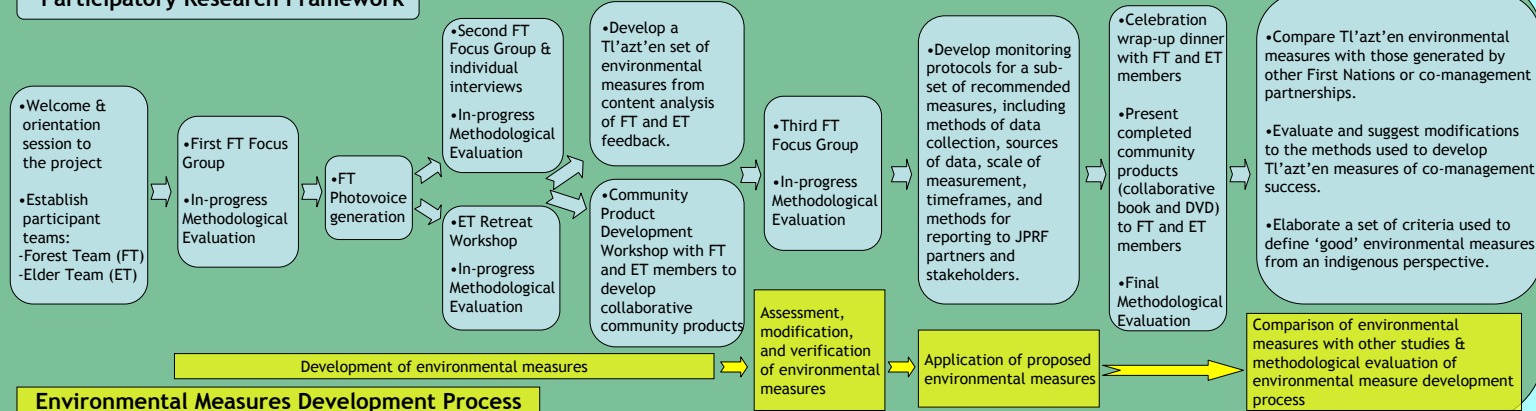
- develop and evaluate a community-based process for identifying Tl'azt'en environmental measures of co-management success;
- identify Tl'azt'en environmental measures for 5 plant and animal species that will contribute to the development of a Tl'azt'en CBEM system;
- work with Team members to pilot and evaluate a proposed CBEM framework for select Tl'azt'en measures of environmental health and sustainability; and,
- assess the challenges and opportunities involved in community-based environmental monitoring and recommend improvements for future projects.

## Research Design

### Participatory Research Framework & Tl'azt'en Environmental Measures Development Process

This collaborative research project with Tl'azt'en Nation uses participatory research methods and seeks to develop an integrative, adaptable framework for applying indigenous and scientific knowledge in community-based environmental monitoring.

## Participatory Research Framework



### Environmental Measures Development Process



Tl'azt'en Nation and the University of Northern BC

*Community-University Research Alliance*

# Partnering for Sustainable Resource Management

- Conducting research in: Improved Partnerships - Traditional Ecological Knowledge - Education - Ecotourism

<http://cura.unbc.ca/jprf.htm>

---





lebensministerium.at



AUSTRIAN SOCIETY FOR  
ENVIRONMENT AND TECHNOLOGY

Shaping the future together



## The Public Participation Manual

In collaboration with:



Büro Arbter



Potential application:

-EIA

-SEA

-Strategies for  
Sustainability

-Local Agenda 21

-Spatial and  
Development planning

Who is involved?

Stages and Methods  
of PP

Benefits of PP

Austrian Manual on PP, 2007

# Stages and Methods of PP

## Future vision

Future workshop or conference

## Complex situations

Open space conference

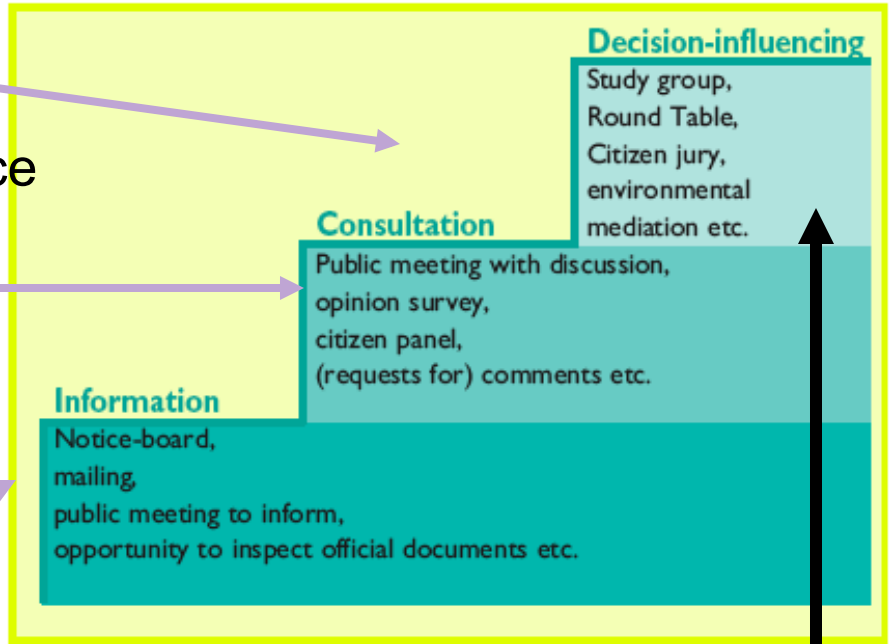
Citizen jury

## Activating Opinion

Activating opinion survey

Citizen Panel

Internet Forum



## High conflict and controversial situations

Consensus conference

Mediation

Round Table





Roundtable approach  
Austria, PP Manual 2007





TÉCNICO LISBOA

# Social Analysis Systems <http://www.sas2.net/>



## Participatory Action Research, Planning, and Evaluation

HOME OUR VISION SKILLFUL MEANS PEOPLE CONTACT US



**Our Vision:** Dialogue and collaborative inquiry to effectively engage people and mobilize evidence in a complex world



**Skillful Means:** Flexible tools and grounded theory to support participatory action research, planning and evaluation



**People:** A worldwide community of facilitators, researchers and consultants that brings a shared vision to life in educational institutions, communities, workplaces, and the public sector



[About us](#)



[What we do](#)



[News and Diary](#)



[Knowledge hubs](#)



[Contact us](#)

Sign up to our e-bulletin

Follow us on Twitter

Search keywords, title, project reference...

**SEARCH**



**CLIMATE RESILIENCE**



**SUSTAINABLE CITIES**



**RESILIENT CATCHMENTS**



**ENVIRONMENT AND HEALTH**



**ENVIRONMENTAL REGULATION**



## ABOUT US

In this section:

- Our network
- Team
- Trustees
- Annual reports
- Recruitment

## Knowledge brokers for a resilient Scotland.

Sniffer is a registered charity delivering knowledge-based solutions to resilience and sustainability issues. We create and use breakthrough ideas and collaborative approaches across sectors, to make Scotland a more resilient place to live, work and play.

Through innovative partnership approaches we share good practice, synthesise and translate evidence, commission new studies and target communications, guidance and training.

Sniffer's vision:





# Sniffer platform

---

## Sniffer's key strengths - what our stakeholders say about us

"Sniffer is seen as a credible, independent authority in environmental research. This position of authority stems from the funding and involvement of government departments and agencies and the scientific rigour of research undertaken."

"Sniffer is seen as providing good value for money and provides research that has benefit beyond the needs of individual organisations, extending to the network of organisations and through our influence on policy to the public at large."

"Sniffer has been seen to be highly successful in bringing together a range of partners from different fields who would not necessarily collaborate were it not for Sniffer."

## WORKING IN PARTNERSHIP

In this section:

Procurement opportunities  
Case studies  
Working in partnership

### LATEST NEWS



Vacancy: Adaptation Scotland Officer

[read more...](#)

Sniffer identifies and brings together key stakeholders who want to address crucial issues relating to resilience and sustainability.

We lead work to identify what needs to be tackled, what the priorities are for Scotland, where Sniffer can help develop solutions and associated funding opportunities.

Each of our knowledge hubs take a leading role in its field through a managed approach to:

- Providing a place for sharing of ideas and creative thinking by drawing in knowledge, connecting resources and influencing solutions
- Identifying and delivering training and guidance needs and 'how to use evidence' for all stakeholders – private, public and third sector
- Delivering the solutions that are identified
- Being inclusive

Our work connects with and builds on initiatives within and beyond Scotland. Our aim is that this approach makes a broad set of stakeholders better informed and engaged.



---

**ASPIS (Games learning based platform)**

**Awareness – memory game**

[http://www.aspis-learn.eu/images/memory/color\\_match.html](http://www.aspis-learn.eu/images/memory/color_match.html)

**The sustainability game**

<http://aspisgame.i-maginary.com/index.html>

**The wisdom bank**

<http://www.wisdombank.org.uk/>

**Sea (Science, Environment, Arts) Communications, Ltd**

(social change design agency)

<http://refreshing.sea-communications.co.uk/>

<http://www.flickr.com/photos/sea-communications/sets/>

<https://vimeo.com/17840636>



## Aims





## Co-design

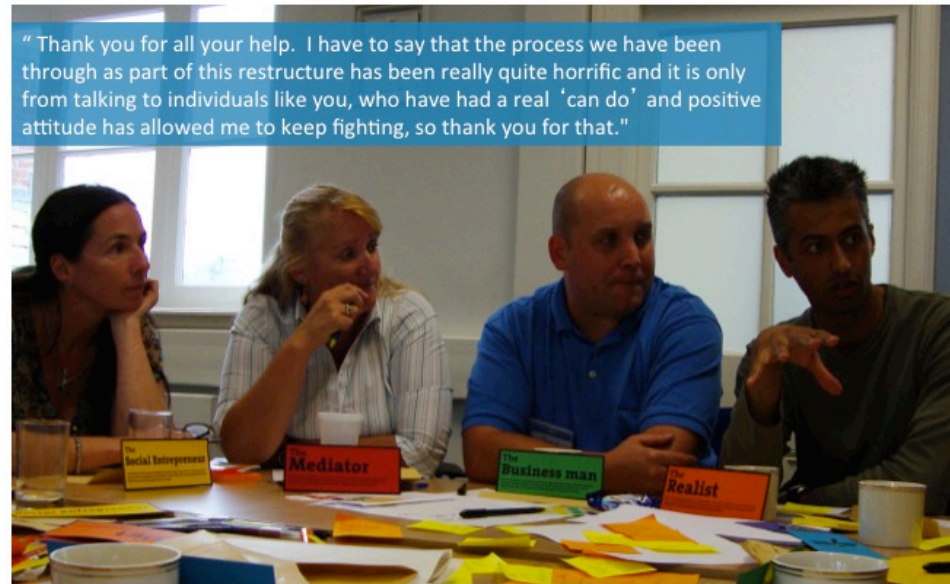
“ You listened to the issues raised without taking a 'one size fits all' approach, I went away feeling encouraged and empowered.

“ The information was invaluable and has given me a clear idea of where I'm heading. The day was fun and imaginative.

## 23 Discovery Days

### Feedback

“ Thank you for all your help. I have to say that the process we have been through as part of this restructure has been really quite horrific and it is only from talking to individuals like you, who have had a real 'can do' and positive attitude has allowed me to keep fighting, so thank you for that.”



# Co-design

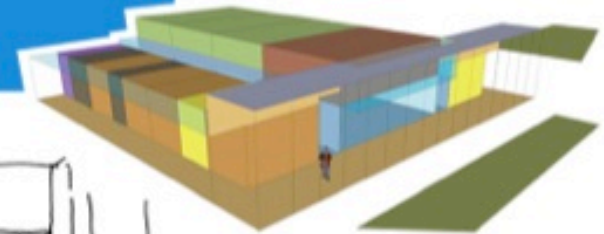




Design, telling the real story

“ The residents already feel that they own the new community centre, even though it doesn't exist yet.

*Claire Arymar*

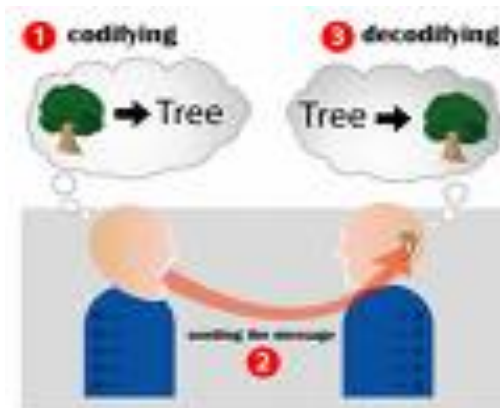


# Recommendations

Recommendations for guidance – be specific on:



- Whom? identify target groups  
groups hard to reach  
groups that may hinder decision
- How?
- When? as early as possible  
– when is that?



Forms of communication  
(regional or minority languages)

## Recommendations

---

### Change mental model:

- Legislation/regulations set minimum standards.... but much more can be done
- Guidance should help to improve practice, not be limited to execute legal requirements – think outside the box!
- PP is to provide ideas, options, not only to validate proposals (limited to comment on proposals)
- Public engagement is one of the best mechanisms for monitoring, particularly in SEA



**Thank you!**

[mrp@civil.ist.utl.pt](mailto:mrp@civil.ist.utl.pt)