



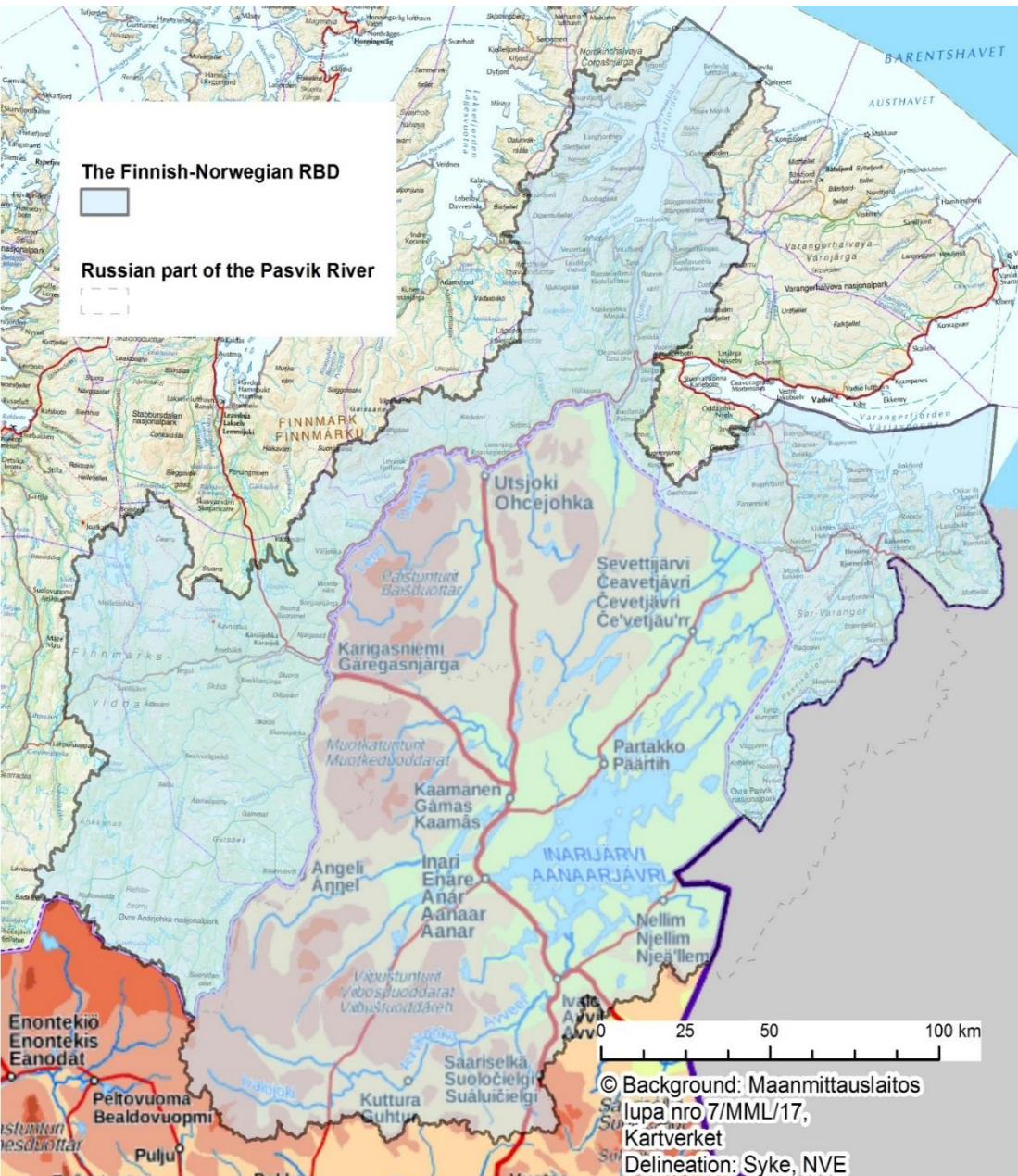
SUOMALAIŠ-NORJALAINEN RAJAVESISTÖKOMISSIO
NORSK-FINSK GRENSEVASSDRAGSKOMMISSJON

Finnish-Norwegian Transboundary Water Commission

Timo Jokelainen 23.5.2017
Director
ELY-center of Lapland

Finnish-Norwegian Transboundary Water Commission

- Agreement signed November 5. 1980 (32/1981)
 - The Finnish-Norwegian Transboundary Water Commission is a body for co-operation and communication between the states.
 - Members are from the regions and municipalities
- Advisory role
- The main tasks
 - Cooperation and contact organization between countries' administration in affairs concerning transboundary waters
 - Submits proposals and statements on matters related to the management of transboundary waters between Finland and Norway
 - Ensures transboundary waters and water ecosystems remain in as natural state as possible for the benefit of local population
 - Secures interests of local inhabitants in both countries in matters concerning use of transboundary waters (equality)



Working area of Finnish-Norwegian Transboundary Water Commission

- Teno / Tana river basin
- Näätämöjoki / Neiden river basin
- Paatsjoki / Pasvik river basin (Russia as an observer)

Special features

- sparsely populated areas with some larger villages (c. 8000 + 20 000 inhabitants)
- Sámi homeland area (the only indigenous peoples of the EU)
- Important spawning rivers for Atlantic salmon
- Arctic area, climate



Composition of the Commission

- Governments of both countries name three members to the Commission
 - one member is from regional environmental administration
 - two members from municipalities of the border region
 - all members have substitutes
- Governments of both countries name one member from each country to work as a chair (or vice-chair)
 - chairmanship changes between countries every year
- Both countries name a secretary for the Commission
- In Finland, chair and secretary are from Lapland ELY-centre (Centre for Economic Development, Transport and the Environment)
- In Norway, chair and secretary are from County Governor of Finnmark



Working of the Commission

- Commission has one meeting per year
 - meetings can be arranged more often if needed
 - Commission is continually working (giving statements, etc.)
- Commission can invite experts to the meetings
- Other authorities have to assist Commission
- Commission gives recommendations about current issues related to transboundary waters
- Commission gives statements on projects and plans
- Water management according to Water Framework Directive has been presented in Commission meetings and Commission has given recommendations for harmonizing this work
- Commission has contributed to the start of several projects
 - ENPI –project: Kolarctic salmon 2011-2013
www.fylkesmannen.no/kolarcticsalmon
 - ENPI-project: Trilateral Cooperation on Environmental Challenges in the Joint Border Area (State and Monitoring of Waters in Border Area)
<http://www.pasvikmonitoring.org/>



What have we learned?

- The Commission is an actor at local, regional and state levels
 - even if the agreement is between two countries, Commission is acting mainly at local and regional levels
- Long-term work, no fast results
 - not a decision-maker, impacts of Commission work are indirect
- Commission creates cooperation structures between authorities in two countries and also outside of Commission work
 - no mandate in fishery – a problem?
- Transboundary Water Commissions can promote cooperation on other environmental issues between countries at all administrative levels
 - for example, improve cooperation with border municipalities
- Important to include the interests of the local people in the work of the Commission

Kiitos, Tusen takk, Thank you!

