



UN-Water Global Analysis
and Assessment of Sanitation
and Drinking-Water

UN-Water Global Analysis and Assessment of Sanitation and Drinking-Water (GLAAS)

Overview and background

European Region highlights

Moving forward

**Regional Workshop on Achieving Equitable Access to Water and
Sanitation: From assessment to action
Geneva, Switzerland, 21 March 2016**



**World Health
Organization**



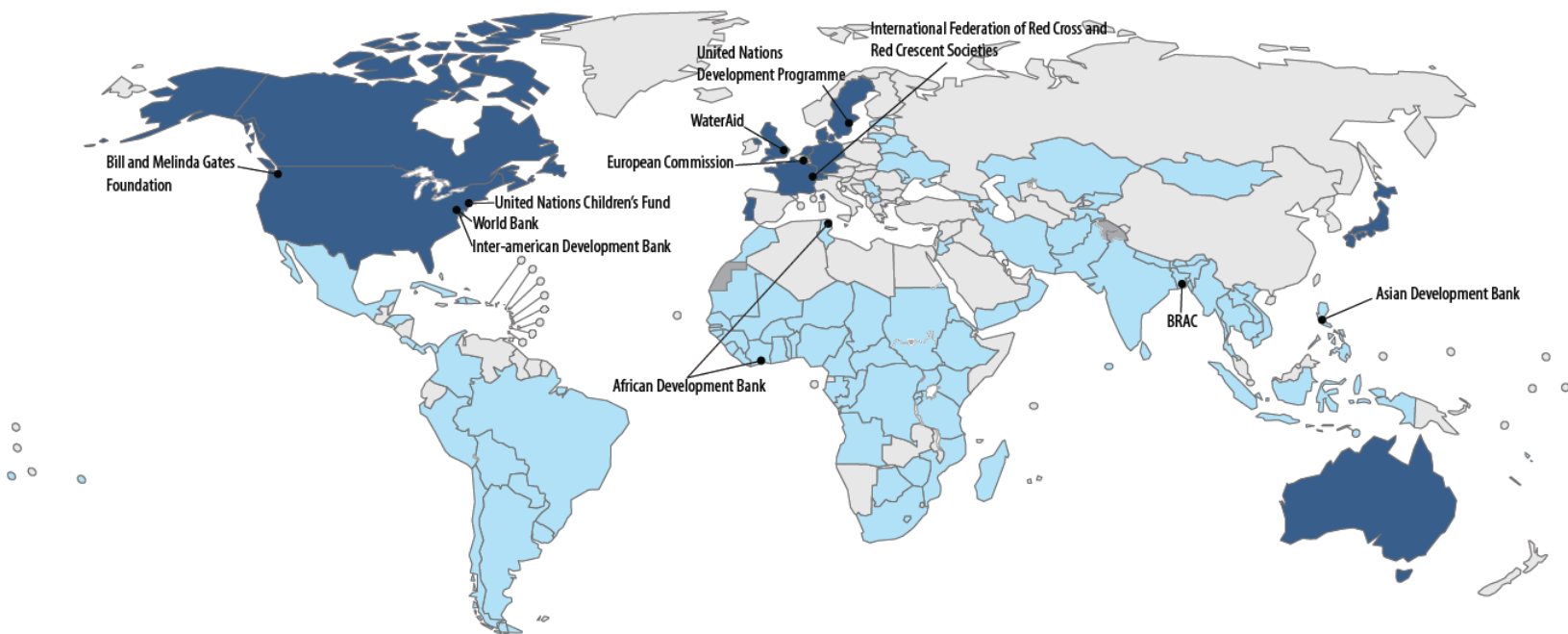
UN-Water Global Analysis and Assessment of Sanitation and Drinking-Water (GLAAS)

- **Monitor the inputs** required to extend and sustain WASH systems and services to all, especially the unserved and disadvantaged groups
- **Support country-led processes** that bring together the many institutions and actors that are involved in delivering WASH services
- **Identify drivers and bottlenecks of progress**, highlight knowledge gaps and assess strengths and challenges across countries

UN-Water GLAAS 2013/2014

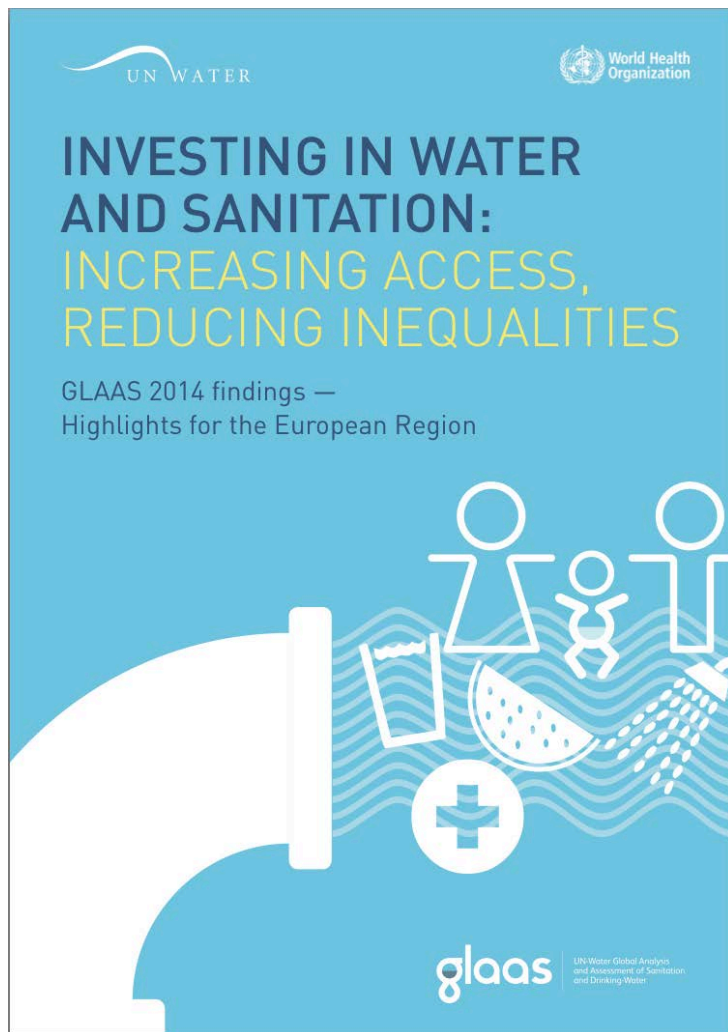
PARTICIPATION IN 2013/2014 GLOBAL ANALYSIS AND ASSESSMENT OF SANITATION AND DRINKING-WATER (GLAAS)

- BI-LATERAL DONOR/EXTERNAL SUPPORT AGENCY
- NOT A PARTICIPANT
- AID RECIPIENT COUNTRY
- NOT APPLICABLE



- **94 participating countries**
 - **12 from the WHO European Region**
- **23 External Support agencies (ESAs)**

GLAAS Highlights from the European Region



Water and Sanitation Policies

- National policies for sanitation and drinking-water exist in each of the 12 countries
- Overall level of implementation of the policies is low
- Only four to five countries indicate that policies are implemented in each subsector

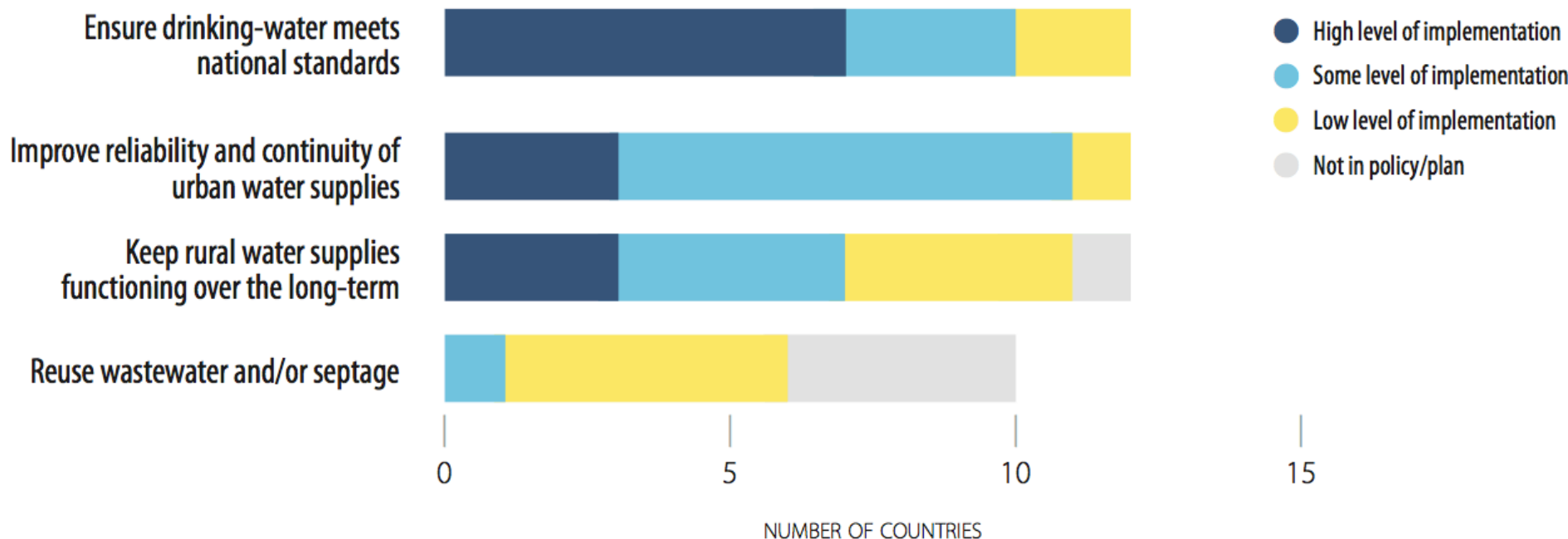
Indicators of policies and measures to ensure equity in WASH services by country

✓ Most (more than 50% of the population served) ● Some (between 25–50% of the population served) ✗ Few (less than 25% of the population served)

COUNTRY	Human right recognized in law		Specific measures are included in national plan to reach disadvantaged groups		Participation procedures are defined in law or policy		Extent to which service users participate in planning				Existence of a public complaint mechanism for populations served			
	Drinking-water	Sanitation	Drinking-water and sanitation	Drinking-water and sanitation	Drinking-water*	Sanitation*	Drinking-water		Sanitation		Drinking-Water		Sanitation	
	National	National	National	National	National	National	Urban	Rural	Urban	Rural	Urban	Rural	Urban	Rural
			Populations living in slums or informal settlements	Populations living in remote or hard to reach areas										
Azerbaijan	Yes	Yes		Yes	Yes	Yes	Moderate	Moderate	Moderate	Moderate	✓	✓	✓	✓
Belarus	Yes	Yes			No	No	Moderate	Moderate	Moderate	Moderate	✓	✓	✓	✓
Estonia	No	No	Yes	Yes	Yes	Yes	Moderate	Moderate	Moderate	Moderate	✓	✓	✓	✓
Georgia	Yes	Yes		Yes	Yes	Yes	Moderate		Moderate		✓	●	✓	●
Kazakhstan	Yes	Yes		Yes	Yes	Yes	High	High	High	High	✗	●	✗	●
Kyrgyzstan	Yes	Yes			Yes	No	Moderate	Moderate	Low	Low	✓	✓	✓	✓
Lithuania	Yes	Yes	No	No	Yes	Yes	Moderate	Moderate	Moderate	Moderate	✓	✓	✓	✓
Republic of Moldova	No	No	No	No	No	No	Moderate	Moderate	Moderate	Moderate	✓	✓	✓	✓
Serbia	Yes	Yes	Yes	No	Yes	Yes	Moderate	Low	Moderate	Low	✓	●	✓	✗
The former Yugoslav Republic of Macedonia	Yes		Yes	Yes	Yes	Yes					✓	✓	✓	✗
Tajikistan	Yes			No	Yes	Yes	Moderate	Low	Moderate	Low	✓	✓	✓	●
Ukraine	Yes	Yes	Yes	Yes	Yes	Yes	Low	Low	Low	Low	✓	✓	✓	✓

* No difference between urban and rural areas apart from Georgia (only in urban areas).

Number of countries with specific measures to improve and sustain services and their level of implementation



Performance indicators used to track progress – main indicators and extent of their usage

CATEGORY TYPE		PERCENTAGE OF COUNTRIES REPORTING USE OF STANDARD INDICATORS FOR DRINKING-WATER	MOST COMMONLY CITED INDICATORS FOR DRINKING-WATER
FINANCIAL	Expenditure	33%	% or ratio spent/allocated
	Cost-recovery	33%	Coverage of costs, recovery of billing
	Cost-effectiveness	25%	Operation and maintenance costs, costs per unit volume produced
EQUITY	Equitable service coverage	58%	Access coverage by geographical area (e.g. broad regions or administrative units)
	Affordability	25%	Ability of the poor to pay for service
SERVICE PROVIDER INDICATORS	Service quality	42%	Quality of water, service time
	Functionality of systems	25%	Working/non-working infrastructure, working/non-working hours
	Institutional effectiveness	25%	Non-revenue water, total staff/per 1000 connection

GLAAS Moving Forward: A new strategy

- Maintaining **breadth while increasing depth**
 - Alternate thematic approach and full reports
- A **modular**, web-based approach to the 4 themes
 - Finance section (TrackFin-Lite) would be mandatory to fill out, other 3 themes optional
- Initial **focus on finance**
 - TrackFin and TrackFin-Lite
- **Improved response to country processes**
 - Better coordination and alignment among monitoring bodies to enhance institution-building and increasing national capacity

New Approach for GLAAS in 2016

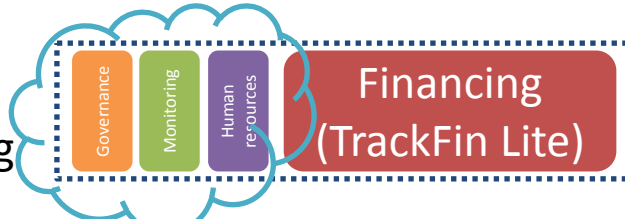
Business as usual



**FULL
GLAAS**



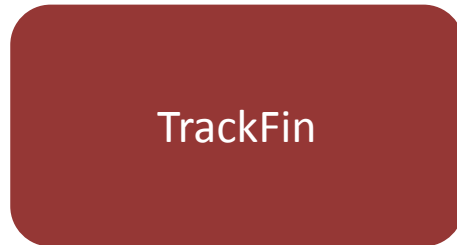
GLAAS 2016:
Focus on financing



**GLAAS LITE
in 94+ countries**

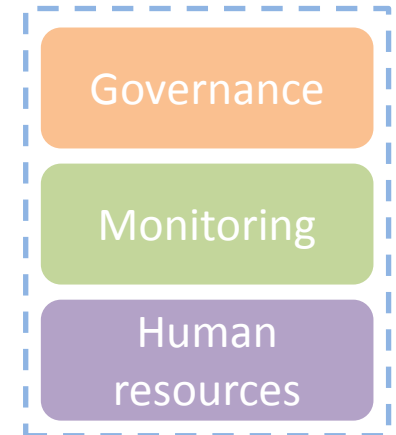
Required for SWA
Behaviour
Monitoring

+



in 4-5 countries

Optional modules



GLAAS Reports: A new direction



Up to now:
Full GLAASes

Tracking Financing in the WASH Sector: TrackFin

Objectives

- Define and test a globally accepted **methodology** to track financing to WASH at national level
- Strengthen national systems for the **collection/analysis of financial information** for policy-making and programming
- Improve **understanding of WASH financing** at national/regional/global levels



Insights into results from Brazil, Ghana and Morocco

- What is the total expenditure in the WASH sector ?
- **How are the funds distributed by WASH services ?**



Water receives largest share

Less for rural (water and sanitation)



UN-Water Global Analysis
and Assessment of Sanitation
and Drinking-Water

Thank you!

www.who.int/water_sanitation/glaas



World Health
Organization

