

SIWI and Climate Adaptation

Integrating Water and Climate Policies
for Resilience and Sustainable Growth

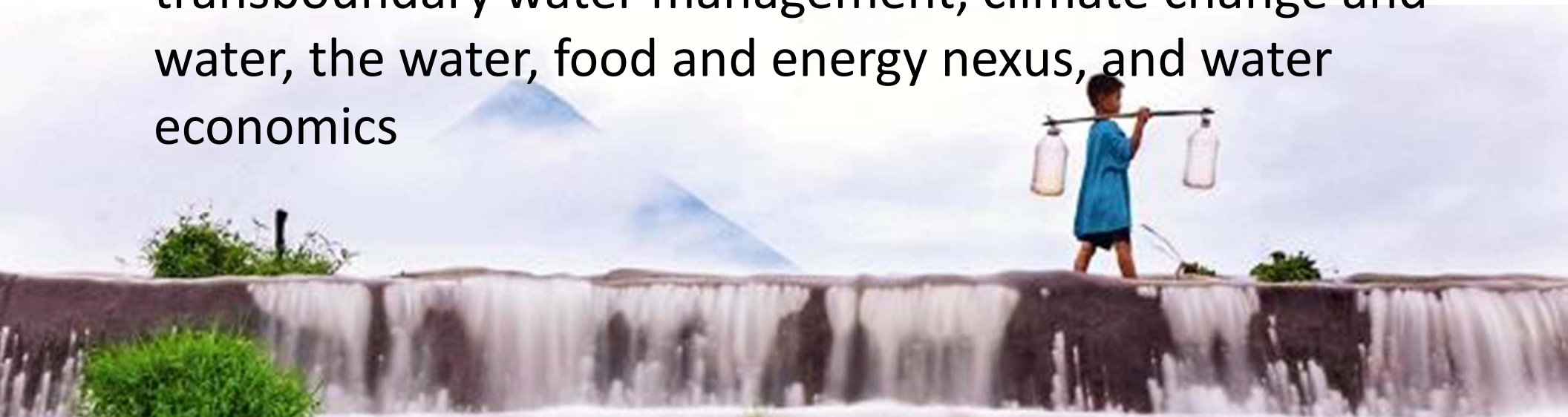
UNECE Workshop on Water and Climate • Geneva, Switzerland

John Matthews, PhD • SIWI Associate johoma@alliance4water.org

13 October 2014

SIWI: A Brief Overview

- The **Stockholm International Water Institute (SIWI)** is a research and policy institute focused on sustainably **managing water resources** by transforming knowledge into **wiser policy and practice**.
- Disseminate knowledge, bridge perspectives, and find new solutions
- Works in five thematic areas: water governance, transboundary water management, climate change and water, the water, food and energy nexus, and water economics



Need for Adaptation

- Many factors drive need for adaptation when it comes to water
 - Growing world population
 - Increased income levels
 - Intensified competition for finite water resources
 - Changing climate and hydrological cycles
- Must integrate water and climate policies in order to support community resilience and sustainable growth

SIWI's Approach

- Generate knowledge on linkages between climate change and water across sectors, and the role of water in adaptation and mitigation
- Raising awareness of the impact of climate change on water in all sectors and how to adapt
- Creating platforms to exchange experiences, knowledge, and perspectives on water and climate
- Building capacity in organizations to account for climate change in project planning, strategies, policies, and laws

SIWI's Services

- Water and climate specialists work in three main areas:
 1. Climate adaptation policy and programme support
 2. Water and climate economics
 3. Vulnerability and options analyses for climate change adaptation
 4. Global/intergovernmental policy processes (UNFCCC)
- Incorporate applied research, advisory services and capacity building modules to address these themes in order to create the most effective water and climate policies and knowledge



Ongoing Partnerships and Initiatives

- Bridging climate policy and practice at the threshold of 2015
- Several on the ground adaptation initiatives in transboundary contexts
- Active participant in UNFCCC events
 - *direct briefing statement + side event on the role of water in adaptation and in connecting adaptation and mitigation in 2013, a side event in 2014; both developed via AGWA*
- Steering Committee member, Policy Team lead, and Co-Chair of Alliance for Global Water Adaptation (AGWA)
- Stockholm World Water Week
- Many other regional and global collaborations and projects for 2015 and onward

SIWI strongly supports and actively advocates for

- A dedicated water SDG
- Water must be clearly addressed and integrated in the Sendai and Paris agreements
- The Sendai outcome, the negotiations on a new set of SDGs, and a new climate agreement that must be carried forward in a coherent manner

For further collaboration & cooperation

- Karin Lexén • karin.lexen@siwi.org • Director, International Processes
- Mats Eriksson • mats.eriksson@siwi.org • Director, Climate Change & Water
- Anna Forslund • anna.forslund@siwi.org • Programme Manager, Climate Change & Water
- John Matthews • johoma@alliance4water.org • SIWI Associate, AGWA Coordinator