



# **Mekong Climate Change & Adaptation Initiative**

## **Tackling transboundary adaptation needs**

**Presented by**

Nguyen Huong Thuy Phan

Climate Change and Adaptation Initiative (CCAI)

Mekong River Commission, Vientiane, Lao PDR

At the Third Workshop on “Water and Adaptation to Climate Change in Transboundary Basins: Making adaptation work”, Geneva 25-26 April, 2012.

# Contents



- Mekong River and the Lower Mekong Basin
- Climate change in LMB
- Climate change impacts in LMB
- Transboundary adaptation needs
- Climate Change and Adaptation Initiative /MRC

# Mekong River and Lower Mekong Basin

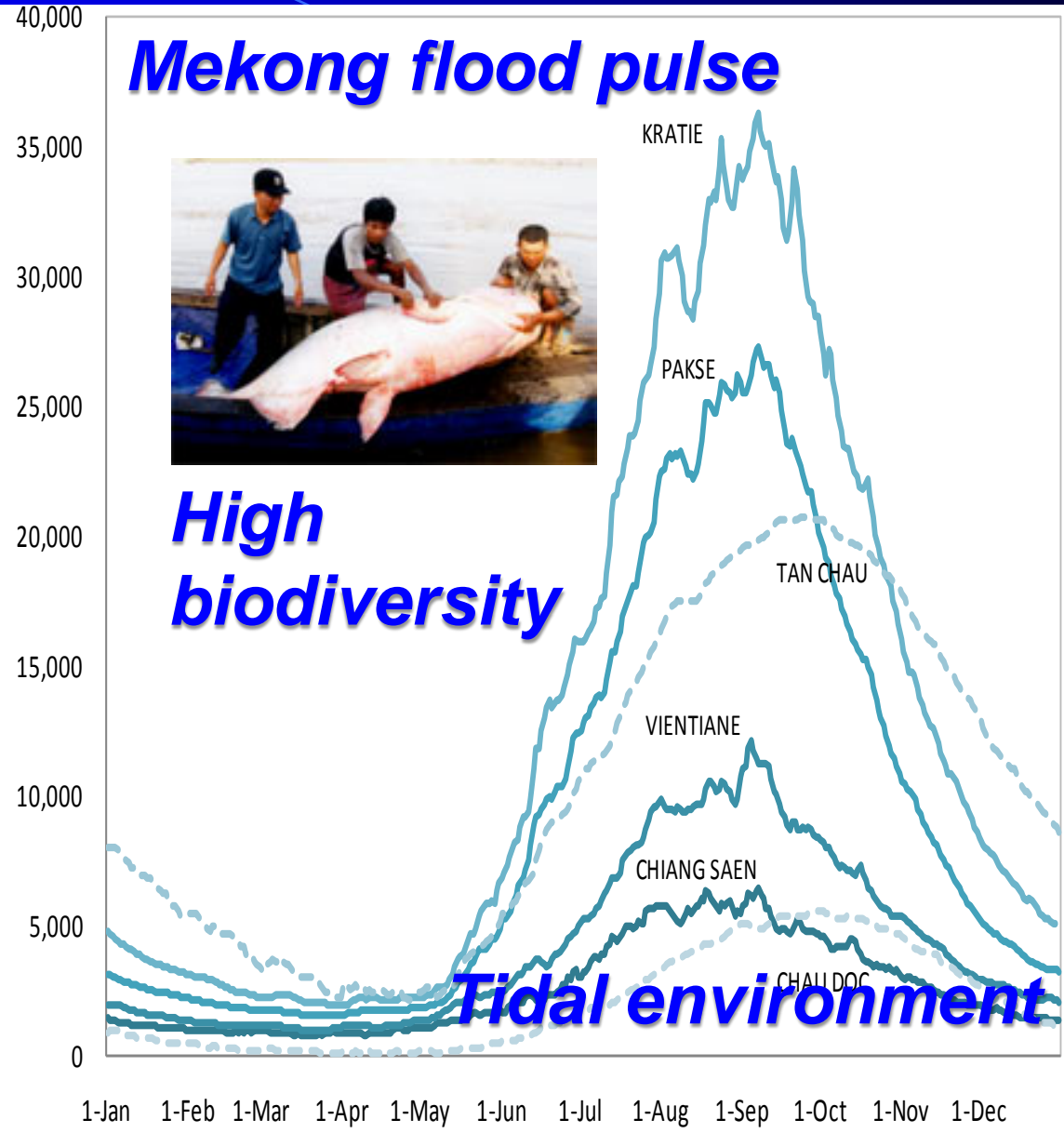


## Mekong flood pulse

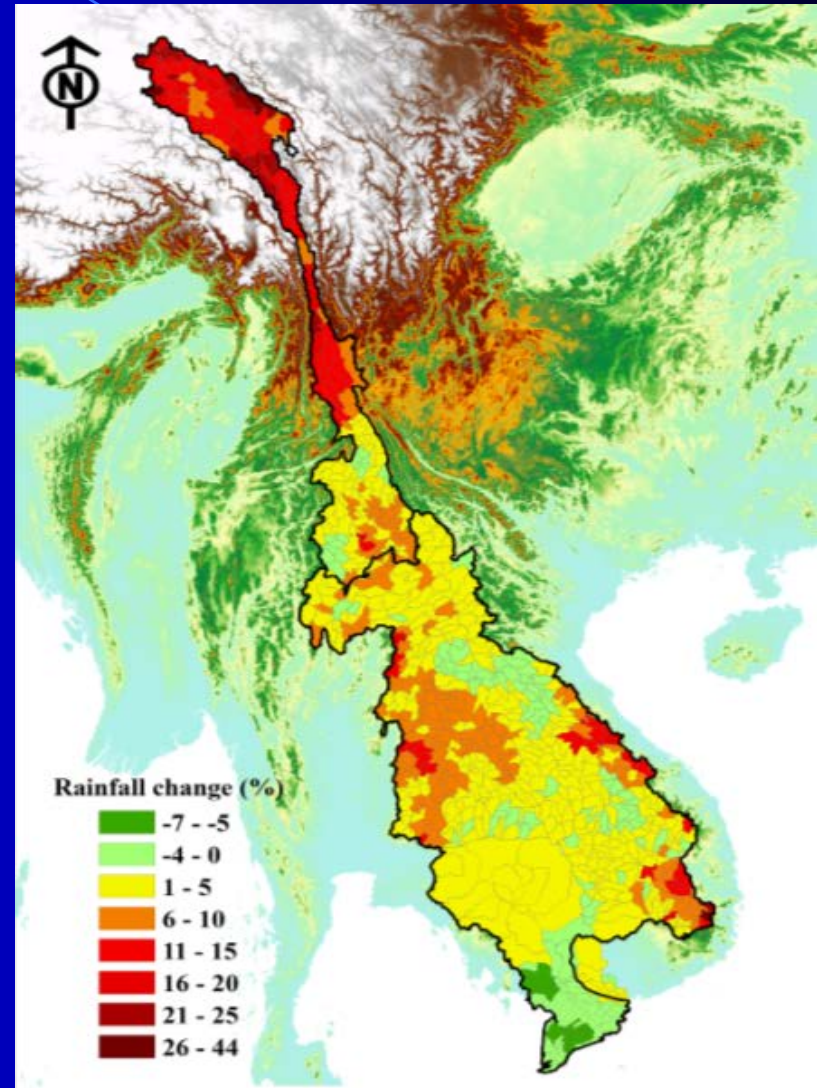
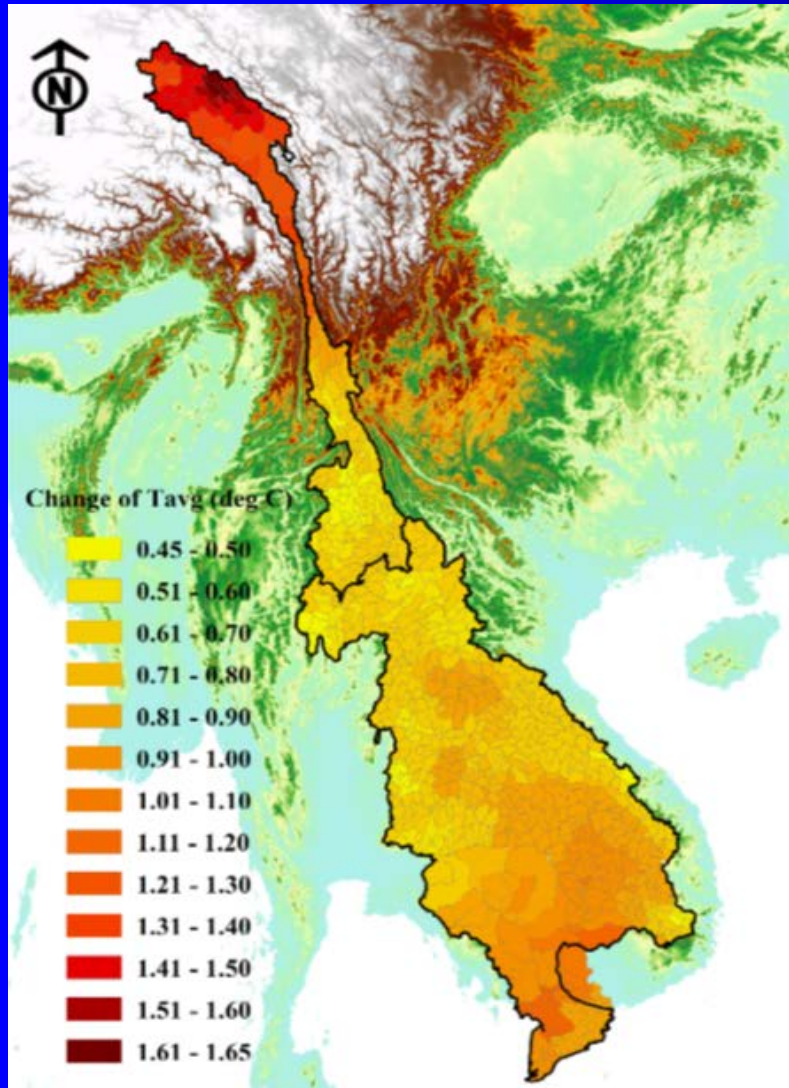


**High biodiversity**

**Tidal environment**



# Climate change in LMB

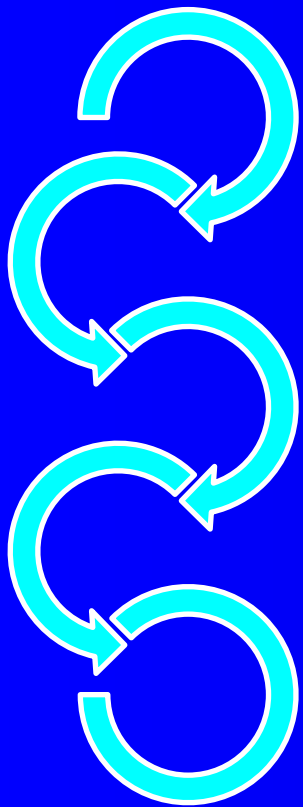


# Climate change impacts in LMB



# Transboundary adaptation needs

## Adaptation actions



Regional-  
Transboundary  
National  
Provincial  
Community  
Household

- ✓ Assess potential transboundary effects of national and lower-level adaptation options
- ✓ Identify options for reducing negative transboundary effects
- ✓ Identify options for collective actions that promote positive transboundary effects

# Mekong Climate Change and Adaptation Initiative (CCAI)



**What**

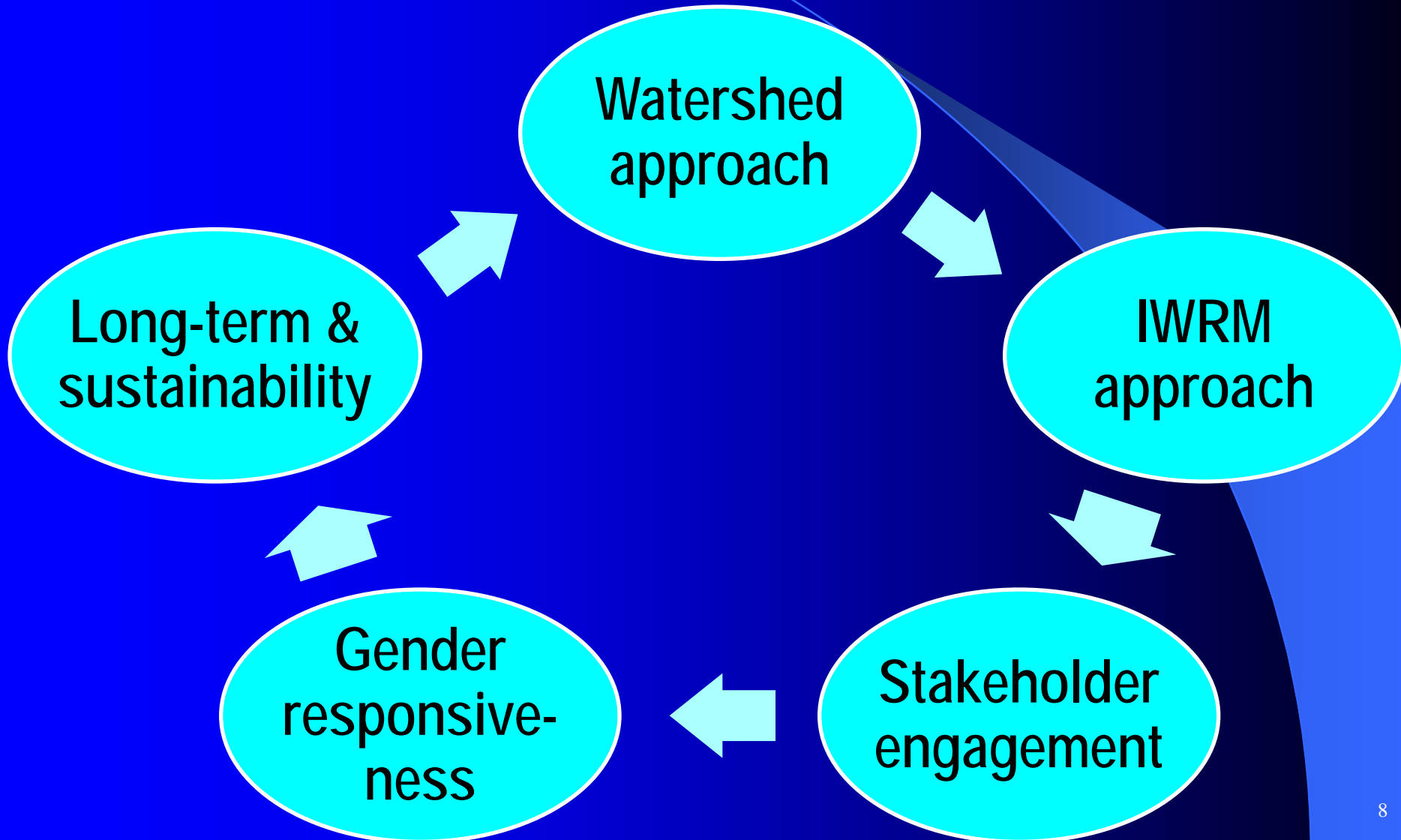
**When**

**Goal**

**Objectives**

“Climate change adaptation planning and implementation is guided by improved strategy and plans at various levels and in priority locations throughout the Lower Mekong Basin.”

# Mekong Climate Change and Adaptation Initiative (CCAI) Approach





# Mekong Climate Change and Adaptation Initiative (CCAI)

## Approach (continued)



**Multiple  
adaptation  
planning steps**

**Multiple  
development  
planning levels**

**Multiple  
development  
sectors**

# Mekong Climate Change and Adaptation Initiative (CCAI)



## Transboundary adaptation actions

- Mekong climate change adaptation strategy and action plan
- Regional climate change scenarios
- Data and Information: baseline, database, monitoring system, CCA status reports
- Basin-wide demonstration and pilot projects
- Capacity building: awareness raising, training, tool box, study visits, ToT, training materials
- High-level roundtables, regional forums and expert meetings

# Mekong Climate Change and Adaptation Initiative (CCAI)

## Lessons learnt and challenges



- Technical competency of the Secretariat
- Political support from Member Countries
- Meaningful partnerships
- Mainstreaming, decentralisation and riparianisation
- Continuous information management
- Effective communication
- Learning and comprehensive M&E



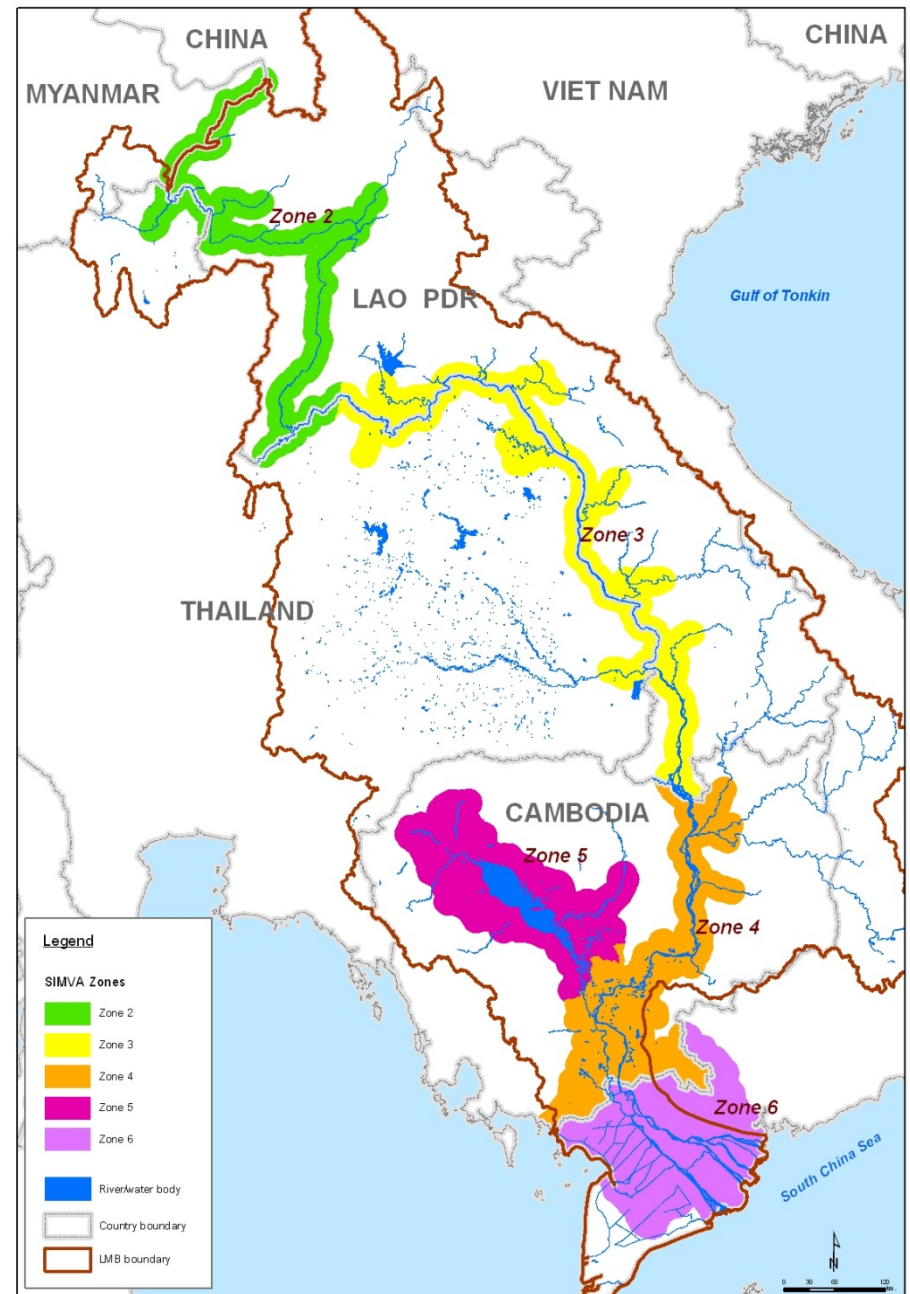
***Thank you!***

Nguyen Hung Thuy Phan  
Climate Change and Adaptation Initiative  
Mekong River Commission  
[thuyphan@mrcmekong.org](mailto:thuyphan@mrcmekong.org)

# Social Impacts Monitoring and Vulnerability Assessment (SIMVA)

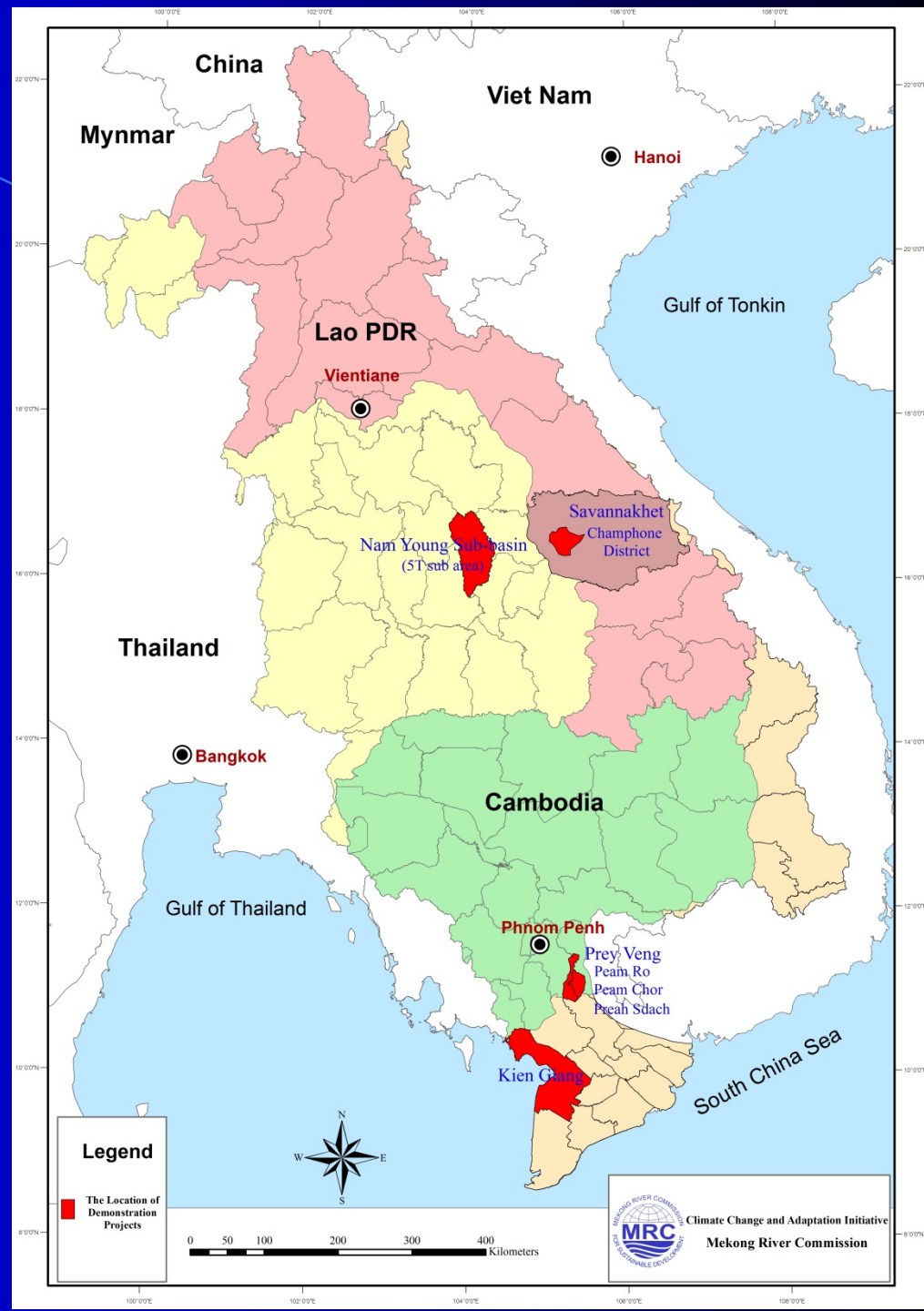
- Assess the reliance of people livelihoods on river's natural resource
- Baseline indicators: vulnerability (8), dependence on fish, irrigation and riverbank cultivation (31), resilience (12), shocks and trends (9), and vulnerability to climate change (10) ◀

Source: *Thim Ly, Debriefing on Social Impact Monitoring and Vulnerability Assessment (SIMVA) Baseline Survey for the Lower Mekong Basin 2010-2011, Presentation at the 1st CCAI team learning event, 24 Feb. 2012*




# Demonstration projects

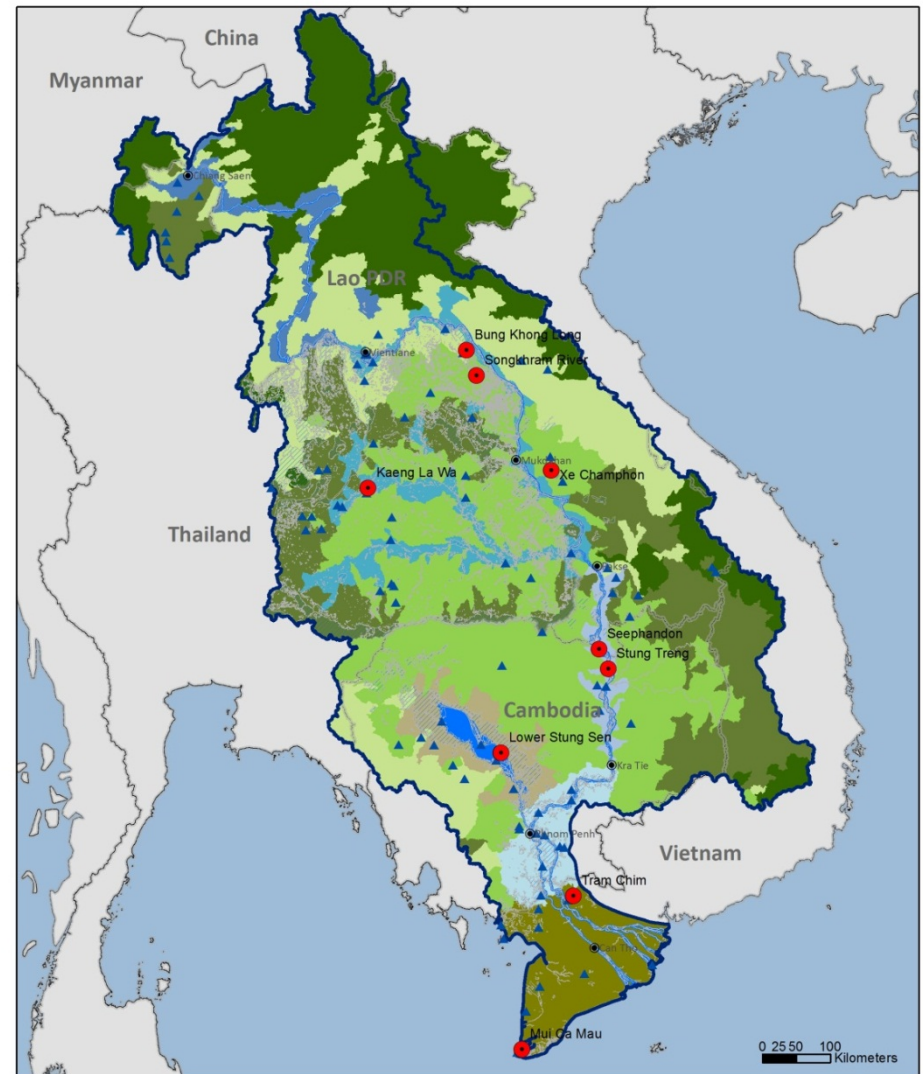
- **Cambodia**
  - Prey Veng (Peam Ro, Pream Chor, Preah Sdach and Me Sang Districts)
- **Lao PDR**
  - Savannakhet (Champhone District)
- **Thailand**
  - Nam Yang Basin (Tributary to Chi River)
- **Vietnam**
  - Kien Giang Province 



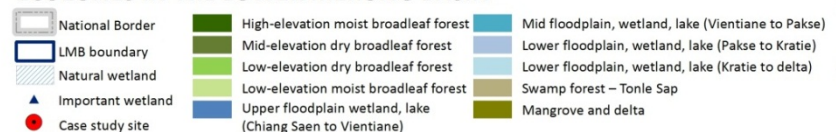
# Wetland vulnerability assessment

1. Baseline assessment of wetlands' biodiversity, ecosystem services and livelihoods,
2. Sensitivity and vulnerability (hot spot identification) and
3. Site specific and regional adaptation options. 

Source: Peter-John Meynell, *Basin-wide Wetland Vulnerability*, Presentation at the MRC 3rd Regional Workshop on Basin-wide Climate Change Impact and Vulnerability Assessment for Wetlands of the LMB for Adaptation Planning, 2-3 Feb. 2012



## ECOZONES IN THE LOWER MEKONG BASIN



icem

Data Source:  
ICEM 2012,  
WWF 2005  
MRC GIS Database