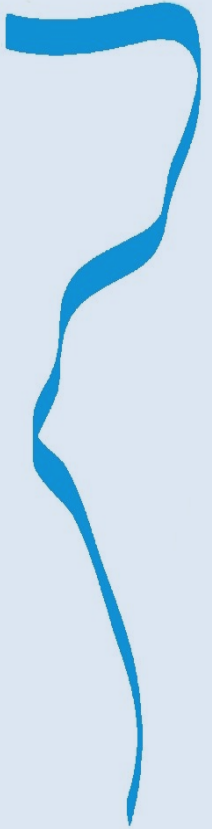




Adaptation of the Meuse to the Impacts of Climate Evolutions



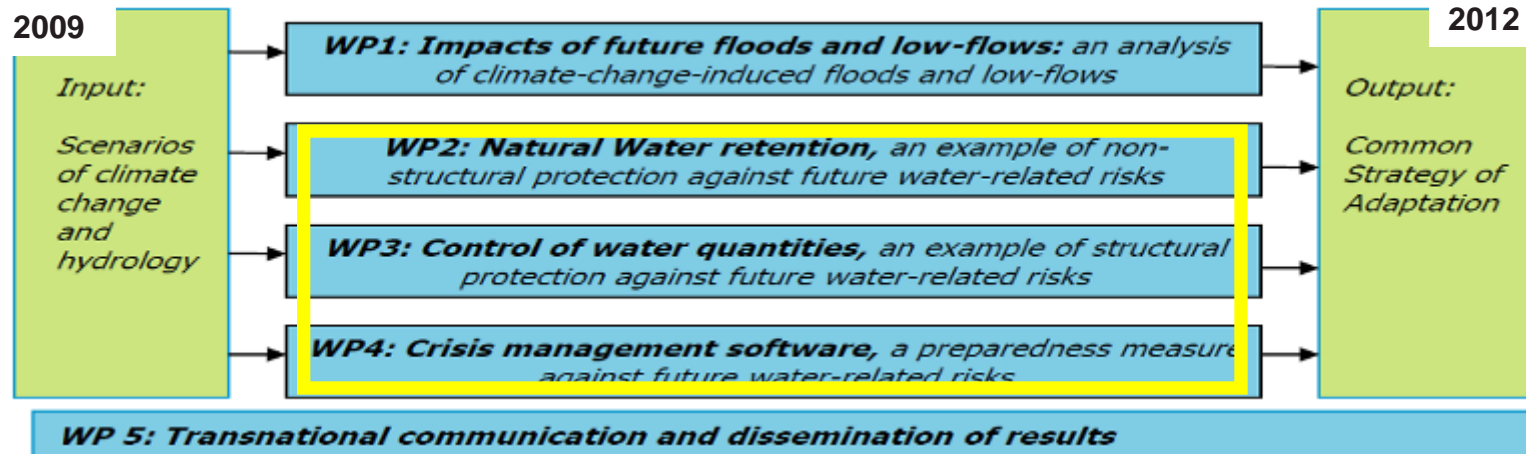
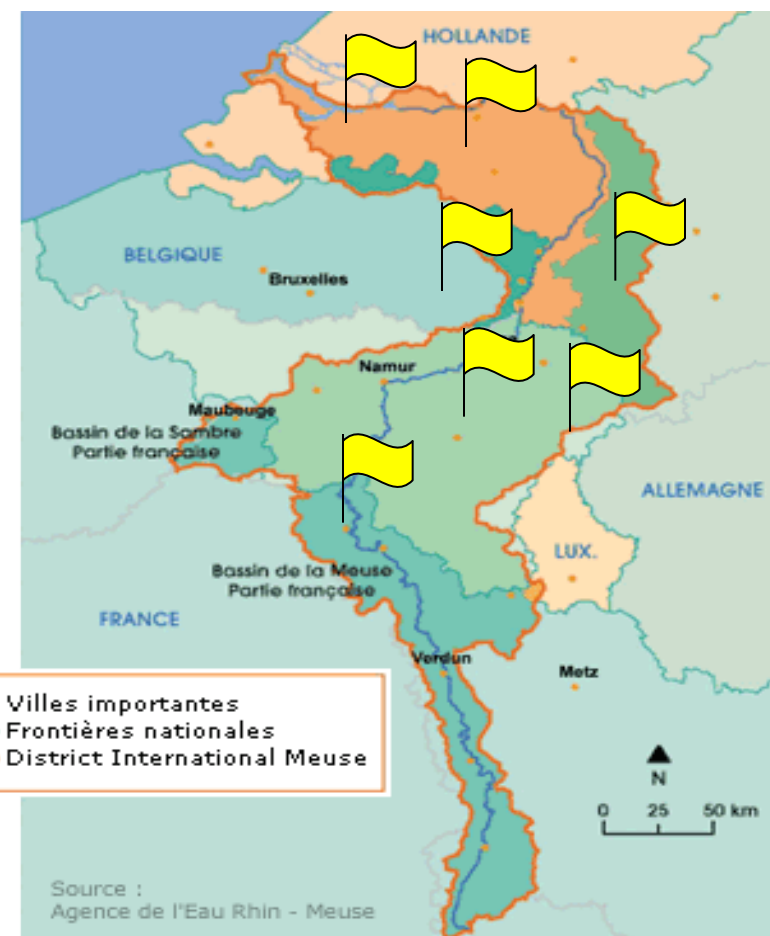
**Transnational adaptation measures against
floods and low-flows**

the AMICE project on the Meuse river basin

* demonstrate that action can be taken right now

* both floods and low-flows

* international cooperation required

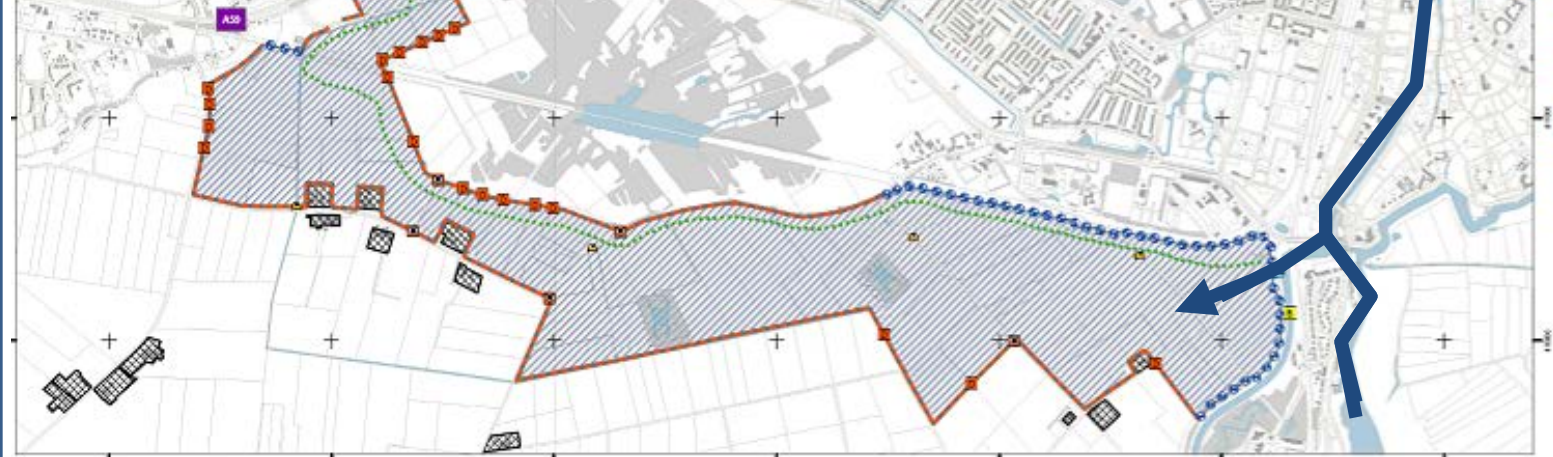
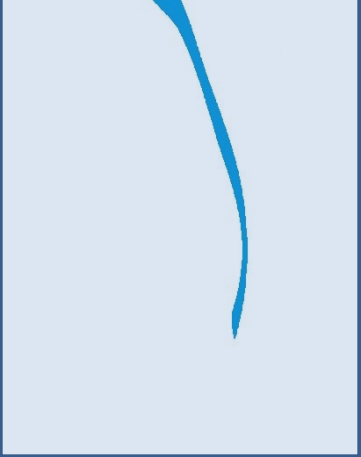


* Ecologically efficient
restoring wetlands for their buffer effect on the water levels





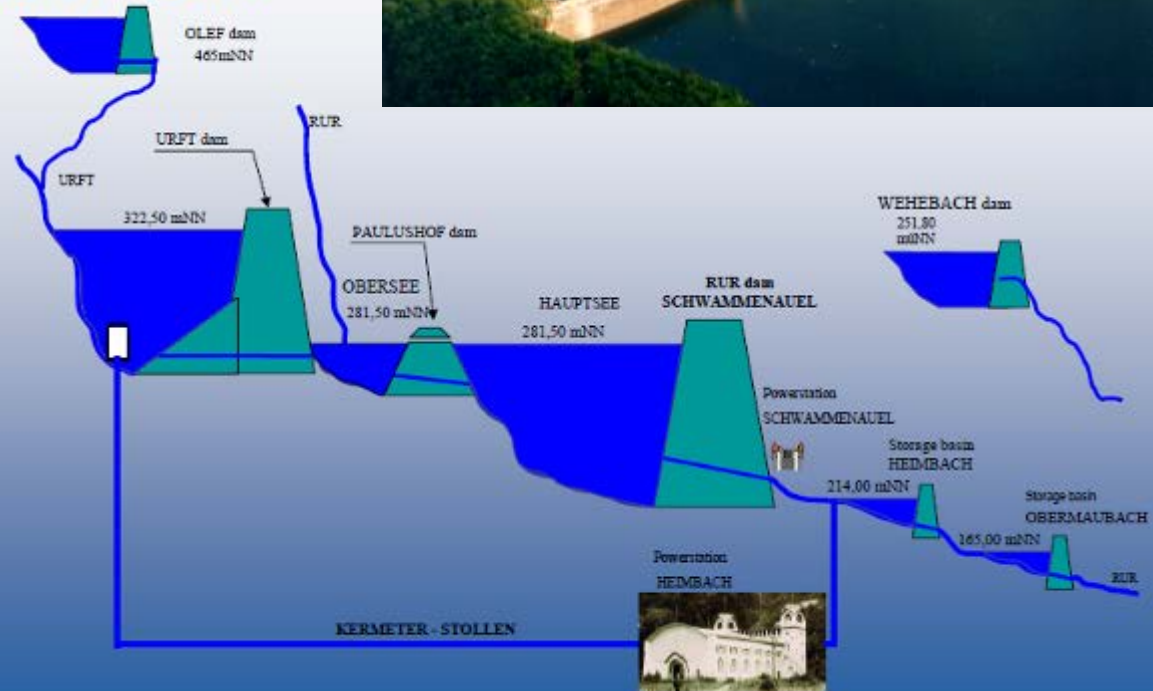
* Flexible infrastructures
Multifunctional areas for temporary water storage



*** Positive spill-over**
guarantee water provision to all users in the future decades



Large Dam System



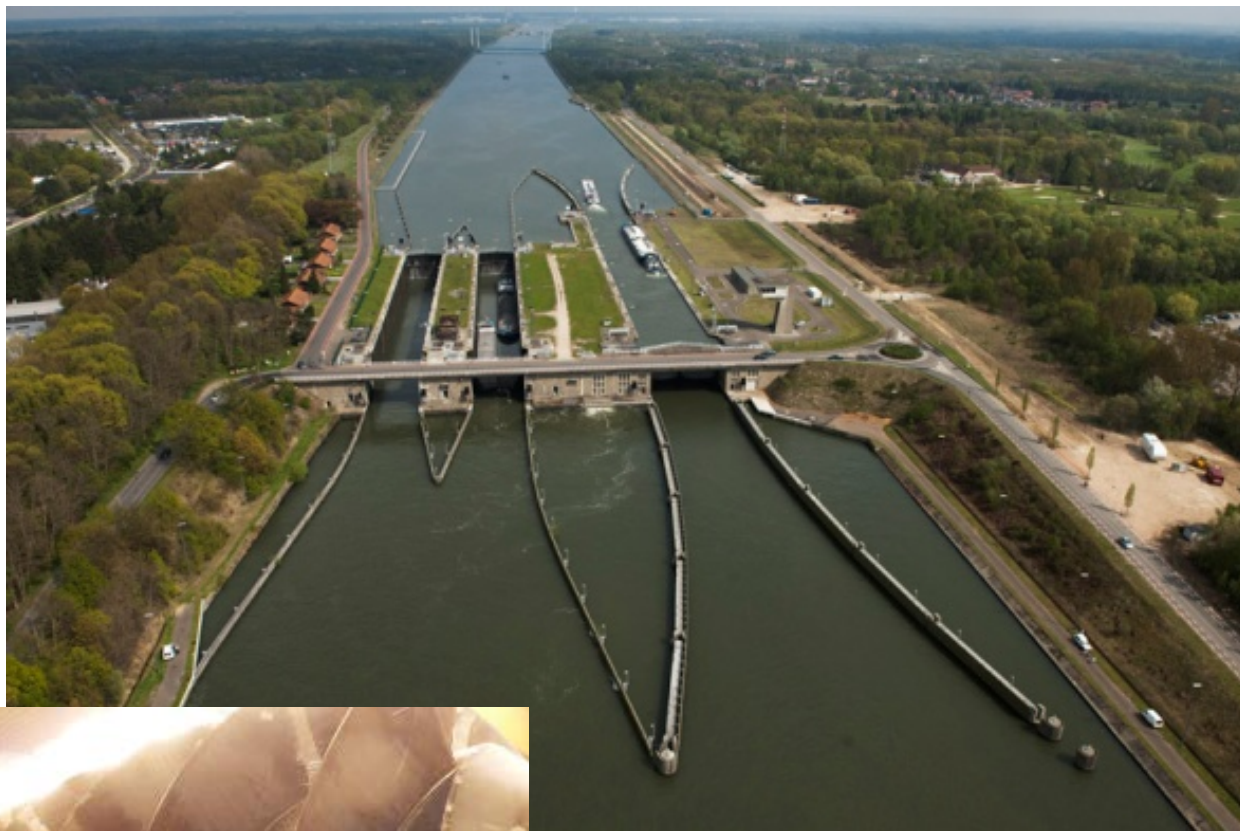


amice
meuse
maas

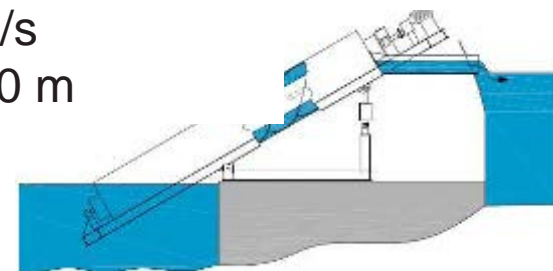


* Win-win measure

Pumps to reduce water consumption and produce energy

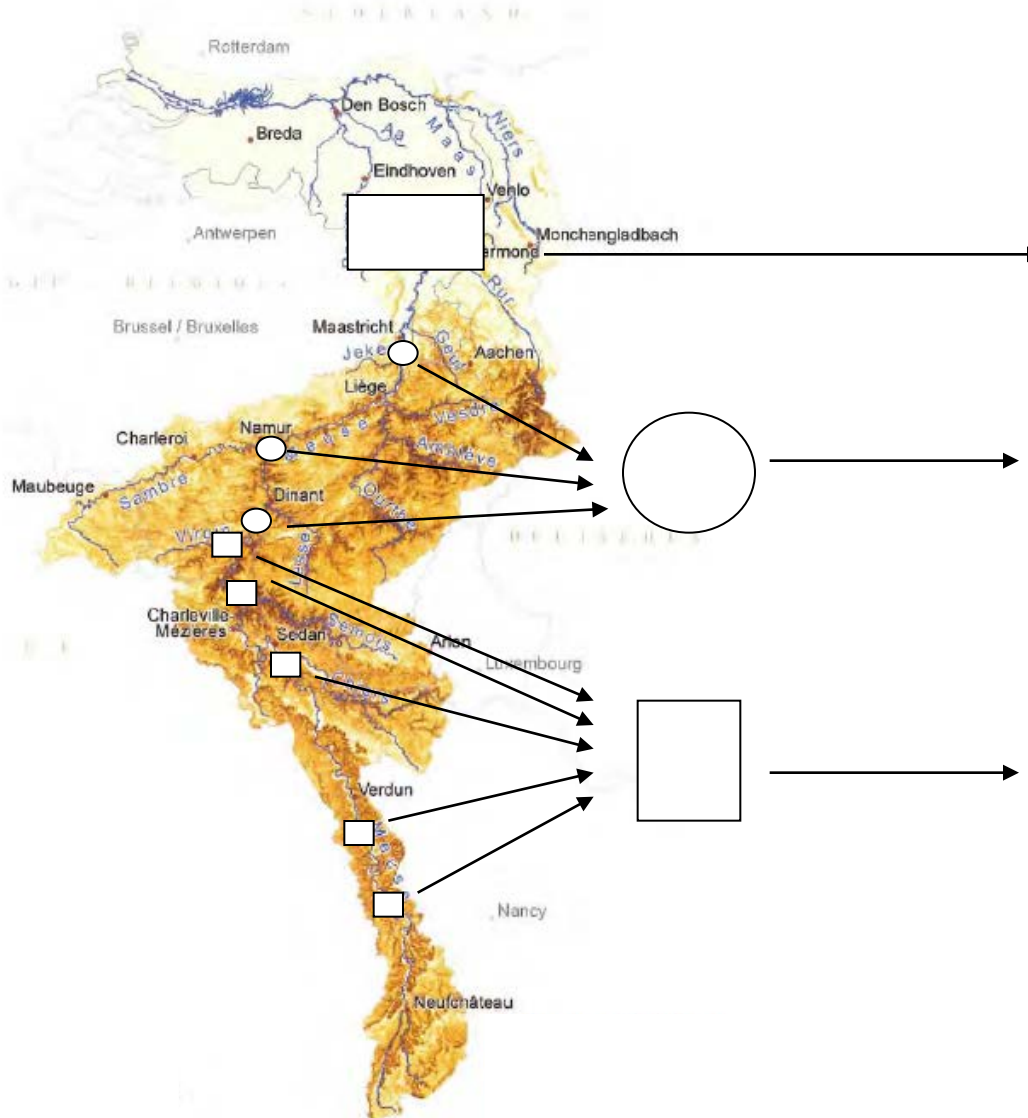


Each lock :
pumping capacity:
15 m³/s
fall : 10 m





*** No-regret measure**
international flood crisis management exercises



AMICE
Transnational
Exercise



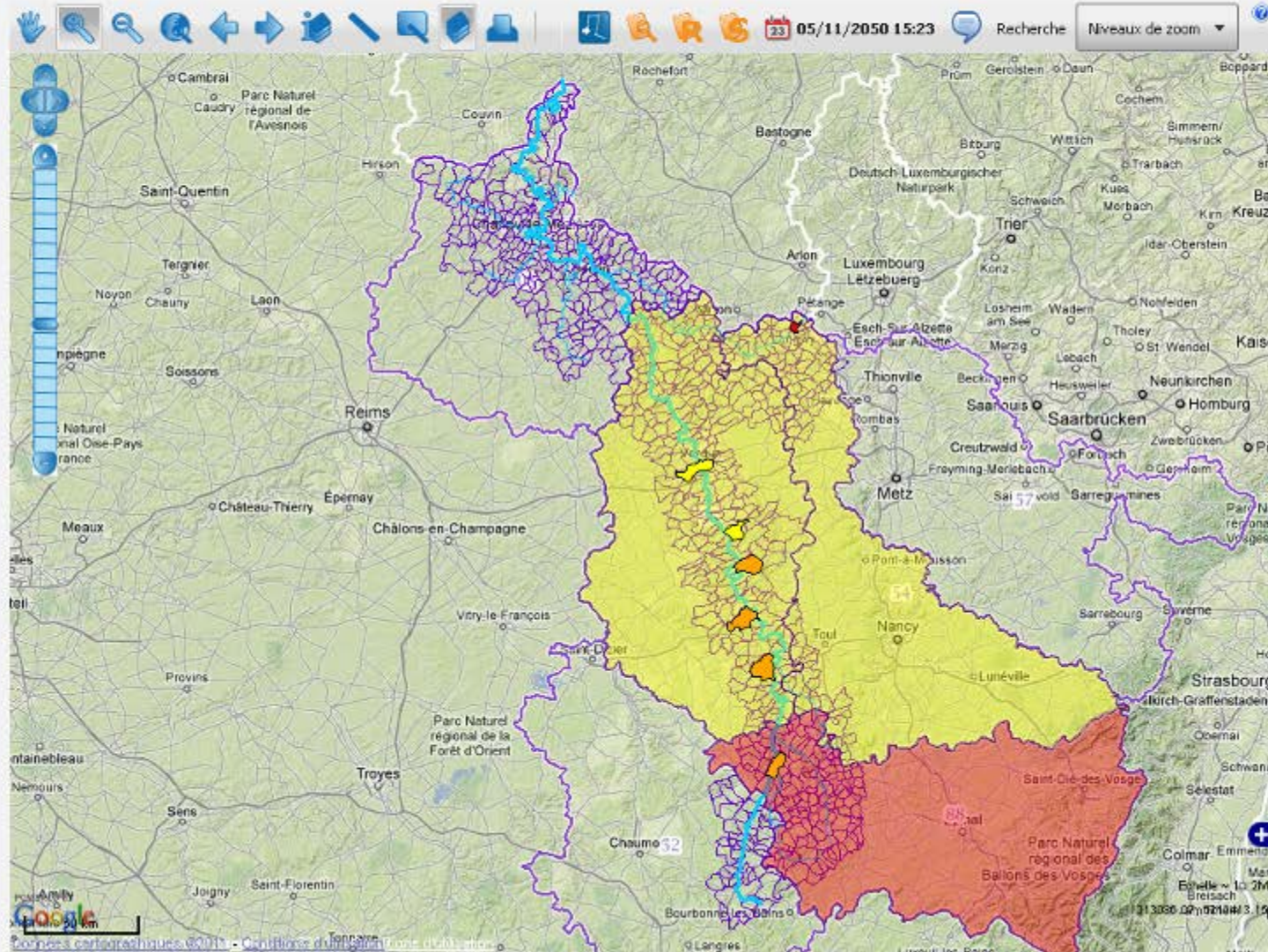
Exercise in Wallonia – 16 & 18 November



Paramètres de la Carte

- Suivi des Enjeux
- Relevés
 - Vigilance
 - Alerte
 - Crise
 - Decrue
- Catégories des enjeux
- Autre
 - Entreprise
 - Habitat
 - Exploitation Agricole
 - Réseau
 - Etablissement Receptif du Public (ERP)
- Enjeux Départementaux
- Enjeux Communaux
- Crues et Inondation
- Stations de référence
 - Vigicrue
 - Contours d'inondation
- Situations opérationnelles
- Situation des communes
- Pas d'information ou situation hors crue
 - En veille - PCC non activé
 - PCC activé - Gestion autonome de l'inondation
 - renforts extra communaux requis ou accord
- Situation des COD
- Pas d'information ou situation hors crue
 - Suivi - Risque de début d'inondation
 - Appui
 - Direction
 - Direction renforcée
- Synthèses
- Ressources
- Hydrographie
- Tous les affluents
 - Principaux affluents
 - 1 - Service Meuse

Carte



CONCLUSIONS

- **Solutions already exists**
- **Human factor most limiting**
- **No measure implemented only for CC adaptation**

www.amice-project.eu

www.amice-film.eu

Final conference March 13th-15th, 2013



Climate Changing ? Meuse Adapting !

