



UN/CEFACT
Simple, Transparent and Effective Processes
For Global Commerce

REQUIREMENTS SPECIFICATION MAPPING

(RSM)

Business Domain: Accounting and Audit

Business Process: Accounting Entry

Document Identification: CEFACT/Forum/2006/TBG/BSxxx

Title: Accounting Entry

UN/CEFACT International Trade and Business Processes Group: TBG12

Document location : <http://www.unece.org/...>

Version: 3.09
Release: 2
Date of approval: 2006-01-01

Document Summary

Document Item	Current Value
Document Title	Business Requirements Specification Accounting Entry
Date Last Modified	2011/03/11
Current Document Version	3.092
Status	Final
Document Description (one sentence summary)	Specification that describes the data model and targeted technology solutions for the accounting entry process

Contributors

Name	Organization
Alain BERNARD	NEURONICS Belgium
Alex PAJON	EIC Informatique France
Benoît MARCHAL	PINEAPPLE Soft Belgium
Dominique FAVERIO	EDIFICAS France
Frédérique LEBLOND	Ordre des experts-comptables France
Gérard COLO	LOGIC SYSTEM France
Jan BERGSTRÖM	Alphabet AB – Stockholm Sweden
Michel LESOURD	EDIFICAS France
Olivier DE BONHOME	EDIFICAS Europe
Robert LEMENSE	EDIFICAS Belgium
Georges CATTENO	CEGID Informatique
Alain LAPALUS	CCMX Informatique
Jean-Louis MATHIEU	EDIFICAS France
Christian TALTAS	IBIZA Informatique

Log of Changes

Issue No.	Date of Change	Changed By	Summary of Change
1.0	2008-11-08	TBG12	Submission 1 st version TBG17/ICG
2.0	2010-04-22	TBG12	Submission 2 nd version TBG17
3.0	2010-08-31	TBG12	Add Amortization and multiple entries
3.2	2010-10-10	TBG12	Internal audit
3.092	2011/03/10	TBG12	Harmonization CCL10A with TBG17

Table of Contents

1	REFERENCE DOCUMENTS	4
2	INTRODUCTION	5
3	OBJECTIVE	6
	DEFINITION OF TERMS	7
3.1	TARGET TECHNOLOGY SOLUTION(S)	8
4	INFORMATION PAYLOAD TO BE IMPLEMENTED	9
4.1	CONCEPTUAL DATA MODEL	9
4.1.1	<i>Accounting Entry definition</i>	9
4.1.2	<i>Accounting Entry Conceptual data model</i>	10
4.1.3	<i>Canonical data model</i>	11
5	BUSINESS INFORMATION ENTITY REFERENCE	12
5.1	BASIC BUSINESS INFORMATION ENTITIES	13
5.2	AGGREGATE BUSINESS INFORMATION ENTITIES.....	15
5.3	ASSOCIATION BUSINESS INFORMATION ENTITIES	18
5.4	QUALIFIED DATA TYPE	20
5.5	ASSOCIATED DOCUMENTATION	20
5.5.1	<i>Core components UN/CEFACT Registry version used</i>	20
5.5.2	<i>Root Level Message Assembly</i>	20

1 Reference documents

- CEFAC/TMWG/N090R10 UN/CEFACT's Modeling methodology, November 2001
http://www.unece.org/cefact/umm/UMM_Revision_10_2001.zip
- CEFAC/TMG/N093 UN/CEFACT Modeling Methodology (UMM) User Guide
http://www.unece.org/cefact/umm/UMM_userguide_220606.pdf
- CEFAC/ICG/004 UN/CEFACT Forum - Operating Procedures between the TBG, ATG & ICG, ECE/TRADE/C/CEFACT/2009/19 31 August 2009
http://www.unece.org/cefact/cf_plenary/plenary09/cf_09_19E.pdf UN/CEFACT ISO/TS 15000-5 ebXML Core Components Technical Specification – Part 8 of the ebXML Framework, Version 2.01 (TRADE/CEFACT/2004/28)
http://www.unece.org/cefact/ebxml/CCTS_V2-01_Final.pdf
- CEFAC/ICG/005 UN/CEFACT Business Requirements Specification template
<http://www.uncefactforum.org/ICG/Documents/ICG%20Home/Business%20Requirements%20Specification%20V1r5%20approved.zip>
- CEFAC/ICG/006 UN/CEFACT Requirements Specification Mapping template version 1 September 2005
<http://www.uncefactforum.org/ICG/Documents/ICG%20Home/ICG%20requirements%20specification%20mapping%20V1R0%2020050928.zip>
- CEFAC/TBG/BS002/Revision – BRS Accounting Entry Journal Process version 1.14 October 2007
<http://www.uncefactforum.org/TBG/TBG12/TBG12%20Documents/BRS%20accounting%20Entry%20v1%2014.doc>
- TRADE/CEFACT/2008/MISC.1 *Decision 08-9 ECE/TRADE/C/CEFACT/2008/29/Add.5*
- UN/EDIFACT – ENTREC message
- UN/CEFACT TBG17 Submission Template, v3pt14 June 2009
- UN/CEFACT – Core Components Library version CCL 10A
http://www.unece.org/cefact/codesfortrade/codes_index.htm#cc
- OMG Unified Modeling Language Specification, Version 1.3 June 1999, and later
- BRS Accounting Entry; TBG Steering Committee approval - 22 June 2007
- BRS Accounting Entry 1.2 – September 2008
- RSM Accounting Entry 1.21_final – September 2009

2 Introduction

This version has been expanded to open the possibility for having multiple accounting entries into the same batch and at the same time offer the opportunity to include amortization information.

The current practice of exchange of business documents by means of telecommunications – usually defined as e-Business presents a major opportunity to improve the competitiveness of companies, especially for Small and Medium Enterprise (SME) whatever its size can be.

About all the functions within any entity provide input to accounting entries and accounting entries in turn will provide output towards aggregated figures from accounts.

Each individual accounting entry, with standardized tagged elements is the basis for a very powerful tool and from this point on, the [no longer missing] link between e-Business and e-Accounting / WebLedger.

Carrying on an initiative of EDIFICAS Europe, the European Expert Group 11 (EEG11) – Accounting and auditing – started the discovery of elements for accounting entries in 2004, inter alias based upon the ENTREC Edifact message.

The Accounting Entry has been developed with contributions and submissions from several parts of Europe and collaboration of United States.

This first version of the Business Requirements Specification (BRS) is presented for comments from the other regions.

After a period of public exposure TBG12 will draft the final version of the BRS addressing comments received and forward for further processing through the UN/CEFACT Forum process with the goal of developing a UN/CEFACT standard document.

The purpose of this document is to define globally consistent accounting entry processes for the worldwide accounting and auditing domains, using the UN/CEFACT Modelling Methodology (UMM) approach and Unified Modelling Language to describe and detail the business processes and transactions involved.

The structure of this document is based on the structure of the UN/CEFACT Business Requirements Specification (BRS) document reference CEFACT/ICG/005.

3 Objective

The objective of this document is to standardize the information entities and the business processes, of the Accounting Entry used by the enterprises in the Journal, Ledger, and Audit Business Processes.

An Accounting Entry is the translation in monetary measurement unit of any transaction or transaction step that currently affects the financial situation of the enterprise.

An Accounting Entry is a business document supported by a justificatory document which may be either internal or external, such as a payroll, a voucher, a spreadsheet, a provision for amortization, a provision for revenue, an invoice, a bank statement, etc.

Accounting Entries are sequentially recorded in chronological order into one journal or several auxiliary sub-journals. Journalized validated accounting entries are definitely irreversible.

The Accounting Entry standard is valid for financial accounting, cost accounting, provisional or budgetary accounting, and more generally for any kind of various and numerous analytical accounting processes.

The business document consists of a set of Business Information Entities (BIE), which are preferably taken from libraries of reusable business information entities. The contents of the business document and the Business Information Entities are presented using class diagrams.

The possibilities offered by this revision of the “Accounting Entry” data model have been enhanced to convey asset appropriate information to amortization software.

This version contains a set of supplementary optional elements on tangible or intangible assets useable for calculation of subsequent amortization.

Definition of terms

Account: A ranking and recording unit of entries corresponding to expenditure and receipts relating to a particular period and/or purpose.

Contains either the detail of all entry lines booked into this account and/or the totals summarising debits and credits.

Accounting entry, book entry, entry: Technique that consists in recording the equal debit and credit monetary values of a transaction into suitable accounts, accounting books.

Accounting (entry) line, entry items: corresponding to the debit or credit amount (that is part of an accounting entry), posted on a ledger account and recorded in a journal. In addition to the amount and the account identifier, the accounting entry line must include the date of the transaction, the explanation of the entry, a reference toward the journal and the identification of the source document originating the debit or credit amount.

Bookkeeping: Activity that consists in sorting and recording into accounts the financial flow related to any transaction and economic fact occurring in an entity.

Irreversibility: The fact that an accounting entry posted into accounts and books can not be undone or altered.

Journal: Book or file in which each accounting entry is recorded chronologically prior to be carried over into the ledger book.

The [central or main] journal is generally split into secondary journals dedicated to a type of transactions such as “sales invoices”, “purchase invoices”, “bank account”, “petty cash”, “wages”, “depreciations”, etc. Accounting practice regulations related to the journal process guarantee the immutability and prevent any addition or removal of accounting entry.

Recording Accounting Entry: See Accounting entry

Matching: Match mark. Action of putting a mark, a character or a string of characters vis-à-vis opposite amounts of two or more postings in an account which indicates the relation between them; e.g. the credit amount of a payment and the debit amount of the corresponding invoice.

Matching describes as well the action of putting a mark in front of amounts as well as the matching process itself.

Ticking: Tick mark or check mark

Action of putting a sign vis-à-vis an amount or a post in a ledger to indicate it has been verified; the sign itself.

Ticking describes as well the action of putting a sign on the paper as well as the control process itself of the element

Symbol used by the accounting professional to indicate the work he did comparing the figures posted into an account with those on the document justifying the entry or when he verified correctness of a calculation.

(Accounting) Voucher: Basis of the posting into account and support of evidence, the voucher is a document that attests to the reality of an operation, authenticates its conclusion, is the originator of accounting entry, and is used for audit control matters.

3.1 Target technology solution(s)

The canonical class diagram of the accounting entry presented in this document should be used to generate the UN/CEFACT ebXML standard schema of the accounting entry in the accounting and audit domains. This RSM document together with the corresponding BRS document and the ebXML schema are intended to be the basis for the standard accounting entry.

4 Information payload to be implemented

4.1 *Conceptual data model*

4.1.1 Accounting Entry definition

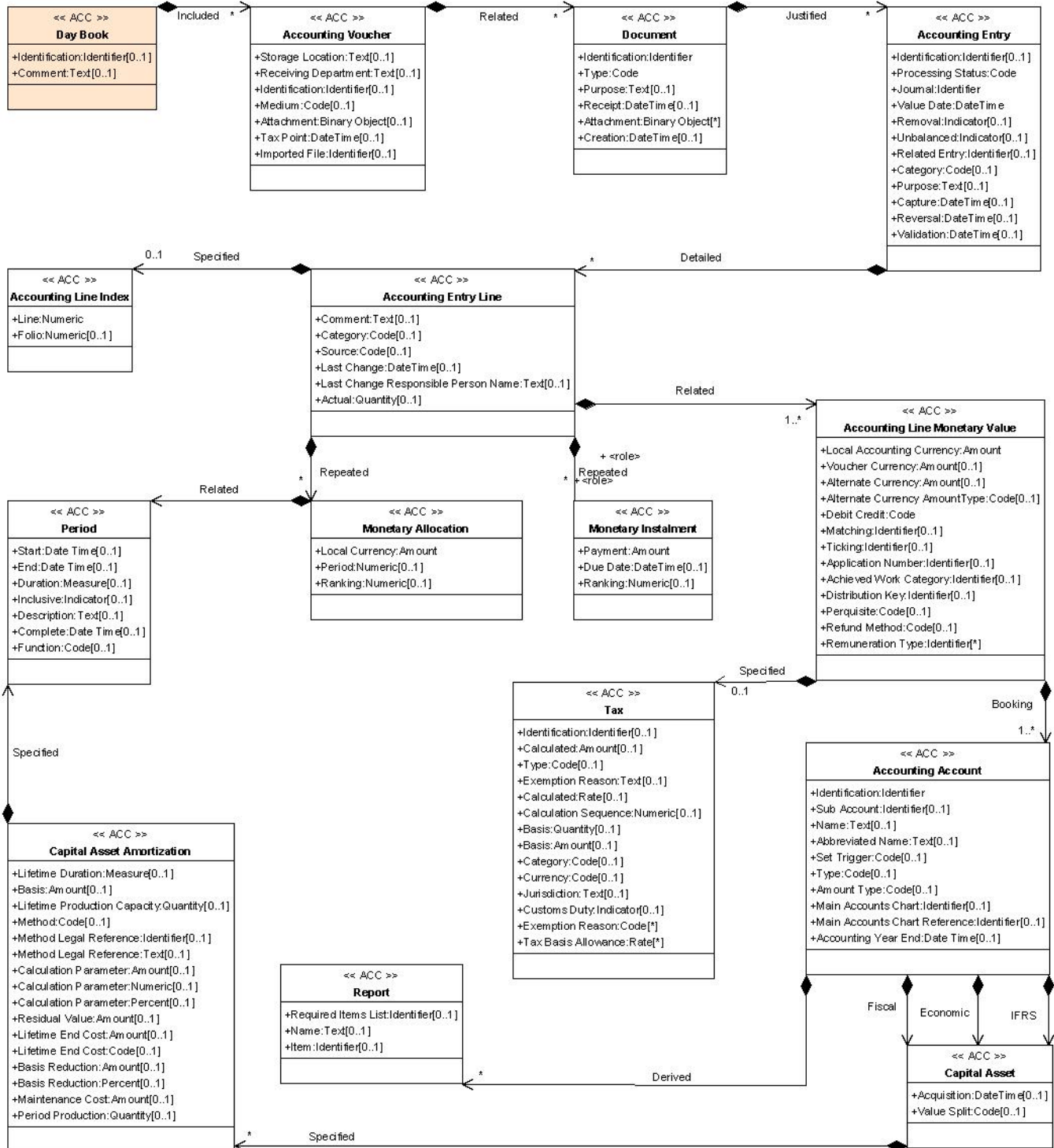
Description: Accounting Entry is a message that enables recording of financial debit and credit flows into accounts.

The Accounting Entry defines accounts, amounts, references, terms of payment, quantities, currencies, taxes recorded into accounting books. A set of supplementary elements concerns entry lines booked on tangible or intangible assets accounts. Those elements enable the association of amortization information on any (*new*) asset booked on an asset account. This information is used by amortization software engine that in turn will produce the corresponding periodical amortization accounting entry in a dedicated amortization sub-journal.

Accounting entries are most often originally recorded in an organization based on the “journal” in which entries are captured in a chronological order. In order to alleviate and for best location of entries capture practice, the journal is subdivided into specialized sub-journals such as “sales”, “purchases”, “cash”, etc... in conformance with the list and number of appropriate sub-journals as convenient for the entity. Obviously most often one message will contain more than one single accounting entry; this means that a “accounting message” is needed to enclose all accounting entry messages into a “day book”. This “container” message has been developed in the TBG12 project “Accounting Message”/ “Wrap Message” that is available in the UN-Cefact standard messages library as of version 10A.

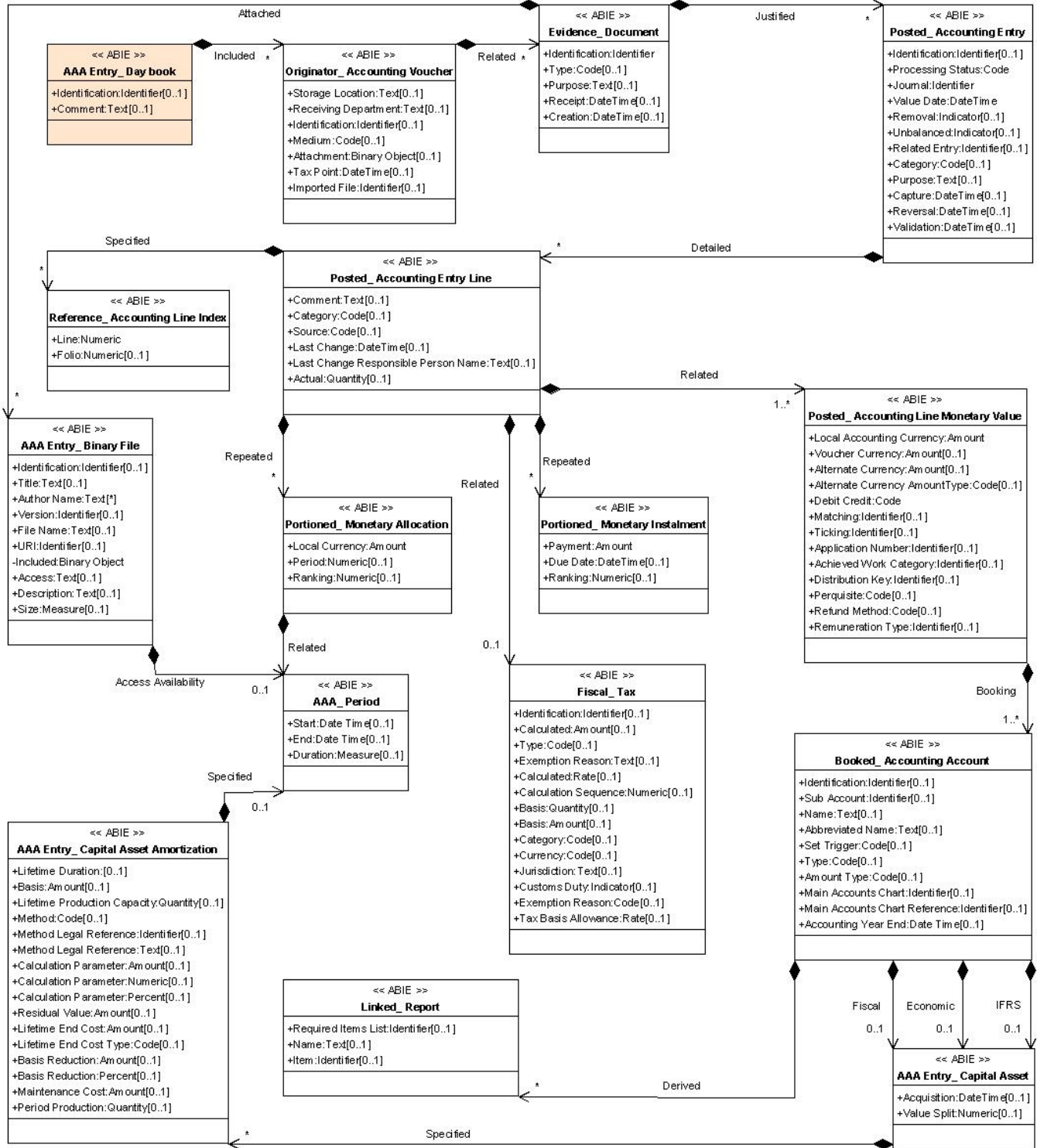
4.1.2 Accounting Entry Conceptual data model

cd: Conceptual Accounting Entry v3.07



4.1.3 Canonical data model

Canonical Accounting Entry v3.11



5 Business information entity reference

This section contains the list of all the Business Information Entities that are both used within the canonical data model and are variations from the standard Core Components, including the UN/CEFACT Registry version that served as the reference point.

5.1 Basic Business Information Entities

This section identifies any restrictions that have to be applied to the BBIE in the context in which it is being used.

BBIE dictionary entry name	Data Type	Usage Rules	Core Component dictionary Entry Name	Content Component Restrictions			Supplementary component Restrictions		
				Restriction Type	Restriction Value	Expression Type	Supplementary Component Name	Supplementary Value	
Originator_Accounting Voucher. Medium	Code Type		Originator_Accounting Voucher. Medium. Code	EDIFI-CASEU_AccountingVoucherMedium_D09B.xsd					UN02000109
Evidence_Document. Type	Code Type		Evidence_Document. Type. Code	UN-ECE_DocumentNameCode_D09B.xsd					UN02000160
Posted_Accounting Entry. Processing Status	Code Type		Posted_Accounting Entry. Processing Status. Code	EDIFI-CASEU_AccountingEntryProcessing_D09B.xsd					UN02000107
Posted_Accounting Entry. Removal	Indicator Type	Default value = False	Posted_Accounting Entry. Removal. Indicator	Boolean True, False					
Posted_Accounting Entry. Unbalanced	Indicator Type	Default value = False	Posted_Accounting Entry. Unbalanced. Indicator	Boolean True, False					
Posted_Accounting Entry. Category	Code Type		Posted_Accounting Entry. Category. Code	EDIFI-CASEU_AccountingEntryCategory_D09B.xsd					UN02000104
Posted_Accounting Entry Line. Category	Code Type		Posted_Accounting Entry Line. Category. Code	EDIFI-CASEU_AccountingEntryLineCategory_D09B.xsd					UN02000105
Posted_Accounting Entry Line. Source	Code Type		Posted_Accounting Entry Line. Source. Code	EDIFI-CASEU_AccountingEntryLineSource_D09B.xsd					UN02000106
Posted_Accounting Line Monetary Value. Alternate Currency Amount Type	Code Type		Posted_Accounting Line Monetary Value. Alternate Currency Amount Type. Code	EDIFI-CASEU_AlternateCurrencyAmount_D09B.xsd					UN02000111
Posted_Accounting Line Monetary Value. Debit Credit	Code Type		Posted_Accounting Line Monetary Value. Debit Credit. Code	UN-ECE_StatusDescriptionCodeAccountingDebitCredit_D09B.xsd					UN02000103
Booked_Accounting Account. Set Trigger	Code Type		Booked_Accounting Account. Set Trigger. Code	UN-ECE_DocumentNameCode_D09B.xsd					
Booked_Accounting Account. Type	Code Type		Booked_Accounting Account. Type. Code	EDIFI-CASEU_AccountingAccountType_D09B.xsd					UN02000101

BBIE dictionary entry name	Data Type	Usage Rules	Core Component dictionary Entry Name	Content Component Restrictions			Supplementary component Restrictions		
				Restriction Type	Restriction Value	Expression Type	Supplementary Component Name	Supplementary Value	
Booked_ Accounting Account. Amount Type	Code Type		Booked_ Accounting Account. Amount Type. Code	EDIFI-CASEU_AccountingAmountType_D09B.xsd					UN02000102
Fiscal_ Tax. Type. Code	Code Type		Fiscal_ Tax. Type. Code	UN-ECE_DutyTaxFeeTypeCode_D09B.xsd					UN02000015
Fiscal_ Tax. Category	Code Type		Fiscal_ Tax. Category. Code	UN-ECE_DutyorTaxorFeeCategoryCode_D09B.xsd					UN02000014
Fiscal_ Tax. Currency	Code Type		Fiscal_ Tax. Currency. Code	ISO_ISO3AlphaCurrencyCode_20100407.xsd					UN02000004
Fiscal_ Tax. Exemption Reason	Code Type		Fiscal_ Tax. Exemption Reason. Code	EDIFI-CASEU_TaxExemptionReason_D09B.xsd					UN02000108
Posted_ Accounting Line Monetary Value. Perquisite	Code Type		Posted_ Accounting Line Monetary Value. Perquisite. Code	Enumeration EDIFICASEU_AccountingPerquisite_D10B.TXT					UN02000135
Posted_ Accounting Line Monetary Value. Refund Method	Code Type		Posted_ Accounting Line Monetary Value. Refund Method. Code	Enumeration EDIFICASEU_RefundMethod_D10A.TXT.					UN02000136
AAA Entry_ Capital Asset Amortization. Method	Code Type		AAA Entry_ Capital Asset Amortization. Method. Code	Enumeration EDIFICASEU_AmortizationMethod_D10A.TXT.					UN02000137
AAA Entry_ Capital Asset Amortization. Lifetime End Cost Type. Code	Code Type		AAA Entry_ Capital Asset Amortization. Lifetime End Cost Type. Code	Enumeration EDIFICASEU_LifetimeEndCost_D10B.TXT.					UN02000138

5.2 Aggregate Business Information Entities

This section identifies any restrictions that have to be applied to the standard ABIEs being used.

ABIE Business Term	Aggregate Core Component dictionary Entry Name	Inclusions (BBIEs to be included)	Exclusions (BBIEs to be excluded)	ASBIE
AAA Entry_ Day Book	Day Book	Identification. Identifier Comment. Text		AAA Entry_ Day Book. Voucher. Included. Evidence_ Document
Originator_ Accounting Voucher. Details	Accounting Voucher. Details	Storage Location. Text Receiving Department. Text Identification. Identifier Medium. Code Tax Point. Date Time Imported File. Identifier Attachment. Binary Object		Originator_ Accounting Voucher. Related. Evidence_ Document
Evidence_ Document. Details	Document. Details	Identification. Identifier Type. Code Purpose. Text Receipt. Date Time Creation. Date Time		Evidence_ Document. Justified. Posted_ Accounting Entry
Posted_ Accounting Entry. Details	Accounting Entry. Details	Identification. Identifier Processing Status. Code Journal. Identifier Value Date. Date Time Removal. Indicator Unbalanced. Indicator Related Entry. Identifier Category. Code Purpose. Text Capture. Date Time Reversal. Date Time Validation. Date Time		Posted_ Accounting Entry. Detailed. Posted_ Accounting Entry Line
Posted_ Accounting Entry Line. Details	Accounting Entry Line. Details	Comment. Text Category. Code Source. Code Last Change. Date Time Last Change Responsible Person Name. Text Actual. Quantity		Posted_ Accounting Entry Line. Specified. Reference_ Accounting Line Index Posted_ Accounting Entry Line. Repeated. Portioned_ Monetary Allocation Posted_ Accounting Entry Line. Repeated. Portioned_ Monetary Instalment Posted_ Accounting Entry Line. Related. Posted_ Accounting Line Monetary Value. Posted_ Accounting Entry Line. Related. Fiscal_ Tax
Posted_ Accounting Line Monetary	Accounting Line Monetary Value. Details	Local Accounting Currency. Amount		Posted_ Accounting Line Monetary Value. Booking.

ABIE Business Term	Aggregate Core Component dictionary Entry Name	Inclusions (BBIEs to be included)	Exclusions (BBIEs to be excluded)	ASBIE
Value. Details		Voucher Currency. Amount Alternate Currency. Amount Alternate Currency Amount Type. Code Debit Credit. Code Matching. Identifier Ticking. Identifier Application Number. Identifier Achieved Work Category. Identifier Distribution Key. Identifier Perquisite. Code Refund Method. Code Remuneration Type. Identifier		Booked_ Accounting Account
Portioned_ Monetary Allocation. Details	Monetary Allocation. Details	Local Currency. Amount Period. Numeric Ranking. Numeric		Portioned_ Monetary Allocation. Related. AAA_ Period
Portioned_ Monetary Instalment. Details	Monetary Instalment. Details	Payment. Amount Due Date. Date Ranking. Numeric		
Delimited_ Period. Details	Period. Details	Start. Date Time End. Date Time Duration. Measure		
Reference_ Accounting Line Index. Details	Accounting Line Index. Details	Line. Numeric Folio. Numeric		
Booked_ Accounting Account. Details	Accounting Account. Details	Identification. Identifier Set Trigger. Code Type. Code Amount Type. Code Sub Account. Identifier Name. Text Abbreviated Name. Text Main Accounts Chart. Identifier Main Accounts Chart Reference. Identifier Accounting Year Closing. Date Time		Booked_ Accounting Account. Derived. Linked_ Report Booked_ Accounting Account. Fiscal. AAA Entry_ Capital Asset Booked_ Accounting Account. Economic. AAA Entry_ Capital Asset Booked_ Accounting Account. IFRS. AAA Entry_ Capital Asset
AAA Entry_ Capital Asset. Details	Capital Asset. Details	Acquisition. Date Time Value Split. Numeric		AAA Entry_ Capital Asset. Specified. AAA Entry_ Capital Asset Amortization
AAA Entry_ Capital Asset Amortization. Details	Capital Asset Amortization. Details	Lifetime Duration. Measure Basis. Amount Method. Code Method Legal Reference. Identifier Method Legal Reference. Identifier Calculation Parameter. Amount Calculation Parameter. Numeric Calculation Parameter. Percent		AAA Entry_ Capital Asset Amortization. Specified. AAA_ Period

ABIE Business Term	Aggregate Core Component dictionary Entry Name	Inclusions (BBIEs to be included)	Exclusions (BBIEs to be excluded)	ASBIE
		Residual Value. Amount Lifetime End Cost. Amount Lifetime End Cost Type. Code Basis Reduction. Amount Basis Reduction. Percent Maintenance Cost. Amount Lifetime Production Capacity. Quantity Period Production. Quantity		
Fiscal_Tax. Details	Tax. Details	Identification. Identifier Calculated. Amount Type. Code Exemption Reason. Text Calculated. Rate Calculation Sequence. Numeric Basis. Quantity Basis. Amount Category. Code Currency. Code Jurisdiction. Text Customs Duty. Indicator Exemption Reason. Code Tax Basis Allowance. Rate		
Linked_Report	Report. Details	Required Item List. Identifier Name. Text Item. Identifier		

5.3 Association Business Information Entities

This section identifies any all the ASBIEs where multiplicity restrictions will be applied.

ASBIE name	Multiplicity restriction	Additional comments
AAA Entry_ Day Book. Included. Originator_ Accounting Voucher	0..*	A number of entries in a day book.
Originator_ Accounting Voucher. Related. Evidence_ Document	0..*	Contains from zero to many documents.
Evidence_ Document. Justified. Posted_ Accounting Entry	1..*	Upstream to Accounting Entry. Details; a document induces from one up to many accounting entries.
Posted_ Accounting Entry. Detailed. Posted_ Accounting Entry Line	1..*	One accounting entry contains at least two entry lines to balance a debit amount booked with a credit amount.
Posted_ Accounting Entry Line. Specified. Reference_ Accounting Line Index	0..1	Each accounting entry line refers to an index after being processed by an accounting information system.
Posted_ Accounting Entry Line. Related. Posted_ Accounting Line Monetary Value	1..*	Each accounting entry line contains at least one amount and may contain several ones expressed into different currencies.
Posted_ Accounting Line Monetary Value. Booking. Booked_ Accounting Account	1..*	Each accounting entry line must contain at least one account and may be booked into several accounting accounts such as cost accounting, job, budget line, etc.
Booked_ Accounting Account. Derived. Linked_ Report	0..*	One or several reports, returns, declarations, mandatory or not may derive from accounting account.
Booked_ Accounting Account. Fiscal. AAA Entry_ Capital Asset	0..1	An accounting account related to tangible or intangible asset that is used to calculate fiscal asset value after periodical amortization.
Booked_ Accounting Account. Economic. AAA Entry_ Capital Asset	0..1	An accounting account related to tangible or intangible asset that is used to calculate economic asset value after periodical amortization.
Booked_ Accounting Account. IFRS. AAA Entry_ Capital Asset	0..1	An accounting account related to tangible or intangible asset that is used to calculate IFRS asset value after periodical amortization.
AAA Entry_ Capital Asset. Specified. AAA Entry_ Capital Asset Amortization	0..*	Amortization information used to calculate the value of periodical amortization.
AAA Entry_ Capital Asset Amortization. Specified. Delimited_ Period	0..1	The period for calculation of periodical amortization value.
Posted_ Accounting Entry Line. Repeated. Portioned_ Monetary Allocation	0..*	Monetary allocation repetition.

ASBIE name	Multiplicity restriction	Additional comments
Portioned_ Monetary Allocation. Related. Delimited_ Period	1..1	Period limitation for monetary allocation.
Posted_ Accounting Entry Line. Repeated. Portioned_ Monetary Instalment	0..*	Monetary instalment repetition.
Posted_ Accounting Entry Line. Related. Fiscal_ Tax	0..*	Tax linked with this accounting entry line.
Fiscal_ Tax. Specified. Booked_ Accounting Account	1..*	Accounting account in use for booking tax.

5.4 Qualified data type

The qualified data type codes lists used in the message “Accounting Entry” may be either restricted enumeration from UN-EDIFACT/UNCL maintained by UN-CEFACT, or from ISO official lists of codes, or are lists maintained by EDIFICAS EU when the code list was created for typical accounting purpose.

In the current RSM document the terms “D08B” and “D10B” used as part of EDIFICAS EU codes lists name belongs to the standard UN-CEFACT versioning codification scheme. Qualified data types used in this message can be downloaded from <http://www.edificas.eu/index.php/eng/Download/Code-lists>.

5.5 Associated documentation

5.5.1 Core components UN/CEFACT Registry version used

The Core components UN/CEFACT Registry version used for this document is version 1.0 and Core Components Library version 10A, together with the TBG17 Core component library submission for the ABIEs, BBIEs and ASBIEs of the Accounting Entry approved by TBG17.

5.5.2 Root Level Message Assembly

The root element of the Accounting Entry Message is the only one
The Accounting Message Assembly template is attached here.



CCMA_Accounting_En
try_V4.1.xls