

BELARUS INLAND WATER TRANSPORT CORRIDOR **E-40**

Hong Kong, 9 May 2017

POLAND - BELARUS - UKRAINE : E-40 WATERWAY



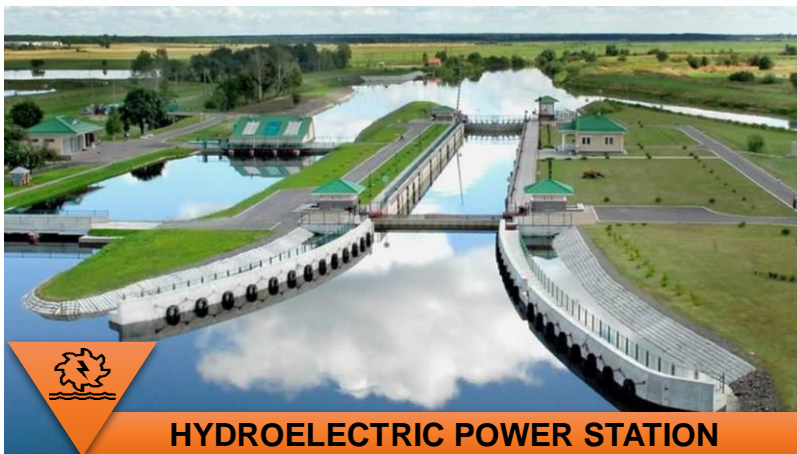
INLAND WATER TRANSPORT INFRASTRUCTURE

Navigable Waterways – 1709 km

10 Inland Ports; 11 Locks

906 Vessels, Capacity 120 000 tons

Cargo volume: 15 million tons



HYDROELECTRIC POWER STATION



BELARUS INLAND WATER TRANSPORT CORRIDOR **E-40**

Hong Kong, 9 May 2017