

The background features the official seal of the Ministry of Transport of the Russian Federation. It is a circular emblem with a blue and red border. Inside, there is a golden double-headed eagle with a crown on top. The eagle's wings are spread, and it holds a shield on its chest. The shield contains a blue and white design. The text 'МИНИСТЕРСТВО ТРАНСПОРТА РОССИЙСКОЙ ФЕДЕРАЦИИ' is written in a circular path around the eagle. At the bottom of the seal, the word 'лет' is written in a stylized font, and the number '200' is visible above it, indicating a 200th anniversary.

Alexey Klyavin

**Director of the Department
of State Policy for Maritime
and River Transport**

**Ministry of Transport of the
Russian Federation**

Main indicators of inland waterway transport



Length of Inland Waterways is	101,5 thousand
km	
Navigable Hydrotechnical Facilities	723 units
Number of River ports	131
River port of international importance	15

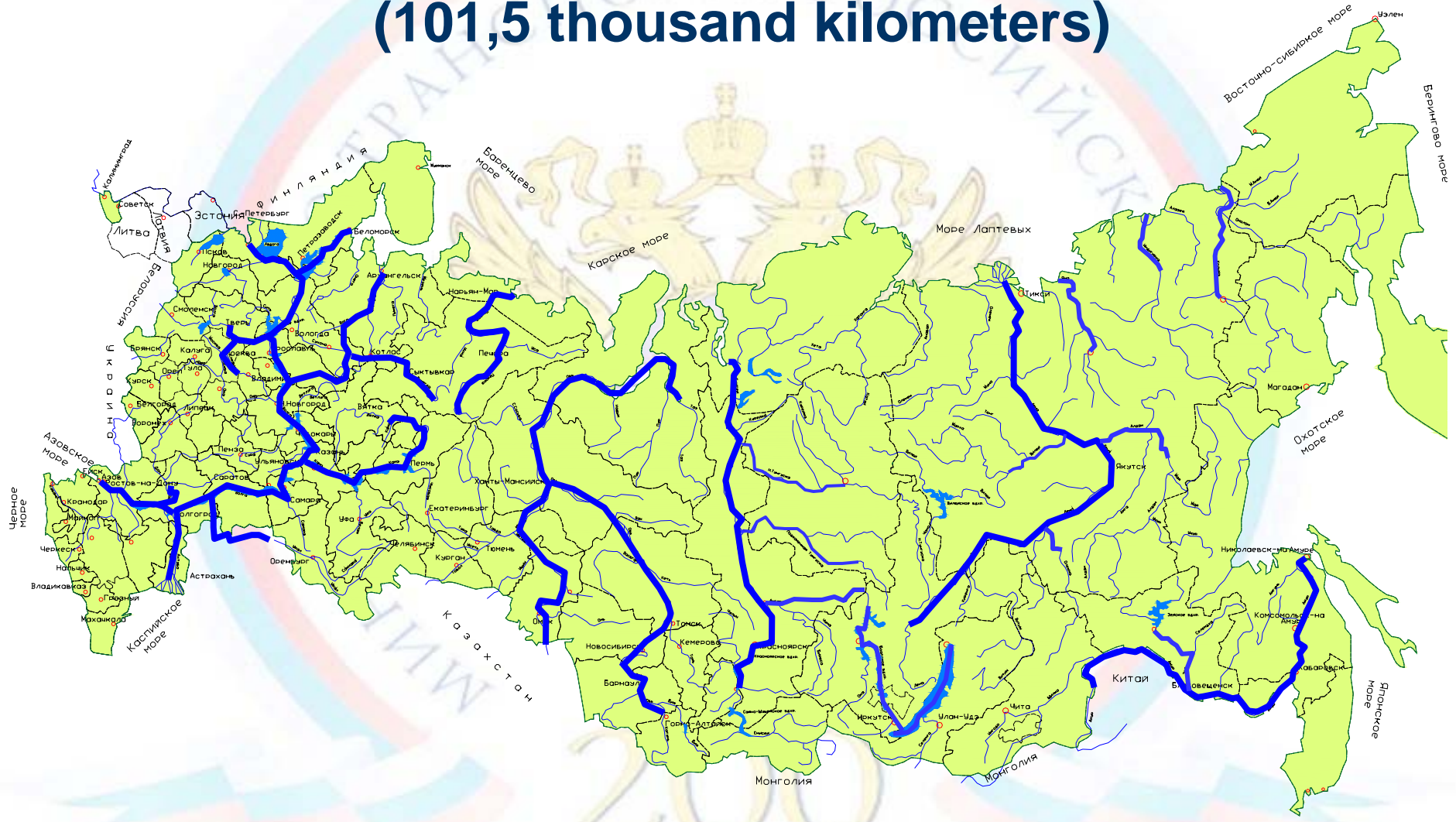
Number of companies transporting	
goods and passengers by inland	
waterways	1500
Number of vessels	30000

Turnover:

- 150 million tons of different types of cargo (including 25 million tons hinterland of the country in the Far North);**
- 20 million of passengers;**
- 225 million tons of cargo handled in river ports.**

Inland waterways of Russia

(101,5 thousand kilometers)



List of inland waterways of international importance

Number of E Waterway		DESCRIPTION OF THE ROUTE
Main waterway	Branches	
1	2	3
E 50		St. Petersburg, via Volgo-Baltijskiy Waterway to Vytegra-Rybinsk-river Volga from Rybinsk via Nizhnij Novgorod, Kazan and Volgograd to Astrakhan
	E 50-02	Rybinsk-Moskva
	E 50-02-02	River Volga from Dubna to Tver
	E 50-01	River Kama from its mouth to Solikamsk

rem

EUROPEAN WATER TRANSPORT RING



Transport strategy of the Russian Federation up to 2030

Main objectives of the Russian transport system:

Objective 1. To organize an integrated transport space of Russia on the basis of sustainable development of efficient transport infrastructure.

Objective 2. To ensure availability, necessary scope and competitiveness of transport services on the quality criteria for cargo at the needs of innovative development of the economy.

Objective 3. To ensure availability and quality of transport services to the public in accordance with social standards.

Objective 4. To integrate into the international space transportation and fulfilment of transit potential of the country.

Objective 5. To improve security of the transport system.

Objective 6. To reduce environmental impact of transport .

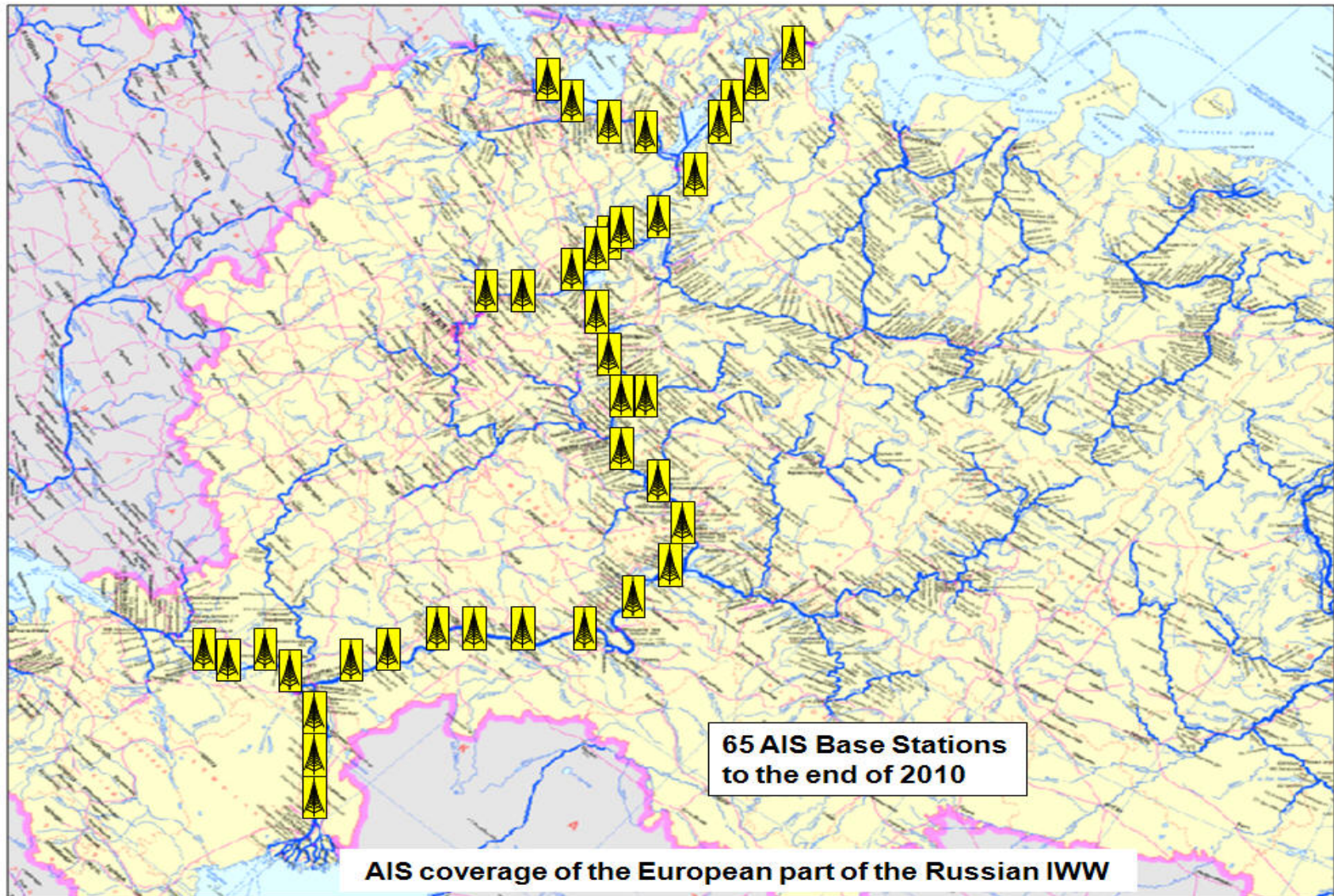
Bottlenecks



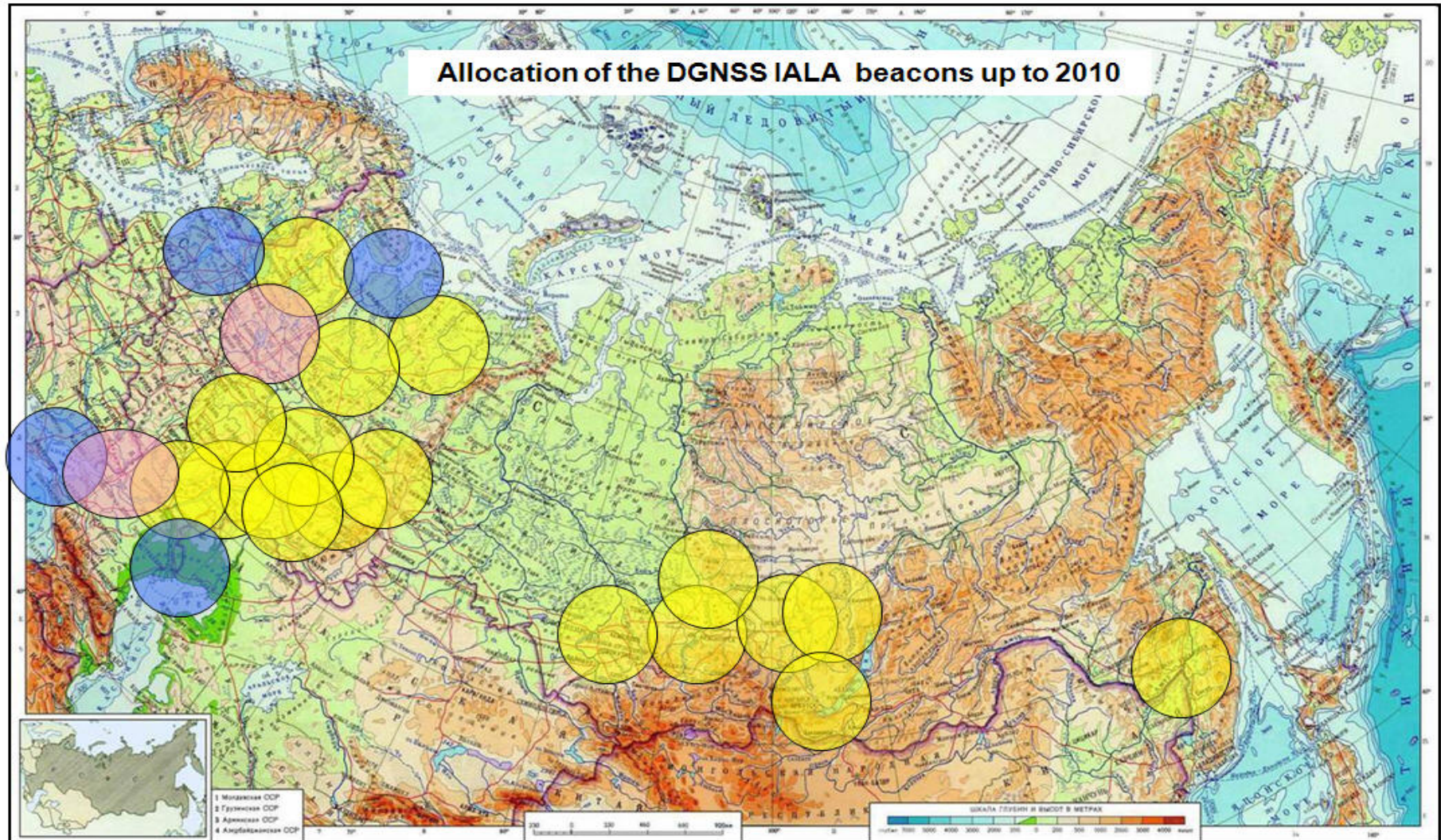
Kochetovsky HYDROUNIT (2nd LINE of the LOCK)



AIS coverage of European part of Russia IWW

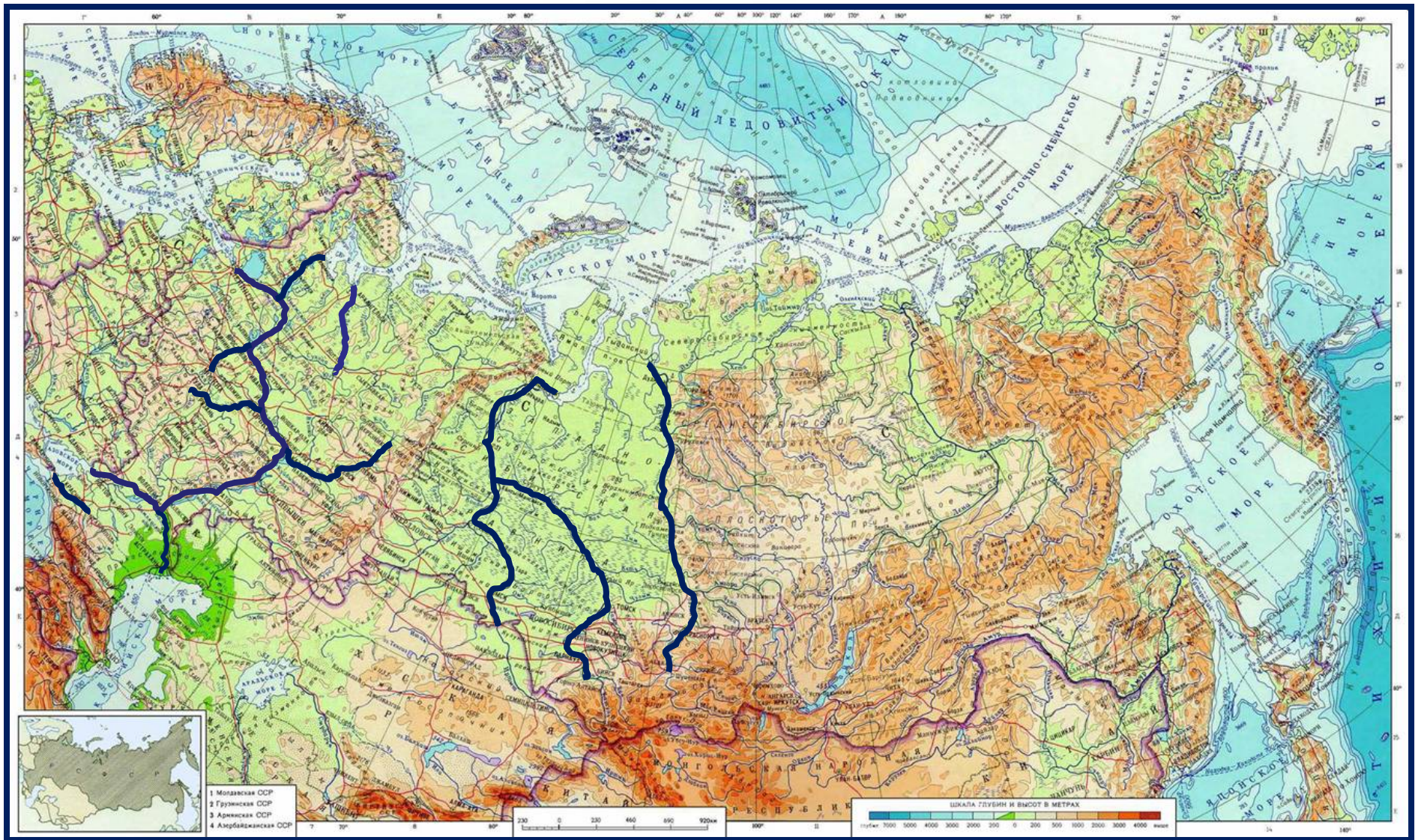


IALA beacons on inland waterways and coastal areas



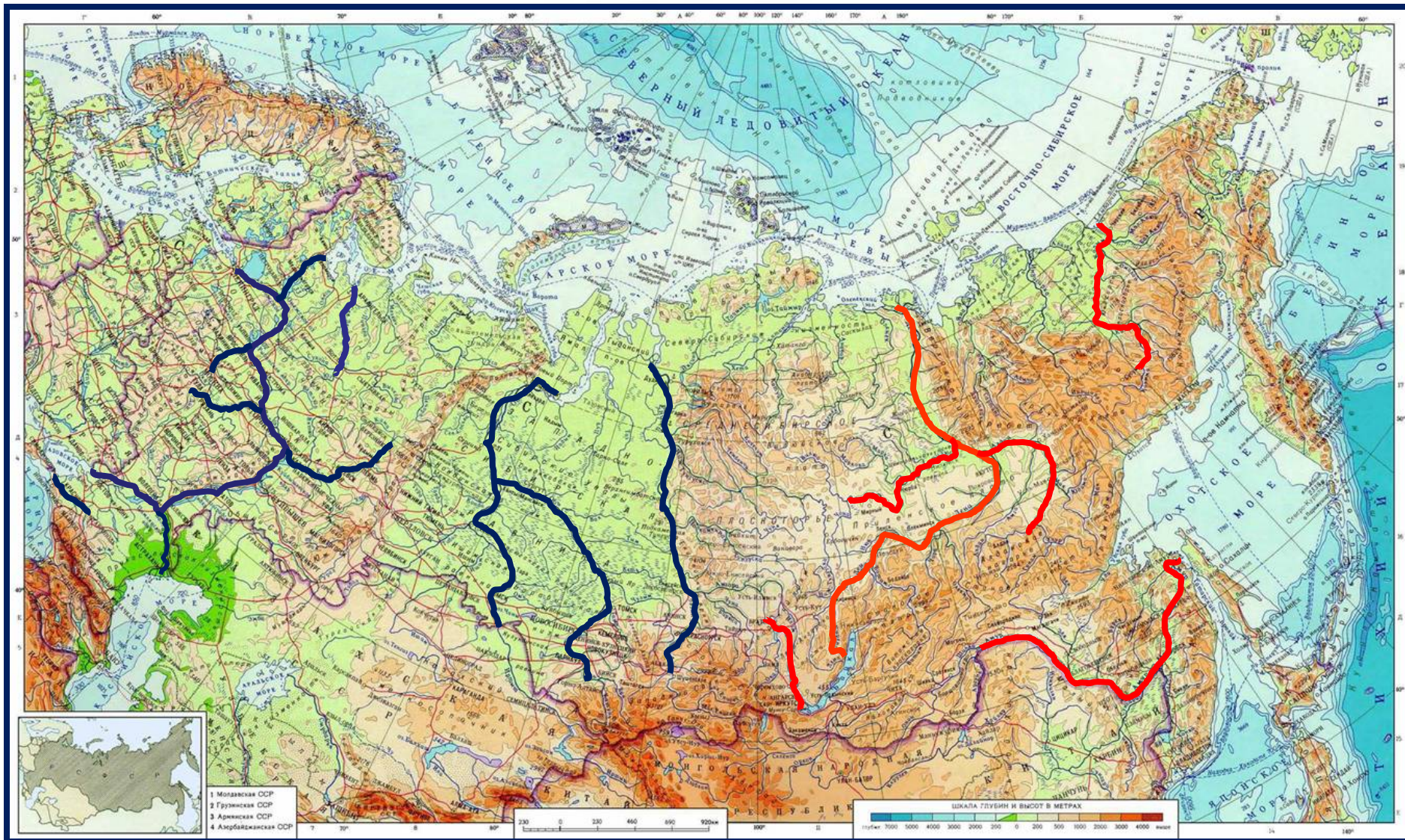
- Maritime DGNSS beacons in service
- Inland waterways DGNSS beacons in service

- Inland waterways DGNSS beacons under construction



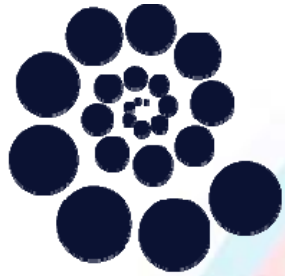
11900 km - ENC coverage to the end of 2009

лет



21800 km - ENC coverage to the end of 2010 (planned)

лет



MoPe

MoPe = Sea+River

Consolidation of national, regional and other existing information systems to ensure prompt access to all available types of information from the state organizations and agencies, creation of analytical and statistical data base in the field of maritime and river transport.

лет

Objectives:

- ❑ to provide operational and integrated information on Russian maritime and river transport for interested state organizations;
- ❑ to ensure the participation of Russia in the maintenance of existing and creation of new international and regional systems of control of navigation;
- ❑ to provide a complex information control by processing data obtained from different sources;
- ❑ to create a support safety of navigation system;
- ❑ to coordinate of the interaction of technical operation, safety of navigation systems and administrative and supervisory bodies;
- ❑ to provide precise data and timely information about the functional elements (composition and arrangement of the fleet flying under Russian flag, shipowners and their fleets, port capacity, duty forces and means of rescue, statistics, etc.)
- ❑ to ensure integration with automated control system complex transport of the Ministry of Transport of the Russian Federation.

Rusich type dry cargo vessel



Main dimensions	Unit	Value
Overall length	m	128,2
Overall width	m	16,74
Overall height in ballast	m	16,5
Endurance	day	20
Speed of the vessel when fully loaded	knots	11
Carrying capacity in the river/sea	t.	3720/4925
DWT in the river / sea	t.	3070/5190
Crew		10+2add.

Thank you for your
Attention!

