



62nd Session of GRSP

ECE R129 Phase 3
Pierre CASTAING - UTAC CERAM

●●● Summary

- ⇒ History of Regulation ECE R129
- ⇒ Phase 1 => Principles & Achievements
- ⇒ Phase 2 => Principles & Achievements
- ⇒ Phase 3 => Principles
- ⇒ Phase 3 => Challenges
- ⇒ Phase 3 => Achievement at date
- ⇒ Next steps

History of Regulation ECE R129

Series	Supplement	09/07/2013	26/01/2014	10/06/2014	09/10/2014	08/10/2015	09/02/2017	22/06/2017	[30/01/2018]	[30/06/2018]	01/09/2018	[30/01/2019]	01/09/2020	01/09/2022
00+ cor 1	-													
Integral ISOFIX	01													
i-Size or Specific	02													
	03													
	04													
	05													
	[06]													
	[07]													
01	-													
Integral ISOFIX	01													
i-Size or Specific	[02]													
	[03]		[xx]	Inclusion of Shield ECRS in R129										
	[04]		[xx]	Latest corrections and inclusion in Series 03 of Integral belted ECRS										
02	-													
Non-Integral Booster seat	[01]													
i-Size or Specific	[02]													
	[03]													
	[03]													
Integral belted	-													
Universal or Specific														

●●● GRSP 62nd Session R129 documents

✈ Original version

- ✈ [ECE/TRANS/WP.29/GRSP/2017/31](#) (Supplement 7 to R129-00)
- ✈ [ECE/TRANS/WP.29/GRSP/2017/34](#) (Supplement 7 to R129-00)
- ✈ [ECE/TRANS/WP.29/GRSP/2017/44](#) (Supplement 7 to R129-00)

✈ 01 Series

- ✈ [ECE/TRANS/WP.29/GRSP/2017/27](#) (Supplement 4 to R129-01)
- ✈ [ECE/TRANS/WP.29/GRSP/2017/32](#) (Supplement 4 to R129-01)
- ✈ [ECE/TRANS/WP.29/GRSP/2017/35](#) (Supplement 4 to R129-01)
- ✈ [ECE/TRANS/WP.29/GRSP/2017/43](#) (Supplement 4 to R129-01)
- ✈ [GRSP-62-22](#) (Supplement 5 to R129-01)

✈ 02 Series

- ✈ [ECE/TRANS/WP.29/GRSP/2017/27](#) (Supplement 3 to R129-02)
- ✈ [ECE/TRANS/WP.29/GRSP/2017/29](#) (Supplement 3 to R129-02)
- ✈ [ECE/TRANS/WP.29/GRSP/2017/30](#) (Supplement 3 to R129-02)
- ✈ [ECE/TRANS/WP.29/GRSP/2017/36](#) (Supplement 3 to R129-02)
- ✈ [ECE/TRANS/WP.29/GRSP/2017/42](#) (Supplement 3 to R129-02)
- ✈ [GRSP-62-21](#) (Supplement 4 to R129-02)

✈ 03 Series

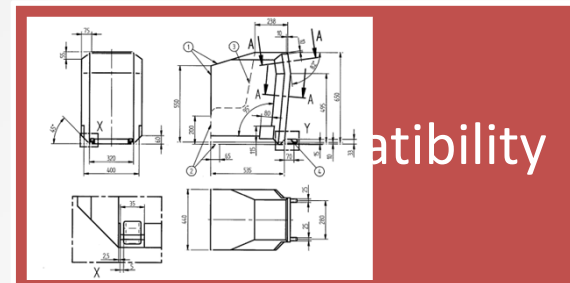
- ✈ [ECE/TRANS/WP.29/GRSP/2017/41](#) (03 series of amendments (Phase 3) to R129)
- ✈ [ECE/TRANS/WP.29/GRSP/2017/27](#) *to be included also in 03 Series if agreed*
- ✈ [ECE/TRANS/WP.29/GRSP/2017/30](#) *to be included also in 03 Series if agreed*
- ✈ [ECE/TRANS/WP.29/GRSP/2017/36](#) *to be included also in 03 Series if agreed*
- ✈ [GRSP-62-20](#) (Supplement 1 to R129-03)

Phase 1 => Principles & Achievements

Phase 1

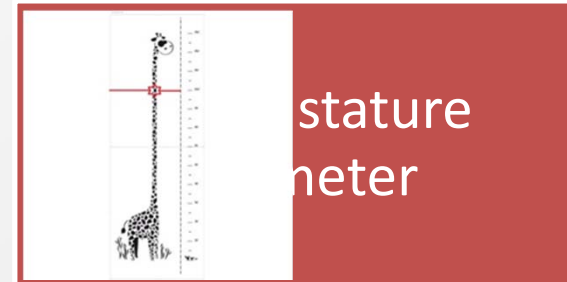
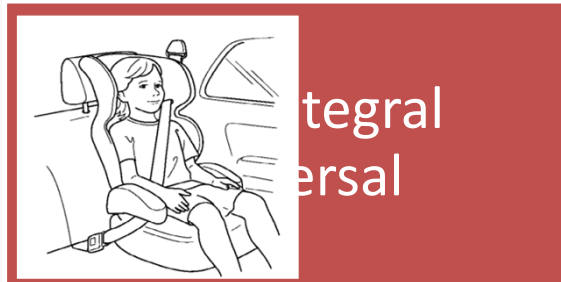


i-Size

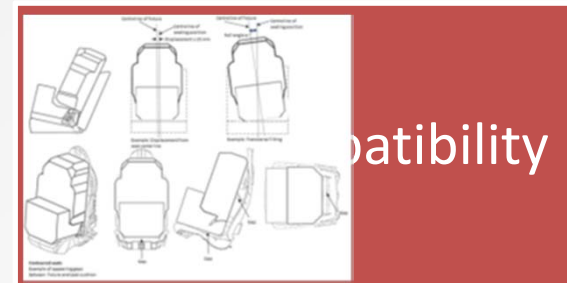


Phase 2 => Principles & Achievements

Phase 2

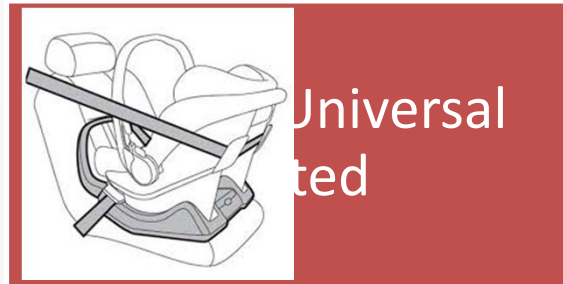


i-Size
Booster
Seat

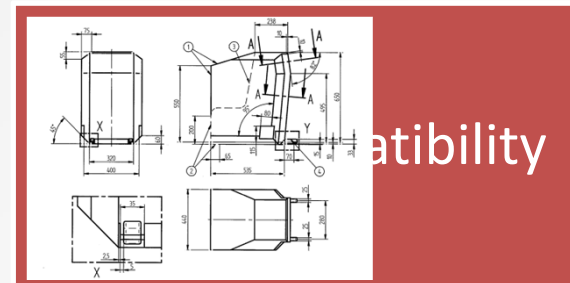


●●● Phase 3 => Principles

Phase 3



Universal
Belted



●●● Phase 3 => Challenges

- ✈ **Do we want to authorize combination of ECRS types ?:**
 1. ISOFIX (including I-Size) & Universal Belted
 2. Universal (i- Size Integral ISOFIX, i-Size Booster Seat, Universal Belted) & Specific to vehicle
 3. Integral & Non-Integral
 4. Rearward & Forward

- ✈ **Do we want to authorize the sales of ECRS “not ready for use” ?:**
 5. Not permanently fixed
 - support leg
 - top tether
 - Shield
 - Backrest
 - Anti-rebound bar
 - ...

- ✈ **Do we want to authorize the use of “add-on” fixing points other than ?:**
 6. ISOFIX anchorages with support leg or top tether for I-Size & ISOFIX products
 7. Adult 3 points belt for Universal belted ECRS

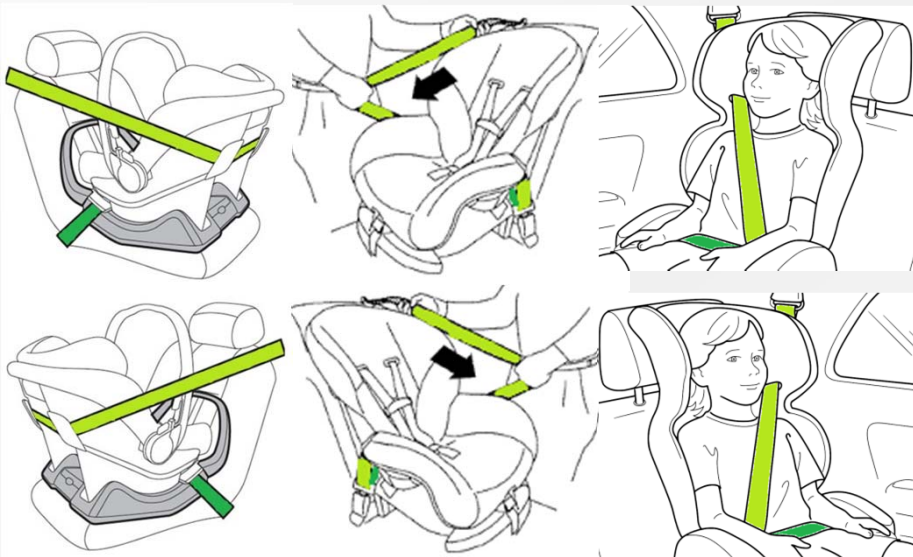
- ✈ **Guiding principles**
 - ✈ Avoid misuse
 - ✈ Avoid confusion for the parents
 - ✈ Plug & Play system

●●● Phase 3 => achievement at date

1. **ISOFIX (including I-Size) & Universal Belted (integral)**
 - Only for Modular Integral ECRS if only one belt route on the module to be used as a stand alone product.
2. **Universal (i- Size Integral ISOFIX, i-Size Booster Seat, Universal Belted) & Specific to vehicle**
 - Only for extension of size range, beyond I-Size size range
3. **Integral & Non-Integral**
 - Only if there is a reversibility of the transformation (the integral restraint system of the child must stay on the ECRS)
4. **Rearward & Forward**
 - ISOFIX or Belted base associated with modules or rotating chair and for belted ECRS only one adult belt route by ECRS
5. **Not permanently fixed**
 - Support leg, Top tether, Backrest & Anti-rebound bar must be assembled when put to the market
 - Shield must be labelled
6. **“add-on” fixing points to ISOFIX anchorages system**
 - No possibility to use ISOFIX anchorage system and Adult safety belt simultaneously for Integral ECRS
 - The product must be type approved in the worst case condition (W/O “add-on”)
7. **“add-on” fixing points to adult 3 points belt for Universal belted ECRS**
 - Low tether anchorage are not yet defined

●●● One belt route

- What is plug and play for belted integral ECRS ?
- Try to find a common way to fix the ECRS on the vehicle by the adult safety belt
- Identify clearly the webbing paths for lap belt and diagonal belt



Icons for use on/near belt guide



A

B

Icons for use on installation label



or



C

●●● Next steps

- ⇒ Endorsement of Phase 3 by GRSP at its 62nd Session.
[ECE/TRANS/WP.29/GRSP/2017/41](https://www.unece.org/transport/GRSP/2017/41)
- ⇒ Found a new chairman for the IWG ECRS if needed.
- ⇒ Upgrade the current text to suppress any ambiguity for Type Approval Authorities and Technical Services.
- ⇒ Include provisions for Lower Tether Anchorage (LTA) based on ISO work (**GRSP-62-20**, GRSP-62-21 & GRSP-62-22)
- ⇒ Include provisions for booster cushions still in Regulation R44
- ⇒ Repeal the Regulation R44

●●● Next steps

⇒ Continue to study the possible authorised multi-configurations:

⇒ “One fit all” is perhaps not the best solution





Thank you for your attention

Pierre CASTAING

pierre.castaing.externe@utacceram.com