



BELARUS INLAND WATER TRANSPORT AND INTERNATIONAL WATERWAY E 40

Geneva, 3-th October 2017

Aleksey Afanassiev,
Head of Water Transport Research Department
Belarusian Institute of Transport "TRANSTEKHNKA"



INLAND WATER TRANSPORT INFRASTRUCTURE

Belarus IWT Characteristics:

Navigable Inland Waterways – 1709 km

Inland Ports – 10

National IWT Vessels – 906

Carrying Capacity of an IWT Freight Vessels – 120 000 ton

Navigable Locks - 11





National Codes

- Inland Water Transport Code of the Republic of Belarus
- Maritime Code of the Republic of Belarus
- Other National Legislation
- Other National Legislation

Ratified International Legislation

- European Agreement on Main Inland Waterways of International Importance (AGN), of 19 January 1996
- IMO Convention 48
- SOLAS Convention 74
- SOLAS Protocol 88
- Convention relating to the Unification of Certain Rules concerning Collisions in Inland Navigation, of 15 March 1960
- LOAD LINES Convention 66
- LOAD LINES Protocol 88
- COLREG Convention 72
- CSC Convention 72
- STCW Convention 78
- IMSO Convention 76
- INMARSAT OA 76
- FACILITATION Convention 65
- MARPOL 73/78 (Annex I/II)
- MARPOL 73/78 (Annex III)
- MARPOL 73/78 (Annex IV)
- MARPOL 73/78 (Annex V)
- London Convention 72
- SUA Convention 88
- SUA Protocol 88
- Convention on the Registration of Inland Navigation Vessels, of 25 January 1965
- Convention on the Measurement of Inland Navigation Vessels, of 15 February 1966

State Programs

- Belarus Transport Innovation Strategy till 2030
- Belarus Transport Development Program for 2016-2020 (Belarus Inland Water and Maritime Transport Subprogram for 2016-2020)



NAVIGABLE LOCKS ON THE DNIEPER-BUG CANAL «DUBOY», «NOVOSADY», «TRYSHYN»

Navigable Lock «DUBOY»

Before the Reconstruction



At Present



HYDROELECTRIC POWER STATION

Navigable Lock «NOVOSADY»

Before the Reconstruction



At Present



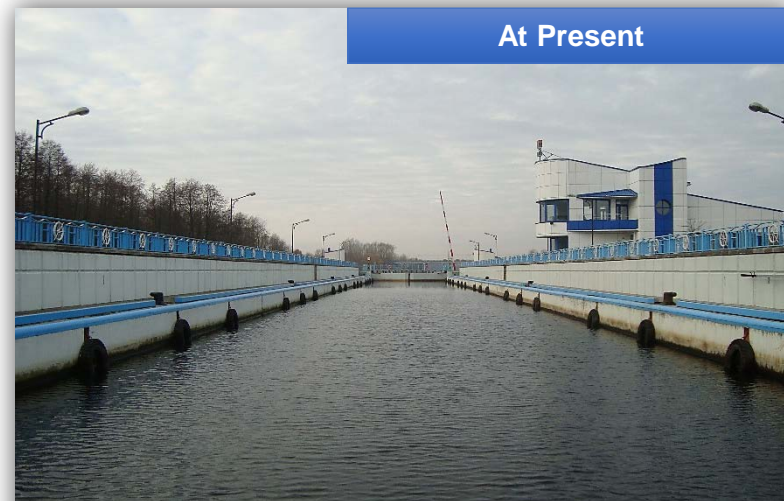
HYDROELECTRIC POWER STATION

Navigable Lock «TRYSHYN»

Before the Reconstruction



At Present

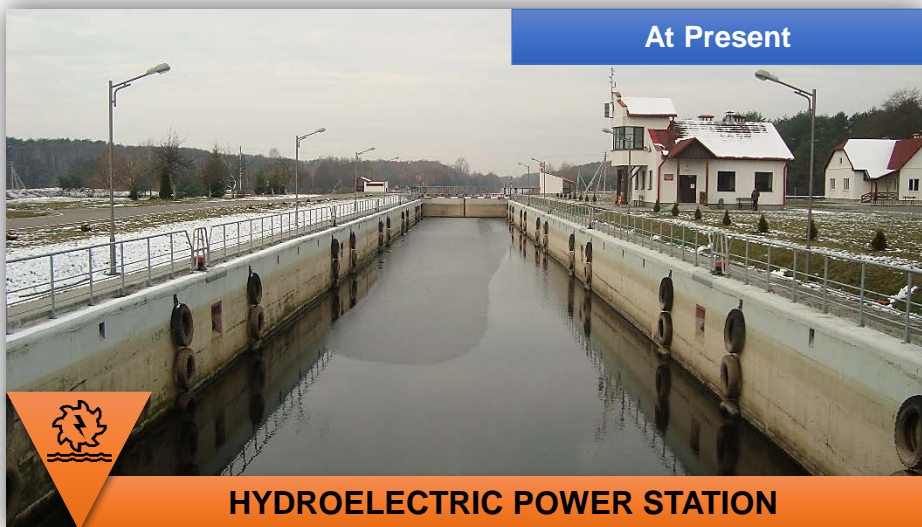


HYDROELECTRIC POWER STATION

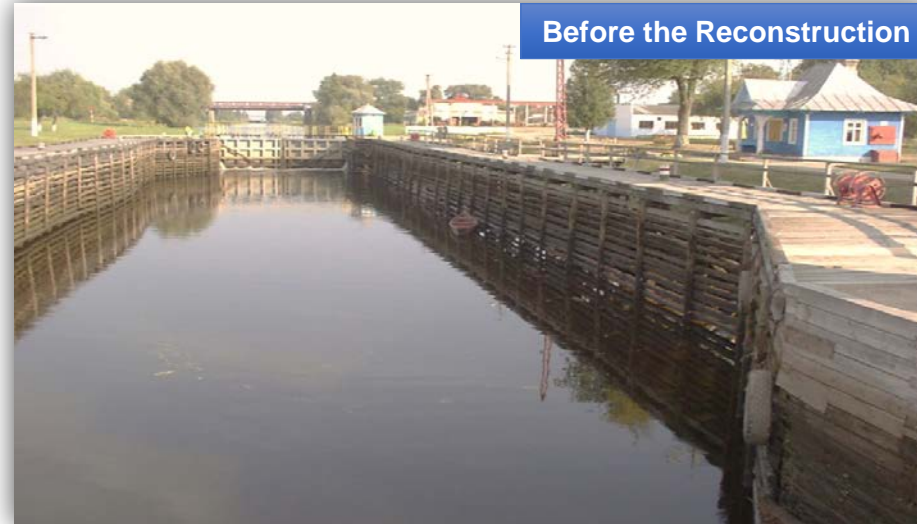


NAVIGABLE LOCKS ON THE DNIEPER-BUG CANAL «ZALUZIE» AND «KOBRYN»

Navigable Lock «ZALUZIE»



Navigable Lock «KOBRYN»



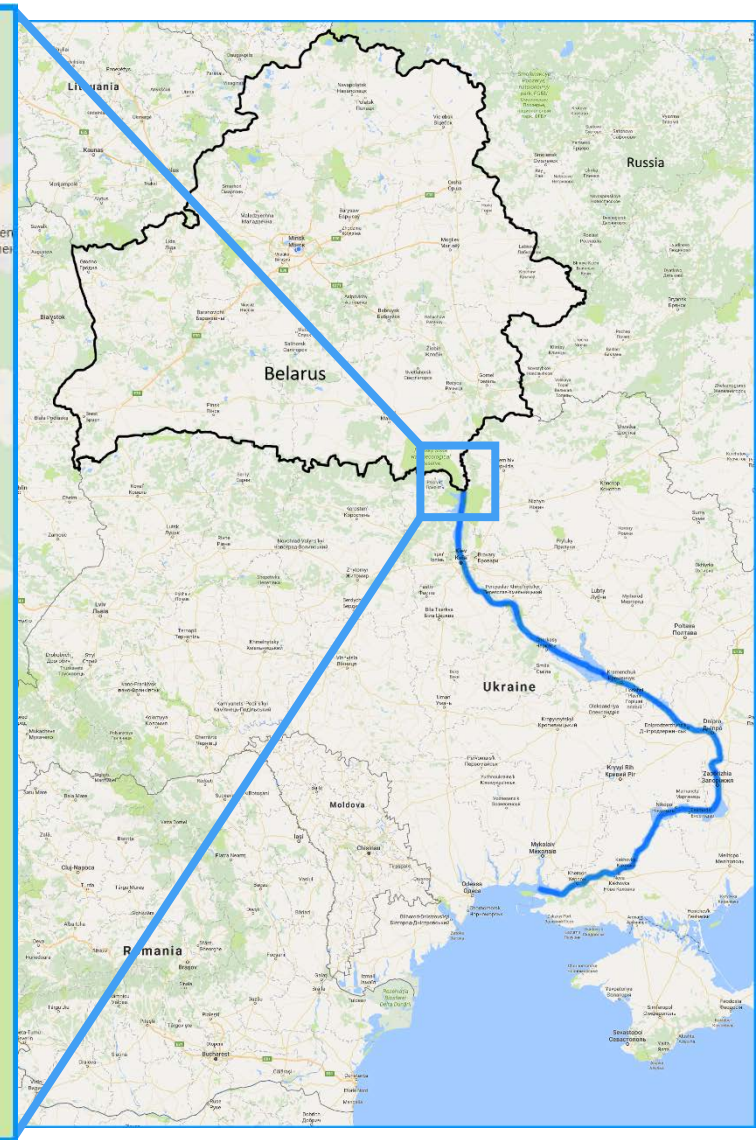
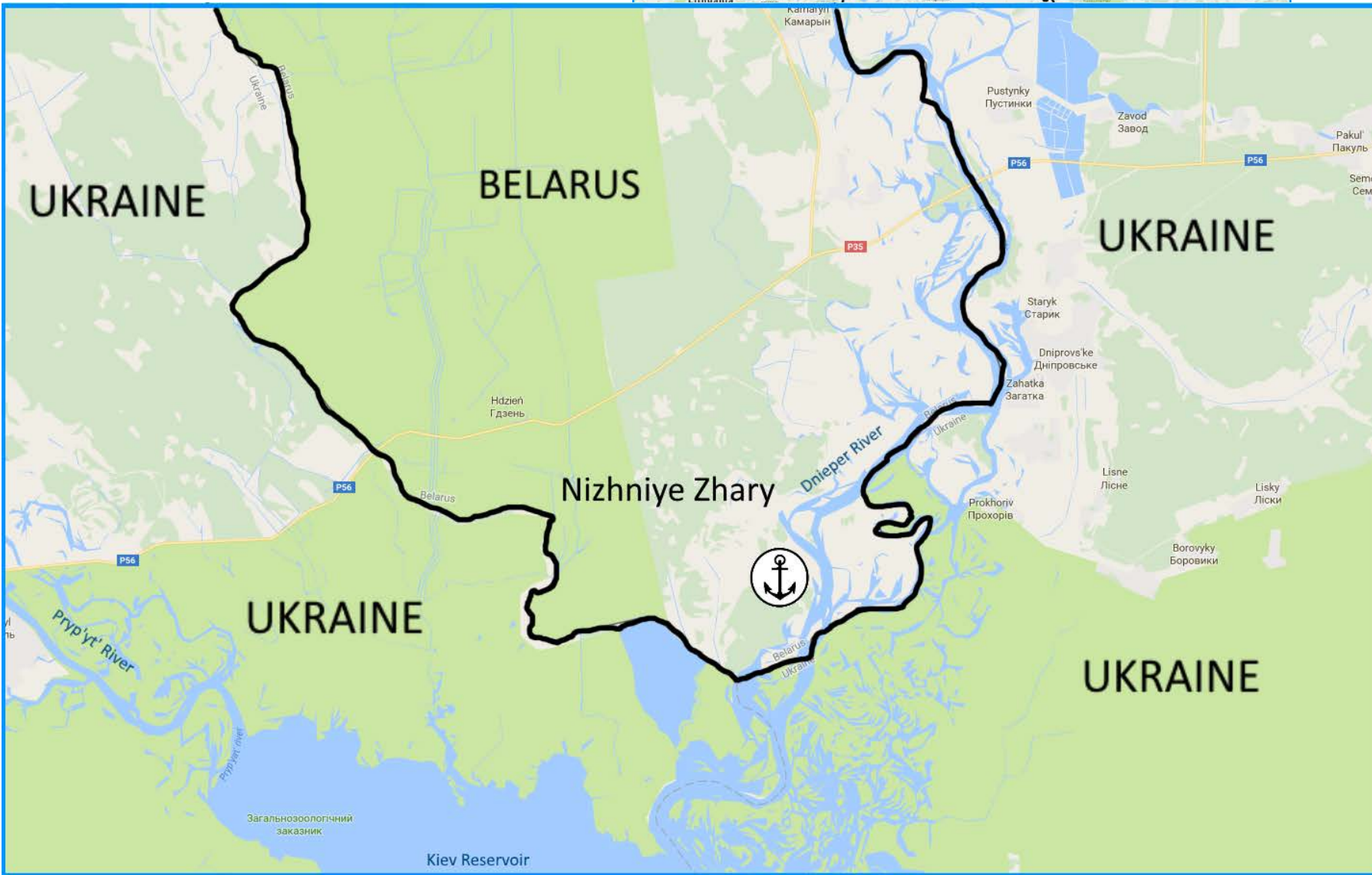


STONE GROINS ON THE PRY'PYAT' RIVER



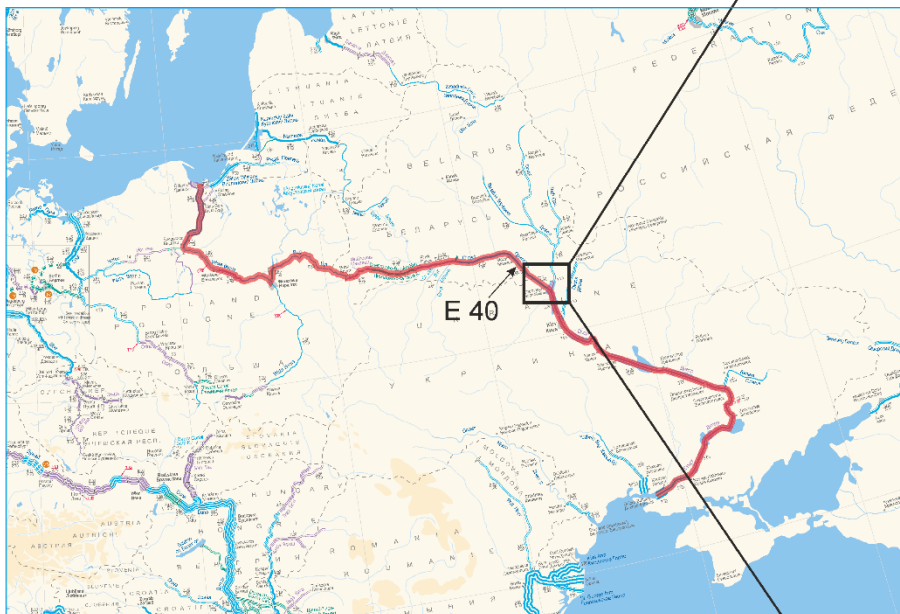


PROPOSAL «NIZHNIYE ZHARY PORT» TO PRIVATE INVESTMENTS





AMENDMENT TO THE AGN





Thank you for your attention!