



Ministry of Transport
and Communications

Institutional and policy innovations for mobility management; case Finland

Seija Miettinen-Bellevergue, Senior Adviser



Facts about Finland

Area:

- 338,000 sq.km.

Demography:

- Total population of 5.3 million,
- 62 per cent of whom live in urban areas.
- Population density 18 inhabitants/ sq.km

Capital:

- Helsinki 568,000 inhabitants,
- Metropolitan area about 1 million inhabitants

Infrastructure in Finland:

- Length of public roads 78 179 km
- Motorways 700 km
- Municipality roads 26 000 km
- Private roads 350 000 km
- Rail network 5 700 km
- Maritime and inland waterways 16 200 km
- Commercial airports 25



Content of the Presentation

- Towards Modern Transport Policy
- Restructuring of the administration has made it possible

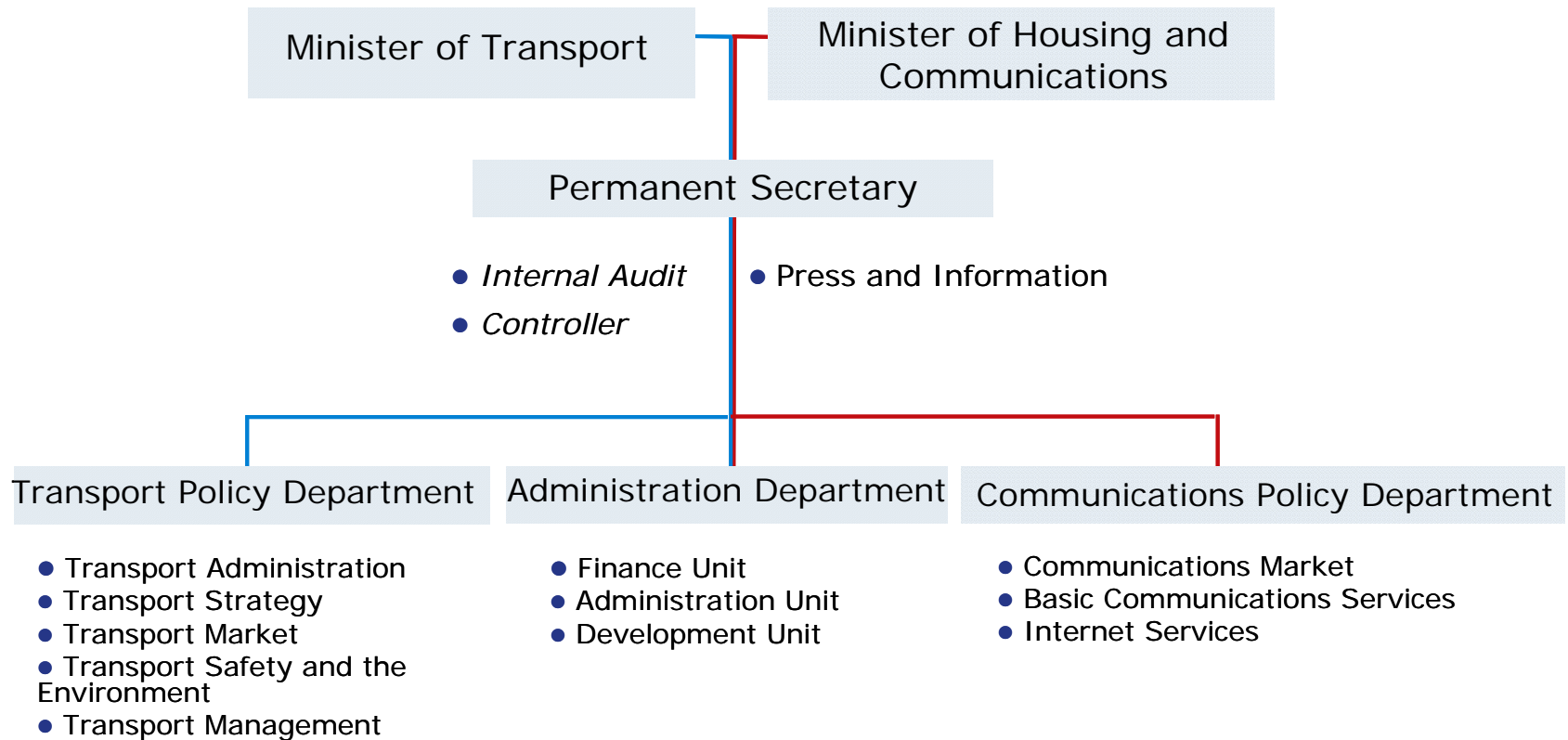
Finland's Modern Transport Policy

- Focus on the customers
- Smart and efficient use of resources
- Living lab for business and innovations
- Broad-based co-operation
- Pilot projects

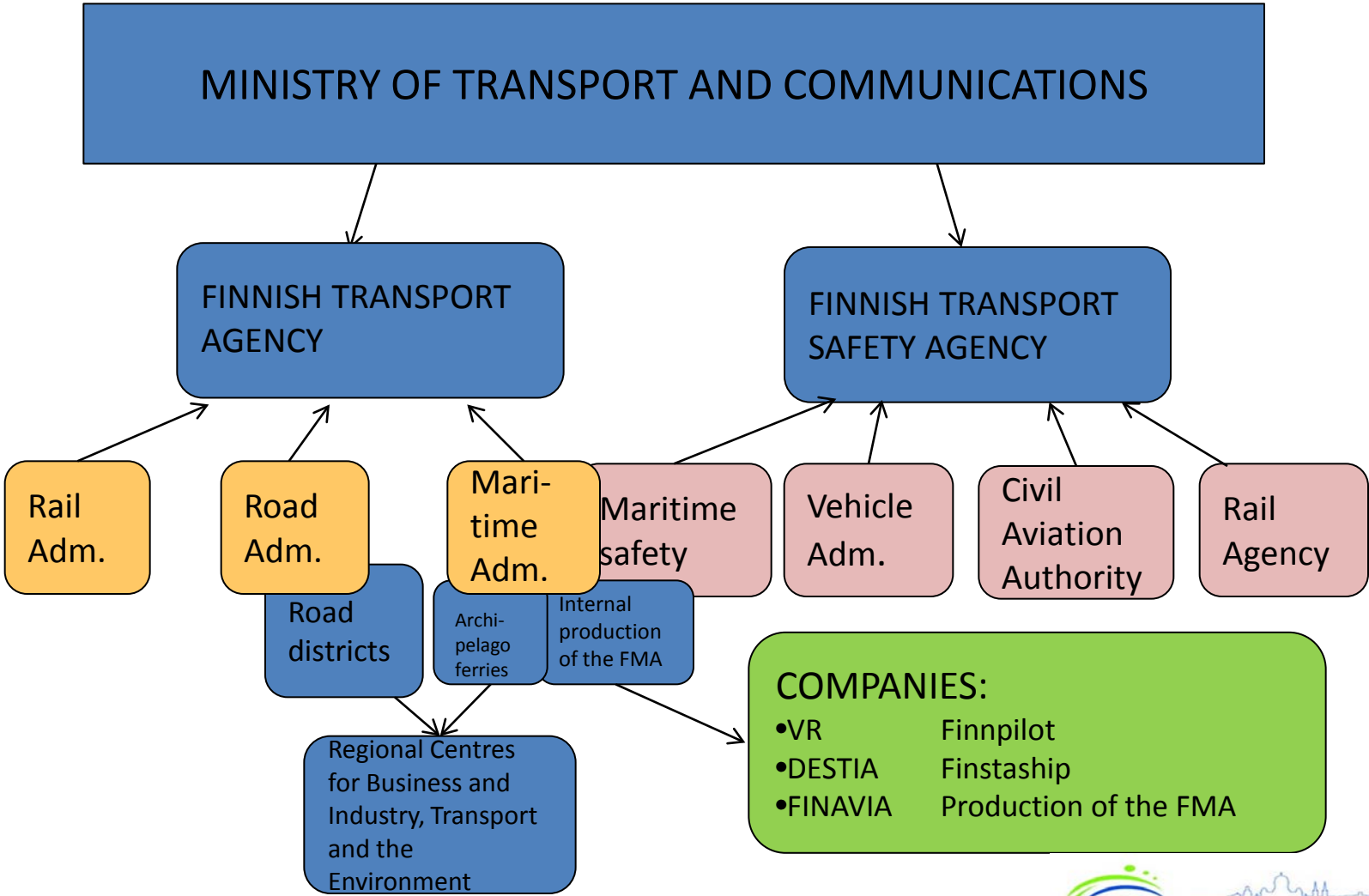
Goal

- Customer-oriented transport services for sustainable growth and well-being

Ministry of Transport and Communications



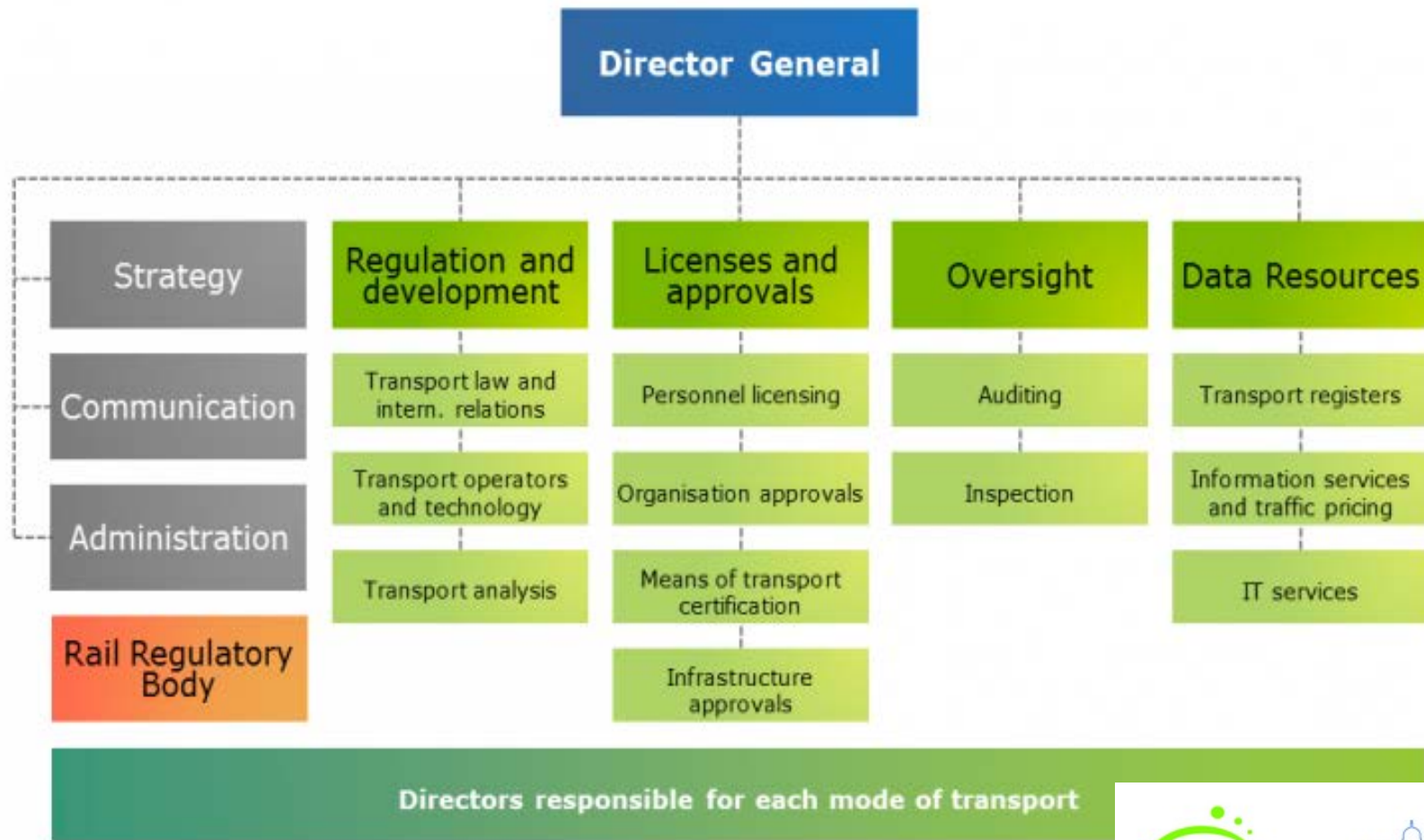
Organisational change



Finnish Transport Agency



Finnish Transport Safety Agency, Trafi





ITS in Your Pocket

Thank you for your attention!



Helsinki Exhibition & Convention Centre
ITS EUROPE 2014

- Exhibition and Catering (Hall 6a+d)
- Outdoor Demonstration Space (Northern Entrance)
- Registration (Southern Entrance)
- Opening Ceremony/Sessions (101)
- Parallel Sessions (102, 201, 203-209)
- Offices (211-214)

