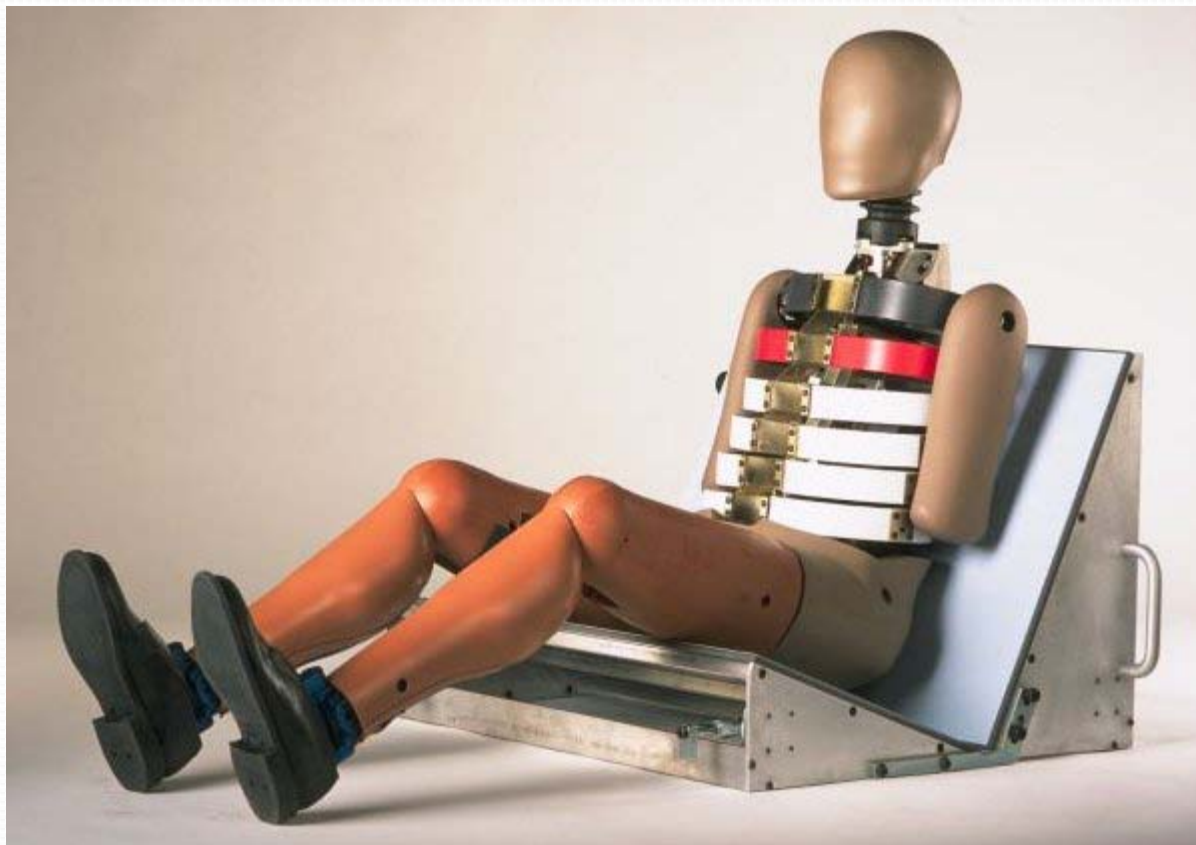


Status of NHTSA's Evaluation of WorldSID ATDs

WorldSID Informal Group

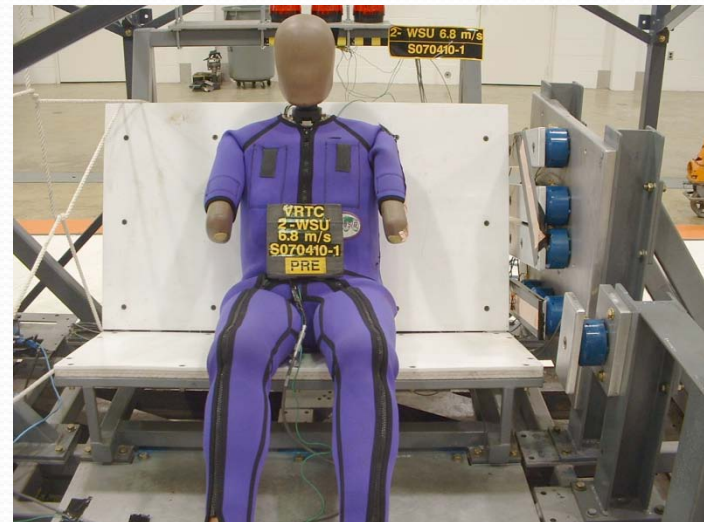
March 2, 2011

WorldSID 50th Male



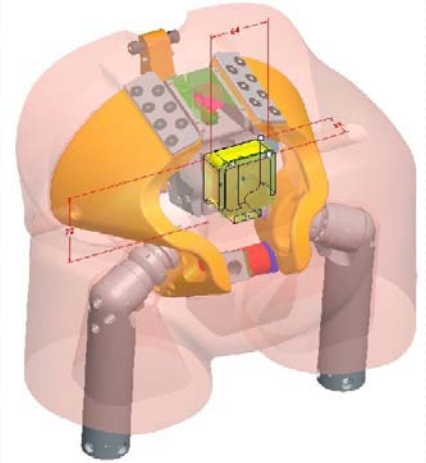
50th Male Status

- Dummy Testing Complete
 - Biofidelity
 - Certification
 - R&R
 - Durability



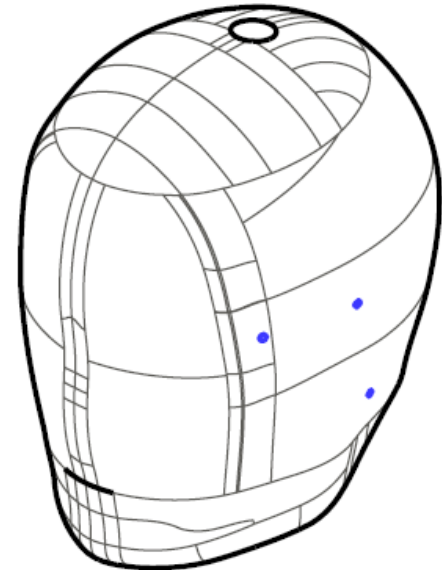
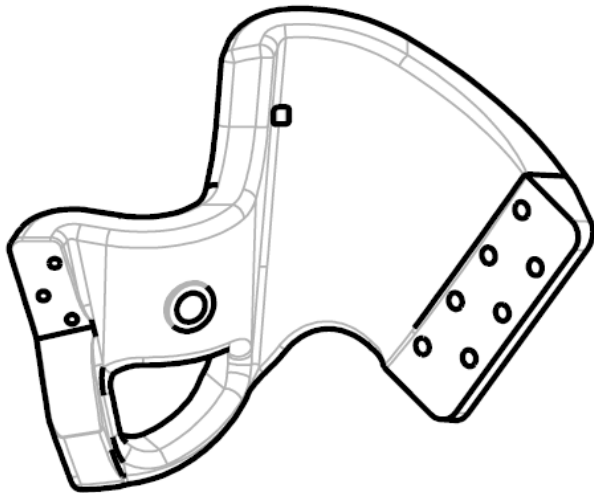
50th Male Status

- Planned Activities
 - Complete documentation necessary
 - Final Reports
 - User's Manual (PADI)
 - Drawing Package
 - Generic DAS Specification
 - Seating Procedure
 - Fleet Testing



50th Male Status

- Potential Issues?
 - Material changes to pelvis and head
 - Additional testing required?

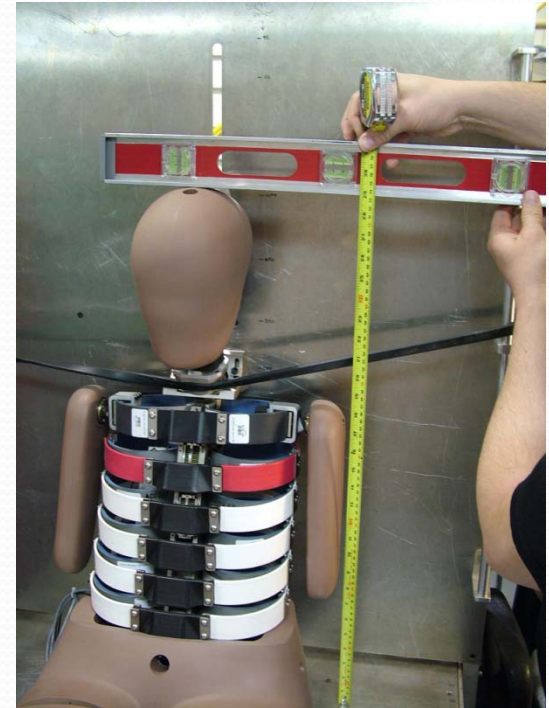


WorldSID 5th Female



5th Female Status

- Preliminary Inspection
 - Mass
 - External Dimensions
- Certification Tests
 - Head Drops, frontal and lateral
 - Neck Pendulum, lateral
 - R&R is good



Neck Pendulum Certification R&R

Dummy S/N	Peak Flexion Angle		Peak OC Moment		Peak Fwd Pot Angle		Peak Rwd Pot Angle	
	angle	decay	M_{y-oc}	decay	angle	time	angle	time
	deg	msec	Nm	msec	deg	msec	deg	msec
AC-3480	0.95%	1.32%	1.05%	1.19%	0.85%	0.74%	1.15%	1.20%
DG-0236	0.49%	2.11%	0.94%	0.51%	1.43%	2.84%	1.68%	0.99%
both	1.44%	2.11%	6.71%	3.68%	1.34%	2.12%	1.56%	1.15%

Head Drop R&R

Dummy S/N	Frontal	Lat Left	Lat Right
	peak G	peak G	peak G
AC-3480	0.84%	4.94%	1.45%
DG-0236	0.49%	0.90%	0.56%
both	4.23%	6.35%	3.43%

5th Female Status

- IR-Tracc Issues
 - Inconsistent lab-to-lab sensitivity
 - Sensitivity dependent on IR-Tracc orientation

