



**Economic and Social
Council**

Distr.
GENERAL

ExG/COMP/2005/5
20 April 2004

ENGLISH ONLY

ECONOMIC COMMISSION FOR EUROPE

INLAND TRANSPORT COMMITTEE

Working Party on Customs Questions

affecting Transport

Informal Ad hoc Expert Group on Conceptual and
Technical aspects of Computerization of the TIR Procedure
(26-27 May 2005)

Activities of the Informal ad hoc Expert Group

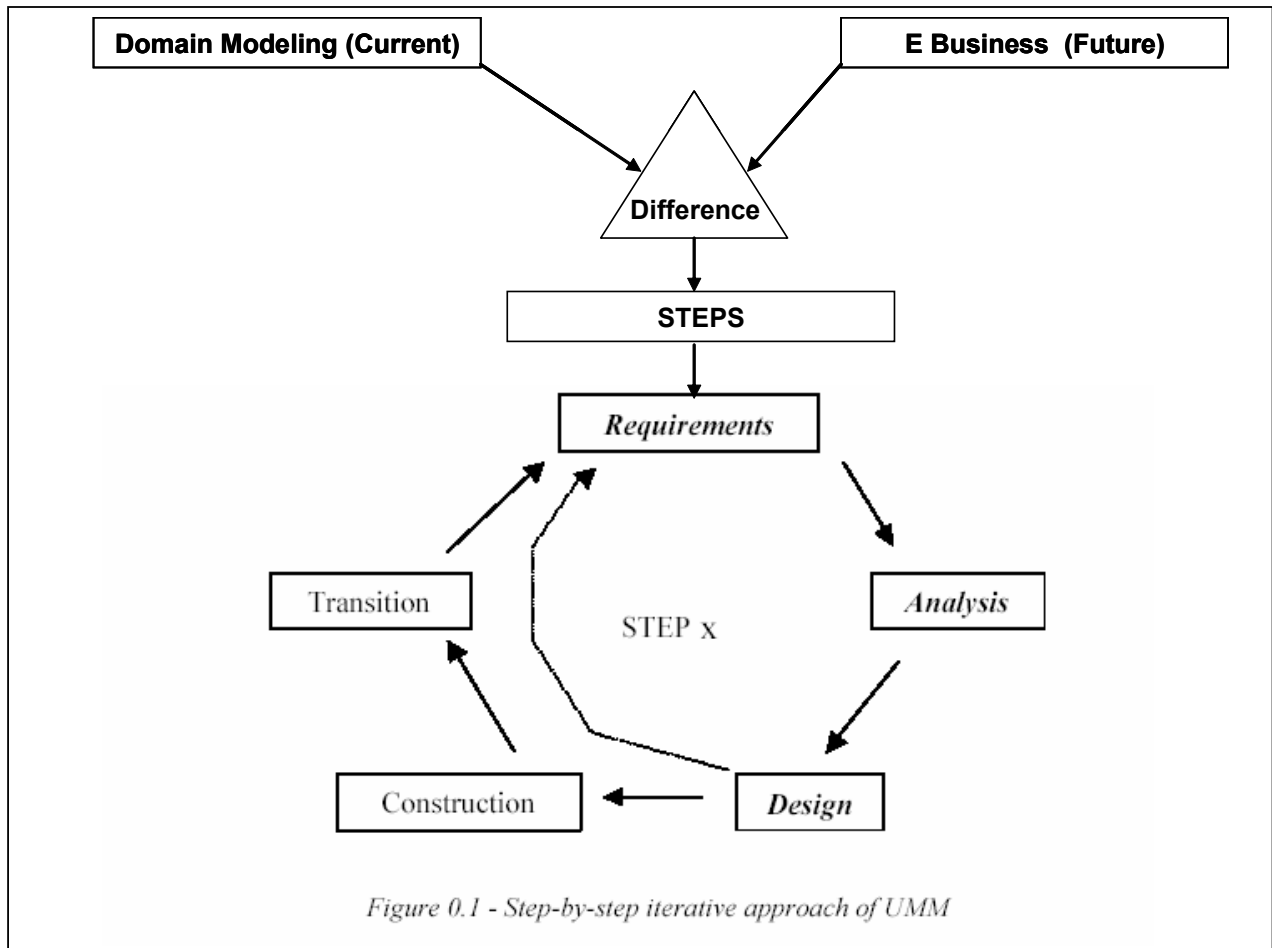
Issues 60, 61, 62 and 63

IRU and Association's comments on Version 1.4a of the Reference Model

Transmitted by the IRU

1. Chapter 0.2.3, page 12:

Replace existing figure 0.1 with following figure:



The proposed scheme illustrates a more pragmatic approach by:

- comparing the needs and requirements (E Business future) with the existing system;
- define the difference, which is what still must be developed or modified;
- define the steps based on the difference, and according to stakeholder priorities.

2. Annex 1 – Requirements list, Requirement 28 page 76:

The international organization (*add: and the associations*) use the control system for TIR Carnets to check TIR Carnets.

3. Annex 2 – TIR glossary page 79:

Term: Goods Manifest line item: *replace beginning of current definition with following:*

Goods Manifest Line Item expresses the way goods are described and listed in the TIR carnet according to the points B.10.a), d), e) of the “Rules regarding the use of the TIR carnet”. Specifically, these rules state...(remains unchanged).

4. Attributes listed in document ExG/COMP/2002/10

During the discussions held over the last sessions, the ExG made several references to the attributes identified during the Second session (held in Prague on 14 and 15 November 2002), listed in the Annexes 3 and 4 of document ExG/COMP/2002/10.

It is proposed that the Annexes 3 and 4 of document ExG/COMP/2002/10 Annexes are incorporated in the Reference Model. The High level Class Diagram should be enhanced with the attributes listed, and any others that might be missing.

It will clarify for everybody what is meant by the data classes and is a level of detail clearly required defining the future system and the effort required to achieve it.
