

**ECONOMIC COMMISSION FOR EUROPE**

Informal document GE.1 No. 1 (2011)

**INLAND TRANSPORT COMMITTEE**

4 March 2011

Working Party on Customs Questions affecting Transport

**ENGLISH ONLY**

Informal Ad hoc Expert Group on Conceptual and  
Technical aspects of Computerization of the TIR  
Procedure

Eighteenth session

Geneva, 9-10 March 2011

Item 3 (c) of the provisional agenda

---

## REFERENCE MODEL OF THE TIR PROCEDURE

### Proposed amendments to the Reference Model

Note by the secretariat

#### **A. BACKGROUND**

1. In December 2009, the TIR secretariat met with representatives from the International Road Transport Union (IRU) in order to discuss IRU's reservations with regard to the eTIR project, in particular certain aspects of Chapter 2 of the eTIR Reference Model, as endorsed by WP.30. With the aim to find a compromise solution, which would be acceptable to both Contracting Parties to the TIR Convention and IRU, the secretariat proposed two possible amendments to the eTIR Reference Model, which should allow IRU to support the eTIR project. During a consecutive meeting, which took place in February 2011, IRU confirmed that the proposals could solve its problems with regard to the eTIR Reference Model.

2. The proposals address the following two issues:

- a) The need for the provision of standard advance declaration mechanisms other than the direct submission of the declaration to Customs authorities; in particular in situations where transport operators are obliged to submit electronic declarations in other countries than their own;
- b) The validation of the guarantee at the first Customs office of departure against the data base of the guarantee chain.

**B. PROPOSED AMENDMENTS**

3. Further to the meeting, the secretariat drafted the following amendments to the text of version 3.0a of the eTIR Reference Model<sup>1</sup> in order to implement the alternative procedures.

**1. Declaration mechanisms**

4. Considering that various national electronic declaration mechanisms require some type of authentication, the electronic submission of declarations by transport operators to foreign Customs authorities might, at times, be difficult or requiring the paid services of third parties, such as Customs brokers. Bearing this in mind, it seems appropriate to include in the eTIR project alternative declaration mechanisms. One would be provided by the eTIR international system (allowing both the submission of EDI and keyed-in declarations) and the other one would be provided by the private sector itself, such as IRU's TIR-EPD.

5. In this context, IRU is ready to cooperate with the secretariat and share its experiences with the development of the TIR-EPD system.

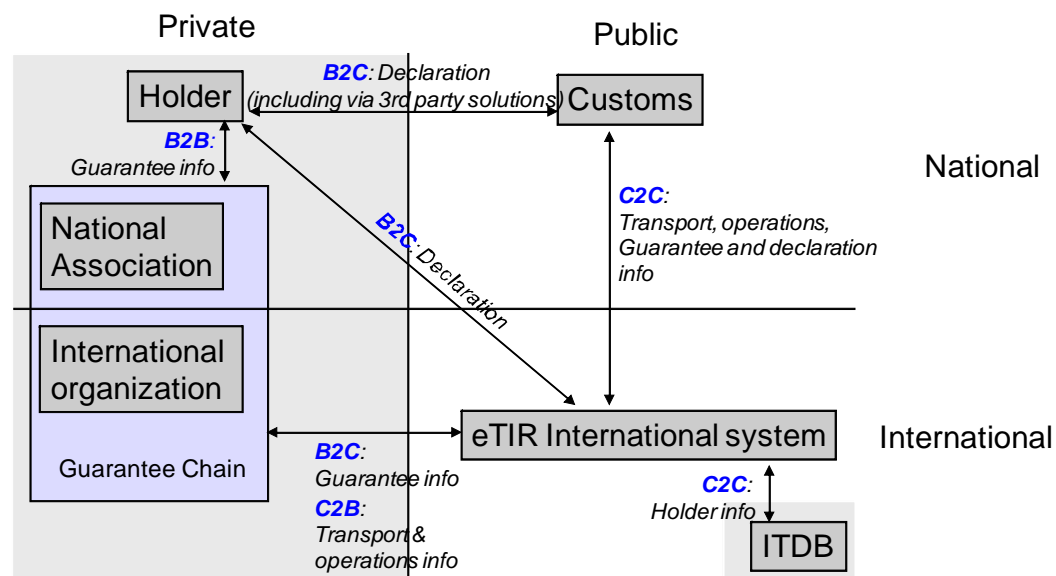
6. Subject to the acceptance of the below amendments, this proposal could be included in version 3.0 of the eTIR Reference Model:

- **Chapter 2.1.2.1. eTIR International System brief**

[...]

Figure 2.1

**The new public private partnership**



[...]

<sup>1</sup> ECE/TRANS/WP.30/GE.1/2011/3

- **Chapter 2.1.2.4.2. Declaration**

The holder submits the advance cargo information by electronic means to the Customs office of departure, making reference to a guarantee issued by a Guarantee Chain, using authentication mechanisms. The declaration shall be submitted prior to the presentation of the goods at the Customs office of departure. **Alternatively, the holder can make use of declaration mechanisms provided by either the eTIR international system or the private sector.**<sup>2</sup>  
[...]

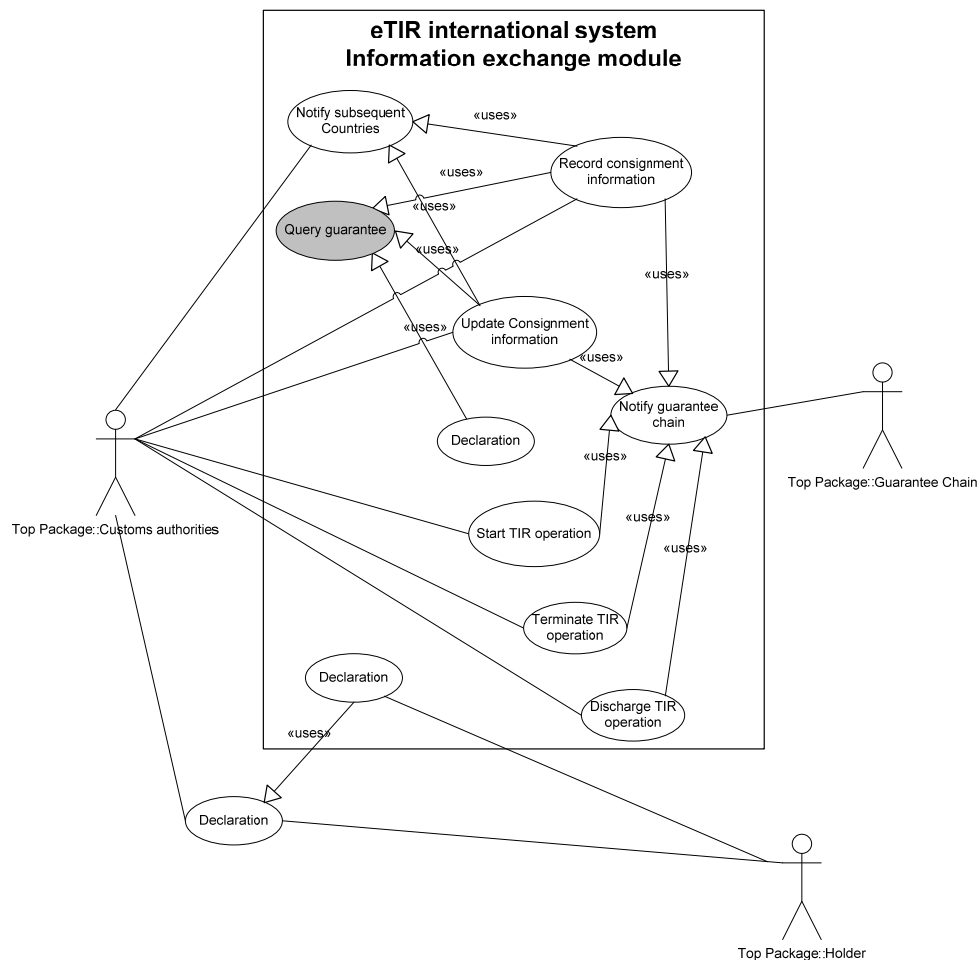
- **Chapter 2.1.3.2.2. Web services**

Web services implemented at the central platform allow authorized computer systems to interact securely with the eTIR international system. The web services provide, in a standard format, the functions which allow querying and updating the central database, **as well as the centralized submission of advance cargo information.**

- **Chapter 2.3.2. Data exchange use case**

Figure 2.2

Customs management of guarantees use case diagram



[...]

<sup>2</sup> Amendments to the text of version 3.0 are in **bold-underlined**. All figures presented in this document describe the alternative procedures.

- **New Chapter 2.3.2.16. Advance cargo information use case description**

Table 2.15

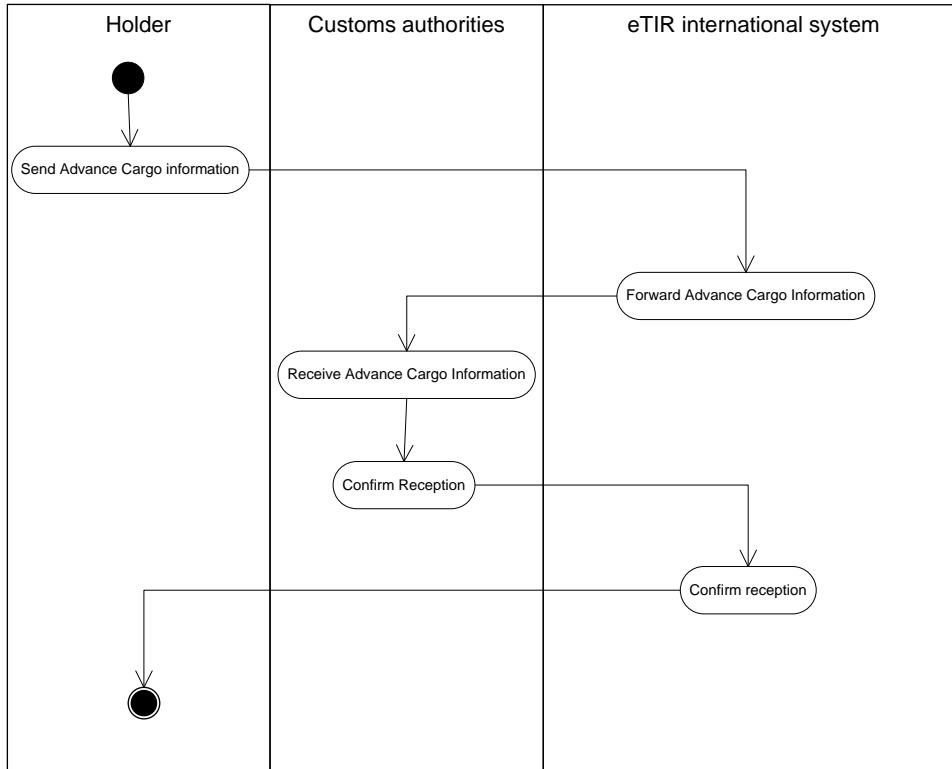
**Advance cargo information use case description**

<u>Name</u>	<u>Declaration use case</u>
<u>Description</u>	<u>The holder transmits an advance cargo declaration to the eTIR international system that then forwards it to the Customs authorities of the country of first Customs office of departure.</u>
<u>Actors</u>	<u>Holder, Customs authorities</u>
<u>Performance Goals</u>	
<u>Preconditions</u>	<u>The holder is registered in the Authentication database (see 2.1.3.2.10)</u>
<u>Postconditions</u>	<u>:</u>
<u>Scenario</u>	<u>:</u>
<u>Alternative Scenario</u>	<u>Fallback scenario</u> <u>In case transmission by means of web services is not available, the holder can use the eTIR website or other available declaration mechanisms.</u>
<u>Special requirements</u>	<u>:</u>
<u>Extension Points</u>	<u>:</u>
<u>Requirements Covered</u>	<u>:</u>

- New Chapter 2.3.2.17. Advance cargo information activity diagram**

Figure 2.17

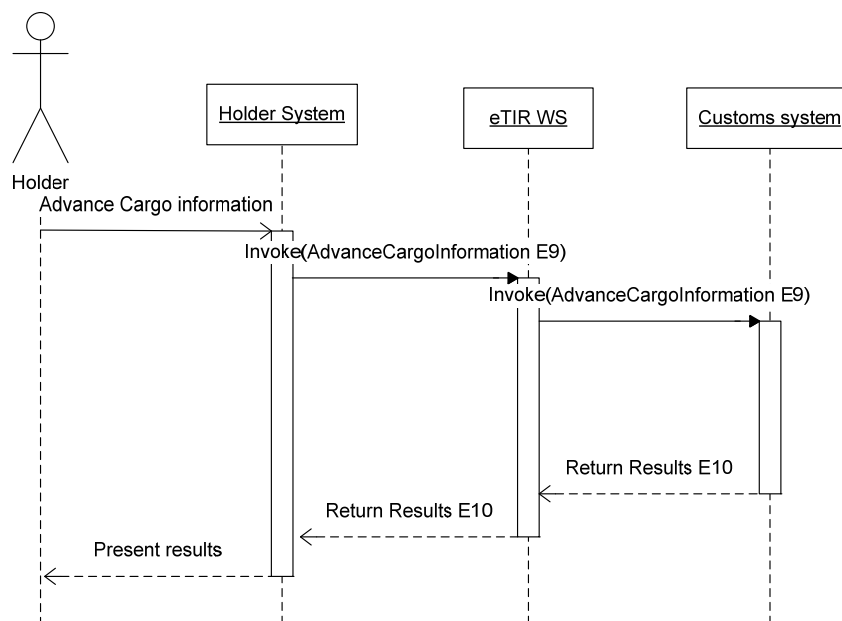
**Advance cargo information activity diagram**



- New Chapter 3.1.1.2.8 Advance cargo information**

Figure 3.15:

**Advance cargo information sequence diagram**



- **New Chapter 3.1.2.2.8. Advance cargo information**

**Potential problems:**

1. **The Customs system is not functioning.**
2. **The connection between the Customs system and the eTIR international system is broken.**
3. **The eTIR international system is not functioning.**

**Fall-backs:**

1. **The eTIR international system notifies the holder that the declaration could not be forwarded and proposes the use of the eTIR website or alternative declaration mechanisms.**
2. **The eTIR international system notifies the holder that the declaration could not be forwarded and proposes the use of the eTIR website or alternative declaration mechanisms.**
3. **The holder shall try to use the eTIR website or alternative declaration mechanisms.**

## **2. Guarantee validation**

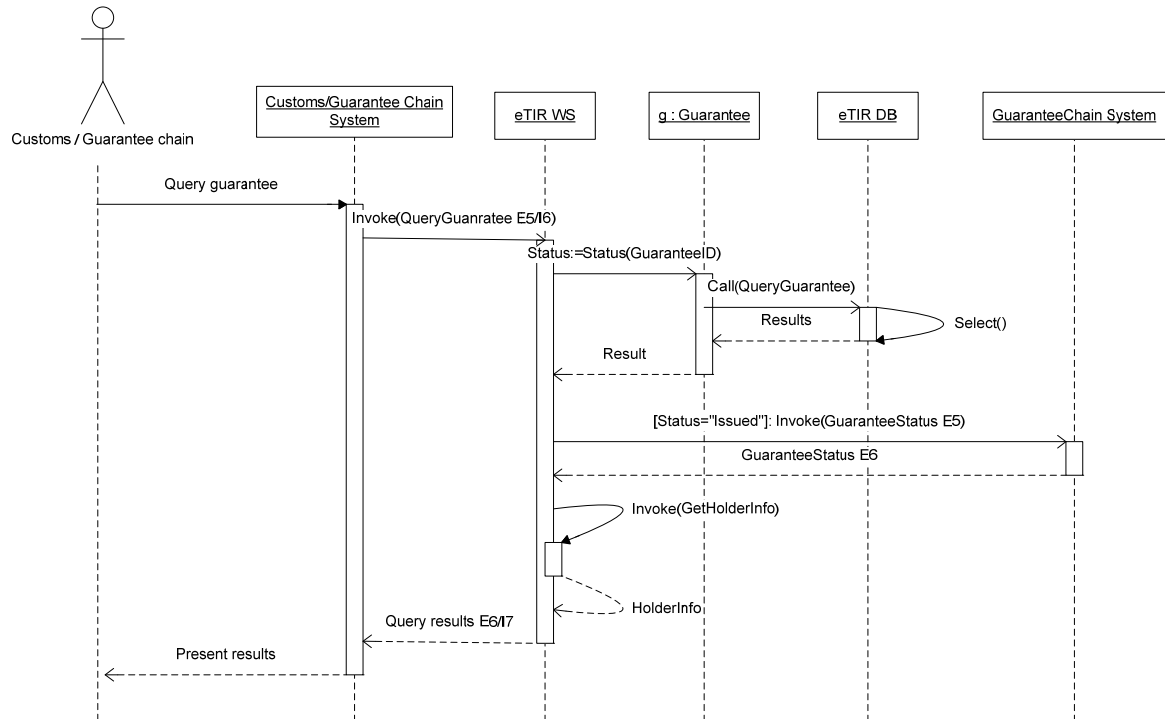
7. The validation of the guarantee by the guarantee chain for all guarantees that have not yet been accepted by Customs could be easily implemented as queries from Customs systems would all pass through the eTIR international system.

8. This proposal could be included in version 3.0 of the eTIR Reference Model if the following amendments would be accepted:

• Chapter 3.1.1.1.5. Query guarantee

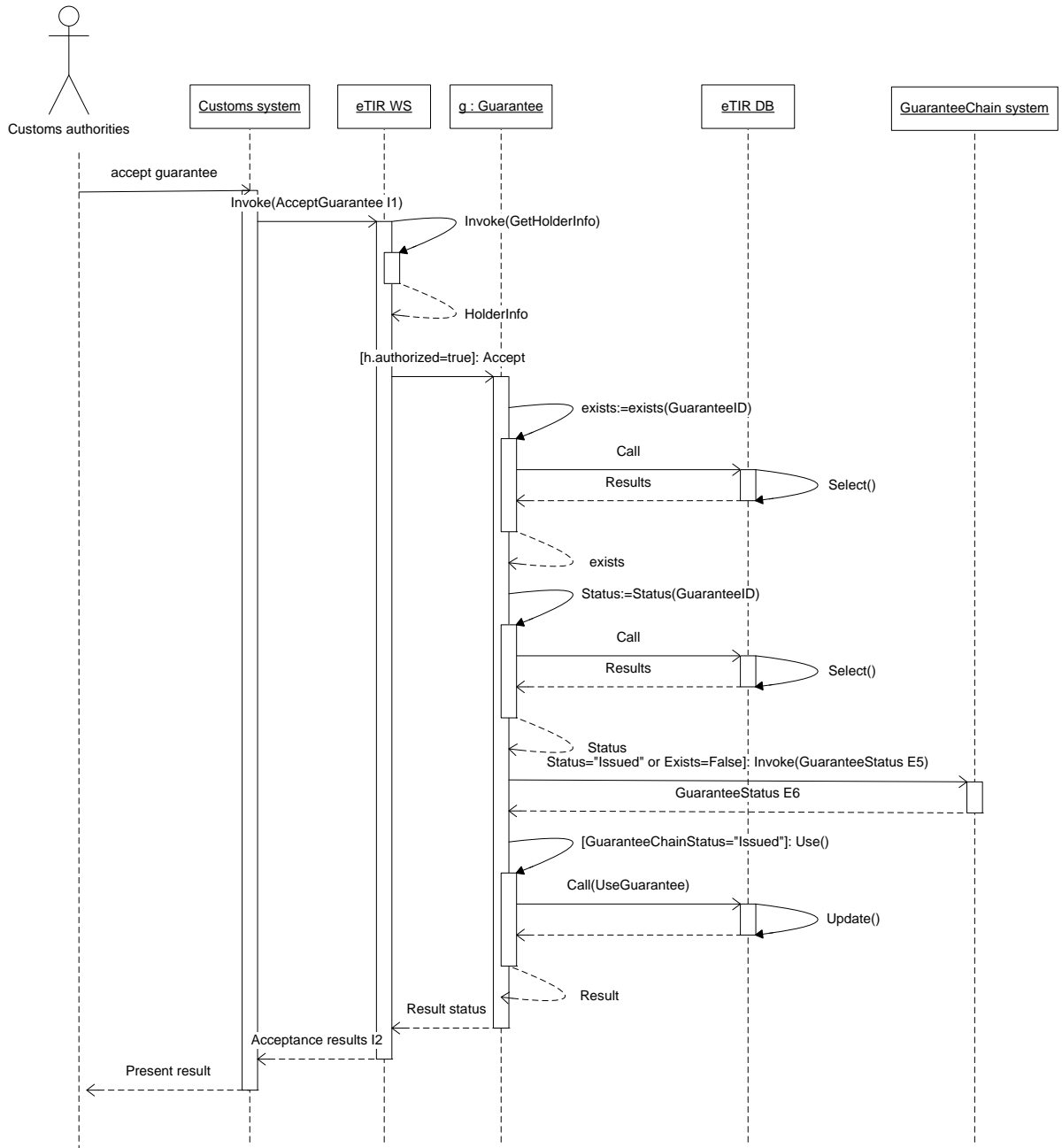
Figure 3.1:

Query guarantee sequence diagram



• Chapter 3.1.1.1.4 Accept guarantee

Figure 3.2:  
Accept guarantee sequence diagram





- **Chapter 3.1.2.1.3. Accept guarantee**

Potential problems:

[...]

4. **The guarantee system cannot be contacted.**

Fall-backs:

[...]

4. **The eTIR international system will rely on the data stored in the system as sent by the guarantee chain.**

- **Chapter 3.1.2.1.5. Query guarantee**

Potential problems:

[...]

6. **The guarantee system cannot be contacted.**

Fall-backs:

[...]

6. **The eTIR international system will rely on the data stored in the system as sent by the guarantee chain.**

## C. FURTHER CONSIDERATIONS

9. The Expert Group may wish to discuss the two proposals and, possibly, request the secretariat to amend the eTIR Reference Model accordingly and submit the amended version of the eTIR Reference Model for endorsement to WP.30.
-