

**Economic and Social Council**Distr.: General
26 July 2017

Original: English

**Food and Agriculture Organization
of the United Nations****Economic Commission for Europe****Committee on Forests and the Forest Industry****Seventy-fifth session**

Warsaw, Poland 9-13 October 2017

Item 2(h) of the provisional agenda

Joint Committee/Commission matters:**Integrated Programme of Work****Food and Agriculture Organization****European Forestry Commission****Thirty-ninth session**

Warsaw, Poland 9-13 October 2017

Draft Integrated Programme of Work**Note by the Secretariat***Summary*

Further to a thorough review of the 2013-2017 Integrated Programme of Work (IPoW) to extract lessons learned and several consultations consistent with a Roadmap proposed by the Joint Bureaux (the Committee Bureau and the Commission Executive Committee), a draft 2018-2021 IPoW was presented and reviewed at the thirty-ninth session of the Working Party on Forest Statistics, Economics and Management in Geneva from 29 to 31 March 2017. This document contains the draft IPoW (Scope; Overall Goal; Objective; Structure and Work Areas; Principles guiding implementation, Support and Resources; and Expert Support) for COFFI and EFC, as recommended by the Joint Working Party on Forests Economics, Statistics and Management. At the time of writing of this note, the COFFI Bureau was in agreement with transmitting this draft text to Las2017, while EFC was consulting and may propose amendments to the text. In that case, proposals for amendments will be submitted separately as an addendum.

Document ECE/TIM/2017/8- FO:EFC/2017/8 includes the Terms of Reference of the ECE/FAO Teams of Specialists and of the Joint ECE/FAO Working Party on Forest Statistics, Economics and Management.

The Committee and the Commission are invited to review the draft decisions and the IPoW for their adoption.



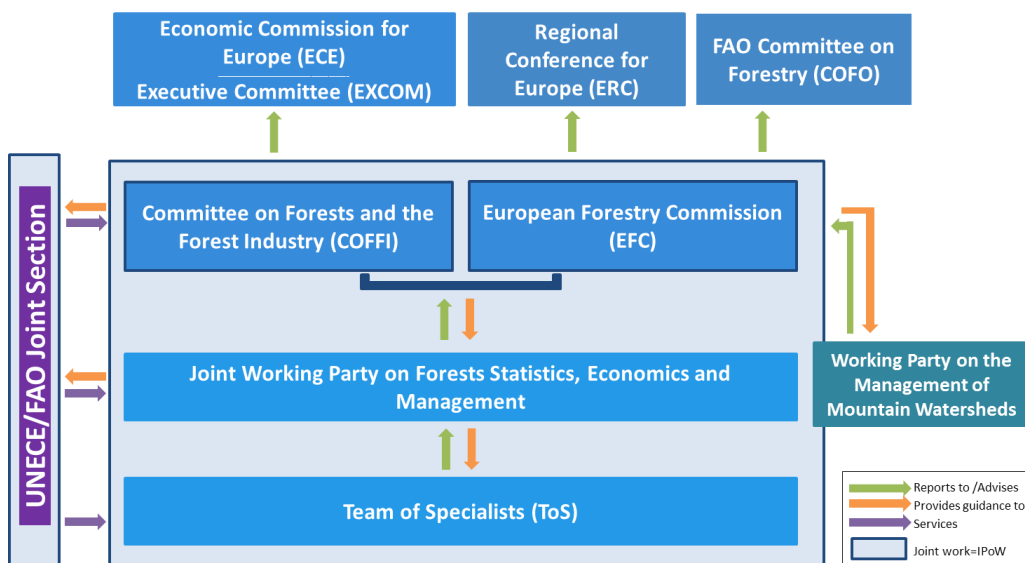
I. Draft decisions in support of the implementation of the Integrated Programme of Work

1. The “Las2017”, the Joint Session of COFFI and EFC which took place in Warsaw, Poland from 9 to 13 October 2017 made the following decisions:

1.1 Adopt the attached Integrated Programme of Work for the period 2018-2021.

1.2 Formal governance is undertaken by the two parent bodies, the ECE COFFI and the FAO EFC, which have the ultimate oversight responsibility for the implementation of the Integrated Programme of Work. The frequency of meetings is decided in accordance with their respective rules of procedure. According to established practice, COFFI meets annually, while the EFC meets every second year. COFFI and EFC will hold joint sessions [in 2019 and 2021] with the aim to further strengthen cooperation, build on synergies and ensure cost efficiency. [Mid-term review and other amendments in the Integrated Programme of Work would be considered during the COFFI sessions with participation of the EFC Executive Committee]. During joint meetings, matters of relevance to COFFI or the EFC only would be considered separately and under specific agenda items during these sessions. The Joint ECE/FAO Working Party on Forest Statistics, Economics and Management, a subsidiary body of the COFFI and the EFC which contributes to the implementation of the Integrated Programme of Work, meets annually.

Governance structure for the IPoW of EFC and COFFI



1.3 The Bureau of COFFI and the Executive Committee of the EFC are entrusted with overseeing the implementation of the Integrated Programme of Work and with providing guidance as needed. They have the authority to take decisions to support the implementation of the Integrated Programme of Work between sessions of the parent bodies. They should meet jointly at least twice annually and inform the member States about their decisions as appropriate.

1.4 Joint sessions should have the same name for each session – “forest” in the language of the country hosting the session and then the year of the session, when taking place outside ECE and FAO Headquarters.

1.5 Continue and maintain the joint preparation and implementation of the Integrated Programme of Work. The joint secretariat will service the joint sessions of the two intergovernmental bodies, the joint meetings of the Bureaux, produce joint publications and have a joint profile.

1.6 Encourage member States to strengthen coordination between COFFI and EFC delegates at the national level in implementation of the Integrated Programme of Work (for example, by appointing the same Head of Delegation for both).

1.7 Engage COFFI and EFC members in linking the ECE and FAO work to activities at the national level in order to ensure feedback on the Integrated Programme of Work and encourage the cooperation between countries in this regard.

Data management

2. Data on forests and forest management are collected through regular and ad hoc processes. They are often collected, stored and disseminated separately, through different means and formats. Taking into account relatively long data collection cycles, this situation seriously hampers continuity, inter-connectivity, and planning for data collection and its management. This also limits the availability and usability of the information collected.

3. It is recommended that the organization and structure of data on forests (collected and retained by the Joint ECE/FAO Forestry and Timber Section), their management, their functions and their services be analyzed. While avoiding any duplication with existing similar repositories, the results of this analysis would provide the basis for the establishment of an electronic repository, enhancing the efficiency of data collection, management and dissemination.

Private sector

4. The involvement of the private sector, given its relevance to the work undertaken by the Committee and the Commission, should be increased, including through the enhanced participation in existing subsidiary and expert bodies, which could then provide advice to the ECE and FAO regarding further private sector engagement.

Funding

5. The final list of activities prepared every year should contain a related budget (and should include both human and financial resource needs) to help member States recognize funding needs and understand the feasibility of activities. Additional sources of funding will be sought from relevant global, regional and national donor organizations.

Outreach

6. To the upmost extent possible, communication activities shall be implemented with due regard to keeping a balance between subregions and between official languages of COFFI and the EFC in order to increase the impact and visibility of work. Outreach activities might include a high level segment in key meetings, which would bring together ministers and chief executive officers of private companies, and heads of other organizations.

Partnerships

7. Partnerships, within the scope of ECE and FAO relevant policies, should be established with other sectors, including through cooperation with other ECE Committees. Partnerships should be designed to serve to demonstrate the value of forests and forest products for other sectors (energy, environment, housing, employment, climate change, etc).
8. Cooperation with other intergovernmental organizations and processes, including Forest Europe, the European Union, the CIS Intergovernmental Council on Forestry and the Forest Industry, the European Forest Institute (EFI), IUFRO, the United Nations Forum on Forests and the International Tropical Timber Organization (ITTO), amongst others, should be fostered.
9. Good examples of cross-sectoral cooperation should be highlighted and showcased whenever possible.
10. Partnerships are expected to enhance synergies of work and cooperation amongst relevant organizations to avoid fragmentation of regional work on forests.

II. Draft Integrated Programme of Work

11. The oversight responsibility for the implementation of the Integrated Programme of Work of the Committee on Forests and the Forest Industry (COFFI) and the European Forestry Commission (EFC) remains with the members of the Committee and the Commission.
12. The implementation and coordination responsibilities for the Integrated Programme of Work of the Committee on Forests and the Forest Industry (COFFI) and the European Forestry Commission (EFC) rests primarily with ECE and FAO through the Joint ECE/FAO Forestry and Timber Section. The implementation is supported by the ECE/FAO Joint Working Party on Forest Statistics, Economics and Management (JWP), the ECE/FAO Teams of Specialists, as well as relevant units of the ECE and FAO. The Programme is also implemented with the support of member States, in close cooperation with relevant organizations and processes at all levels and other relevant stakeholders participating in the Committee and Commission intergovernmental processes.

A. Scope

13. The Integrated Programme of Work covers all fifty-six member States of the ECE region, in line with the ECE COFFI membership¹. Thirty-nine member States, which are all ECE member States, and the European Union, are members of the EFC².

¹ Albania, Armenia, Austria, Azerbaijan, Belarus, Belgium, Bulgaria, Canada, Croatia, Cyprus, Czech Republic, Denmark, Estonia, Finland, France, Georgia, Germany, Greece, Hungary, Iceland, Ireland, Israel, Italy, Kazakhstan, Kyrgyzstan, Latvia, Lithuania, Luxembourg, Malta, Republic of Moldova, Montenegro, Netherlands, Norway, Poland, Portugal, Romania, Russian Federation, Serbia, Slovakia, Slovenia, Spain, Sweden, Switzerland, Tajikistan, The former Yugoslav Republic of Macedonia, Turkey, Turkmenistan, Ukraine, United Kingdom, United States and Uzbekistan.

² Albania, Austria, Belarus, Belgium, Bulgaria, Croatia, Cyprus, Czech Republic, Denmark, Estonia, Finland, France, Germany, Greece, Hungary, Iceland, Ireland, Israel, Italy, Latvia, Lithuania, Luxembourg, Malta, Netherlands, Norway, Poland, Portugal, Romania, Russian Federation, Slovakia, Slovenia, Spain, Sweden, Switzerland, The former Yugoslav Republic of Macedonia, Turkey, Ukraine, United Kingdom, Uzbekistan and the European Union.

14. The Programme encompasses the following main topics related to forests, sustainable forest management and the forest sector:

(a) The state of forests and forest management, biodiversity conservation, mitigation of and adaptation to climate change, restoration of forests and other forest-related environmental issues;

(b) The implementation and promotion of sustainable forest management;

(c) Forest related industries, the use of forest products, as raw material, construction, and energy; and related innovation perspectives;

(d) Forest and forest sector policies, institutions and instruments, including the linkages between forest and timber policies and other sectoral policies;

(e) The contribution of the forest sector in the transition towards a green economy, forest products and ecosystem services, employment and other socio-economic aspects; including economic viability of the sector;

(f) The implementation of the United Nations 2030 Agenda for Sustainable Development (2030 Agenda) and the achievement of the forest-related Sustainable Development Goals (SDGs) as well as the implementation of UN Strategic Plan for Forests 2017-2030.

B. Overall goal

15. The overall goal of the Integrated Programme of Work 2018-2021 for COFFI and the EFC, the Joint ECE-FAO Working Party for Forests Statistics, Economics and Management and the Teams of Specialists, is to support member States, international organizations and relevant stakeholders in their efforts to sustainably manage and use forests so that they provide products and ecosystem services to benefit society.

C. Objective of the Integrated Programme of Work

16. The Integrated Programme of Work aims to assist member States to achieve the overall goal described above by: providing the best available information; facilitating policy dialogues and communication; and building capacity.

17. It will contribute to the implementation of: (i) the United Nations 2030 Agenda for Sustainable Development and the achievement of the SDGs, (ii) the United Nations Strategic Plan for Forests 2017-2030, (iii) the United Nations Forum on Forests (UNFF) Quadrennial Programme of Work 2017-2020, (iv) the Aichi Biodiversity Targets, (v) the Bonn Challenge, (vi) the Rovaniemi Action Plan for the Forest Sector in a Green Economy, (vii) the Paris Agreement adopted under the United Nations Framework Convention on Climate Change, (viii) other international objectives relevant to forests.

D. Structure and work areas

18. The Integrated Programme of Work remains structured around four main functions, or work areas (WA), as follows:

WA 1: Data, monitoring and assessment

WA 2: Policy dialogue and advice

WA 3: Communication and outreach

WA 4: Capacity-building

19. The Programme refers to the Rovaniemi Action Plan for the Forest Sector in a Green Economy, which was adopted by the ECE COFFI and the FAO EFC at their joint sessions in December 2013 (Metsa2013). Actions contained in that Plan and attributed to the joint ECE/FAO Forestry and Timber Section are indicated in an annex to the Plan with an asterisk and are reflected in the annual list of activities as part of the Integrated Programme of Work 2018-2021, subject to availability of financial and human resources.

20. Specific activities and outputs proposed for the four work areas are outlined below.

WA 1: Data, monitoring and assessment

21. The data collection and reporting work in the region consists of the following:

(a) Collection, validation and dissemination of statistics and other information on: forest resources, forest products (wood and non-wood), forest functions and services, progress toward sustainable forest management, forest policies, institutions and instruments, and the contribution of the forest sector to a green economy;

(b) Analysis and assessment of the state of forests, sustainability of forest management and forest products markets; and monitoring the role of the forest sector in a green economy;

(c) Cooperation and support to international processes on sustainable forest management, including the development and use of regional Criteria and Indicators and collaboration with Forest Europe in the preparation of the report on the State of Europe's Forests.

22. The monitoring and analysis of developments in various forest-related areas and cooperation with other relevant organizations working in these areas, while avoiding duplication. This includes the gathering of comprehensive statistics and data (quantitative and qualitative), and developing methodologies for data collection, analysis and assessments on:

(a) Forest product markets and services;

(b) Current forest conditions, sustainable forest management, and the functions and services forests provide;

(c) Long-term supply of and demand for wood and other forest goods and services;

(d) Use of wood energy and its implications for sustainable forest management;

(e) Jobs, employment and working conditions.

23. Data are collected in partnership with member States, international organizations and the scientific community, based on agreed standards and rules. The Team of Specialists will pay particular attention to the integration and consolidation of reporting activities with other processes in the region (e.g. Forest Europe, FRA process). Activities under WA1 are also expected to improve the quality of information, ensuring international compatibility, storage, dissemination and analysis of the information, and to assist member States in strengthening their capacity in this area (see WA 4 on capacity-building).

24. Outputs from this work area include: the Forest Products Annual Market Reviews; the State of Europe's Forests (in collaboration with Forest Europe); the Joint Forest Sector Questionnaire (JFSQ); Timber Forecast Questionnaire (TFQ); Joint Wood Energy Enquiry (JWEE); the Collaborative Forest Resources Questionnaire (CFRQ); the regional input to the FAO Global Forest Resource Assessment (FRA) in cooperation with Forest Europe;

associated databases of the previously mentioned outputs; forecast tables; the reporting of progress towards implementation of the 2030 Agenda on Sustainable Development and achievement of forest-related SDGs, and the UN Strategic Plan for Forests 2017-2030 ; studies on forest employment and working conditions; assessment of the contribution of the forest sector to a green economy; and ad hoc enquiries and studies contributing to areas mentioned under items 9 and 10, upon decision by COFFI and the EFC.

WA 2: Policy dialogue and advice

25. This work area includes contributions to the implementation of the 2030 Agenda for Sustainable Development and forest related SDGs, the UN Strategic Plan for Forests 2017-2030 and to the global (mainly UNFF and FAO Committee on Forestry (COFO)), regional (in particular, CIS Intergovernmental Council on Forestry and Forest Industry, Eurasian Economic Commission, European Commission, European Forest Institute (EFI) and Forest Europe) and national forest dialogues. Activities in this work area also contribute to efforts to promote cross-sectoral cooperation.

26. This component also involves the organization of policy dialogues and specific studies in the ECE region, and at the national level on request from member States. The subjects to be covered will, depending on availability of financial and human resources, address issues mentioned in the scope of the Integrated Programme of Work (part I.A).

27. Outputs from this work area include: analyses, guidelines and recommendations to support member States in implementing the 2030 Agenda and achieving its forest related SDGs, the UN Strategic Plan for Forests 2017-2030 and countries Voluntary Planned Contributions for its achievement, the UNFF Quadrennial Programme of Work 2017-2020, the Rovaniemi Action Plan for the Forest Sector in a Green Economy and the Paris Agreement; contributions to the Forest Europe Work Programme 2016-2020; National Forest Policy Dialogues and other policy dialogues and workshops for the ECE region; the next Forest Sector Outlook Studies; and the policy-related parts of relevant ECE and FAO joint work/studies, such as relevant reviews and reports on the status and trends in forests and sustainable forest management.

WA 3: Communication and outreach

28. Communicating effectively within and outside the forest and forest products sector is essential to promote sustainable forest management. Enhancing the efforts of the Committee and the Commission to reach out to relevant constituencies to draw attention to the regional priorities in the forest sector and to increase the dissemination of the information and tools produced, at the national, regional and global levels, will make an important contribution to this end. This will be achieved through:

(a) Providing a platform for international cooperation in forest related communication (through the Forest Communicators Network Team of Specialists);

(b) To contribute to the dissemination of information on and the implementation of WA1, WA2 and WA4;

(c) Organizing events and campaigns in support of sustainable forest management and forest products and services (e.g. the International Day of Forests, the European and Global Forest Weeks);

(d) Dissemination of information produced under the Integrated Programme of Work via policy briefs, press briefs, the Forest Information Billboard, social media/networks, videos and ad hoc studies, whenever results are available and new information released;

(e) Maintaining and improving the ECE/FAO website especially regarding user-friendliness and design;

(f) Contributing to the organization of relevant events in member States and the dissemination of their forest-related announcements (e.g. capacity building workshops, special public relations events) in cooperation with member States and other stakeholders;

(g) Carrying out outreach activities beyond the forest sector for disseminating information that highlights the relevance of forests and forest products and services to other sectors (e.g. energy events, biodiversity and environment meetings, sustainable construction and buildings);

(h) Communicating effectively the news and updates from the work at other forest-related international fora.

29. Outputs from this work area include: events and campaigns (e.g. contribution to the organization of International Forest Day events, contribution to the organization of the European Forest Week, etc.); policy briefs; press briefs; contribution to the Forest Information Billboard; contribution to, and dissemination of, ad hoc studies through communication channels; and inputs to the website.

WA 4: Capacity-building

30. While all member States benefit from international cooperation through the Integrated Programme of Work, technical assistance is available to countries in Eastern and South Eastern Europe, the Caucasus and Central Asia. This work on capacity-building aims at encouraging sustainable forest management, data collection, monitoring and analysis as well as promoting the engagement of national experts from the region in international activities relevant to the region, including issues such as forest restoration and the Bonn Challenge. It covers the themes encompassed in the scope of this Integrated Programme of Work, with a particular focus on:

- (a) National systems for forest monitoring and statistical reporting;
- (b) Forest communication strategies;
- (c) Mitigation of and adaptation to climate change;
- (d) Forest Landscape Restoration (FLR) and the Bonn Challenge;
- (e) The contribution of the forest sector to a green economy.

31. The implementation of the 2030 Agenda for Sustainable Development and the achievement of forest-related SDGs, the UN Strategic Plan for Forests 2017-2030 and countries' Voluntary Planned Contributions, and the Paris Agreement.

32. This work area also benefits from the implementation of the United Nations Development Account (UNDA) project on "Accountability Systems for Sustainable Forest Management in the Caucasus and Central Asia" (2016-2019).

33. Outputs from this work area include: publications; capacity building workshops; training material and recommendations; technical assistance; provision of specific, targeted expertise; enhanced cooperation and development of contacts in the target countries.

E. Principles guiding implementation

34. Implementation should be guided by the following principles, while building in flexibility when needed to achieve optimal results:

Partnership

35. There will be a strong focus on working in partnerships with international and regional actors as the most effective way of optimizing benefits and avoiding potential duplication of activities. COFFI and the EFC will seek and welcome cooperation for any of the relevant outputs under the four work areas.

Outreach to other constituencies

36. In the implementation of the IPoW, the Committee and the Commission will look beyond the traditional forest constituency to make sure the relevance of the forest sector and its contribution to other sectors is well recognized and understood. They will coordinate relevant actions with, for example, the environment, biodiversity, energy, water, agriculture, construction and building sectors, using the potentials offered by the ECE and FAO.

Expert advice

37. The work and expected outputs of the Teams of Specialists will be fully aligned with the Integrated Programme of Work and its objectives and will support the related areas of work, recognizing the importance of the involvement of the scientific community. In this context, the Forest Communicators Network should support other Teams on outreach efforts and for the dissemination of relevant products. Due regard should be given to the COFFI and EFC official languages when organizing meetings and issuing publications and documents, as appropriate.

Involvement of the private sector

38. The Integrated Programme of Work recognizes the private sector as a key actor for developing sustainable forest management, sustainable forest products and services and the transition towards a green economy. The participation of the private sector in the work of the Committee and the Commission will be actively sought, in line with the ECE and FAO organizational policies.

Gender mainstreaming

39. The Integrated Programme of Work gives due consideration to making the concerns and experiences of women and men an integral part of the design, implementation, monitoring and evaluation of its activities, so that women and men benefit equally and inequality is not perpetuated (UN ECOSOC, 1997). Gender mainstreaming is a central part of ECE and FAO's strategic frameworks and their policies and programmes.

F. Support to the Integrated Programme of Work and related resources

40. Progress in the implementation of the Integrated Programme of Work will be reported annually. The Integrated Programme of Work should have the flexibility to allow addressing from a technical perspective emerging issues of policy relevance and interest or influence to forestry and the forest industry. Activities not yet planned in this Integrated Programme of Work could be agreed on by the Committee and the Commission (or its Executive Committee, within the scope of the Commission's decisions).

41. Implementation will depend on regular programme funding levels and to a large extent on extrabudgetary resources, as well as available human resources. The member States and other donors are encouraged to support such activities in kind and/or with the necessary level of financial resources. The annual list of activities, which is submitted on an

annual basis to member States for their approval, will show clearly the areas of work (e.g. capacity-building) or activities where extrabudgetary funding will be needed.

42. A broader participation and more strategic engagement by member States and stakeholders should be sought. In particular, resources should be identified to finance the participation of delegates from eligible countries with economies in transition.

G. Expert support

43. The Teams of Specialists, composed of experts in particular fields, provide advice or undertake activities that support the implementation of the Integrated Programme of Work. Teams of Specialists may also provide guidance to the ECE/FAO Timber and Forestry Section on relevant work areas, help with outreach activities to country-level experts, and produce team-specific outputs in support of the Integrated Programme of Work. Teams of Specialists are established by the ECE EXCOM and human and financial resources are provided by both ECE and FAO through their separate budgetary processes. Their terms of reference are approved by COFFI and the EFC. The Teams of Specialists report annually to the Working Party on Forest Statistics, Economics and Management.

44. Guidelines for the Teams of Specialists clarifying the Teams' mandates and procedures, and the role and responsibilities of Team Leaders, and Deputy Leaders, Team Members and secretariat can be found in Part 2.
