

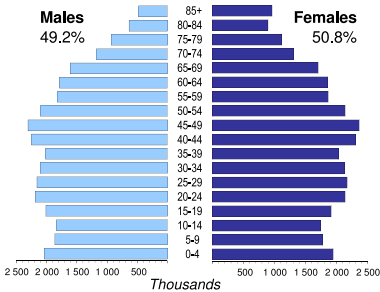


# UNITED KINGDOM

<b>Capital (population in thsd, 2013)</b>	London (8 417)
<b>Area (km<sup>2</sup>)</b>	242 910
<b>Total population (thsd, 2012)</b>	63 696
<b>Population density (per km<sup>2</sup>)</b>	262
<b>Official language(s)</b>	English
<b>National currency</b>	Pound sterling (GBP)
<b>National statistical office</b>	

Office for National Statistics  
[www.statistics.gov.uk](http://www.statistics.gov.uk)

## Population by age, 2012



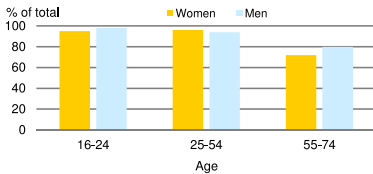
Life expectancy (in years)	at birth	
	2012	2012
Males	79.1	18.5
Females	82.8	20.9

**Total fertility rate, 2012**  
 average number of children per woman: 1.9

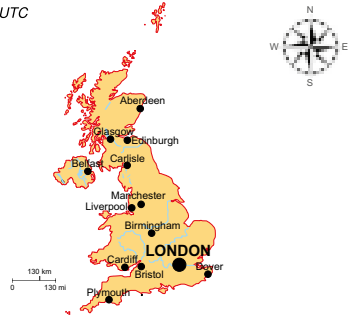
**Adolescent fertility rate, 2012**  
 number of live births per 1,000 women aged 15-19: 19.7

**Mean age of women at birth of first child, 2012**  
 age in years: 28.1

## Computer use by age and sex, 2013

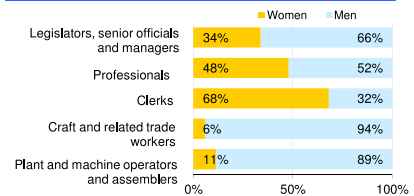


Time: UTC

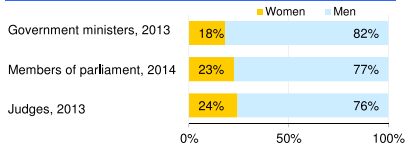


<b>Women in the labour force, 2013</b> percentage of total for both sexes	46%
<b>Gender pay gap</b> monthly earnings, 2010	25%
hourly wage, 2012	19%
<b>Women in part-time employment, 2013</b> percentage of total of women employed	42%
<b>Female tertiary students, 2011</b> percentage of total for both sexes	56%
<b>Women victims of homicide, 2011</b> percentage of total for both sexes	32%
<b>Women researchers, 2011</b> percentage of total for both sexes	38%

## Women and men in selected occupation groups, 2013



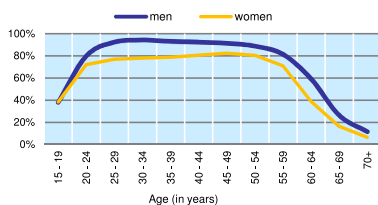
## Women and men in public life



# UNITED KINGDOM

	2008	2009	2010	2011	2012	2013
Employment (% change over previous year)	0.7	-1.6	0.2	0.5	1.2	1.3
Unemployment rate (%)	5.6	7.6	7.8	8.0	7.9	7.5
Youth unemployment rate (%)	15.0	19.1	19.6	21.1	21.0	20.5

## Economic activity rate, 2013



## GDP at current prices

millions of US Dollars, PPP, 2013	2 464 639
millions of GBP, 2013	1 713 302

## GDP at current prices, per capita

US Dollars, PPP, 2013	38 458
GBP, 2013	26 734

## Final consumption expenditure at current prices, per capita

US Dollars, PPP, 2013	32 718
-----------------------	--------

## Purchasing Power Parity (PPP)

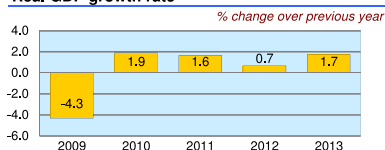
GBP per USD, US=1, 2013	0.695
-------------------------	-------

## Exchange rate

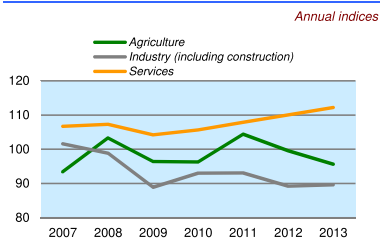
Annual average, GBP per USD, 2013	0.639
-----------------------------------	-------

	% of GDP
Exports of goods and services, 2013	29.8
Imports of goods and services, 2013	31.7
External trade balance, 2013	-1.9

## Real GDP growth rate



## GDP in agriculture, industry, services (2005=100)



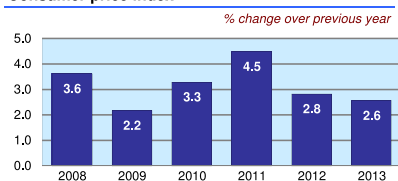
## Forest resources

Area of forest percentage of land area, 2010	11.9
---	------

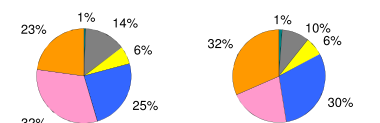
## Road accidents

Persons injured in road accidents, 2012	202 931
Persons killed in road accidents, 2012	1 802

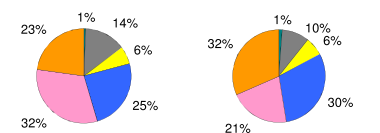
## Consumer price index



## GDP by major sectors, 2013



## Employment in major sectors, 2013



- Agriculture, forestry and fishing (ISIC 4 A)
- Manufacturing, mining and quarrying, energy and water supply (ISIC 4 B-E)
- Construction (ISIC 4 F)
- Wholesale and retail trade, transportation, accommodation and food, communication activities (ISIC 4 G-J)
- Financial, insurance, real estate and other business service activities (ISIC 4 K-N)
- Public administration and defence, education, health and other service activities (ISIC 4 O-U)

## Transport infrastructure

Railways total length in kilometres, 2010	15 884
Motorways total length in kilometres, 2011	3 686