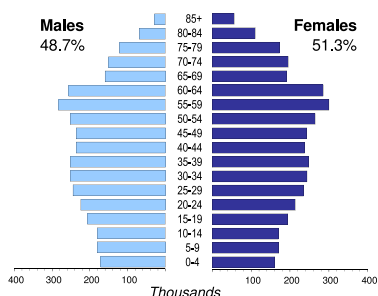




SERBIA

Capital (population in thsd, 2013)	Belgrade (1 670)
Area (km²)	88 361
Total population (thsd, 2012)	7 199
Population density (per km²)	81
Official language(s)	Serbian
National currency	Serbian dinar (RSD)
National statistical office	Statistical Office of the Republic of Serbia http://webzrs.stat.gov.rs

Population by age, 2012



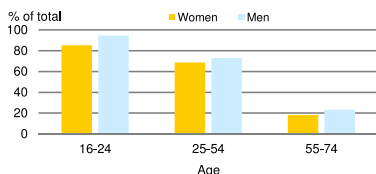
Life expectancy (in years)	at birth		at 65	
	Males	Females	2012	2012
	72.2	77.3	14.0	16.3

Total fertility rate, 2012
average number of children per woman: 1.4

Adolescent fertility rate, 2012
number of live births per 1,000 women aged 15-19: 19.4

Mean age of women at birth of first child, 2011
age in years: 27.5

Computer use by age and sex, 2013

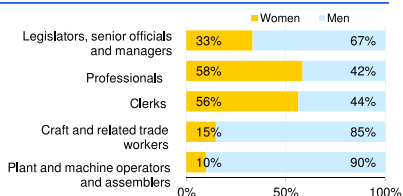


Time: UTC + 01:00

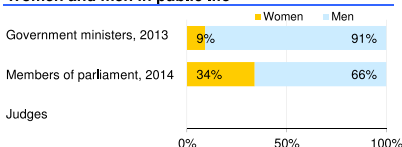


Women in the labour force, 2012 percentage of total for both sexes	43%
Gender pay gap monthly earnings, 2013 hourly wage	12% ..
Women in part-time employment, 2012 percentage of total of women employed	9%
Female tertiary students, 2010 percentage of total for both sexes	56%
Women victims of homicide, 2012 percentage of total for both sexes	32%
Women researchers, 2012 percentage of total for both sexes	50%

Women and men in selected occupation groups, 2010



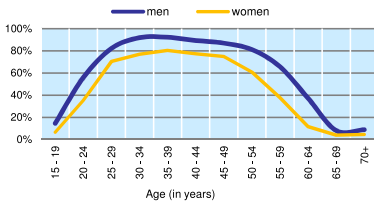
Women and men in public life



SERBIA

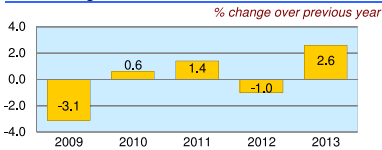
	2008	2009	2010	2011	2012	2013
Employment (% change over previous year)	6.3	-7.3	-8.4	-6.0	-1.1	3.7
Unemployment rate (%)	13.6	16.1	19.2	23.0	23.9	22.1
Youth unemployment rate (%)	35.2	41.6	46.2	50.9	51.0	49.4

Economic activity rate, 2012

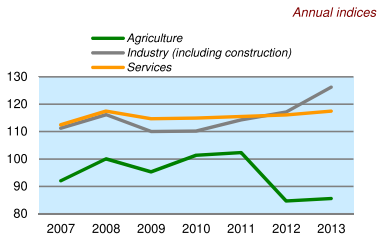


	% of GDP
Exports of goods and services, 2013	41.2
Imports of goods and services, 2013	51.9
External trade balance, 2013	-10.7

Real GDP growth rate



GDP in agriculture, industry, services (2005=100)



Forest resources

Area of forest percentage of land area, 2010	31.0
---	------

Road accidents

Persons injured in road accidents, 2012	18 406
Persons killed in road accidents, 2012	684

GDP at current prices

millions of US Dollars, PPP, 2013	94 900
millions of RSD, 2013	3 876 403

GDP at current prices, per capita

US Dollars, PPP, 2013	13 246
RSD, 2013	541 085

Final consumption expenditure at current prices, per capita

US Dollars, PPP, 2013	12 327
-----------------------	--------

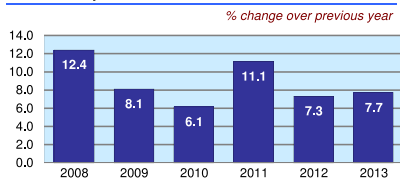
Purchasing Power Parity (PPP)

RSD per USD, US=1, 2013	40.847
-------------------------	--------

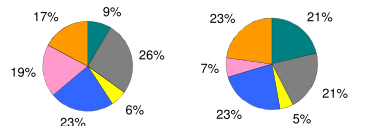
Exchange rate

Annual average, RSD per USD, 2013	84.918
-----------------------------------	--------

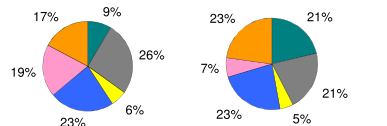
Consumer price index



GDP by major sectors, 2013



Employment in major sectors, 2013



- Agriculture, forestry and fishing (ISIC 4 A)
- Manufacturing, mining and quarrying, energy and water supply (ISIC 4 B-E)
- Construction (ISIC 4 F)
- Wholesale and retail trade, transportation, accommodation and food, communication activities (ISIC 4 G-J)
- Financial, insurance, real estate and other business service activities (ISIC 4 K-N)
- Public administration and defence, education, health and other service activities (ISIC 4 O-U)

Transport infrastructure

Railways total length in kilometres, 2010	3 809
Motorways total length in kilometres, 2010	495