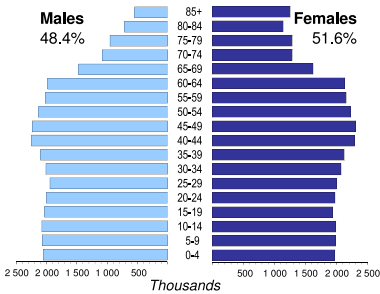




FRANCE

Capital (population in thsd, 2011)	Paris (2 249)
Area (km²)	551 500
Total population (thsd, 2012)	65 433
Population density (per km²)	119
Official language(s)	French
National currency	Euro (EUR)
National statistical office	National Institute of Statistics and Economic Studies (INSEE) www.insee.fr

Population by age, 2012



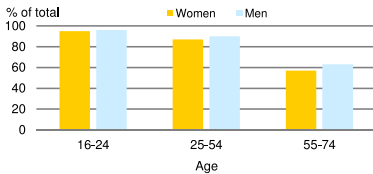
Life expectancy (in years)	at birth		at 65	
	Males	Females	2012	2012
	78.7	85.4	19.1	23.4

Total fertility rate, 2012
average number of children per woman: 2.0

Adolescent fertility rate, 2012
number of live births per 1,000 women aged 15-19: 10.6

Mean age of women at birth of first child, 2010
age in years: 28.1

Computer use by age and sex, 2013

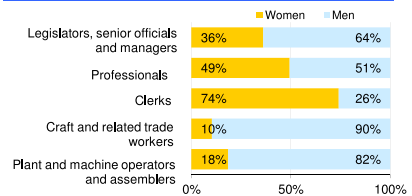


Time: UTC + 01:00

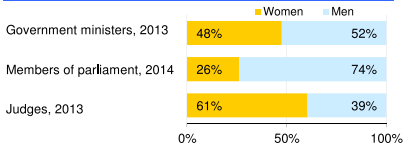


Women in the labour force, 2013 percentage of total for both sexes	48%
Gender pay gap monthly earnings, 2010 hourly wage, 2011	17% 16%
Women in part-time employment, 2013 percentage of total of women employed	31%
Female tertiary students, 2011 percentage of total for both sexes	55%
Women victims of homicide percentage of total for both sexes	..
Women researchers, 2011 percentage of total for both sexes	26%

Women and men in selected occupation groups, 2013



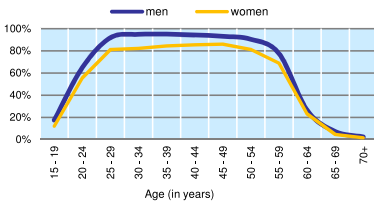
Women and men in public life



FRANCE

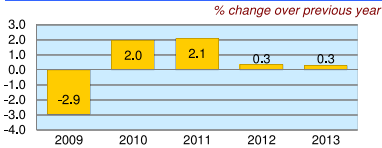
	2008	2009	2010	2011	2012	2013
Employment (% change over previous year)	0.5	-1.3	0.1	0.6	0.0	-0.1
Unemployment rate (%)	7.5	9.1	9.3	9.2	9.8	10.3
Youth unemployment rate (%)	18.6	23.2	22.9	22.1	23.9	23.9

Economic activity rate, 2013

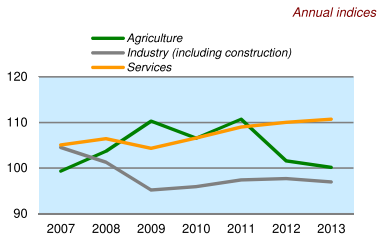


	% of GDP
Exports of goods and services, 2013	28.3
Imports of goods and services, 2013	29.8
External trade balance, 2013	-1.5

Real GDP growth rate



GDP in agriculture, industry, services (2005=100)



Forest resources

Area of forest percentage of land area, 2010	29.0
---	------

Road accidents

Persons injured in road accidents, 2012	75 851
Persons killed in road accidents, 2012	3 653

GDP at current prices

millions of US Dollars, PPP, 2013	2 500 621
millions of EUR, 2013	2 113 687

GDP at current prices, per capita

US Dollars, PPP, 2013	38 037
EUR, 2013	32 152

Final consumption expenditure at current prices, per capita

US Dollars, PPP, 2013	30 229
-----------------------	--------

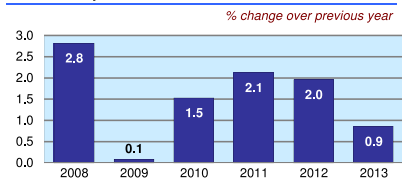
Purchasing Power Parity (PPP)

EUR per USD, US=1, 2013	0.845
-------------------------	-------

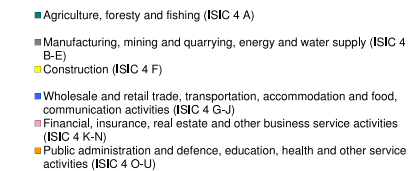
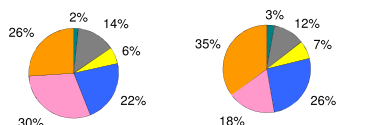
Exchange rate

Annual average, EUR per USD, 2013	0.753
-----------------------------------	-------

Consumer price index



GDP by major sectors, 2013



Transport infrastructure

Railways total length in kilometres, 2010	29 273
Motorways total length in kilometres, 2012	11 465