



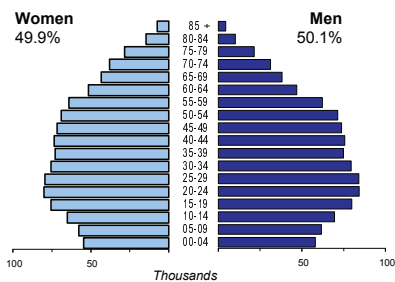
THE FORMER YUGOSLAV REPUBLIC OF MACEDONIA

Capital (population, 2009)	Skopje (313 605)
Two largest cities	Kumanovo (106 993)
	Bitola (93 689)
Area (km²)	25 713
Total population, 2009	2 050 671
Population density (per km²), 2009	80
Official languages	Macedonian
Date joined UN	8 April 1993
National currency	Macedonian denar (MKD)
National statistical office	State Statistical Office http://www.stat.gov.mk/

Time: UTC + 1h

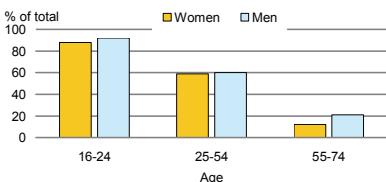


Population by age, 2009



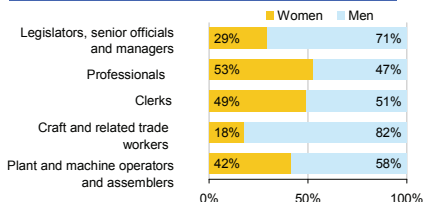
Life expectancy (in years), 2008	at birth	at 65
Women	77	16
Men	72	14
Total fertility rate, 2008	1.5	
average number of children per woman		
Adolescent fertility rate, 2008	20	
number of live births per 1000 women aged 15-19		
Mean age of women at birth of first child, 2008	25.6	
age in years		

Computer use by age and sex, 2009

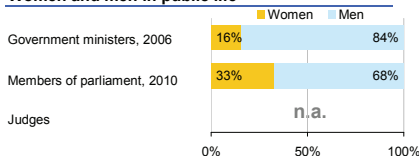


Women in the labour force, 2009	39%
percentage of total for both sexes	
Gender pay gap	
monthly earnings	..
hourly wage	..
Women in part-time employment, 2008	8%
percentage of total of women employed	
Female tertiary students, 2007	53%
percentage of total for both sexes	
Women victims of homicide, 2006	18%
percentage of total for both sexes	
Women researchers, 2006	50%
percentage of total for both sexes	

Women and men in selected occupation groups, 2007



Women and men in public life

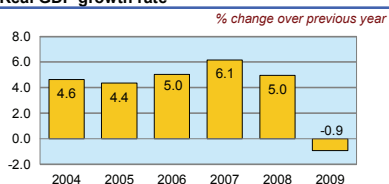


THE FORMER YUGOSLAV REPUBLIC OF MACEDONIA

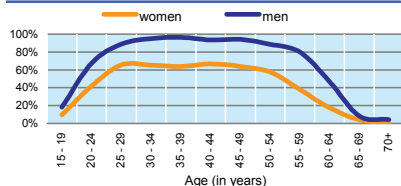
	2000	2005	2006	2007	2008	2009
Employment (% change over previous year)	0.3	2.1	3.2	4.3	6.2	3.4
Unemployment rate (%)	32.2	37.3	36.0	34.9	33.8	32.2
Youth unemployment rate (%)	59.9	62.6	59.8	57.7	56.4	55.1

	% of GDP
Exports of goods and services, 2009	39.2
Imports of goods and services, 2009	60.8
External trade balance, 2009	-21.6
Gross External Debt, 2009	59.3

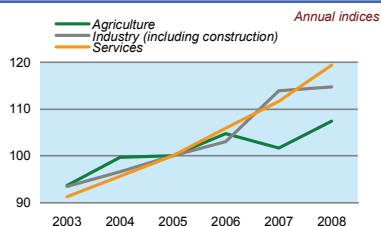
Real GDP growth rate



Economic activity rate, 2009



GDP in agriculture, industry, services (2005=100)



Forest resources

Area of Forest percentage of land area	35.6
---	------

Road accidents

Persons injured in road accidents, 2009	6 891
Persons killed in road accidents, 2009	160

GDP at current prices

millions of US Dollars, PPP, 2009	22 928
millions of MKD, 2009	409 100

GDP at current prices, per capita

US Dollars, PPP, 2009	11 170
MKD, 2009	199 308

Final consumption expenditure at current prices, per capita

US Dollars, PPP, 2009	10 664
-----------------------	--------

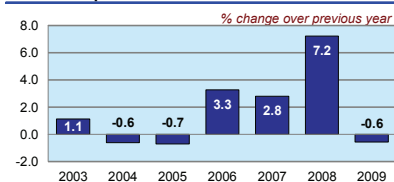
Purchasing Power Parity (PPP)

MKD per USD, US=1, 2009	17.843
-------------------------	--------

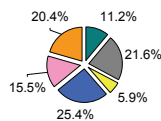
Exchange rate

Annual average, MKD per USD, 2009	44.087
-----------------------------------	--------

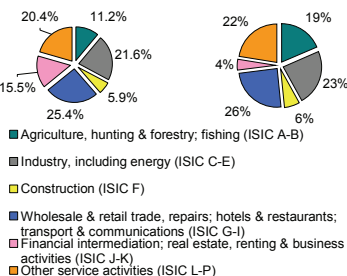
Consumer price index



GDP by major sectors, 2009



Employment in major sectors, 2009



Transport infrastructure

Railways total length in kilometres, 2007	699
Motorways total length in kilometres, 2007	221