



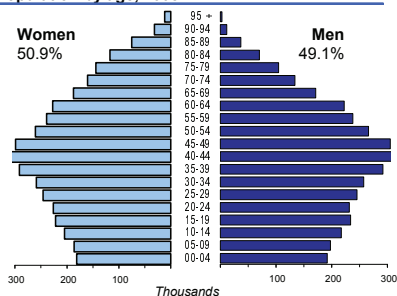
SWITZERLAND

Time: UTC + 1h

Capital (population, 2008)	Berne (345 405)
Two largest cities	Zurich (1 121 711) Geneva (500 354)
Area (km ²)	41 285
Total population, 2008	7 647 675
Population density (per km ²), 2008	185
Official languages	German, French, Italian, Romansch
Date joined UN	10 September 2002
National currency	Swiss franc (CHF)
National statistical office	Swiss Federal Statistical Office http://www.bfs.admin.ch/



Population by age, 2008



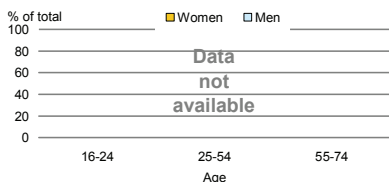
Life expectancy (in years), 2008	at birth	at 65	
	Women	85	22
	Men	80	19

Total fertility rate, 2008	1.5
average number of children per woman	

Adolescent fertility rate, 2008	4
number of live births per 1000 women aged 15-19	

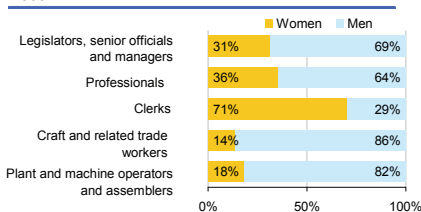
Mean age of women at birth of first child, 2005	29.5
age in years	

Computer use by age and sex

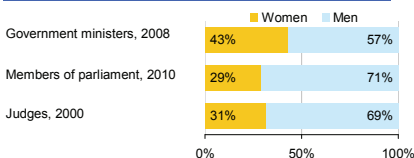


Women in the labour force, 2009	46%
percentage of total for both sexes	
Gender pay gap	..
monthly earnings	
hourly wage, 2008	18%
Women in part-time employment, 2009	59%
percentage of total of women employed	
Female tertiary students, 2007	49%
percentage of total for both sexes	
Women victims of homicide, 2008	39%
percentage of total for both sexes	
Women researchers, 2004	27%
percentage of total for both sexes	

Women and men in selected occupation groups, 2009



Women and men in public life

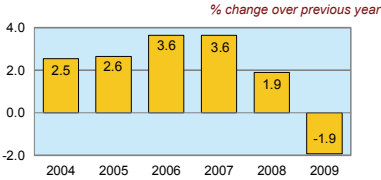


SWITZERLAND

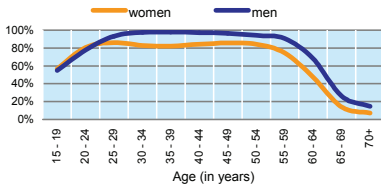
	2000	2005	2006	2007	2008	2009
Employment (% change over previous year)	1.0	0.4	2.3	2.8	1.9	0.9
Unemployment rate (%)	2.6	4.4	4.0	3.6	3.5	4.4
Youth unemployment rate (%)	5.0	8.8	7.7	7.1	7.0	8.2

	% of GDP
Exports of goods and services, 2009	51.7
Imports of goods and services, 2009	40.7
External trade balance, 2009	10.9
Gross External Debt, 2009	245.9

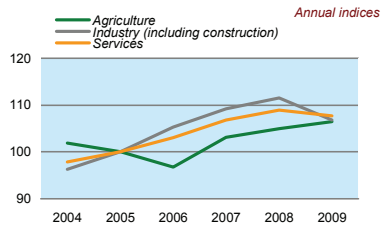
Real GDP growth rate



Economic activity rate, 2009



GDP in agriculture, industry, services (2005=100)



Forest resources

Area of Forest percentage of land area	30.5
---	------

Road accidents

Persons injured in road accidents, 2009	25 479
Persons killed in road accidents, 2009	349

GDP at current prices

millions of US Dollars, PPP, 2009	351 120
millions of CHF, 2009	535 282

GDP at current prices, per capita

US Dollars, PPP, 2009	45 353
CHF, 2009	69 140

Final consumption expenditure at current prices, per capita

US Dollars, PPP, 2009	31 443
-----------------------	--------

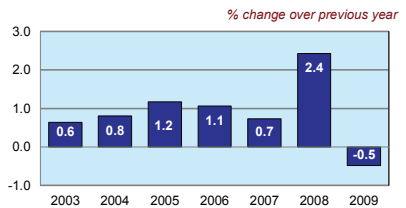
Purchasing Power Parity (PPP)

CHF per USD, US=1, 2009	1.525
-------------------------	-------

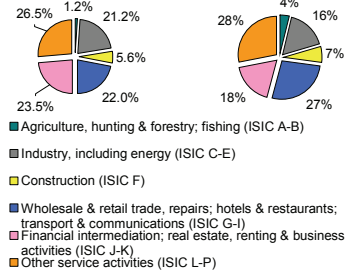
Exchange rate

Annual average, CHF per USD, 2009	1.086
-----------------------------------	-------

Consumer price index



GDP by major sectors, 2009



Employment in major sectors, 2008

Transport infrastructure

Railways	
total length in kilometres, 2002	5 159
Motorways	
total length in kilometres, 2002	1 341