



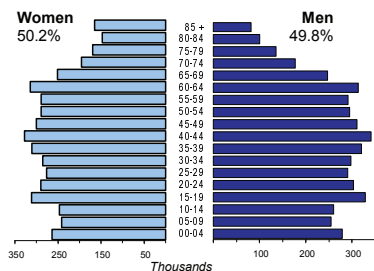
# SWEDEN

Capital (population, 2007)	Stockholm (789 024)
Two largest cities	Gothenburg (491 630)
	Malmö (278 523)
Area (km <sup>2</sup> )	449 964
Total population, 2009	9 298 515
Population density (per km <sup>2</sup> ), 2009	21
Official languages	Swedish
Date joined UN	19 November 1946
National currency	Swedish krona (SEK)
National statistical office	Statistics Sweden <a href="http://www.scb.se/">http://www.scb.se/</a>

Time: UTC + 1h



## Population by age, 2009



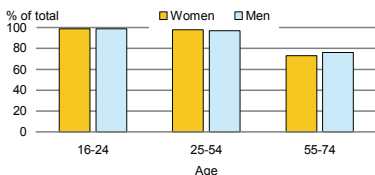
Life expectancy (in years), 2008	at birth	at 65	
	Women	83	21
	Men	79	18

Total fertility rate, 2008	1.9
average number of children per woman	

Adolescent fertility rate, 2007	6
number of live births per 1000 women aged 15-19	

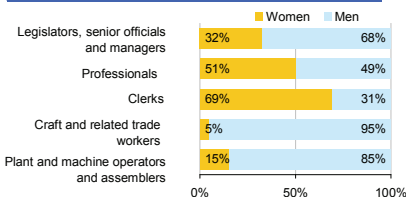
Mean age of women at birth of first child, 2005	28.7
age in years	

## Computer use by age and sex, 2009

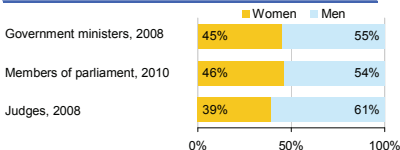


Women in the labour force, 2009	47%
percentage of total for both sexes	
Gender pay gap	..
monthly earnings	
hourly wage, 2008	17%
Women in part-time employment, 2009	41%
percentage of total of women employed	
Female tertiary students, 2007	60%
percentage of total for both sexes	
Women victims of homicide	..
percentage of total for both sexes	
Women researchers, 2007	34%
percentage of total for both sexes	

## Women and men in selected occupation groups, 2009



## Women and men in public life

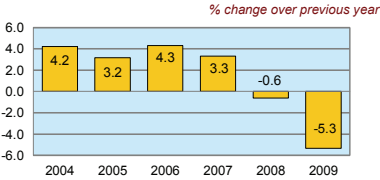


# SWEDEN

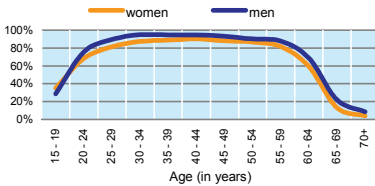
	2000	2005	2006	2007	2008	2009
Employment (% change over previous year)	2.5	0.3	1.7	2.5	0.9	-2.0
Unemployment rate (%)	5.6	7.6	7.0	6.1	6.2	8.3
Youth unemployment rate (%)	10.5	22.5	21.5	19.1	20.0	25.0

	% of GDP
Exports of goods and services, 2009	48.4
Imports of goods and services, 2009	41.9
External trade balance, 2009	6.5
Gross External Debt, 2009	220.1

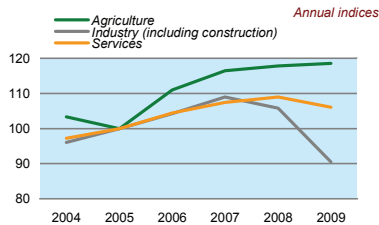
## Real GDP growth rate



## Economic activity rate, 2009



## GDP in agriculture, industry, services (2005=100)



## Forest resources

Area of Forest percentage of land area	67.9
---	------

## Road accidents

Persons injured in road accidents, 2009	25 639
Persons killed in road accidents, 2009	358

## GDP at current prices

millions of US Dollars, PPP, 2009	347 052
millions of SEK, 2009	3 089 180

## GDP at current prices, per capita

US Dollars, PPP, 2009	37 154
SEK, 2009	330 712

## Final consumption expenditure at current prices, per capita

US Dollars, PPP, 2009	28 680
-----------------------	--------

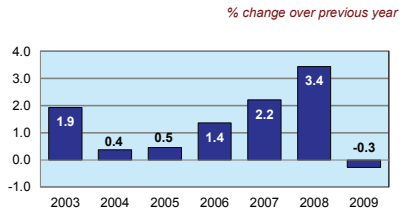
## Purchasing Power Parity (PPP)

SEK per USD, US=1, 2009	8.901
-------------------------	-------

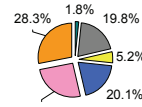
## Exchange rate

Annual average, SEK per USD, 2009	7.640
-----------------------------------	-------

## Consumer price index

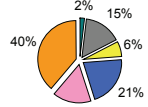


## GDP by major sectors, 2009



- Agriculture, hunting & forestry; fishing (ISIC A-B)
- Industry, including energy (ISIC C-E)
- Construction (ISIC F)
- Wholesale & retail trade, repairs; hotels & restaurants; transport & communications (ISIC G-I)
- Financial intermediation; real estate, renting & business activities (ISIC J-K)
- Other service activities (ISIC L-P)

## Employment in major sectors, 2009



## Transport infrastructure

Railways total length in kilometres, 2008	11 022
Motorways total length in kilometres, 2008	1 806