



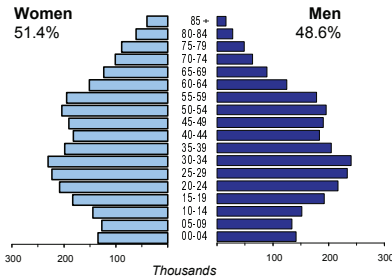
# SLOVAKIA

<b>Capital (population, 2008)</b>	Bratislava (428 791)
<b>Two largest cities</b>	Kosice (233 659) Presov (91 273)
<b>Area (km<sup>2</sup>)</b>	49 012
<b>Total population, 2009</b>	5 418 590
<b>Population density (per km<sup>2</sup>), 2009</b>	111
<b>Official languages</b>	Slovak
<b>Date joined UN</b>	19 January 1993
<b>National currency</b>	Euro (EUR)
<b>National statistical office</b>	Statistical Office of the Slovak Republic <a href="http://www.statistics.sk/">http://www.statistics.sk/</a>

Time: UTC + 1h

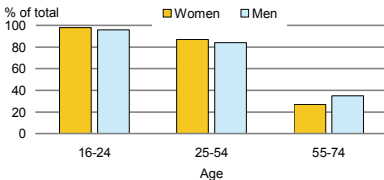


## Population by age, 2009



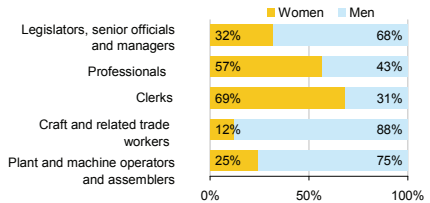
<b>Life expectancy (in years), 2008</b>	at birth	at 65
Women	79	18
Men	71	14
<b>Total fertility rate, 2008</b>	1.3	
average number of children per woman		
<b>Adolescent fertility rate, 2008</b>	21	
number of live births per 1000 women aged 15-19		
<b>Mean age of women at birth of first child, 2008</b>	26.6	
age in years		

## Computer use by age and sex, 2009

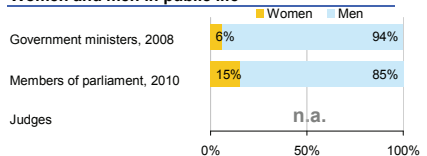


<b>Women in the labour force, 2009</b>	44%
percentage of total for both sexes	
<b>Gender pay gap</b>	..
monthly earnings	
hourly wage, 2008	21%
<b>Women in part-time employment, 2009</b>	5%
percentage of total of women employed	
<b>Female tertiary students, 2007</b>	60%
percentage of total for both sexes	
<b>Women victims of homicide, 2008</b>	26%
percentage of total for both sexes	
<b>Women researchers, 2008</b>	42%
percentage of total for both sexes	

## Women and men in selected occupation groups, 2009



## Women and men in public life

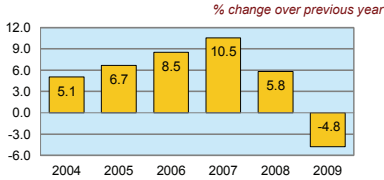


# SLOVAKIA

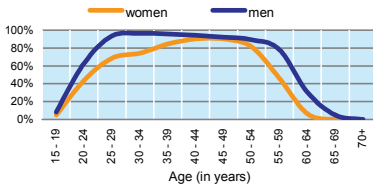
	2000	2005	2006	2007	2008	2009
Employment (% change over previous year)	-2.0	1.4	2.3	2.1	2.8	-2.4
Unemployment rate (%)	18.8	16.3	13.4	11.1	9.5	12.0
Youth unemployment rate (%)	36.9	30.1	26.6	20.3	19.0	27.3

	% of GDP
Exports of goods and services, 2009	70.6
Imports of goods and services, 2009	71.0
External trade balance, 2009	-0.4
Gross External Debt, 2009	75.1

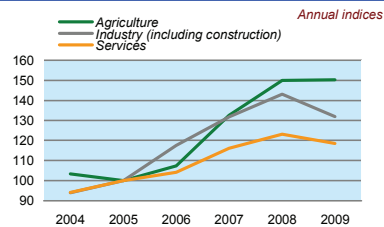
## Real GDP growth rate



## Economic activity rate, 2009



## GDP in agriculture, industry, services (2005=100)



## Forest resources

Area of Forest percentage of land area	40.2
---	------

## Road accidents

Persons injured in road accidents, 2009	8 881
Persons killed in road accidents, 2009	347

## GDP at current prices

millions of US Dollars, PPP, 2009	124 438
millions of EUR, 2009	63 051

## GDP at current prices, per capita

US Dollars, PPP, 2009	22 968
EUR, 2009	11 638

## Final consumption expenditure at current prices, per capita

US Dollars, PPP, 2009	18 582
-----------------------	--------

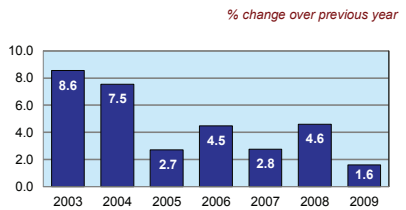
## Purchasing Power Parity (PPP)

EUR per USD, US=1, 2009	0.507
-------------------------	-------

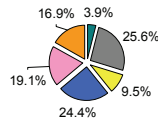
## Exchange rate

Annual average, EUR per USD, 2009	0.719
-----------------------------------	-------

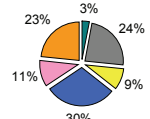
## Consumer price index



## GDP by major sectors, 2009



## Employment in major sectors, 2009



- Agriculture, hunting & forestry; fishing (ISIC A-B)
- Industry, including energy (ISIC C-E)
- Construction (ISIC F)
- Wholesale & retail trade, repairs; hotels & restaurants; transport & communications (ISIC G-I)
- Financial intermediation; real estate, renting & business activities (ISIC J-K)
- Other service activities (ISIC L-P)

## Transport infrastructure

Railways total length in kilometres, 2008	3 623
Motorways total length in kilometres, 2008	384