



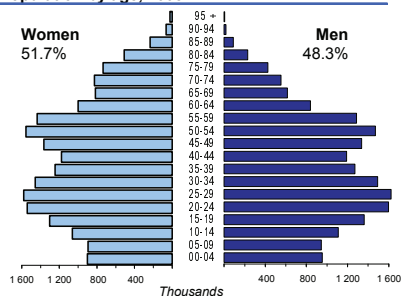
POLAND

Capital (population, 2007)	Warsaw (1 704 717)
Two largest cities	Lodz (756 666) Krakow (756 336)
Area (km²)	312 685
Total population, 2008	38 125 759
Population density (per km²), 2008	122
Official languages	Polish
Date joined UN	24 October 1945
National currency	Polish zloty (PLN)
National statistical office	Central Statistical Office of Poland http://www.stat.gov.pl/

Time: UTC + 1h



Population by age, 2008



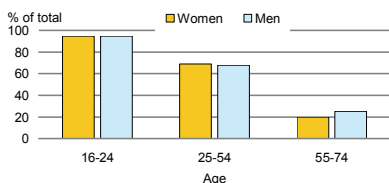
Life expectancy (in years), 2008	at birth	at 65	
	Women	80	19
	Men	71	15

Total fertility rate, 2008	1.4
average number of children per woman	

Adolescent fertility rate, 2008	16
number of live births per 1000 women aged 15-19	

Mean age of women at birth of first child, 2008	25.9
age in years	

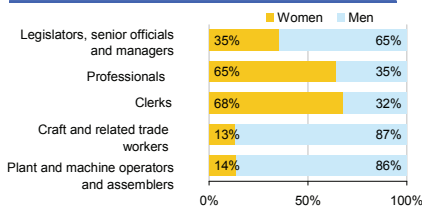
Computer use by age and sex, 2009



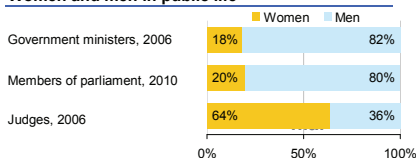
Women in the labour force, 2009	45%
percentage of total for both sexes	
Gender pay gap	
monthly earnings, 2006	18%
hourly wage, 2006	12%
Women in part-time employment, 2009	12%
percentage of total of women employed	
Female tertiary students, 2007	58%
percentage of total for both sexes	
Women victims of homicide	..
percentage of total for both sexes	

Women researchers, 2007	40%
percentage of total for both sexes	

Women and men in selected occupation groups, 2009



Women and men in public life

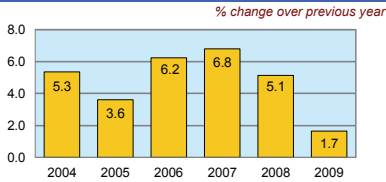


POLAND

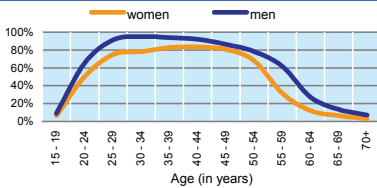
	2000	2005	2006	2007	2008	2009
Employment (% change over previous year)	-1.6	2.2	3.2	4.4	3.8	0.4
Unemployment rate (%)	16.1	17.8	13.9	9.6	7.1	8.2
Youth unemployment rate (%)	35.1	36.9	29.8	21.7	17.3	20.6

	% of GDP
Exports of goods and services, 2009	39.5
Imports of goods and services, 2009	39.4
External trade balance, 2009	0.1
Gross External Debt, 2009	65.2

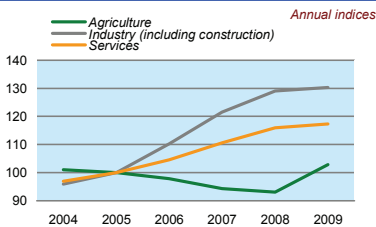
Real GDP growth rate



Economic activity rate, 2009



GDP in agriculture, industry, services (2005=100)



Forest resources

Area of Forest percentage of land area	30.0
---	------

Road accidents

Persons injured in road accidents, 2009	60 618
Persons killed in road accidents, 2009	4 572

GDP at current prices

millions of US Dollars, PPP, 2009	725 266
millions of PLN, 2009	1 343 660

GDP at current prices, per capita

US Dollars, PPP, 2009	19 009
PLN, 2009	35 218

Final consumption expenditure at current prices, per capita

US Dollars, PPP, 2009	15 117
-----------------------	--------

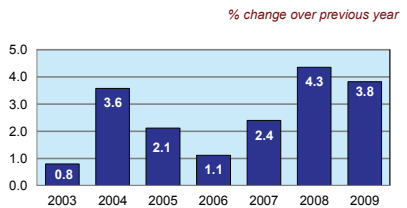
Purchasing Power Parity (PPP)

PLN per USD, US=1, 2009	1.853
-------------------------	-------

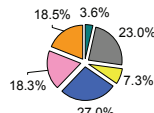
Exchange rate

Annual average, PLN per USD, 2009	3.115
-----------------------------------	-------

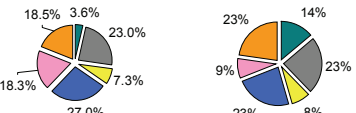
Consumer price index



GDP by major sectors, 2009



Employment in major sectors, 2008



- Agriculture, hunting & forestry; fishing (ISIC A-B)
- Industry, including energy (ISIC C-E)
- Construction (ISIC F)
- Wholesale & retail trade, repairs; hotels & restaurants; transport & communications (ISIC G-I)
- Financial intermediation; real estate, renting & business activities (ISIC J-K)
- Other service activities (ISIC L-P)

Transport infrastructure

Railways total length in kilometres, 2008	20 196
Motorways total length in kilometres, 2008	765