



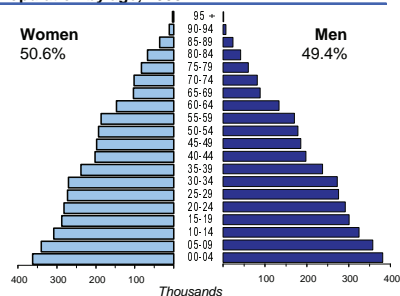
# ISRAEL

<b>Capital</b>	*
<b>Two largest cities</b>	Tel Aviv (387 234) Haifa (265 611)
<b>Area (km<sup>2</sup>)</b>	22 145
<b>Total population, 2008</b>	7 308 800
<b>Population density (per km2), 2008</b>	330
<b>Official languages</b>	Hebrew and Arabic
<b>Date joined UN</b>	11 May 1949
<b>National currency</b>	Israeli new shekel (ILS)
<b>National statistical office</b>	Central Bureau of Statistics Israel <a href="http://www.cbs.gov.il">http://www.cbs.gov.il</a>

Time: UTC + 2h

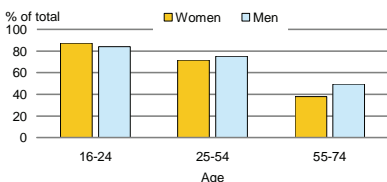


## Population by age, 2008



<b>Life expectancy (in years), 2007</b>	at birth	at 65
Women	83	20
Men	79	18
<b>Total fertility rate, 2008</b>	3.0	
average number of children per woman		
<b>Adolescent fertility rate, 2008</b>	14	
number of live births per 1000 women aged 15-19		
<b>Mean age of women at birth of first child, 2008</b>	27.0	
age in years		

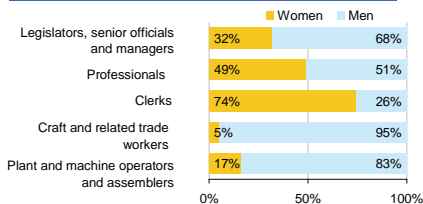
## Computer use by age and sex, 2008



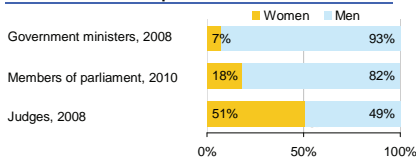
\* See the country specific notes on page viii.

<b>Women in the labour force, 2007</b>	47%
percentage of total for both sexes	
<b>Gender pay gap</b>	
monthly earnings, 2008	37%
hourly wage, 2008	17%
<b>Women in part-time employment, 2009</b>	40%
percentage of total of women employed	
<b>Female tertiary students, 2006</b>	56%
percentage of total for both sexes	
<b>Women victims of homicide, 2000</b>	20%
percentage of total for both sexes	
<b>Women researchers</b>	..
percentage of total for both sexes	

## Women and men in selected occupation groups, 2008



## Women and men in public life

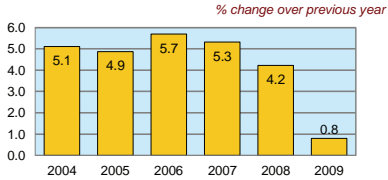


# ISRAEL

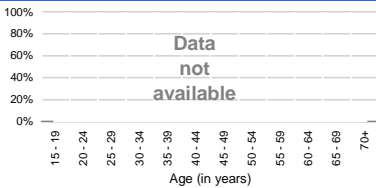
	2000	2005	2006	2007	2008	2009
Employment (% change over previous year)	4.0	3.9	3.2	4.2	3.5	0.3
Unemployment rate (%)	8.8	9.0	8.4	7.3	6.1	7.6
Youth unemployment rate (%)	16.9	17.8	18.2	16.1	12.6	..

	% of GDP
Exports of goods and services, 2009	34.7
Imports of goods and services, 2009	32.2
External trade balance, 2009	2.4
Gross External Debt, 2009	47.1

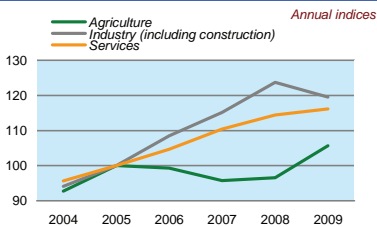
## Real GDP growth rate



## Economic activity rate



## GDP in agriculture, industry, services (2005=100)



## Forest resources

Area of Forest  
percentage of land area ..

## Road accidents

Persons injured	
in road accidents, 2008	31 399
Persons killed	
in road accidents, 2008	412

## GDP at current prices

millions of US Dollars, PPP, 2009	206 575
millions of ILS, 2009	768 339

## GDP at current prices, per capita

US Dollars, PPP, 2009	28 267
ILS, 2009	105 137

## Final consumption expenditure at current prices, per capita

US Dollars, PPP, 2009	22 946
-----------------------	--------

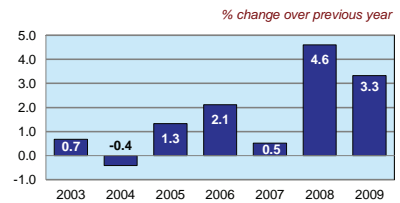
## Purchasing Power Parity (PPP)

ILS per USD, US=1, 2009	3.719
-------------------------	-------

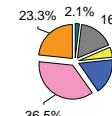
## Exchange rate

Annual average, ILS per USD, 2009	3.932
-----------------------------------	-------

## Consumer price index

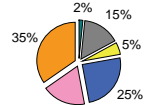


## GDP by major sectors, 2009



- Agriculture, hunting & forestry; fishing (ISIC A-B)
- Industry, including energy (ISIC C-E)
- Construction (ISIC F)
- Wholesale & retail trade, repairs; hotels & restaurants; transport & communications (ISIC G-I)
- Financial intermediation; real estate, renting & business activities (ISIC J-K)
- Other service activities (ISIC L-P)

## Employment in major sectors, 2009



## Transport infrastructure

Railways	
total length in kilometres, 2004	625
Motorways	
total length in kilometres, 2004	379